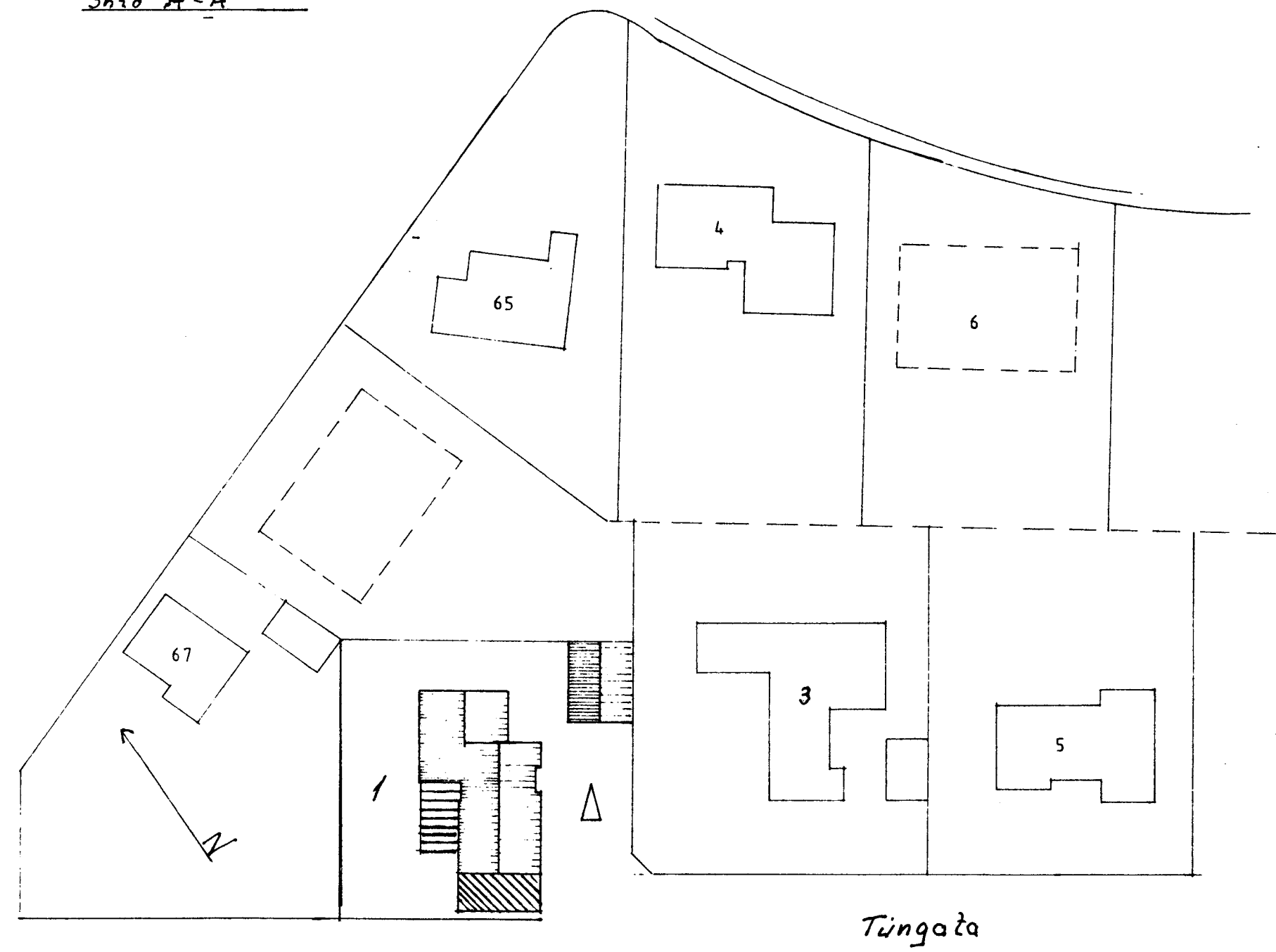
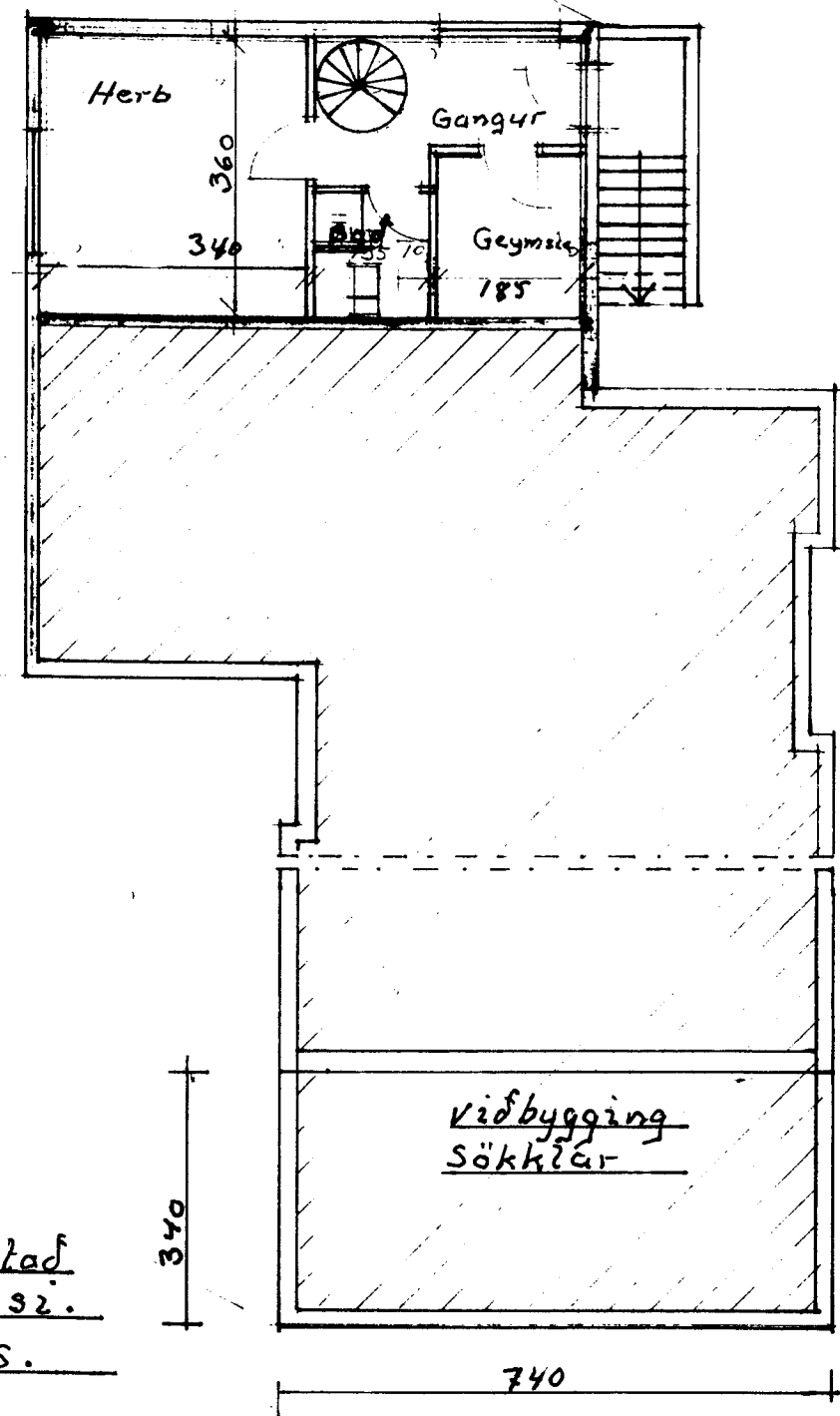
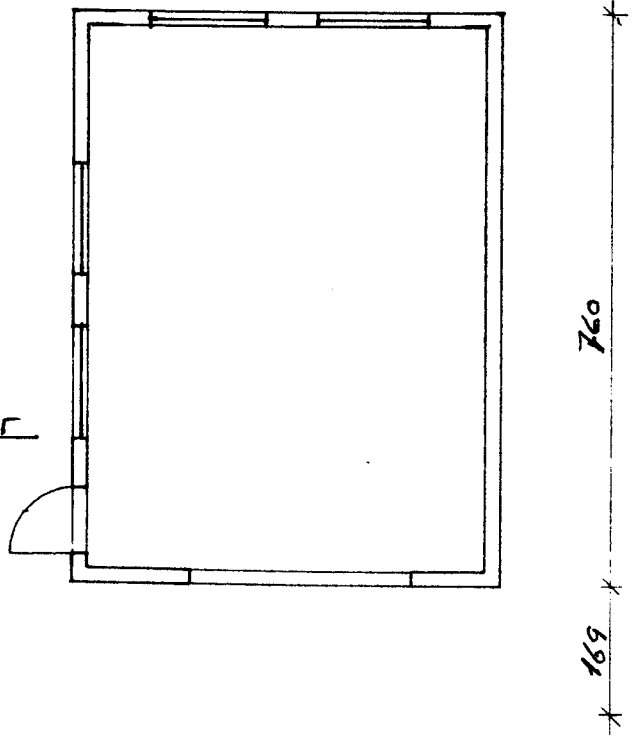
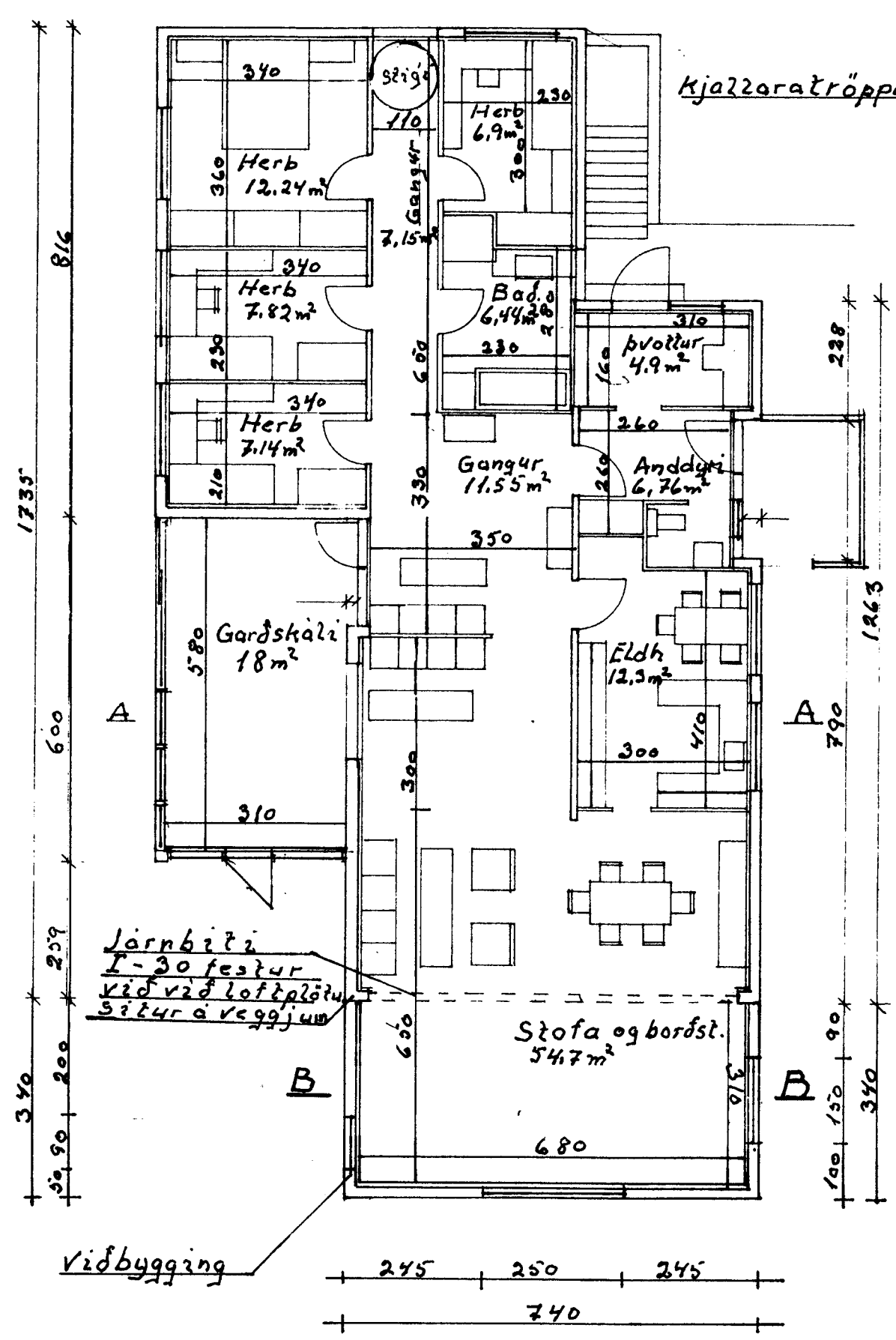
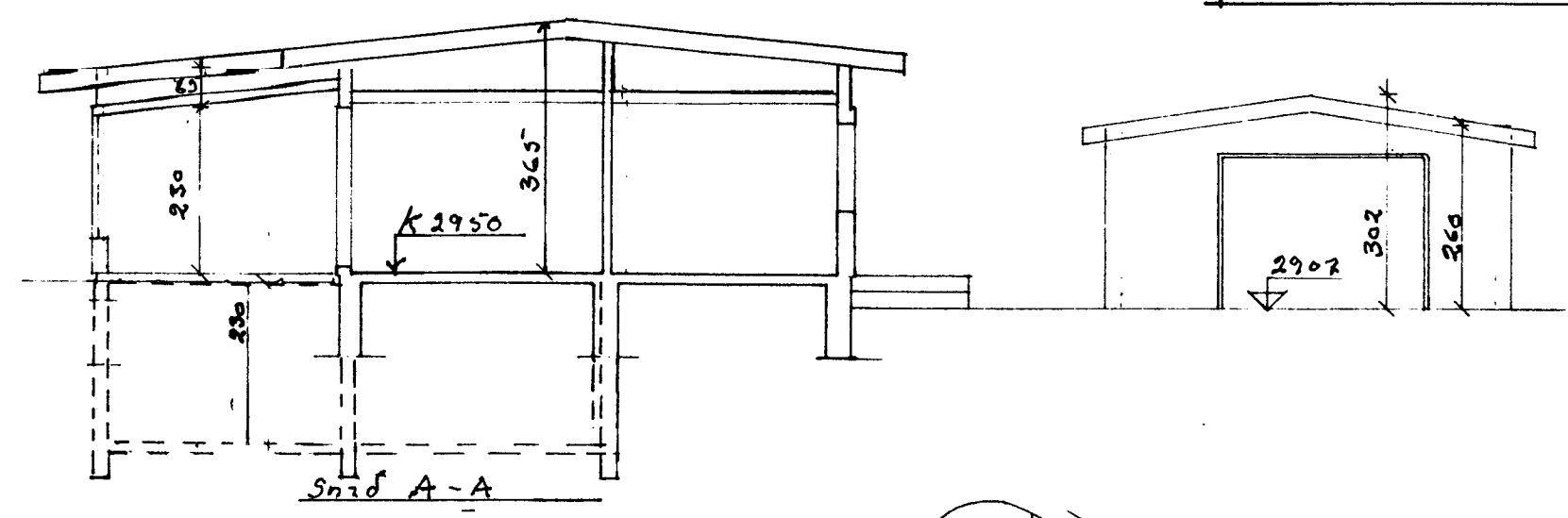
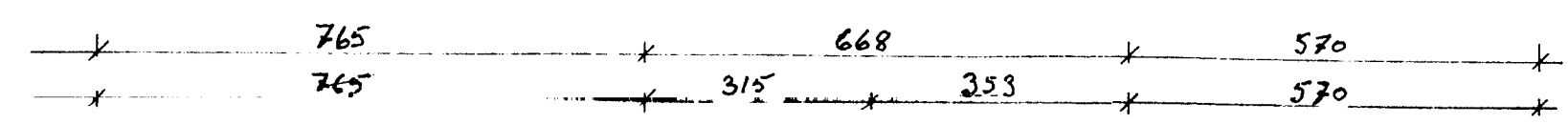


Sigurðir B.



Öll mál skulu endurskoda á byggingastad.
Gluggar seú í samræmi við glugga á hús.
Loff og gólf seú í samræmi við hús.

Málkvæði 1:100 1:500 Ónefnd mál 2 cm	Tingata 1 Viðbygging: Stakkun á stofu. Grunnmynd, þverskurður A-A. Afstöðumynd
Teiknad 2. júní 2014	Sigurðir Hreggviðsson