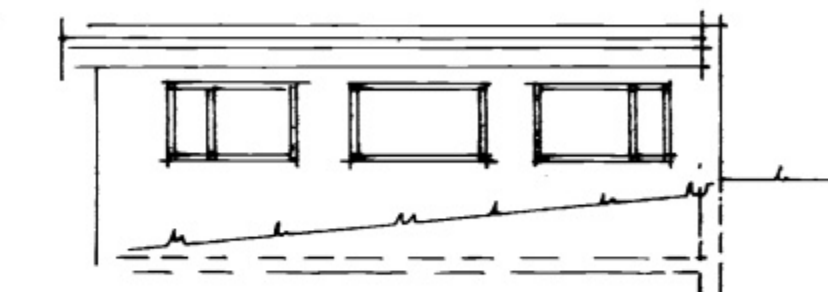
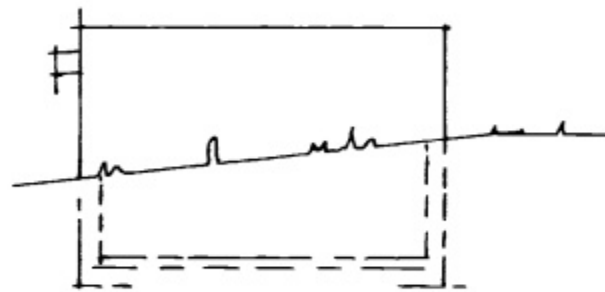


SUDURHLÍÐ

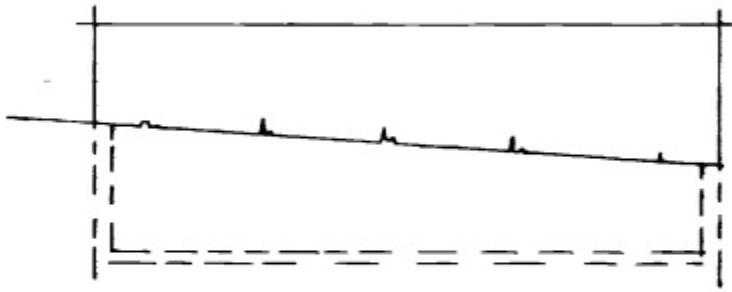
VESTURHLÍÐ



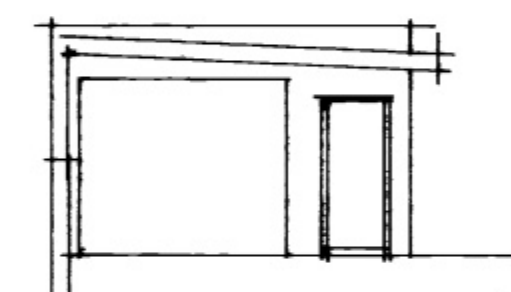
VESTURHLÍÐ ÞÍLSKUR



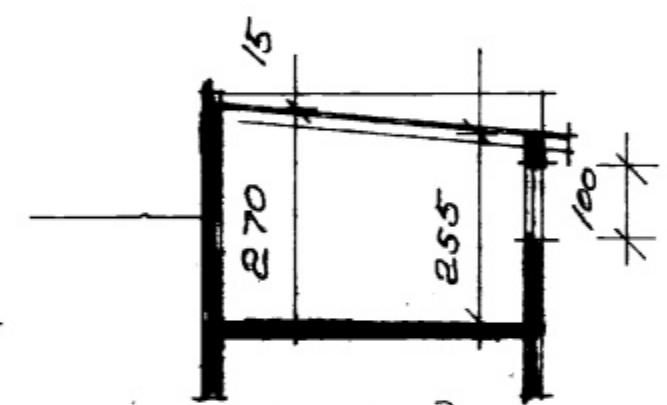
SUDURHLÍÐ ÞÍLSKUR



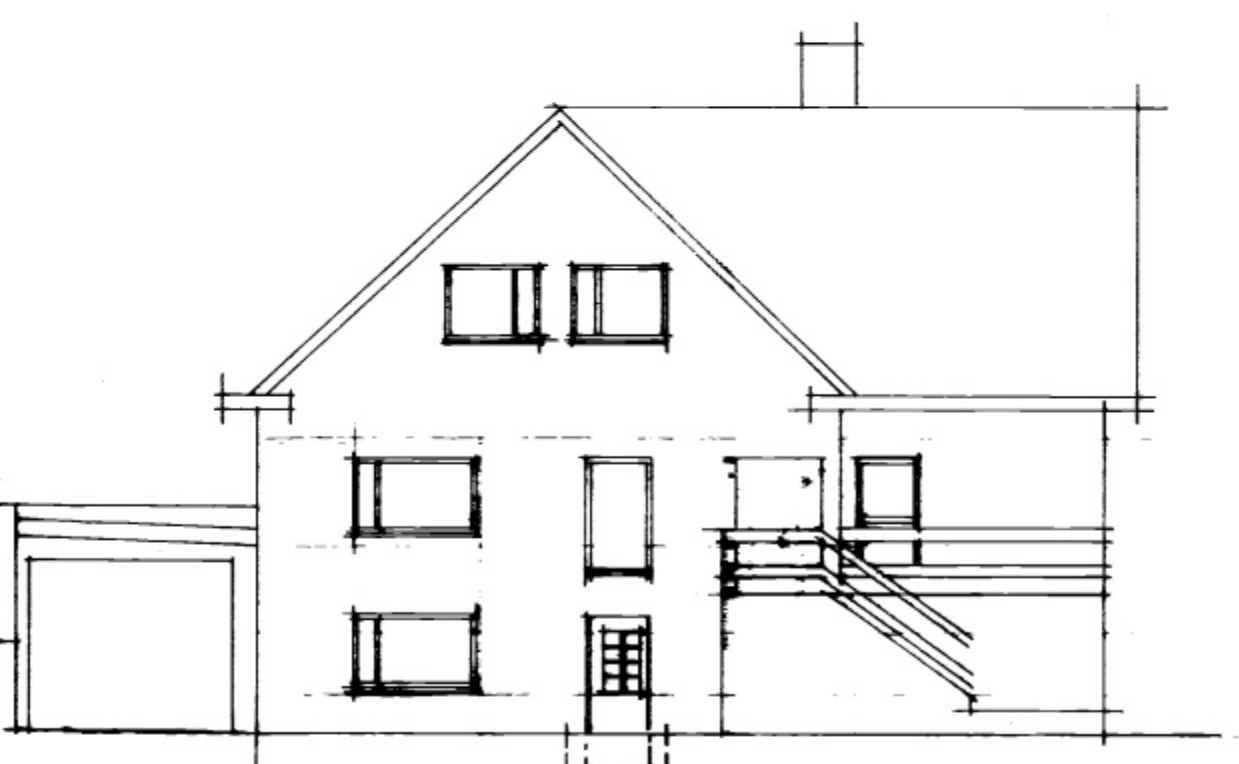
AUSTURHLÍÐ ÞÍLSKUR



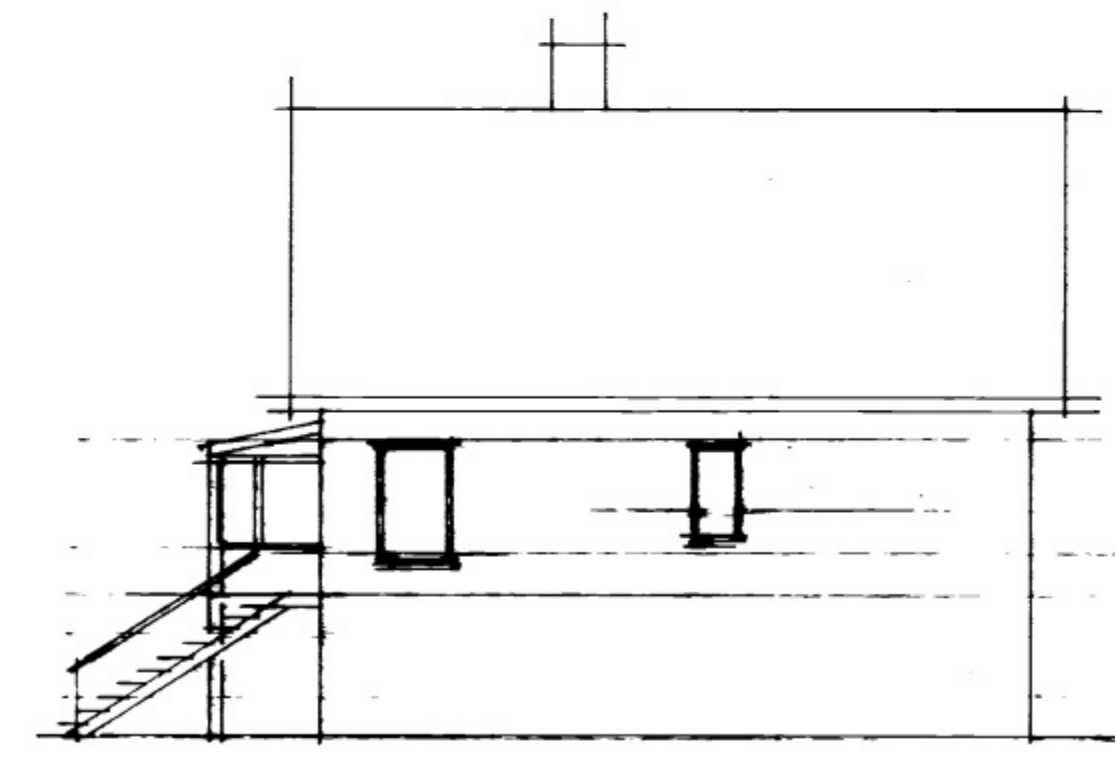
NORÐURHLÍÐ



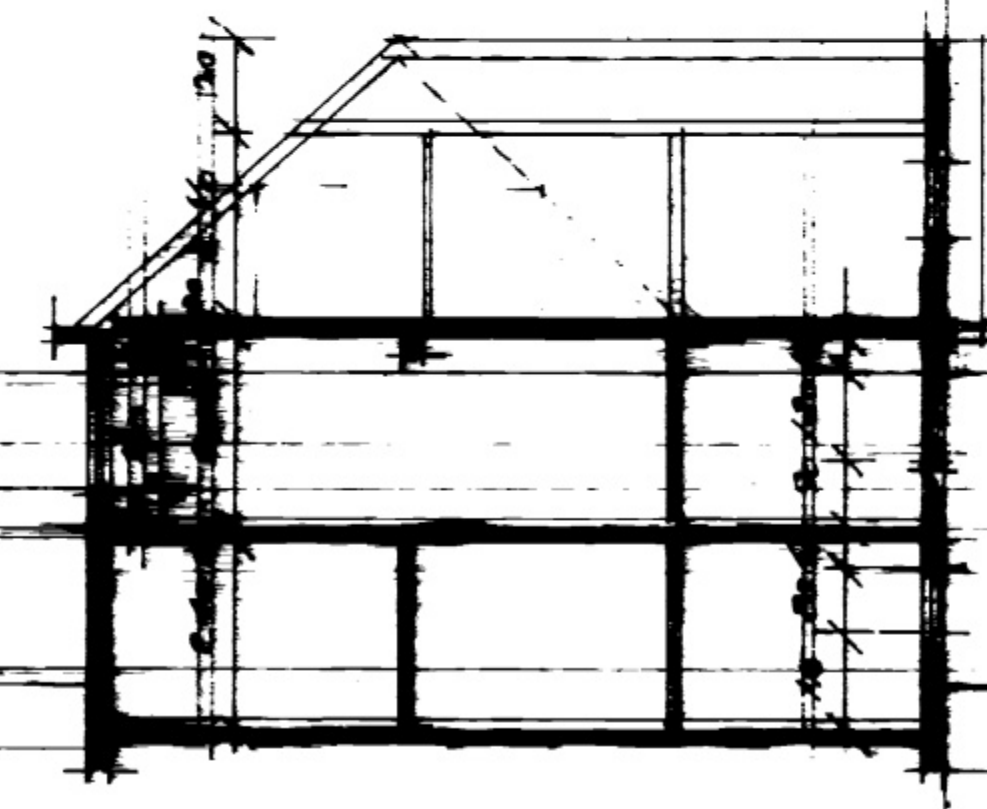
ÞÍLSKUR



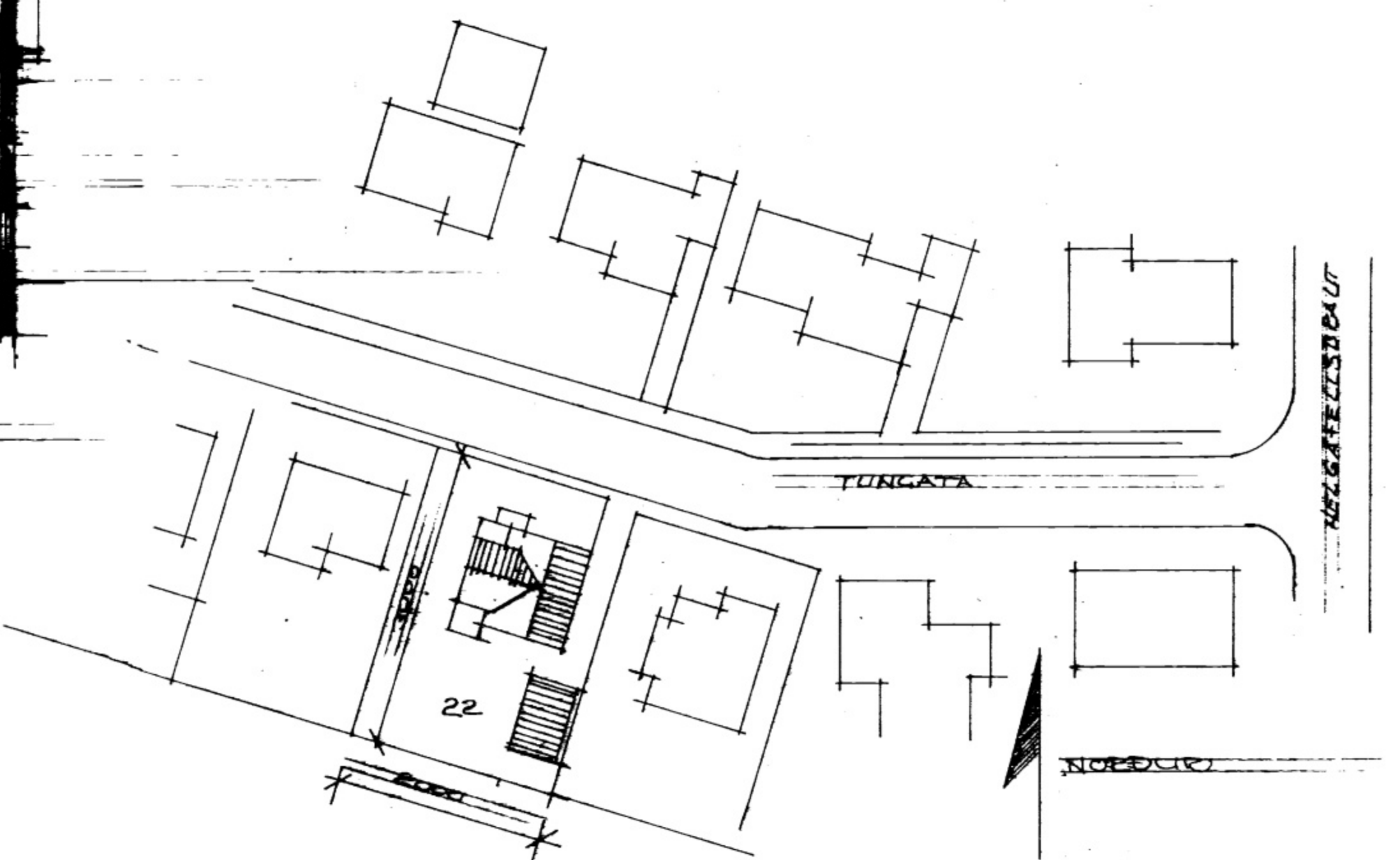
NORÐURHLÍÐ



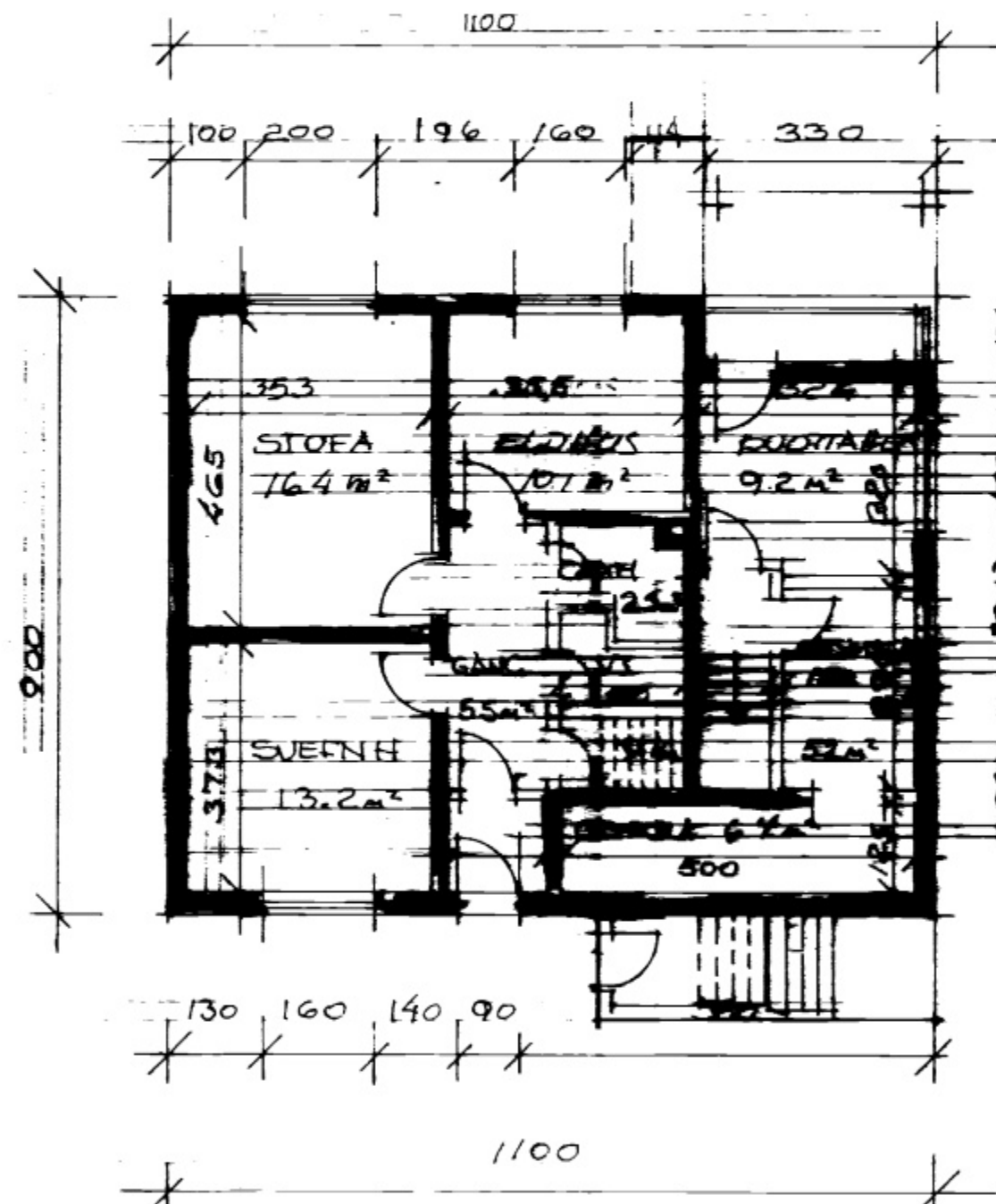
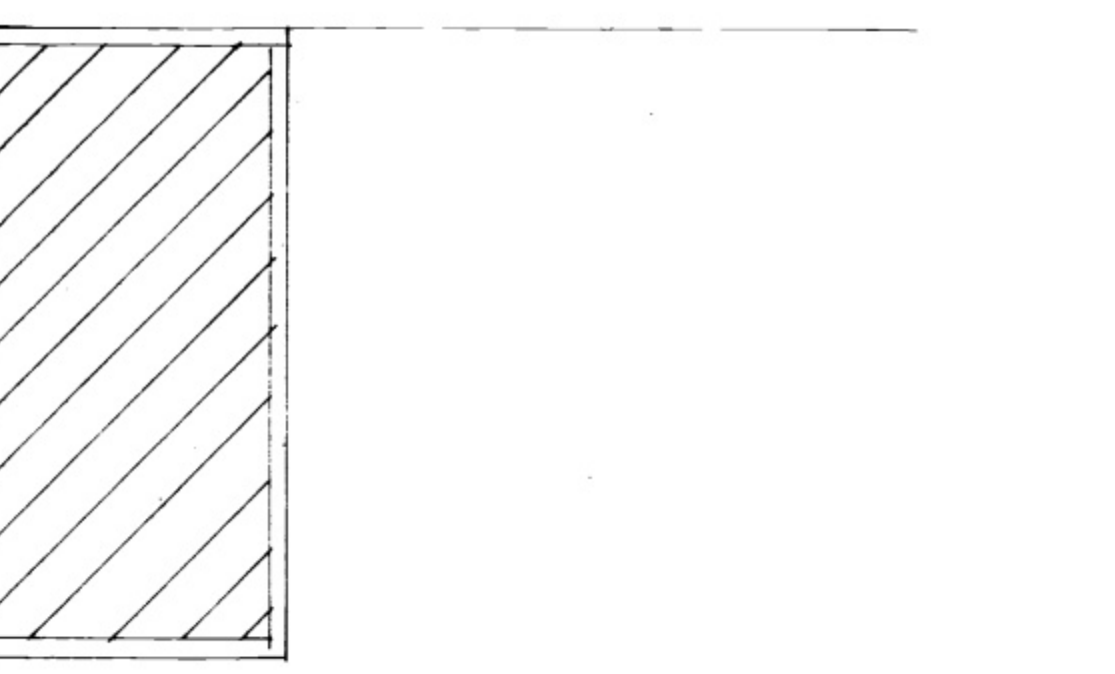
AUSTURHLÍÐ



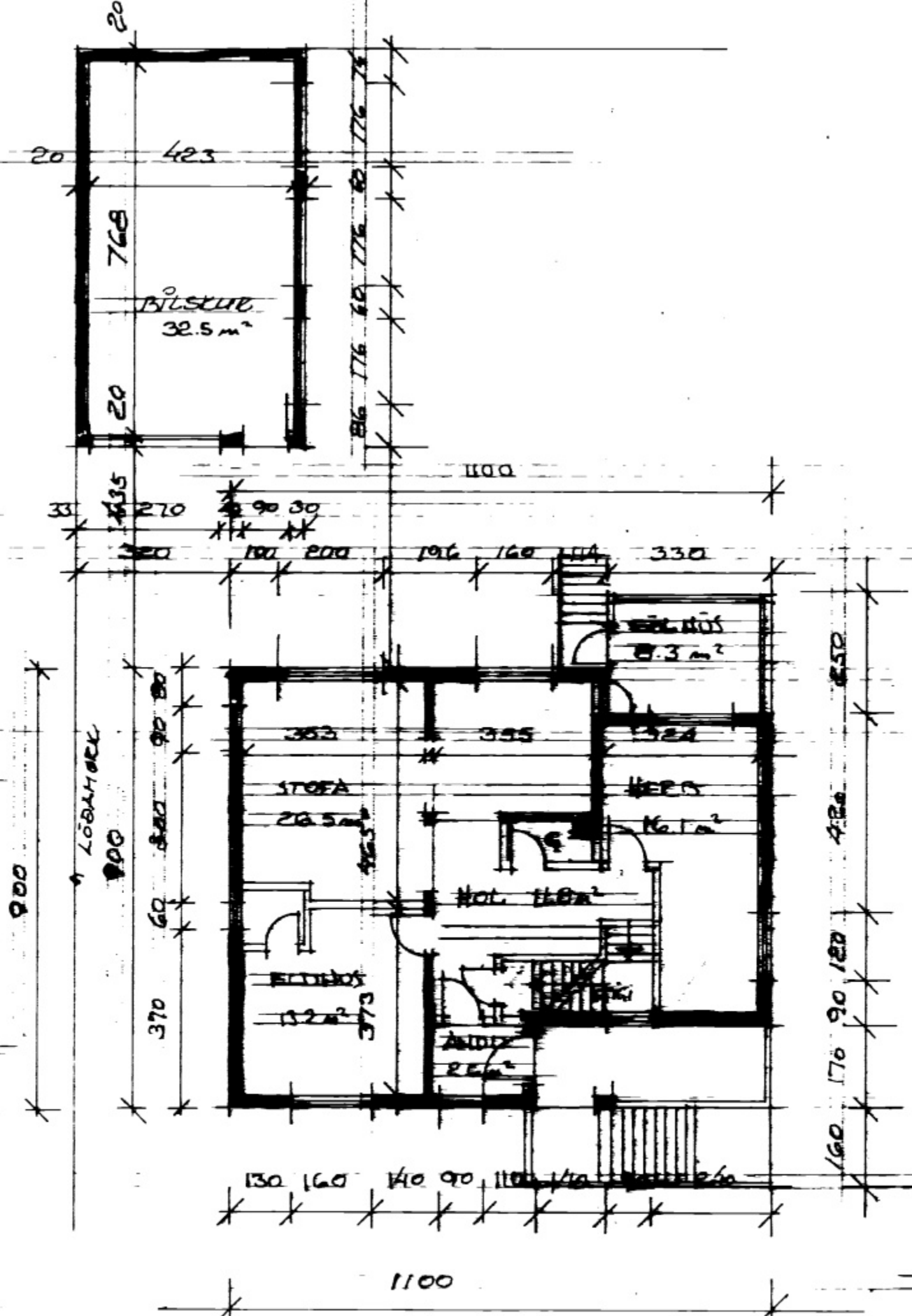
ÞÍLSKUR 1:100



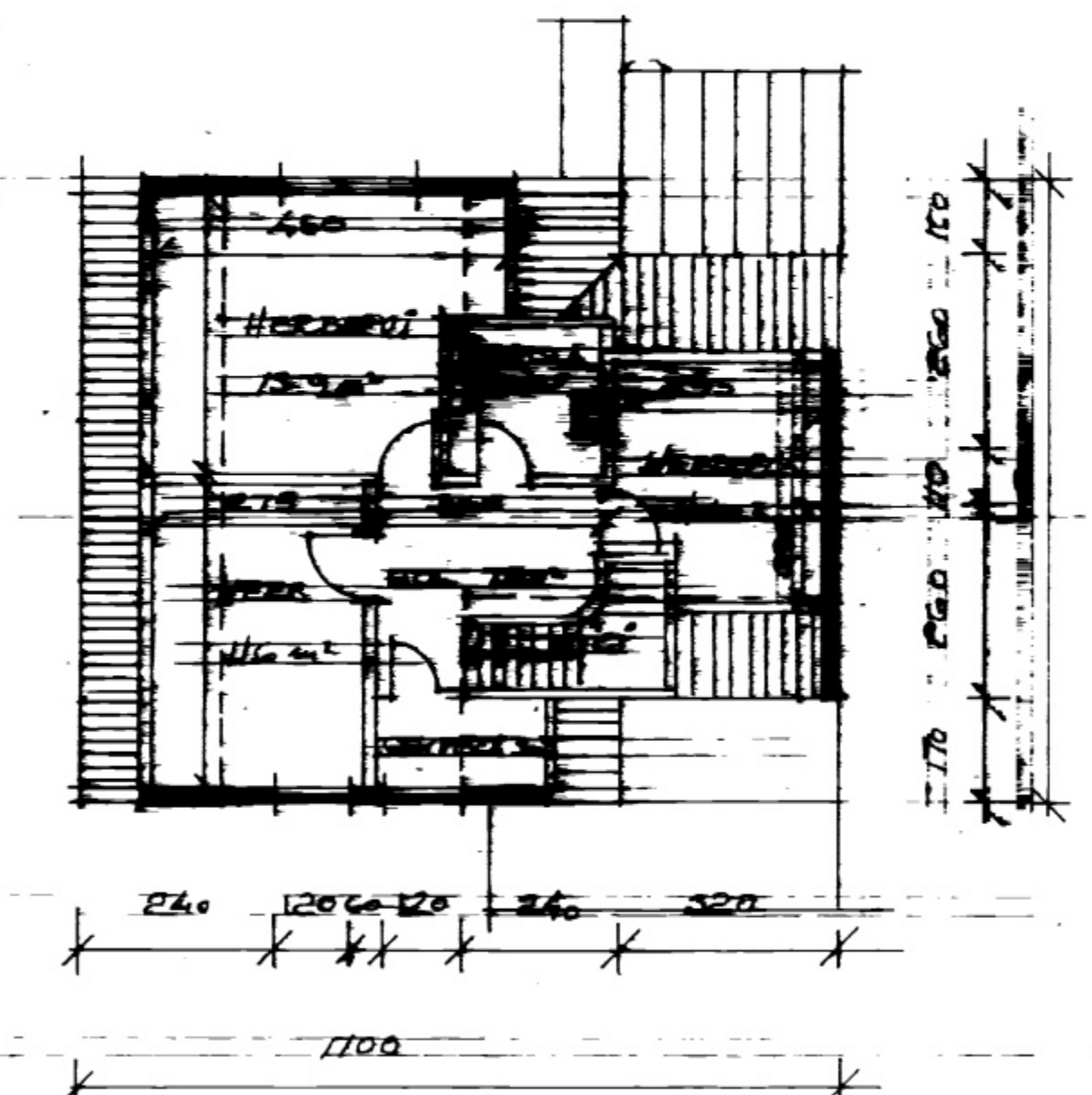
AFSTÖÐUMYND 1:500



KJALLARÍ 1:100



1. HAFI 1:100



2. HAFI 1:100

STÆRÐIR	DRÖTTO	DRÖTTO	DRÖTTO
KJALLARÍ	101.4 m ²	87.3 m ²	208.4 m ²
1. HAFI	96.5 m ²	79.9 m ²	206.0 m ²
2. HAFI	64.4 m ²	57.1 m ²	165.4 m ²
ÞÍLSKUR	40.7 m ²	32.5 m ²	106.8 m ²
SAMTALS	302.8 m ²	256.8 m ²	833.6 m ²

ÖLL MÁL Í CM. FLATARMÁL Í M²

LEIÐRETTI DES 1998
 TÚNGATA 22 VESTMANNABEYJUM
 GRUNNMYNDIR SUÐUR OG ÉTTLIT MÆLI MÆÐ 1:100 1:500
 TEIKNAD UPPIR EFTIR BYGGINGAÐFERÐARTEIKNINGUM
 GEBÐUM AF 4.H. 1953 OG SÍÐAR LEIÐRETTINGUM AF MÆRISVINDSSHVI
 FÖR 1997. HÖNDLINGS- OG BYGGINGAÐFERÐIR
 OG TEIKNINGARSTAFUR TUNGATA 22 1998
 ÞALL ZÖÐHÓLASSÓO TUNGATA 22 VESTMANNABEYJUM