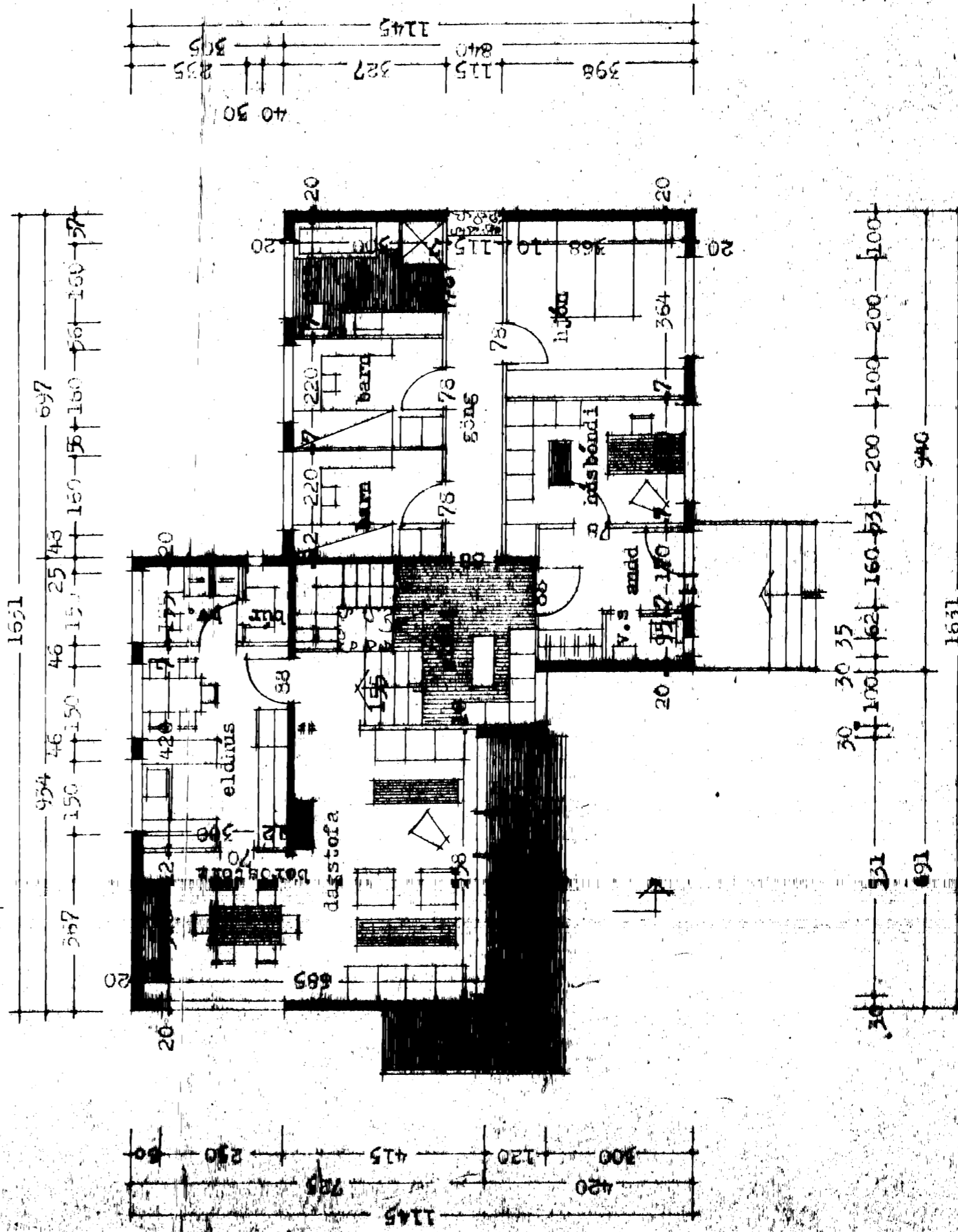


skurður 1.-s

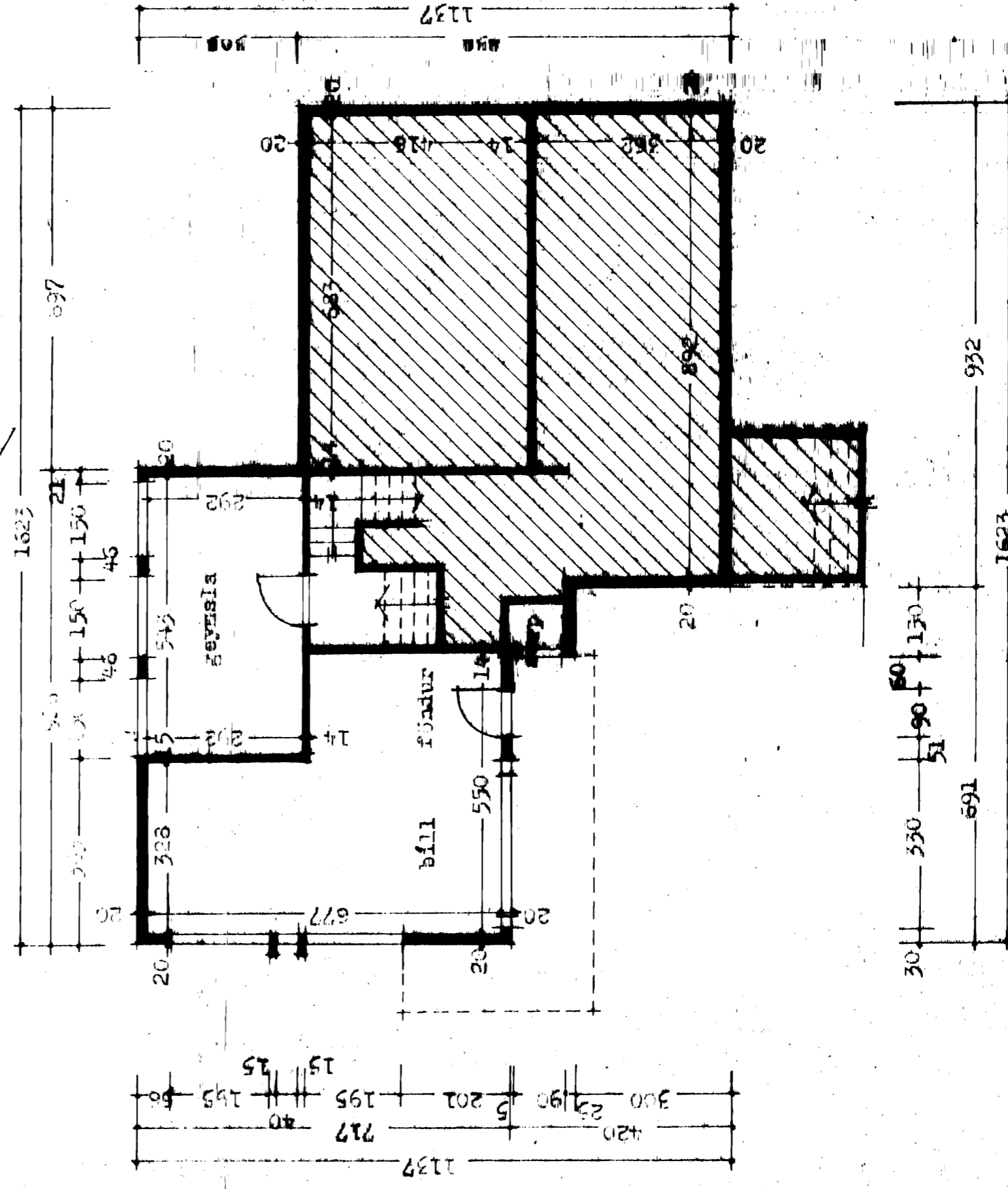
HÖFÐAVEGUR

G.68,50

Afstöðuvæðing 1:500
fláarmál mána 138,029 m²



Grunnmynd 1. hæðar



Grunnmynd 2. hæðar

Breytt 1. feb. 1976

Þjartan Þorvaldsson
Reykjavík í m. 1975

Þjartan Þorvaldsson