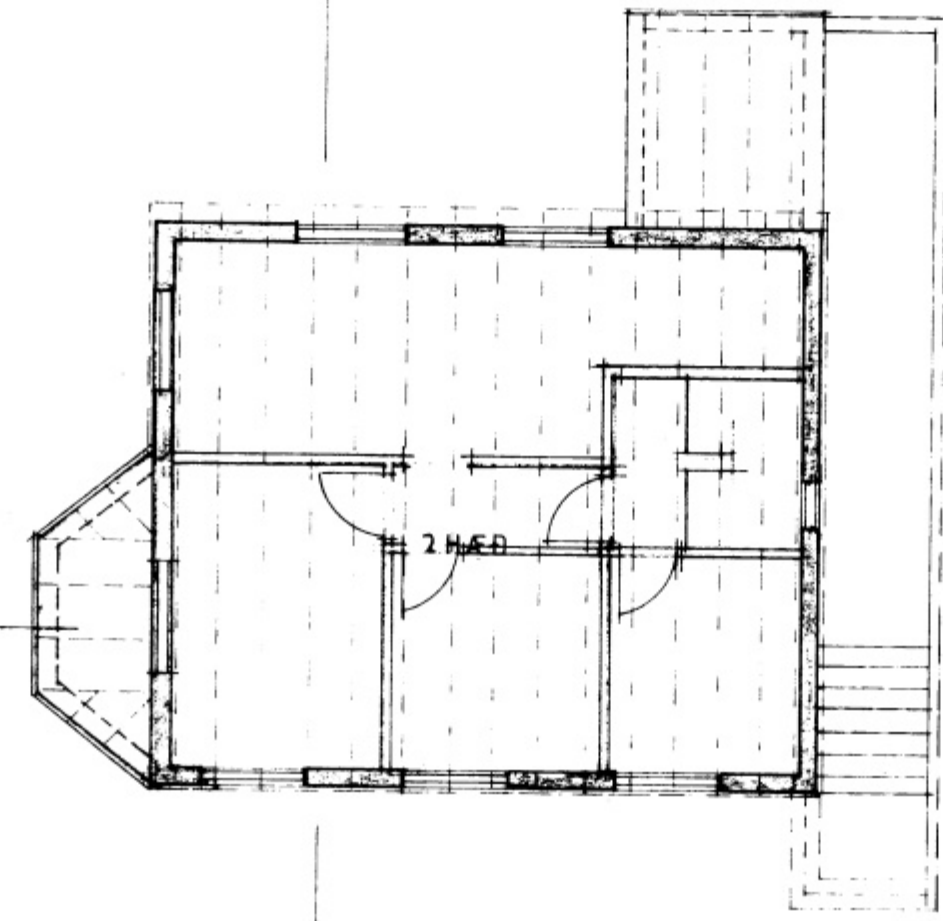


SNID B-B M=1:100

2x8" REIM FFST MED 1/2" MURBOLTUM L=160mm c/c 120cm

B ←

HLUTI 1



B ←

GRUNNMYND 2 HÆÐ M=1:100

1x6" PRYSTIFUAVARIN HEFLUD PAKKASSABORD

2x8" SPERRUR c/c 60cm

2x8" REIM FEST MED 90x90BMF VINKLUM 2x6 STK. 40/40 KAMBSAUM PR. SPERRU

UNIVERSAL BMF 2x4 STK. 40/40 KAMBSA

VINDPLATA 1" STEINULL 7" LETULL PLASTFOLI

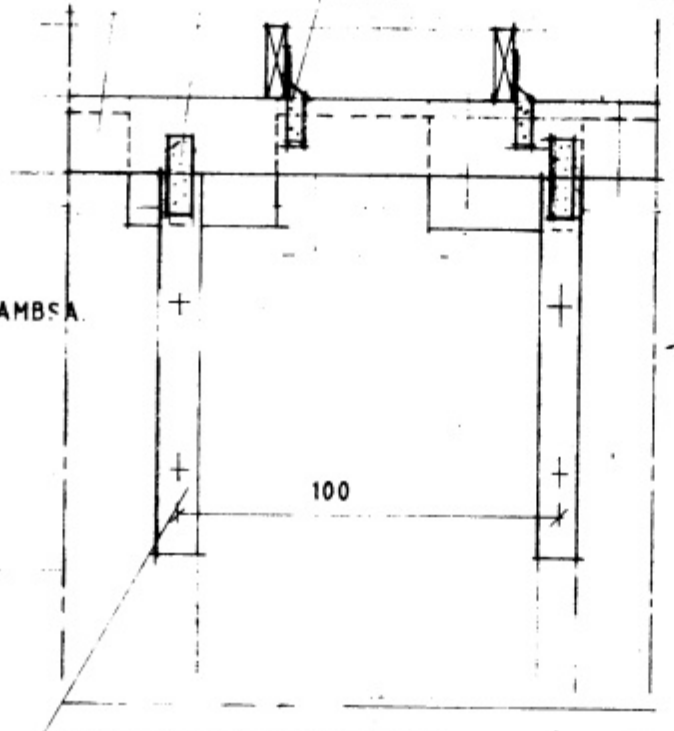
MILLIVECUR

HLUTI 2

7x8" REIM FEST MED 1/2" MURBOLTUM L=160mm c/c 120cm

70x140mm BMF NAGLAPLÖTUR 2x5 STK. 40/40 KAMBSAUMUR

BMF UNIVERSAL BESLAG 2x5 STK. 40/40 SAUMUR



2x4" FFSTINGAR FFSTAR MED 2 STK. 1/2" MURBOLTUM L=160mm

SNID A

300/250mm VINDSKEID

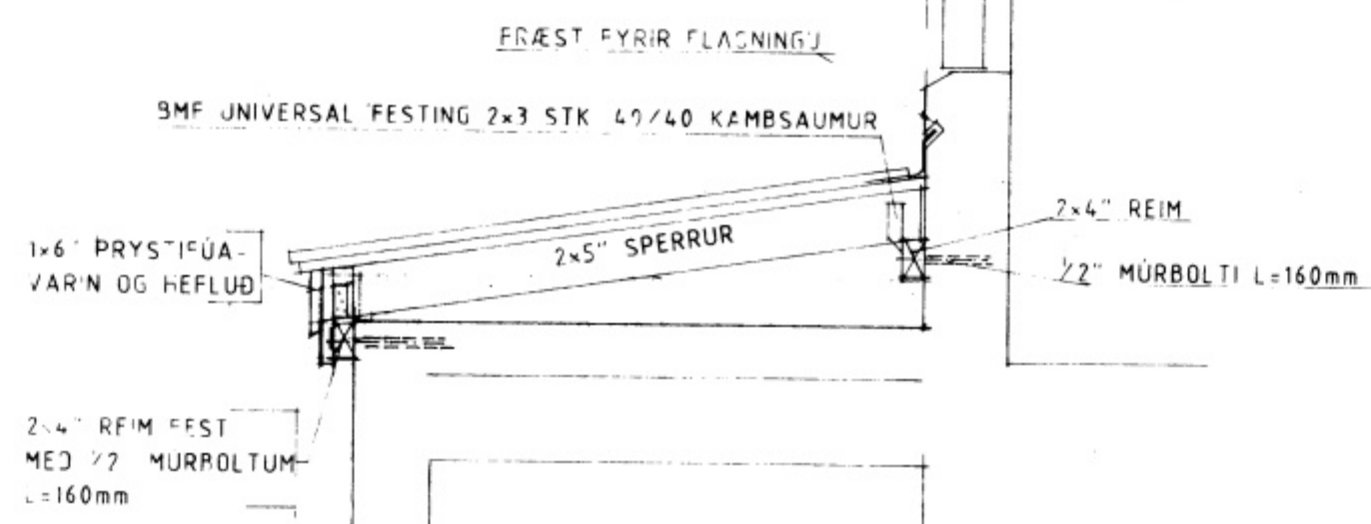
BMF UNIVERSAL 2x4 STK. 40/40 KAMBSAUMUR

2x8" REIM FFST MED 1/2" MURBOLTUM L=160mm c/c 150cm

2x8" SPERRA c/c 60

1x6" LEGTUR BÄRUSTAL

HLUTI 3



FRÆST FYRIR FLASNINGU

BMF UNIVERSAL FESTING 2x3 STK. 40/40 KAMBSAUMUR

1x6" PRYSTIFUAVARIN OG HEFLUD

2x5" SPERRUR

2x4" REIM

1/2" MURBOLTI L=160mm

2x4" REIM FEST MED 1/2" MURBOLTUM L=160mm

SNID C M=1:20

STÆRDIR

| | |
|----------|---------------------|
| KJALLARI | 91,9m ² |
| 1. HÆÐ | 77,5m ² |
| 2. HÆÐ | 65,8m ² |
| SAMTALS | 235,2m ² |

| | | | |
|-------------------------|--------|-----------------|------------------------------|
| F | | VERK | SKÓLAVEGUR 22 Vestmannaeyjum |
| E | | | BREYTING Á PAKI |
| D | | | PVERSNID GRUNNMYND 2. HÆÐ |
| C | | | |
| B | | | |
| A | JAN 91 | BREYTING Á PAKI | |
| BR. | DAGS. | BREYTING | TEIKN. NR. 2B AF 8415 |
| PÁLL ZÓPHONIÁSSON | | | MANNAD P Z TEIKNAD S S |
| BYGGINGATÆKNIFRÆÐINGUR | | | KVARDI 1:100 1:20 |
| KIRKJUVEGI 23 - 98-2711 | | | DAGS. APRÍL 1984 |
| 900 VESTMANNAEYJUM | | | |