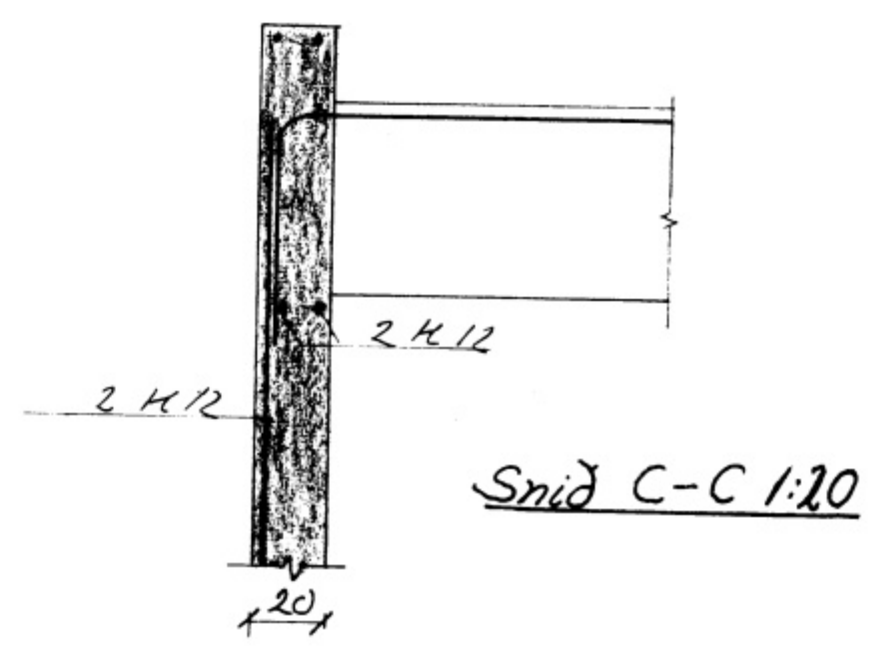
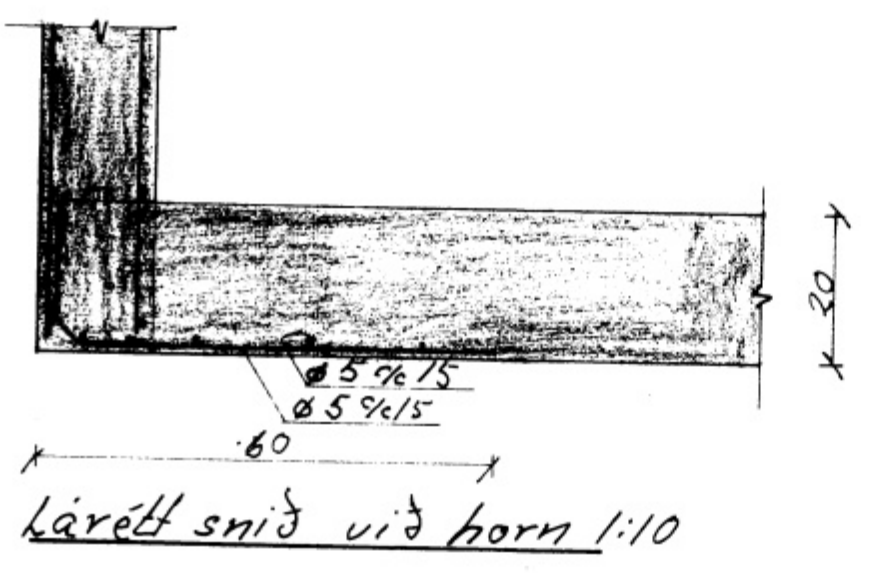


Skjringar:
 Önefnd mál eru sm.
 K merki kambastól Ks 40
 Ø merki söðin steypustyrktarnet
 Ns 50
 Steinategma sé S 200, með 4-5% loftog
 mesta Kornasæð sé 30-40 mm



TRÉSMÍÐJAN Vestmannaeyjum
 Knútur Aksefsson
 Tæknifræðingur
 Furulundur 5
 Garðabæ S.40536
 Veggir