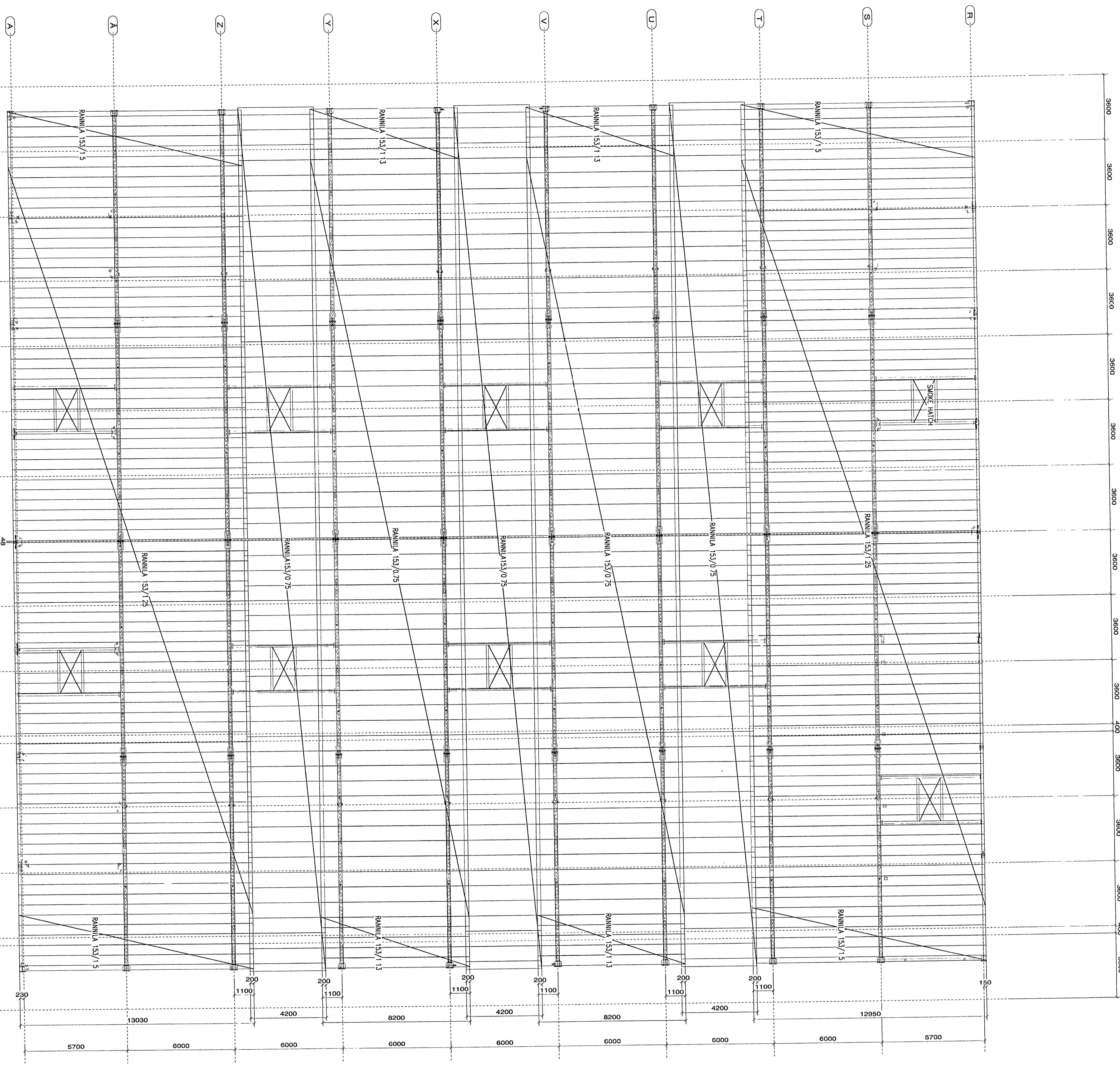


PROFIILI	LEIKKAUS	4	5	6	7	8	9	10	11	12	13	14	15	16	17	18	19	20
992001	R 153/75/5	50	100	150	200	250	300	350	400	450	500	550	600	650	700	750	800	850
992002	R 153/75/13	2	2	2	2	2	2	2	2	2	2	2	2	2	2	2	2	2
992003	R 153/75/25	2	2	2	2	2	2	2	2	2	2	2	2	2	2	2	2	2
992004	R 153/75/0/75	2	2	2	2	2	2	2	2	2	2	2	2	2	2	2	2	2
992005	R 153/75/13	2	2	2	2	2	2	2	2	2	2	2	2	2	2	2	2	2
992006	R 153/75/5	2	2	2	2	2	2	2	2	2	2	2	2	2	2	2	2	2
992007	R 153/75/0/75	2	2	2	2	2	2	2	2	2	2	2	2	2	2	2	2	2
992008	R 153/75/13	2	2	2	2	2	2	2	2	2	2	2	2	2	2	2	2	2
992009	R 153/75/5	2	2	2	2	2	2	2	2	2	2	2	2	2	2	2	2	2
992010	R 153/75/0/75	2	2	2	2	2	2	2	2	2	2	2	2	2	2	2	2	2
992011	R 153/75/13	2	2	2	2	2	2	2	2	2	2	2	2	2	2	2	2	2
992012	R 153/75/5	2	2	2	2	2	2	2	2	2	2	2	2	2	2	2	2	2
TOTAL WEIGHT (KG)		408	1080	1620	2160	2700	3240	3780	4320	4860	5400	5940	6480	7020	7560	8100	8640	9180

LEIKKAUS	4	5	6	7	8	9	10	11	12	13	14	15	16	17	18	19	20
992001	50	100	150	200	250	300	350	400	450	500	550	600	650	700	750	800	850

FASTENING TO THE SUPPORTS S0-2-115-5-5,3,5 2 PCS EACH VALLEY
 END OVERLAP S1-3-H15-6-3,3,2 EACH VALLEY
 SIDE OVERLAP S1-3-H15-6-3,3,2 (c. 500 mm MIN)
 HOLES FOR SMOKE MATCHES ETC WILL BE CUT AT SITE

PROFILLED STEEL SHEETS RANNUKA 153/0/75, 113, 125, 13, WIDE FLANGE UPWARDS



PROFIILI	LEIKKAUS	4	5	6	7	8	9	10	11	12	13	14	15	16	17	18	19	20
992001	R 153/75/5	50	100	150	200	250	300	350	400	450	500	550	600	650	700	750	800	850

RECEIVED 5.10.2000
 DATE: 10/10/00
 REVISION: 1
 REV BY: JARBND

K AARO KOHONEN OY
 consulting engineers

Special Steel Oy
 Steel structures
 Roof
 Schedules of profiled steel

36-0402 -7101

30