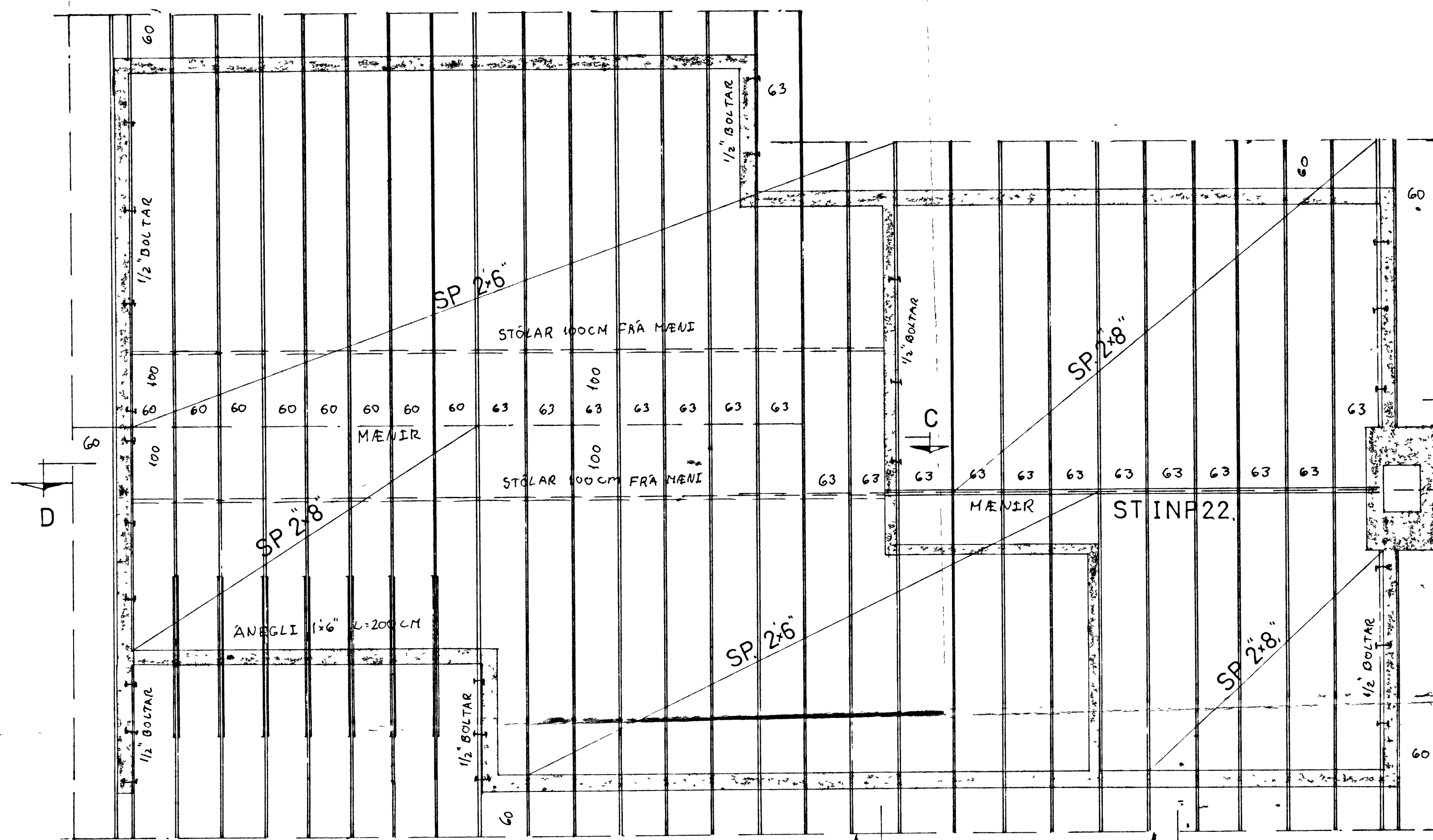
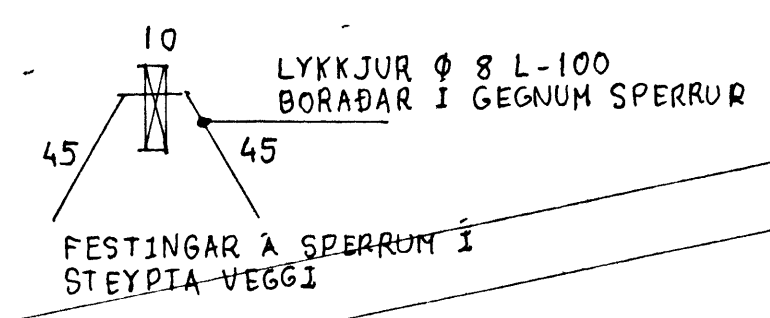


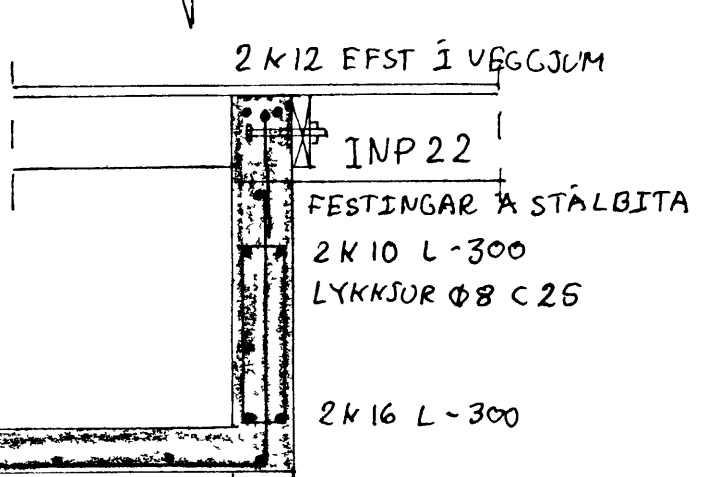
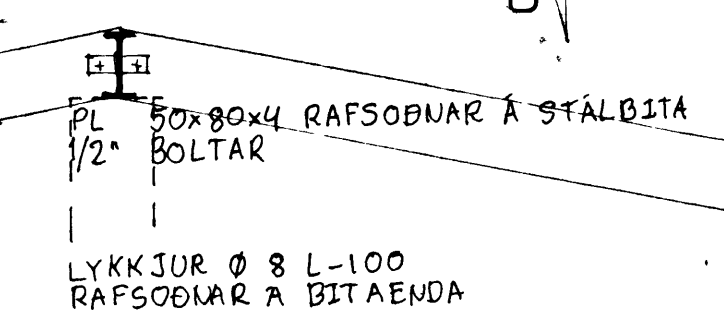
Handwritten calculations and notes in the top right corner, including a vertical sum of 180 and 180, and a horizontal sum of 222.



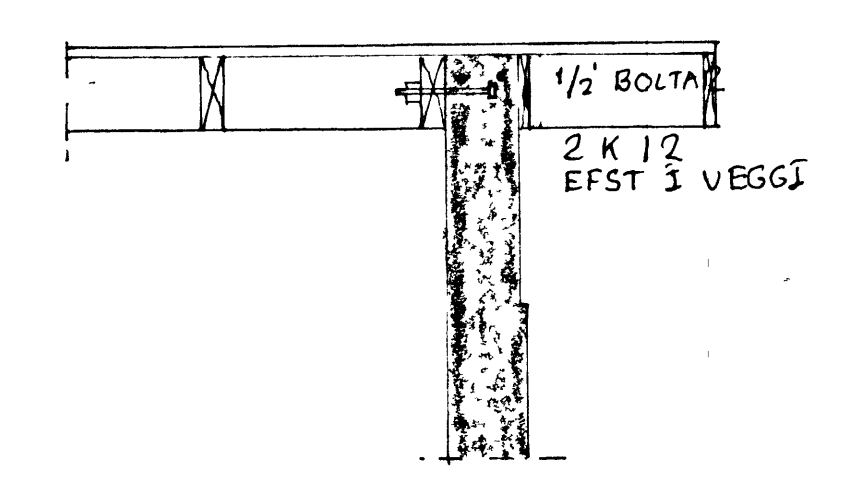
**SKÝRINGAR**  
 SPERRUR OG STÓLA SEM LIGGJA Í EBA  
 AÐ STEYPU SKAL FÚAVERJA MEB VIÐUR-  
 KENNODU FÚAVERNAREFNI ALLUR DAKSAUMUR  
 OG BOLTAR SKAL VERA GALV STALBITA  
 OG FESTINGAR SKAL RYÐHREINSA OG  
 MALA MEB RYÐVARNARMALNINGU  
 EFST Í VEGGI KOMA 2K12 HEILUM HORN



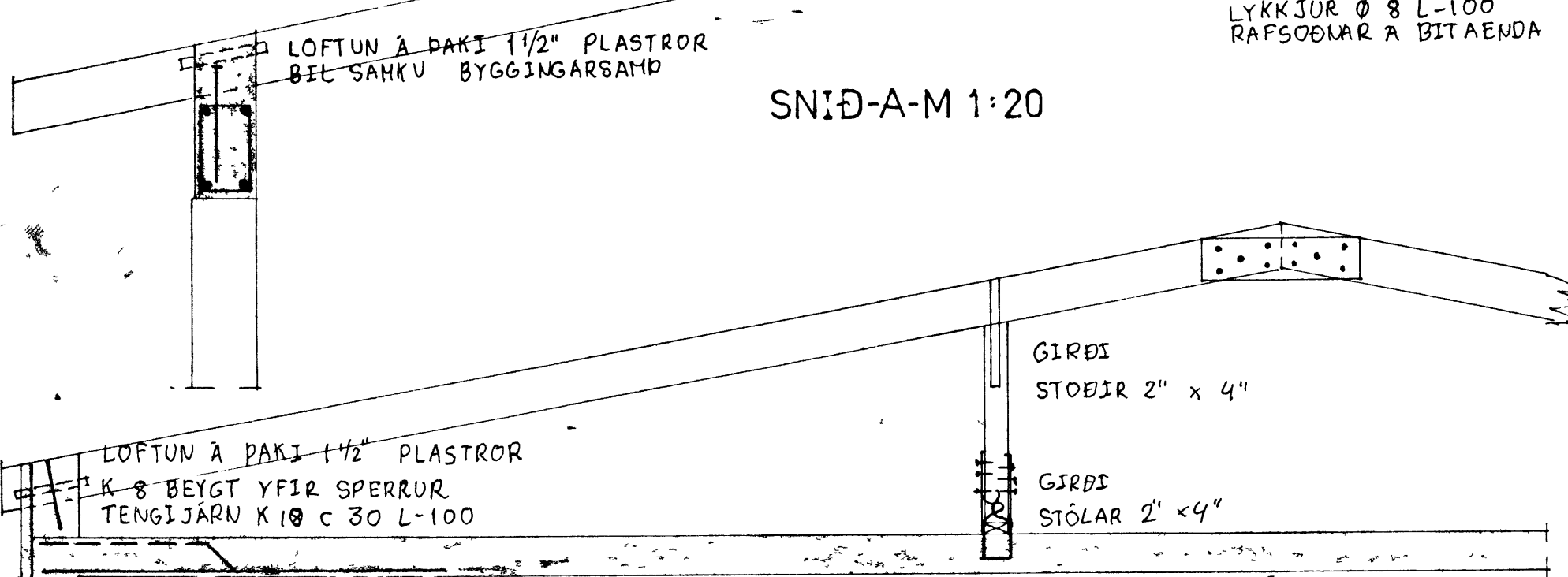
SNID-A-M 1:20



SNID-C-M 1:20.



SNID-D-M 1:20



HRAUNTÚN-46-

VIDAR M ADALSTEINS TÆKNIFR

1 50 1 20