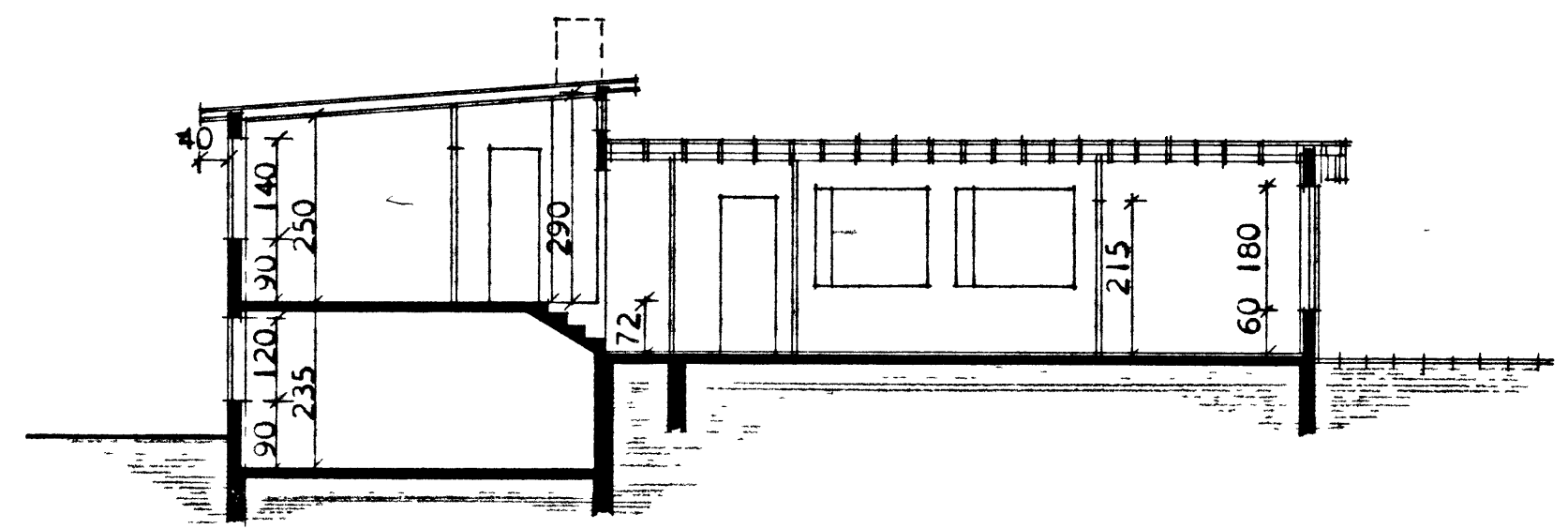
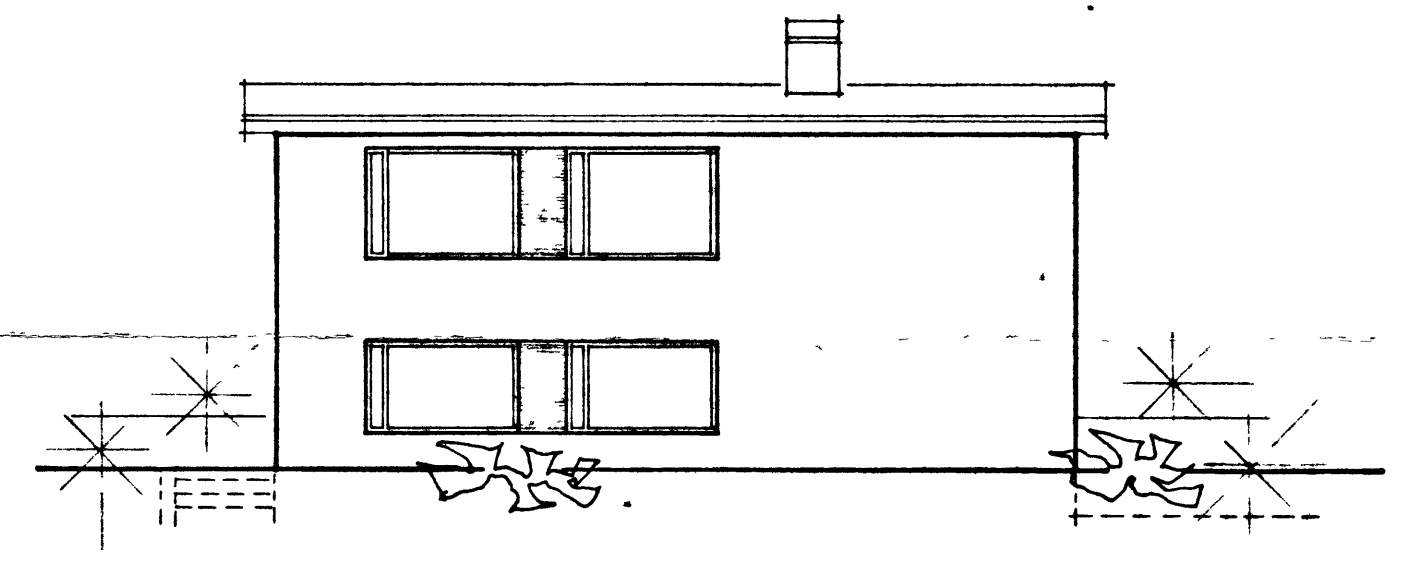
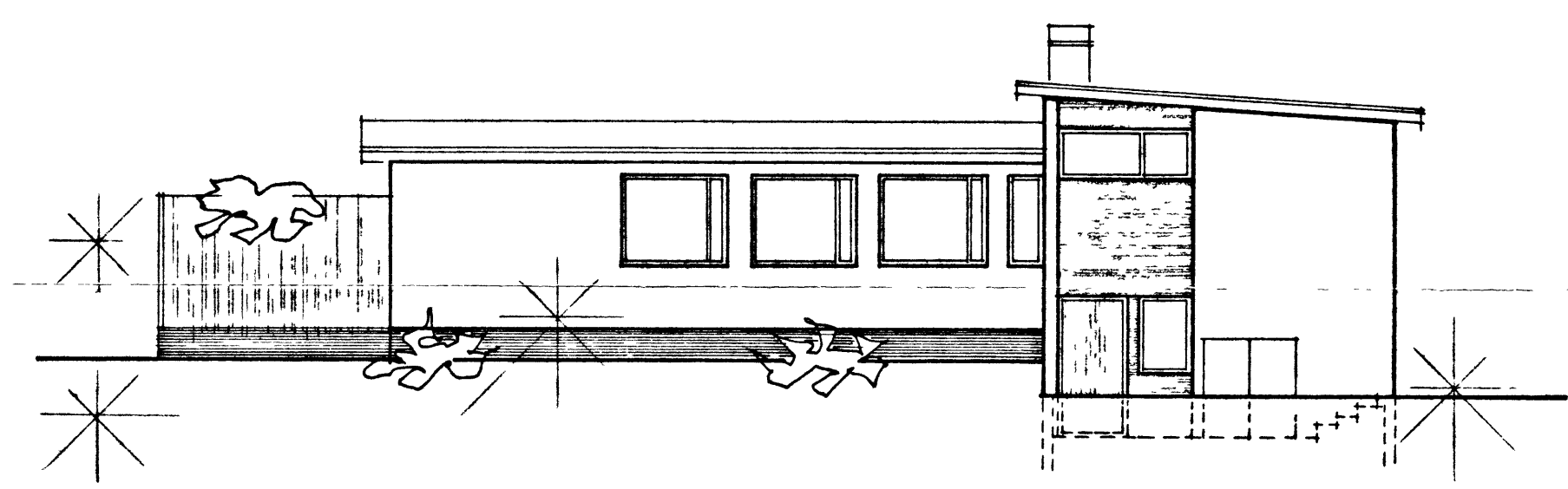
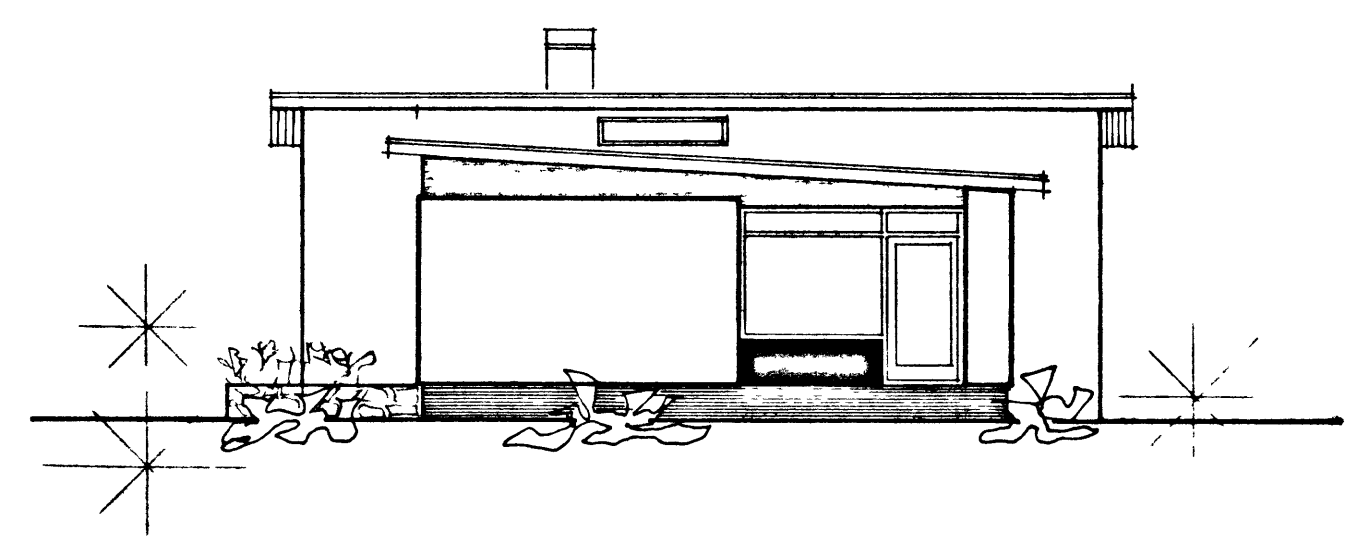
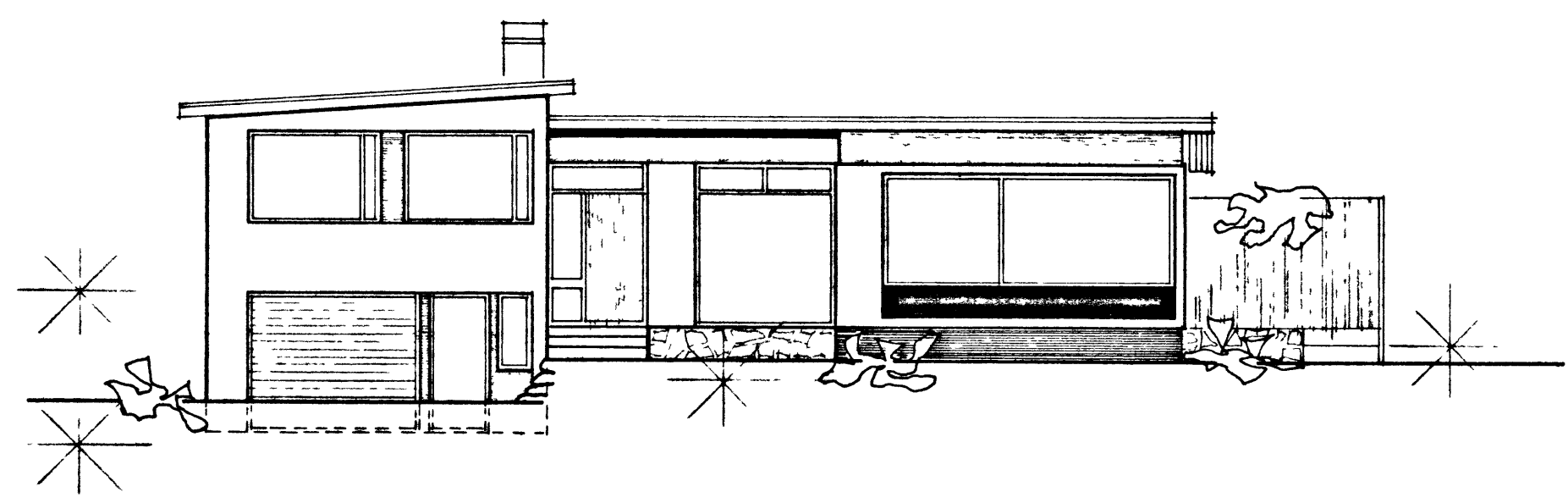
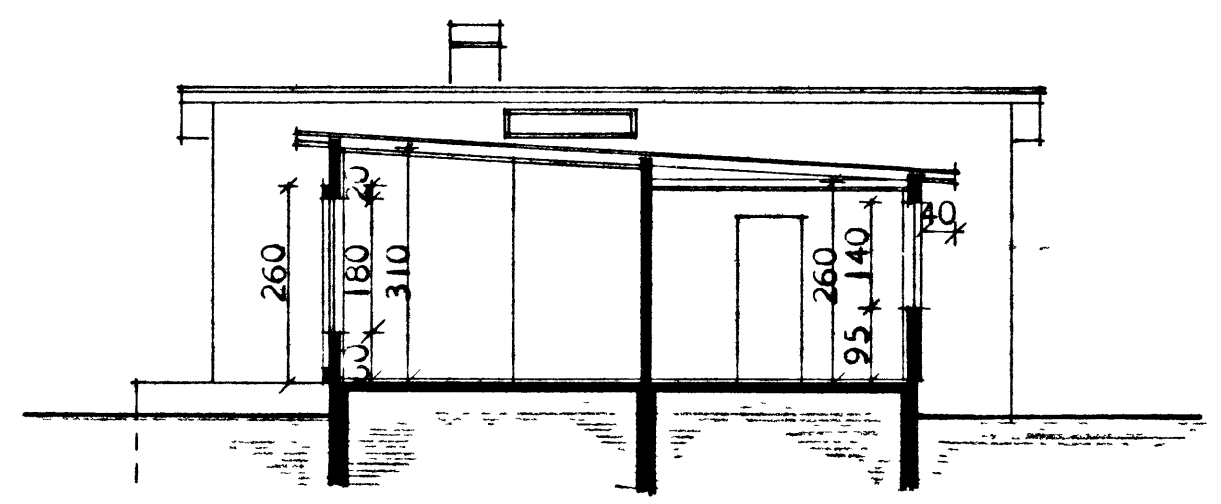


Hrauntún 35

Bygging: Atli S. Stefánsson
 Málari: Magnús Sigurðsson



SNEIÐING B - B



SNEIÐING A - A

HÚSNÆÐISMÁLASTOFNUN RÍKISINS	
ÚTLITSMYNDIR OG SNEIÐINGAR	EINBYLI SHÚS VERK NR. 90 A
MÁL 1:100	BLAÐ NR. 2 FEBR. 1966