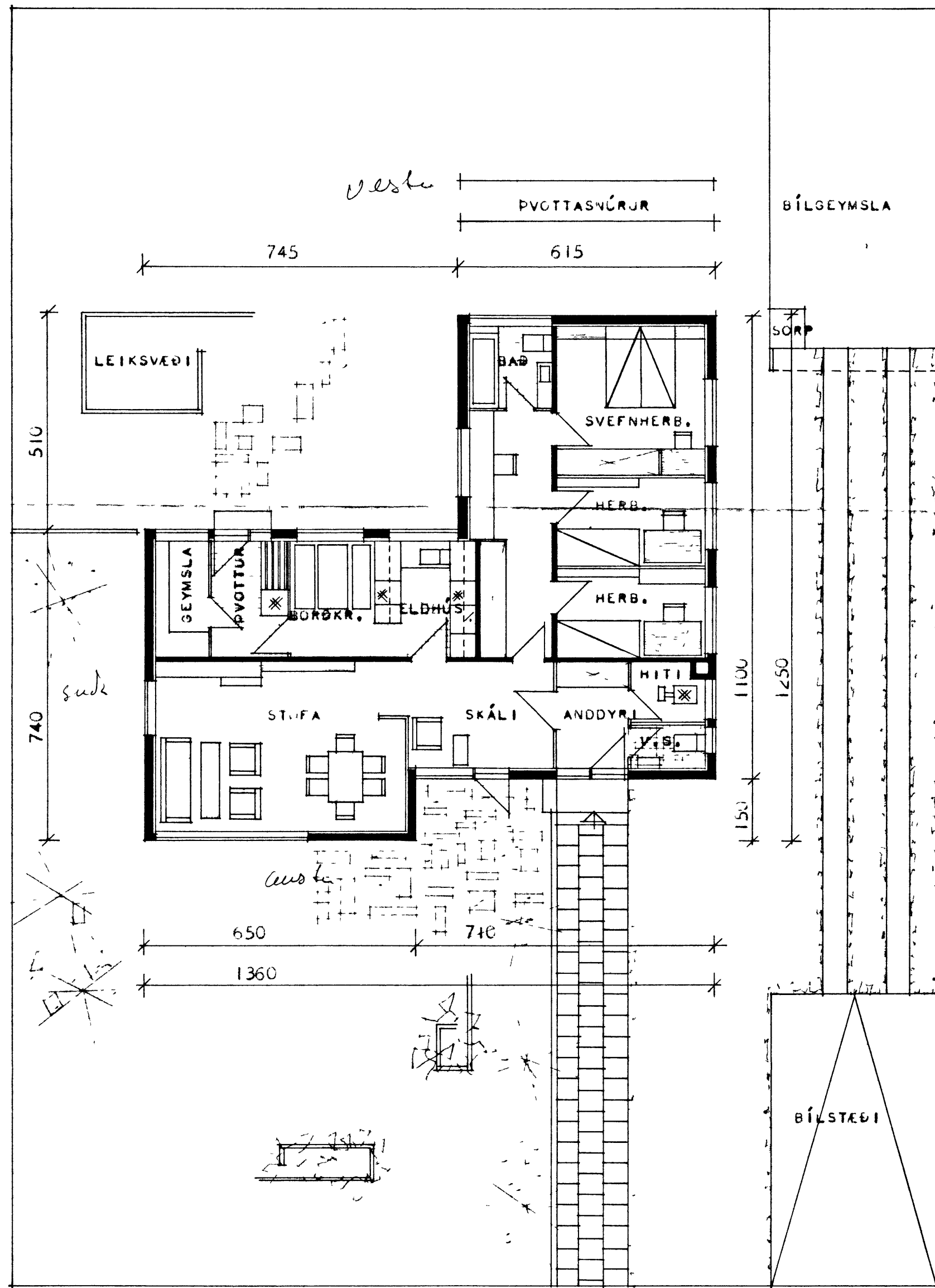
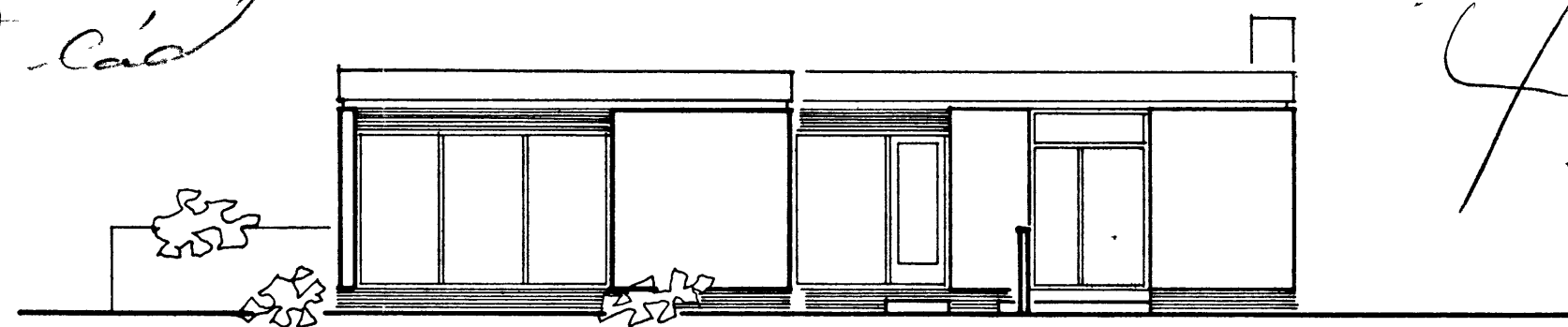
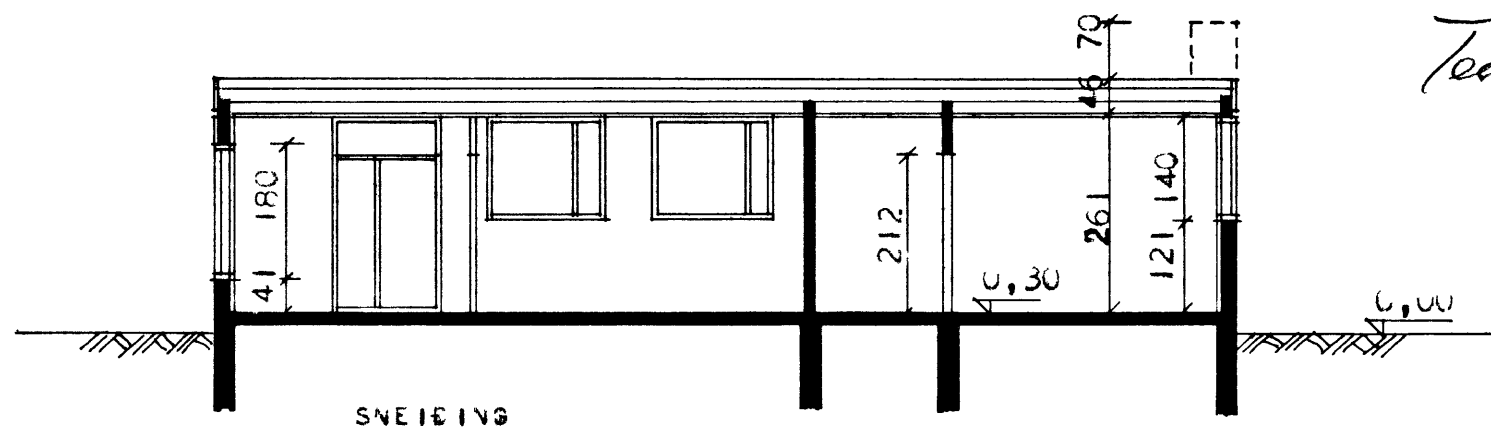


Hús Eirila Valþýssonar Höfðaveg 42

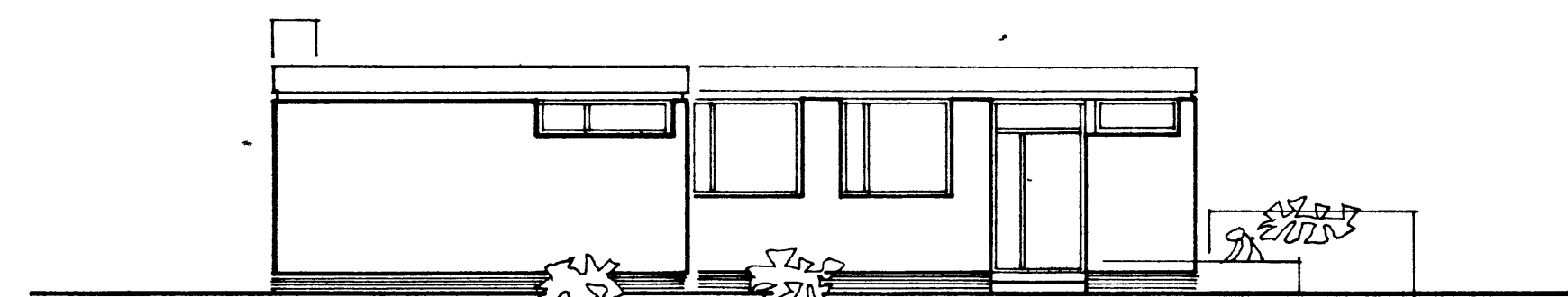
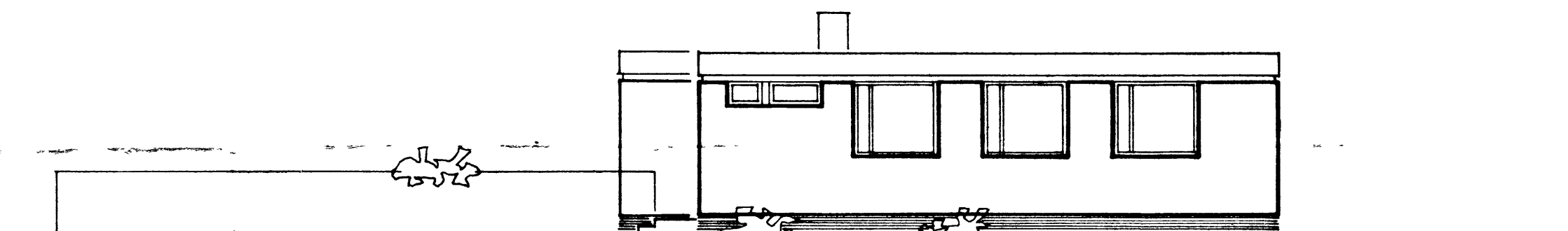
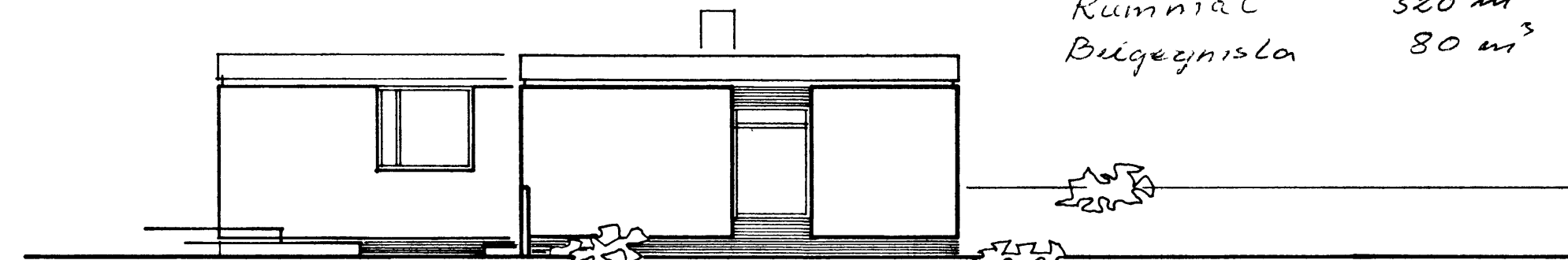
Teknið. Láð

42

Sallys Drahtömm  
Húsnáð  
s. Hinnarann f. h. Bygging hf.  
Hjörleifer Guðmason



BRÚTTOFLATARNÁL ---- 121,3 m<sup>2</sup>  
NETTOFLATARNÁL ---- 106,0 m<sup>2</sup>  
Rúmmál 320 m<sup>3</sup>  
Búgagnisla 80 m<sup>3</sup>



HÚSNÁÐISÁLASTOFNUN RÍKISINS	
GRUNNMYND OG ÚTLITSMYNDIR MÁL 1:100	EINBYLISHÚS VERK NR. <b>73</b> BLAÐ NR. I MÁRZ 1954

Magnús Árnir Magnússon