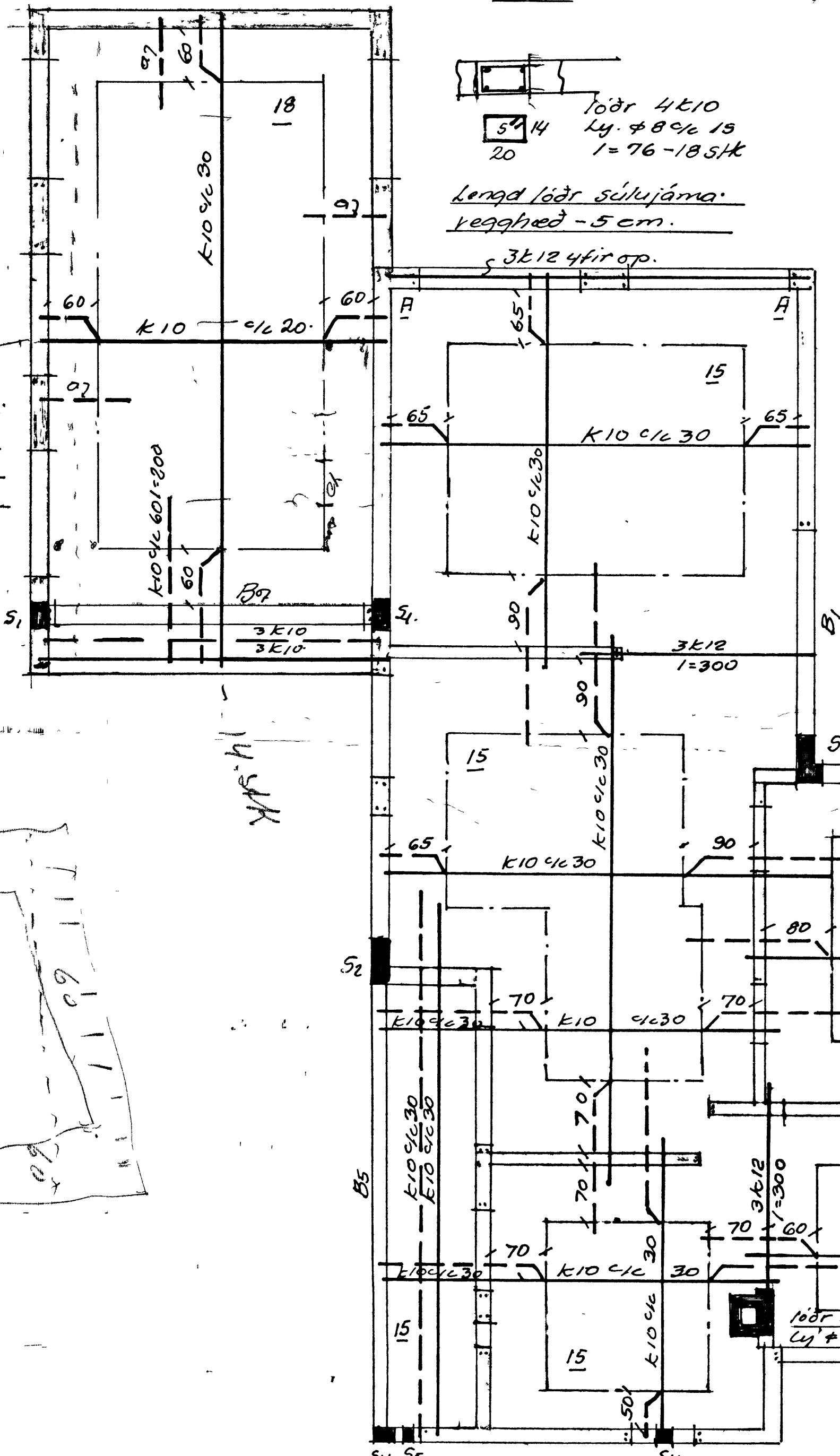
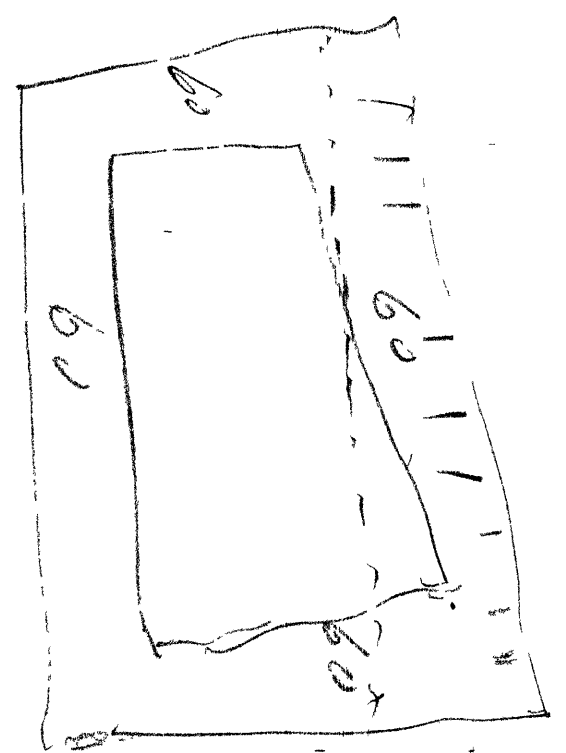
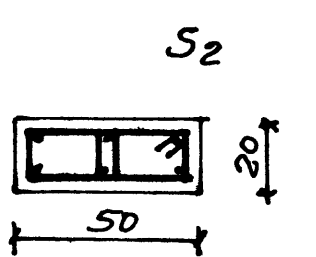


a k10 c/2 30 gangi
 50 i n br vegg og
 beygd i ein brin
 plötu l=150.

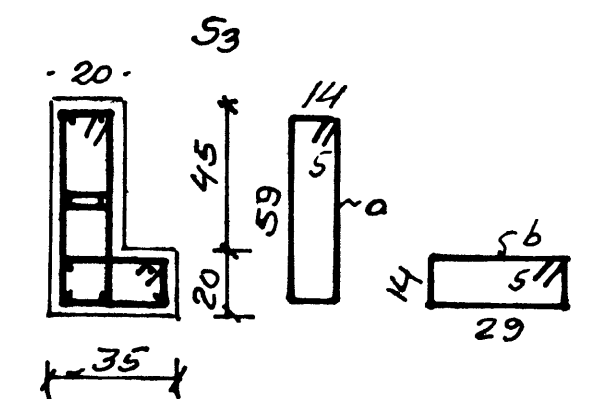


Lengd lödr súlujama.
 Veggþed - 5 cm.

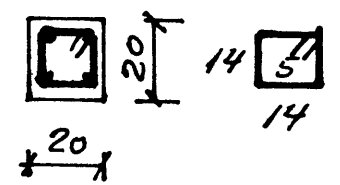
3k12 yfir op.



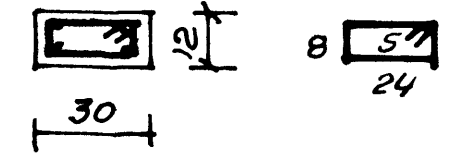
lödr 6k10 l=270
 Ly ϕ 8 c/2 15
 l=126-18 stk. + krykkjur



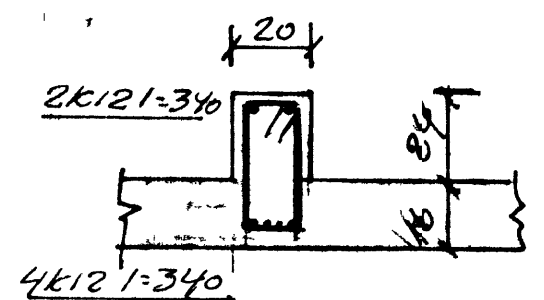
lödr 9k10 l=270
 Ly ϕ 8 c/2 15
 a; l=156-18 stk
 b; l=96-18 stk



lödr 4k10 l=270
 Ly ϕ 8 c/2 15
 l=66-18 stk.



lödr 4k10 l=270
 Ly ϕ 8 c/2 12
 l=74-22 stk



Ly ϕ 8 c/2 20
 l=110-16 stk

Sökkjal 20 cm ó frostfriudýpi
 og hvíli á miðelli. Ekio larett efst
 í sökkla og neðst í litusökkla líka.

Veggja skypa 5 120

Lottaskypa 5 160

Kambstál k40 tákna k; $r_1 = 2000 \frac{kg}{cm^2}$

Stál st 37 tákna $r_1 = 1300 \frac{kg}{cm^2}$

Límhvortis glugga og dyraop

komi 2k10, nema 3k10 yfir opin

Jámin nau minnst 50 út fyrir

opin

— — — — — jám i neðn brin plötu

- - - - - jám i ein brin plötu

— · — · — her annaðhv jám uppbergf

k10 c/2 30 tákna 10 mm kambstál

lagt með 30cm bili frá miðu á mitt

jám o. stru

Benedikt B Siquardsson
 verkfr
 Höfðavegur nr. 45
 Vestmannaeyjum.

M	1:50	Jámhent skypa
	1:20	
D	1:74	Lott yfir jarðþed
		Bilskjirspak

A aukajám 4k10 l=150 lögd, kross i báðar brinir plötu

A hæðastilum lögd, ytn brin útveggja lödr. lengd