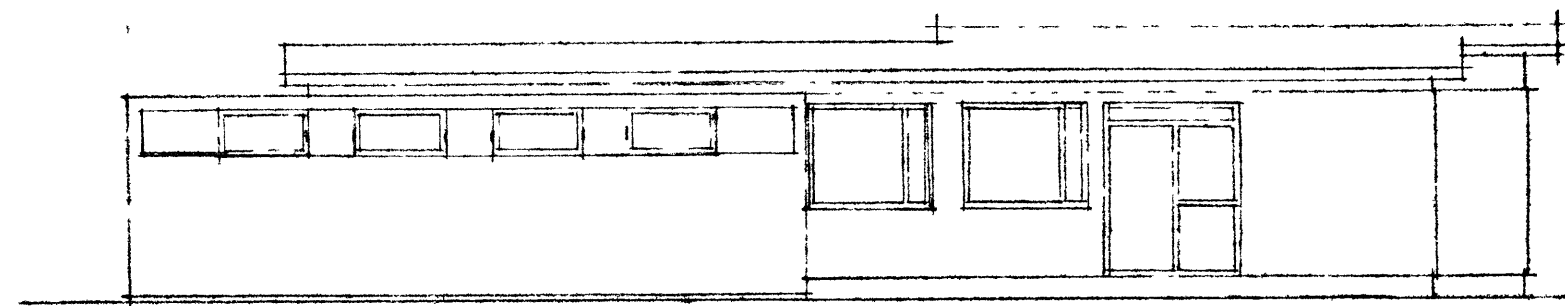
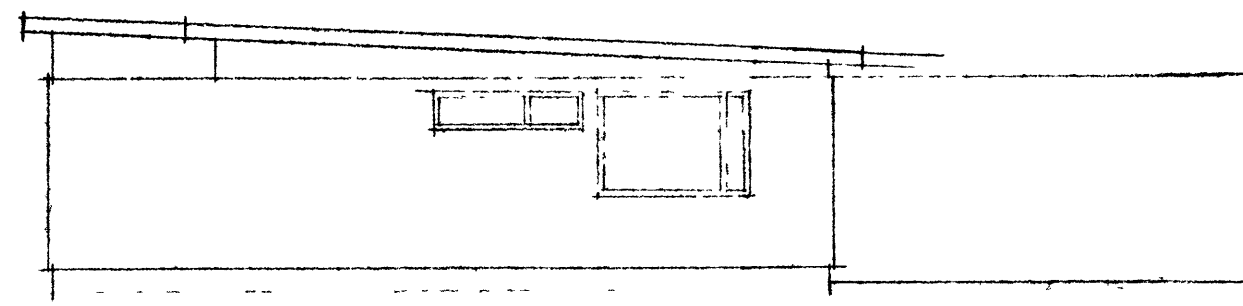


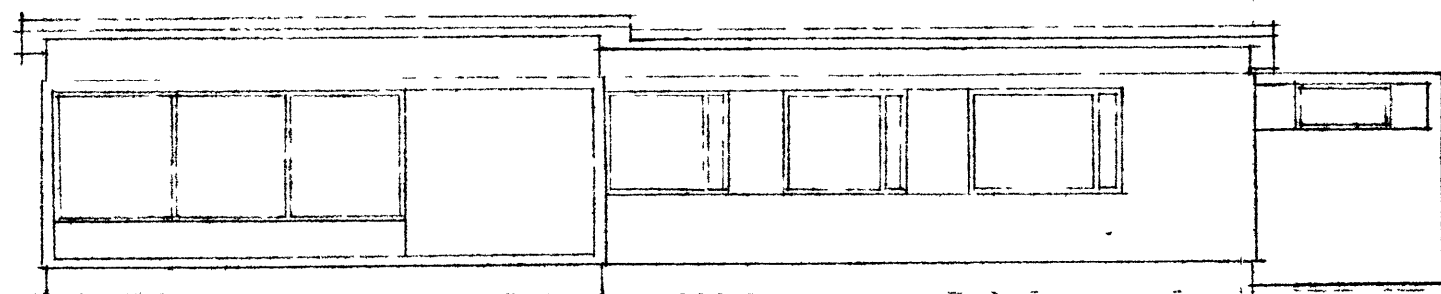
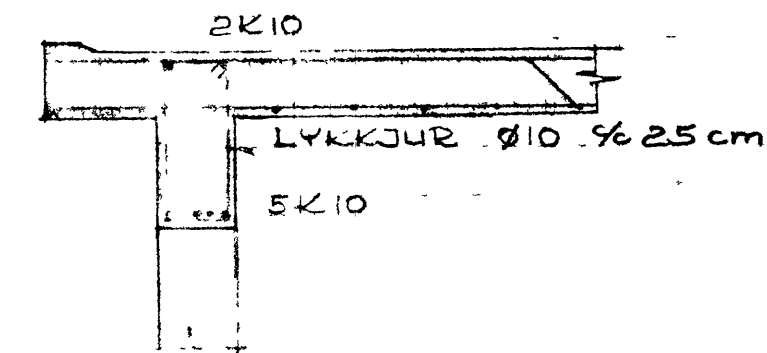
# HÖFÐAVEGUR 3



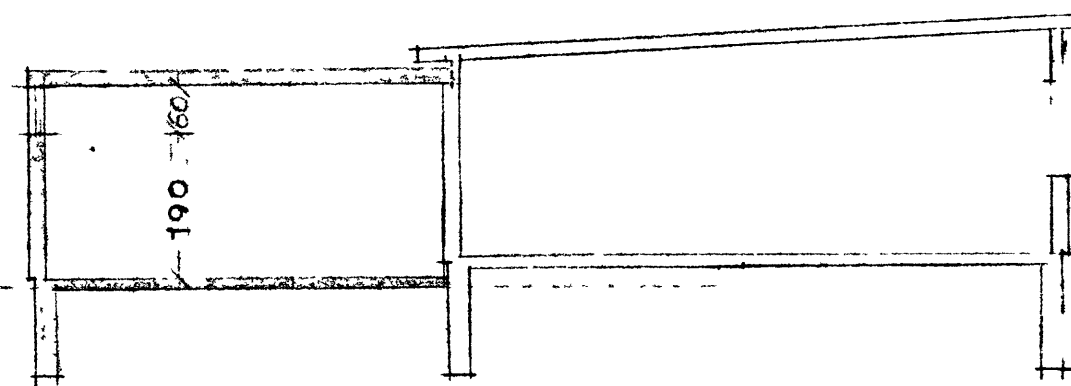
AUSTURHLÍÐ



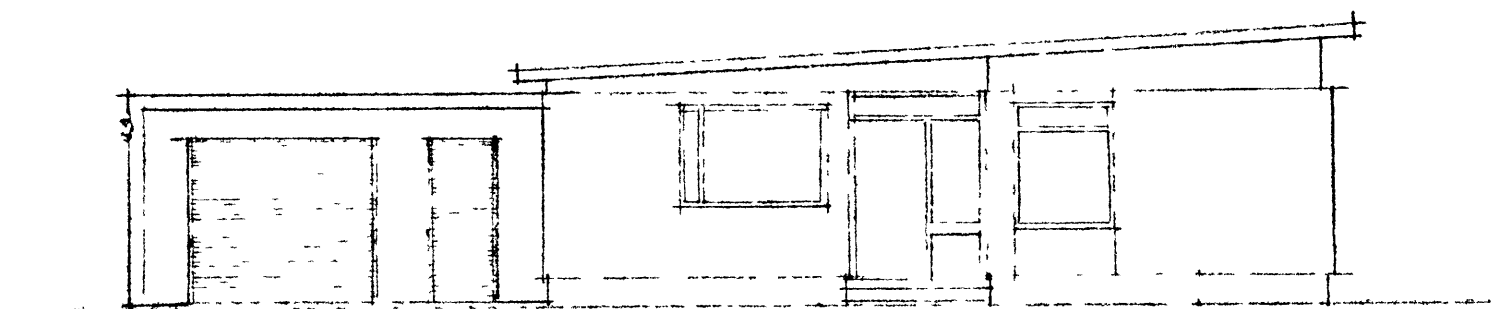
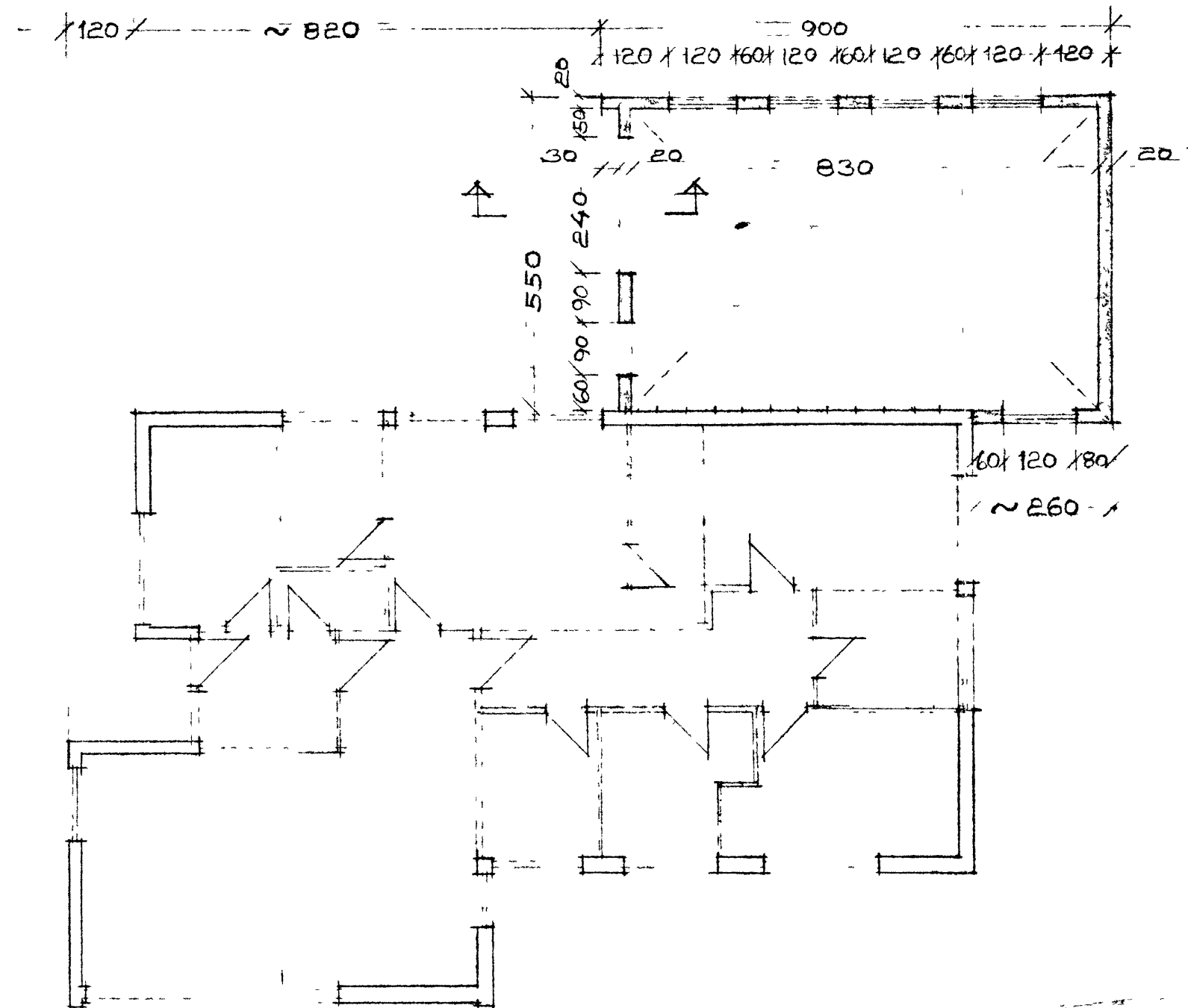
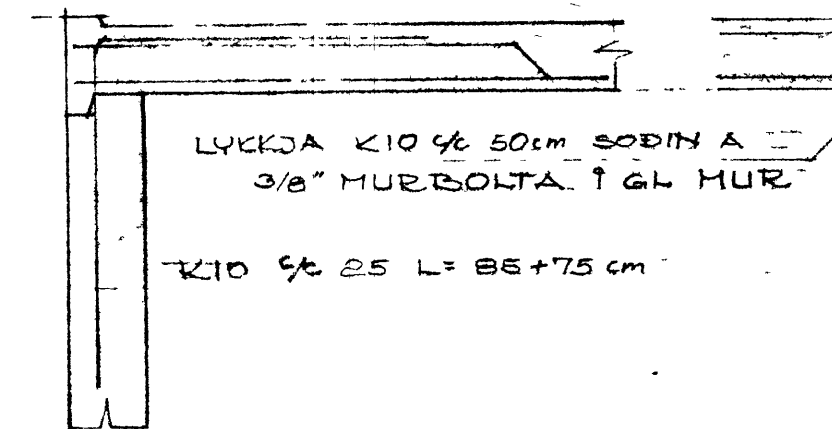
SÚÐURHLÍÐ



VESTURHLÍÐ



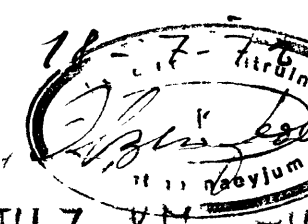
SKURÐUR 1.100



NORÐURHLÍÐ

SKYFINGAR  
STEYPA B 250  
JÄRN KS 40 MEKKT K  
" ST 37 MEKKT Ø  
PLATA BENDIST K10 % 20 cm L BÄD  
ANNAD HVETT JÄRN BEYGTI EFDI BRU  
FARLAD FFA LINDIESTODU 1/4 LAF  
KINGOH OLL MUKOP KOMI. 2K10 OG 1  
50 CM I STEYPU BÄDUM MEGIN VÍÐ  
SAMFELLU KFÍR FLEIÐI OP  
I HOEDUM 3 K10 ÚR GRUNNI OG BEYGIS  
100 A PLÖTU  
GLATTA EKAL PLÖTU UM LEIÐ OG

ramp. i byggn



DALL H ZOFHODIASSI TAKIÐ. HELLAGÖTULY VM. SIF  
HÖFÐAVEGUR 30 VM. HUS- STEFAN OLAFSSON  
VIÐBRINGING - BILSKÖR  
GRUNNMYND - UTILIT - SKURÐUR  
MÁL - 100, 1500, 120  
JULI 1972 72.  
TEIÐUR UP

AFSTÖÐUMYND 1.500