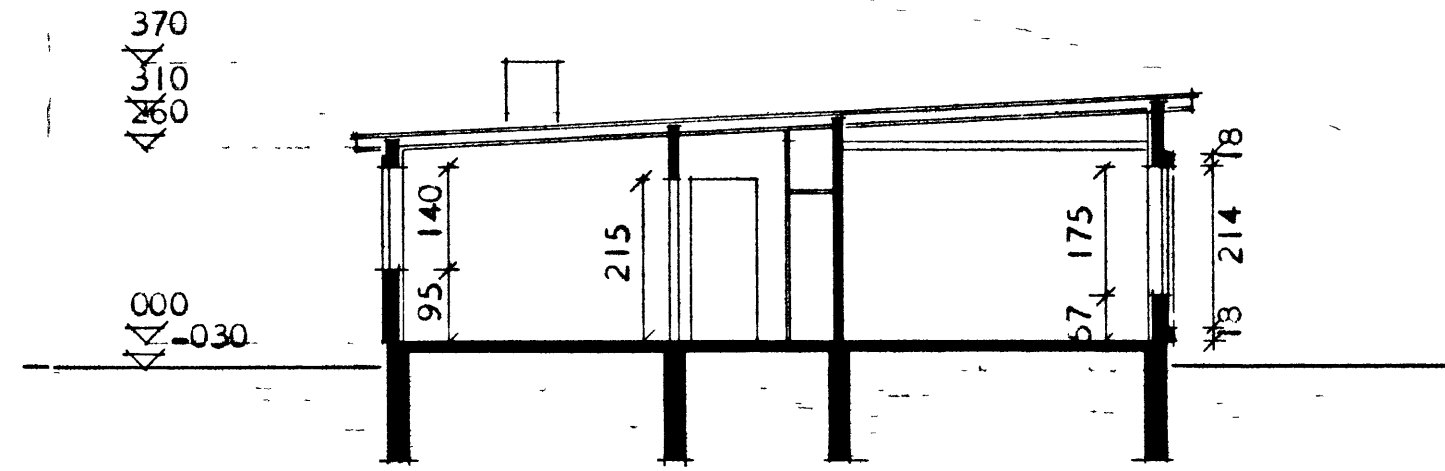
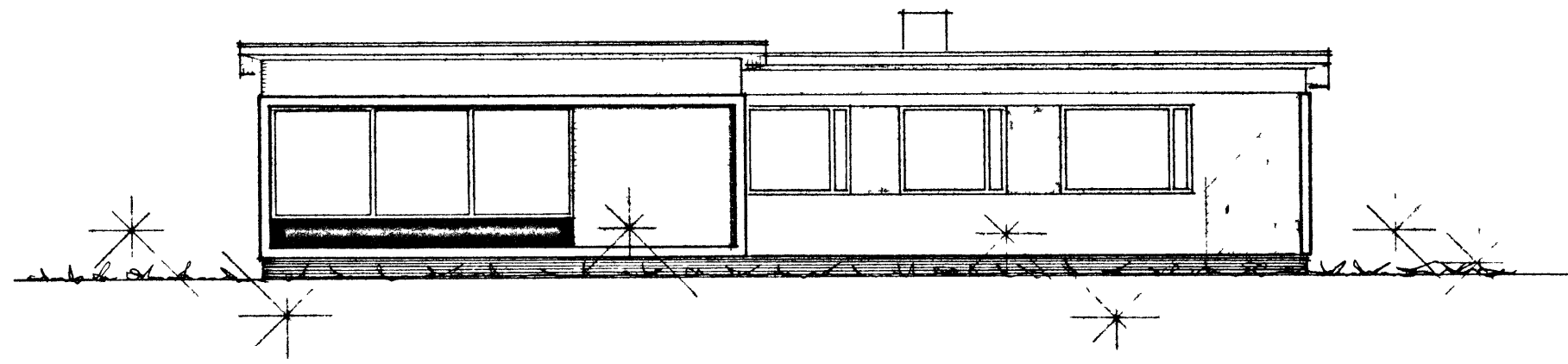


Melior Ólafsson Höfðavegur 30

30

*Tilnefndur
Skjalasýslingur
Málaráði:
Sagurur Sigurðsson
Melior Ó. Ólafsson*

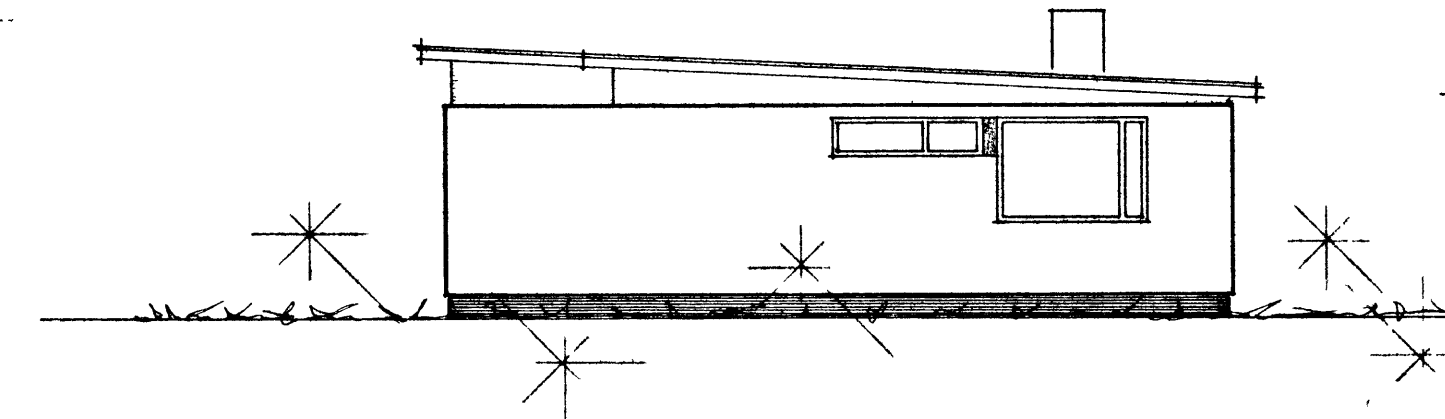
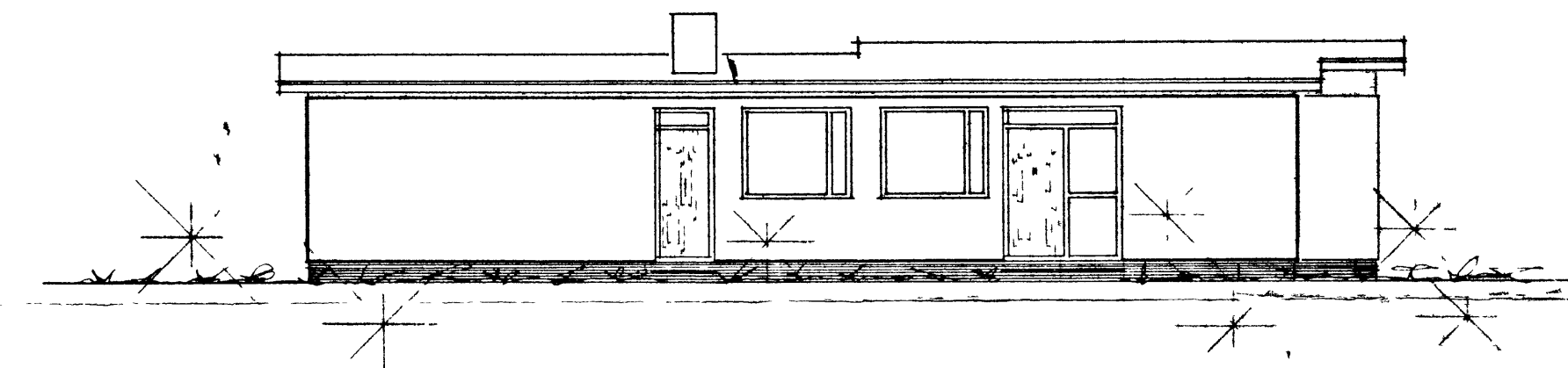
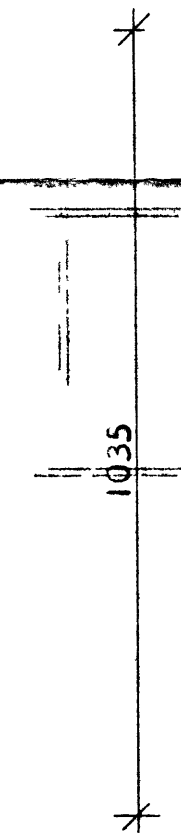
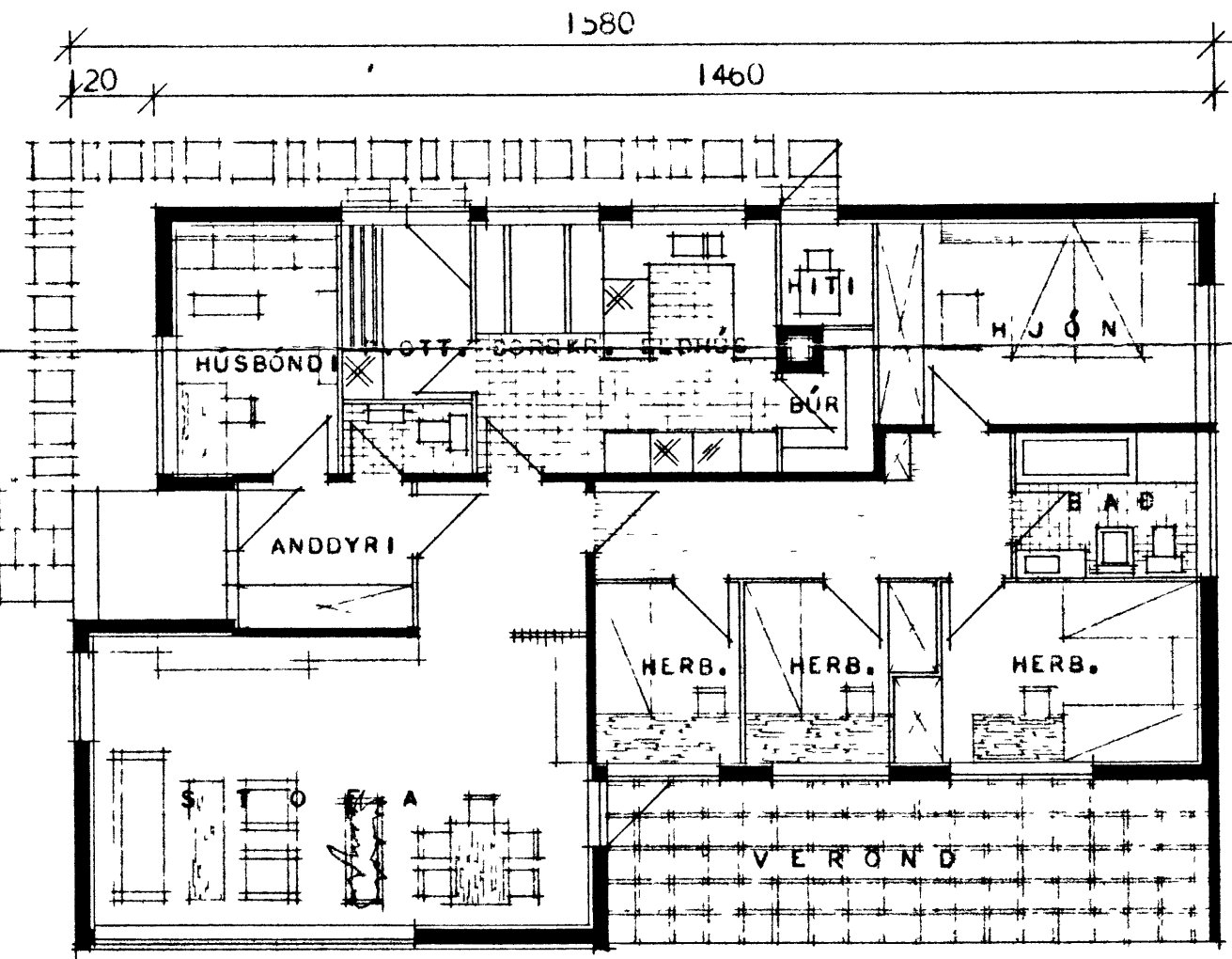


SNEIÐING

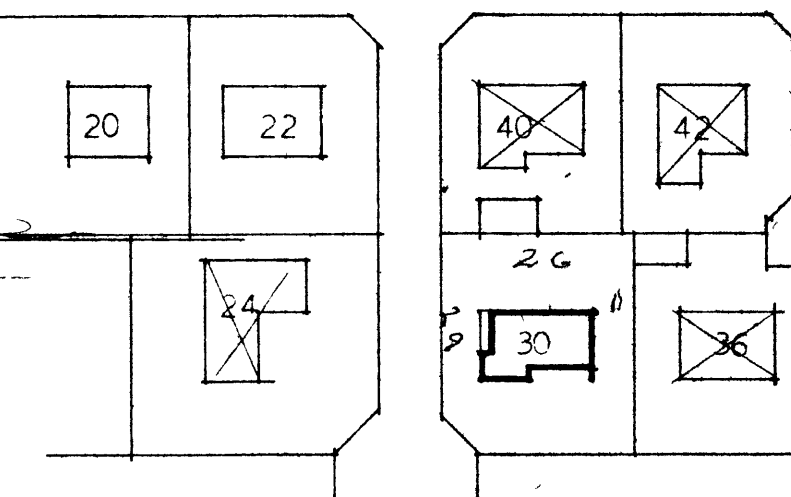
BRÚTTÓ FLATARMÁL HÚSS = 135,90 M²
NETTÓ FLATARMÁL HÚSS = 120,00 M²

ATH. VEGGIR UMHRÉFIS HITAKLEFA SKULU GERDIR
STEINI OG MÚRHÚÐADIR Í HÓLF OG GÓLF.

Tilnefndur



HÖFÐAVEGUR



AFSTODUMYND MÁL 1:2000

HÖSNEDISMÁLASTOFNUN RÍKISINS	
GRUNNMYND, ÚTLIT OG SNEIÐING MÁL 1:100	EINBYLISHA VERK 83 BLAD NR 1 FEBR. 1960

*Sagurur Sigurðsson
Haldór Kalldórsson*

Handwritten calculations: 1720, 1466, 1460, 260, 120, 140, 60-80