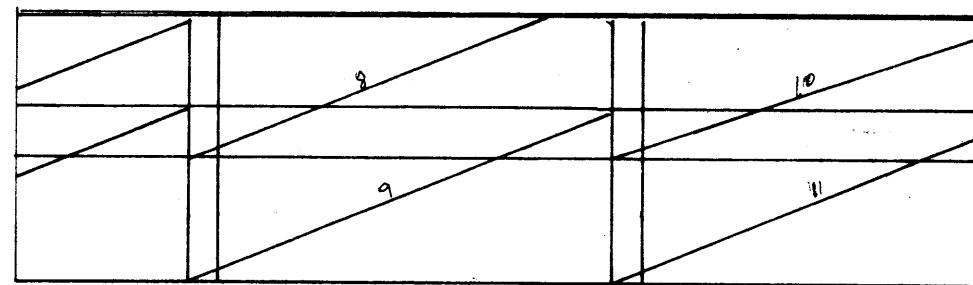
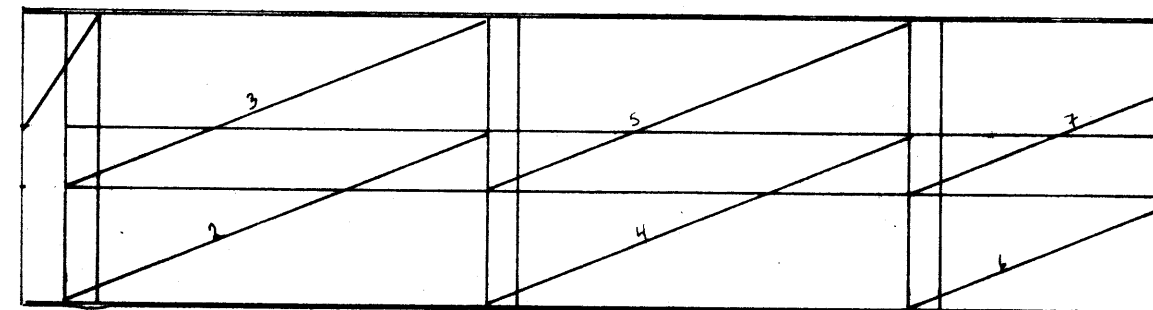


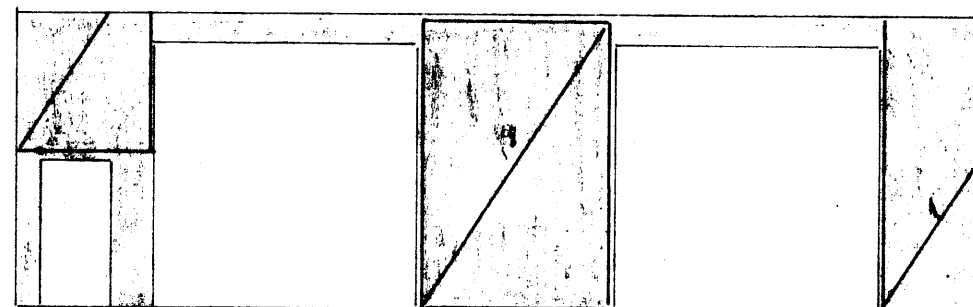
Austur



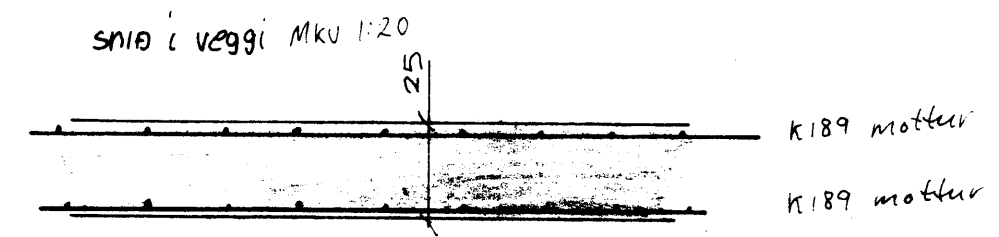
Sudur



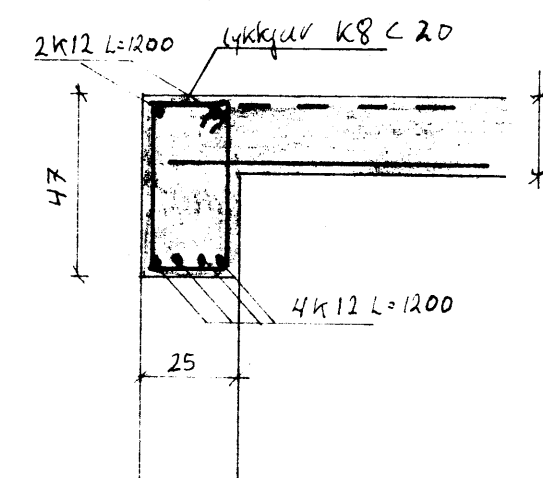
Vestur



Norður



SNIB OFAN VÍÐ HURÐIR MKV 1:20



Steypa í veggjum S-200, súlum, fundamentum súla og loftslönd S-250

36 stk K189 í vegg

SIEHVATUR ARNARSON F.T.F.I	
MKV	1:100
Reikningur	Reykjavík
Dagur	1982.04.28
Blad	7 af 9

Veggir og snið