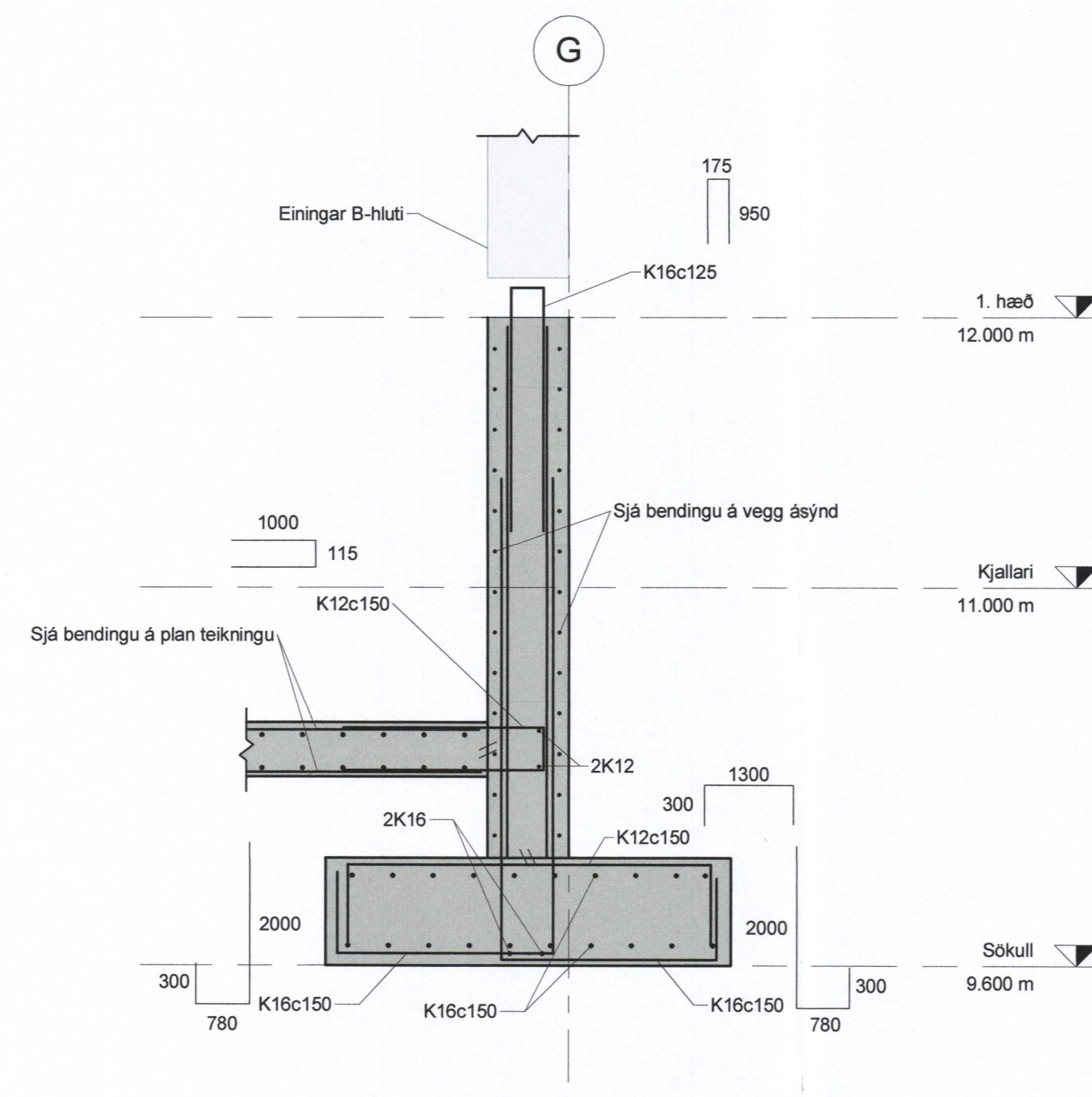
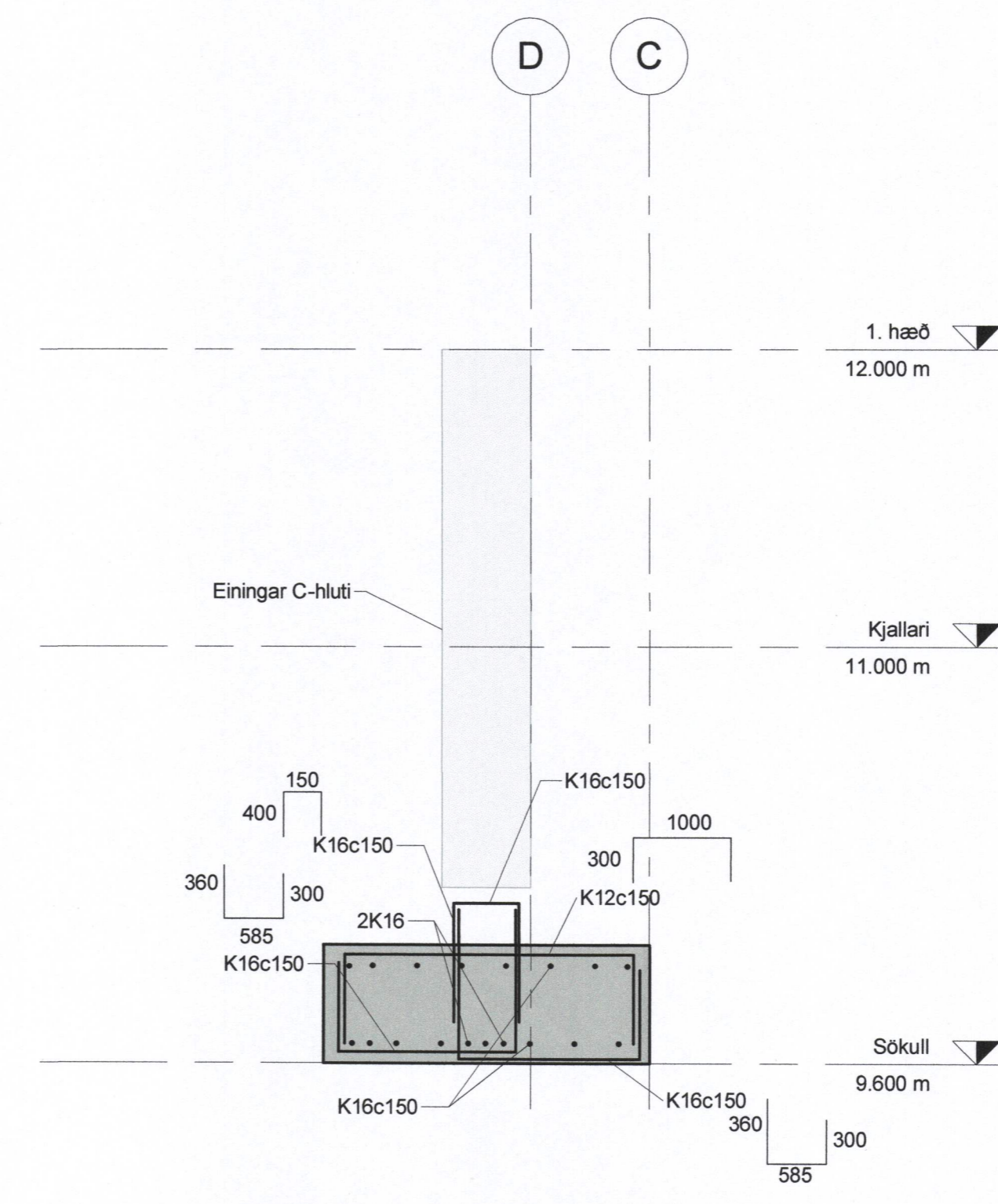


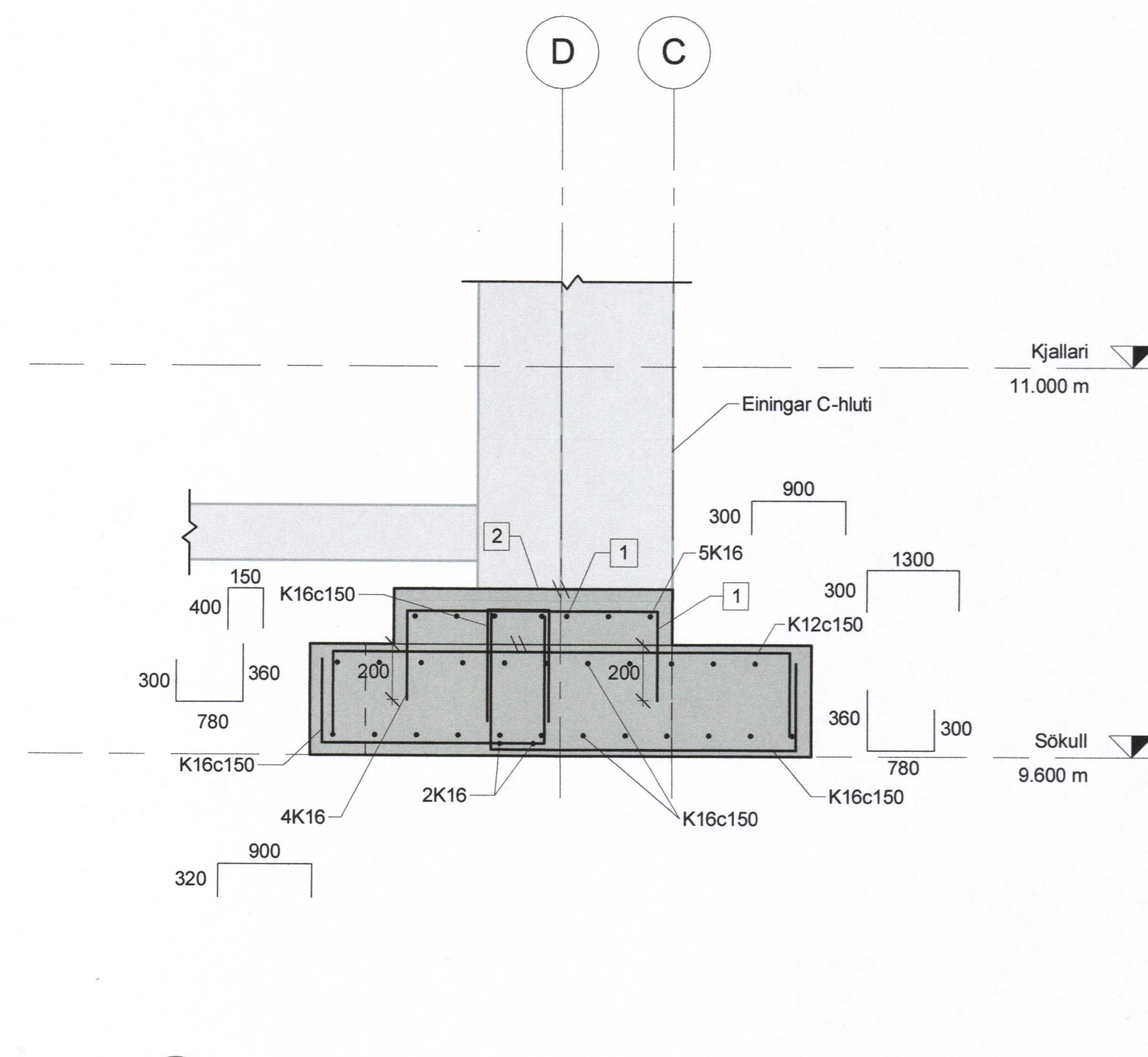
1 SNID
C50.202 1 : 20



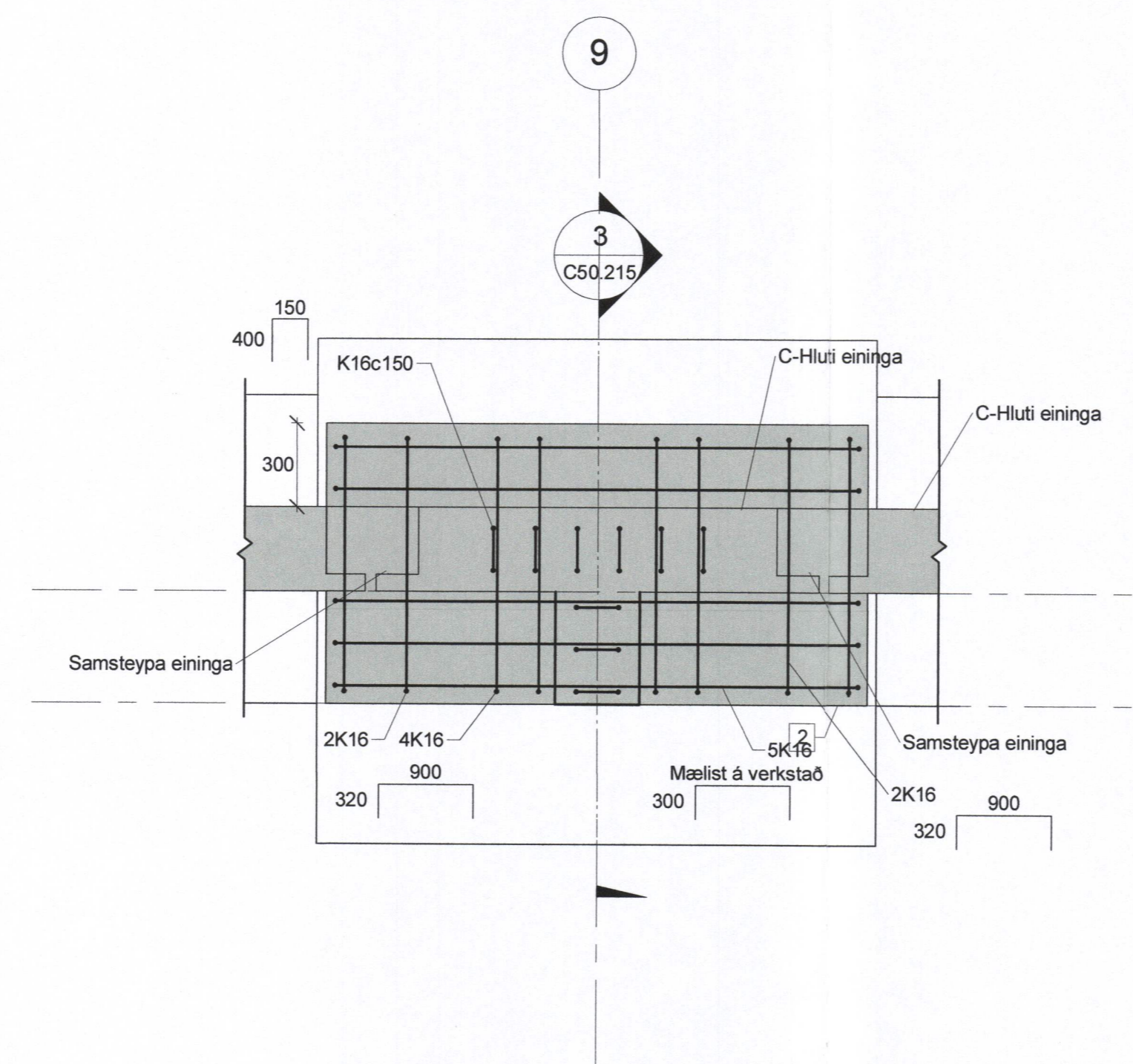
2 SNID
C50.201 1 : 20



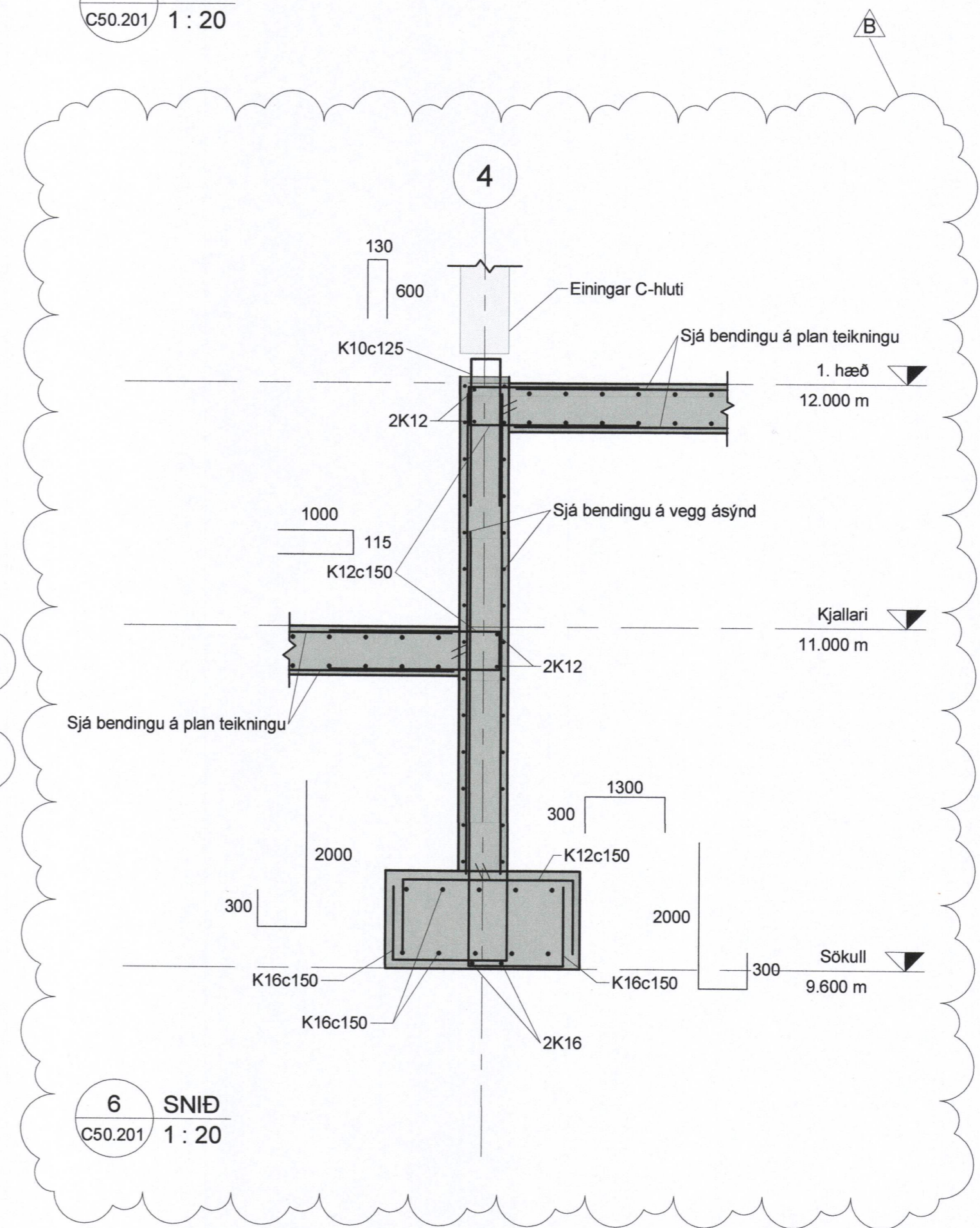
5 SNID
C50.201 1 : 20



3 SNID
C50.215 1 : 20



4 DEILI
C50.201 1 : 20



6 SNID
C50.201 1 : 20



- 1 Borað 200mm inn steypustyrktarjárn og innlimt með Hilti HY-200A eða sambærilegt.
- 2 Steypt saman við einingar.

B	2017-09-28	SNIDI BÆTT VÐ	SJ
A	2017-08-18	VERKTEIKNING	SJ
ÚT.	DAGS.	BREYTING	SAMP.

VERKÍS
081243-4849
HANNAÐ: KPS RYNI: HÁr SAMP.: SJ
VERKFANG: 07257

HS VEITUR HF
Brekustíg 36
260 Reykjanesbær
Sími: 422 5200
Fax: 421 4727
hsveitur@hsveitur.is

HITAVEITA VESTMANNNAEYJUM Varmadæla
Steypstyrktarstál
Undirstöður fyrir forsteyptar einingar og deili

MKV:	1 : 20	DAGS:	08/16/17
KKS FERL:			

TEKON.NR.: C50.215 ÚTG.: B
SAMÞYKKT AF BYGGINGARFULLTRÚA
gottur gudniss 2405654397