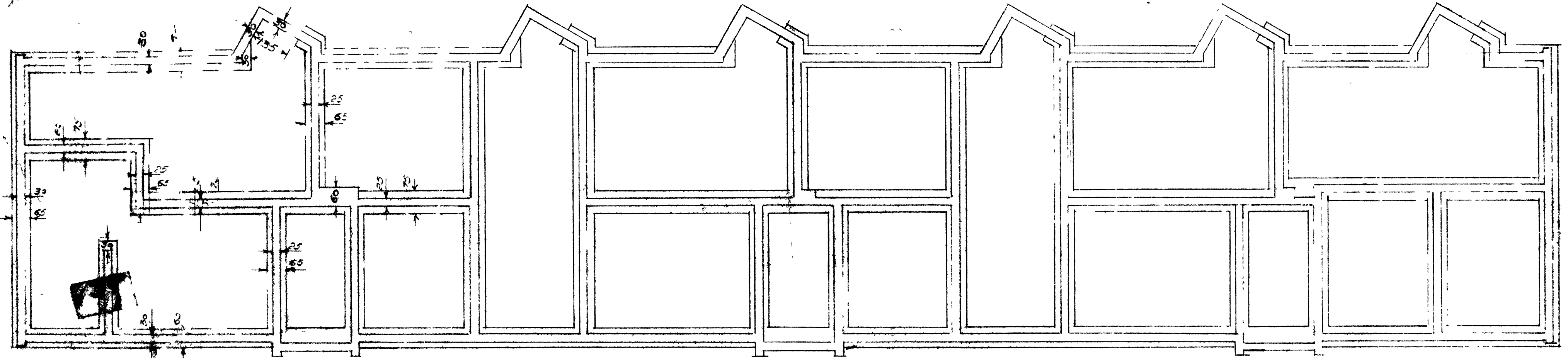
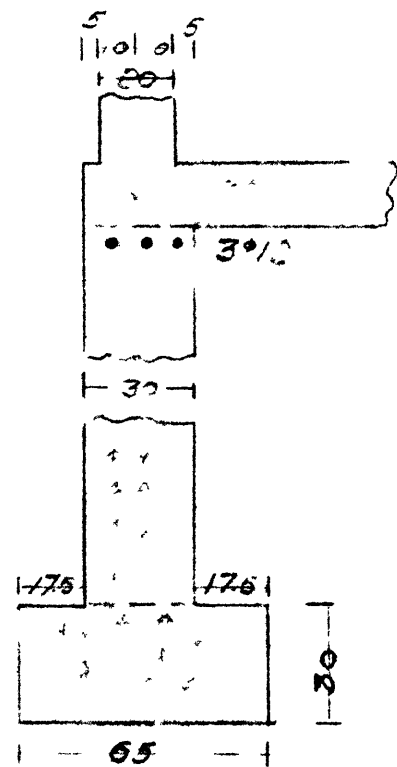


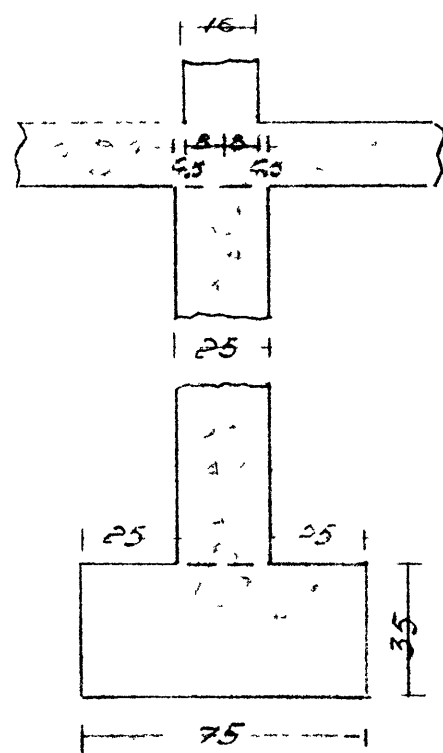
Plan 1:10



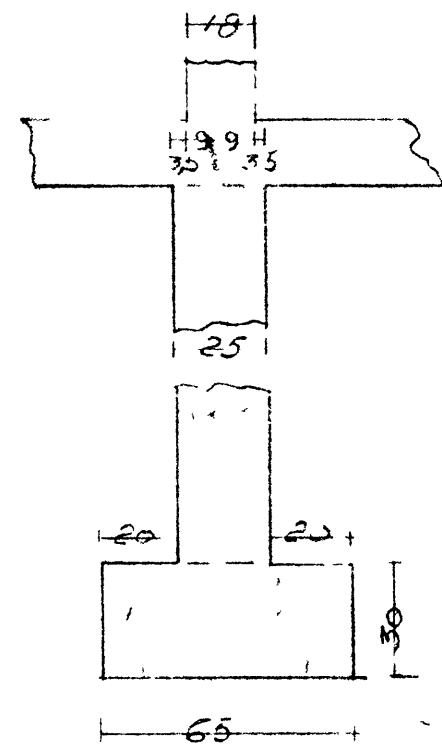
Snið við utveg 1:20



Snið við innvegg langveggar 1:20



Þverveggur 1:20



3 sokkln og undirstöðu komu
220 kg pr m²
Grunnur af ~~grunnur~~
og malarlag. Reitur neð
þar eru t. h. sandlag
leggja 40 kg pr m² undir
5 cm fl. botni

Hasteinsúvegur 60-62-64

Undirstöður

Reykjavík 27-3-1963
Sigurður Þórhvarf