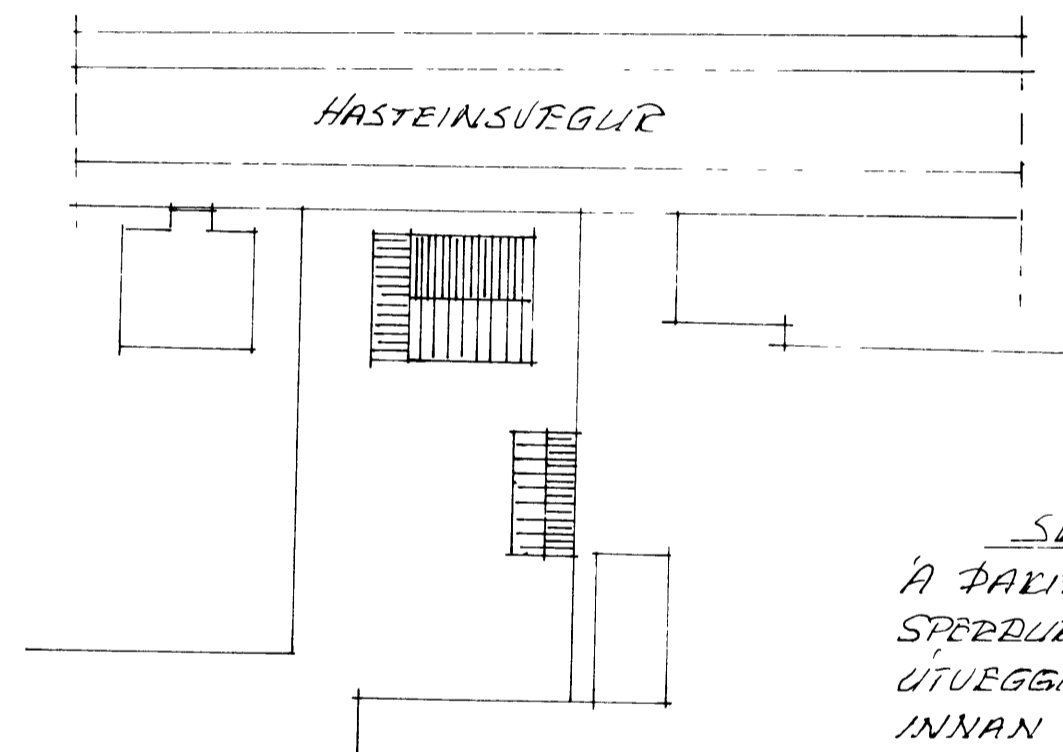
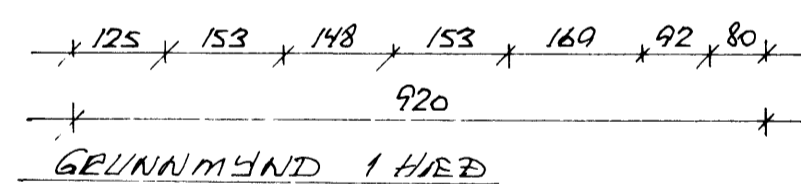
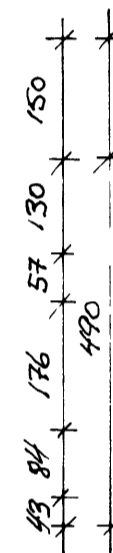
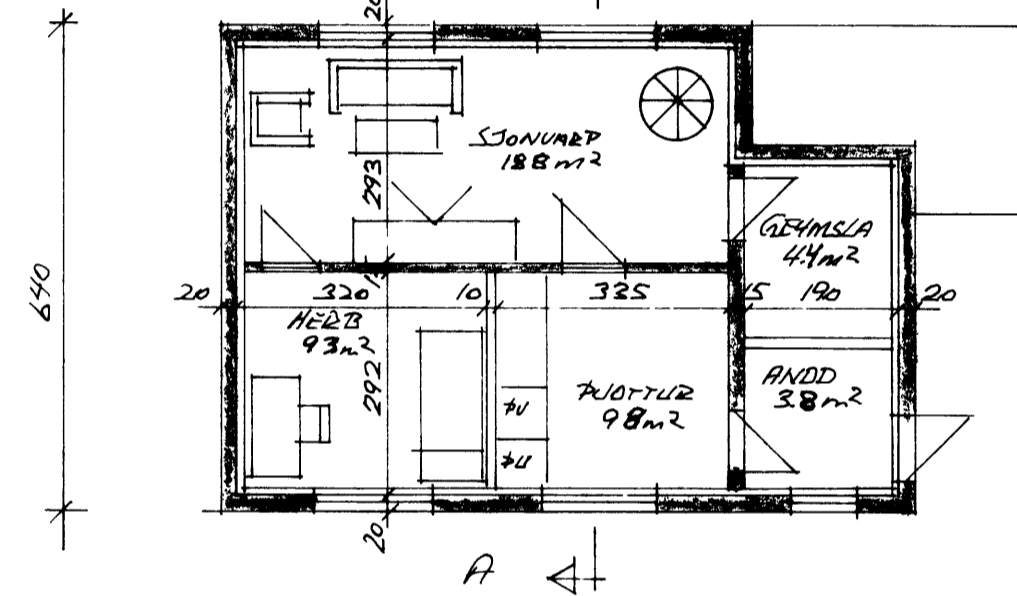
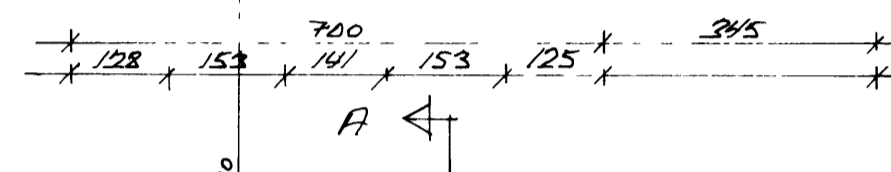
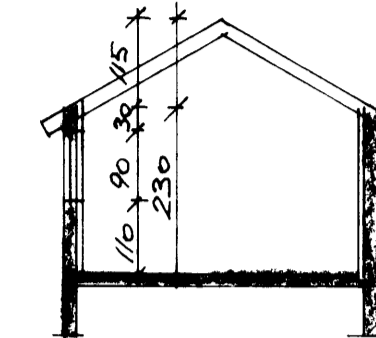
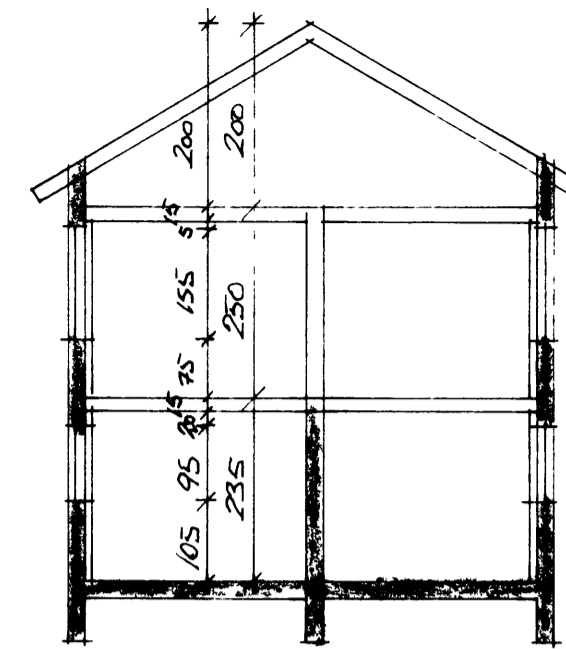
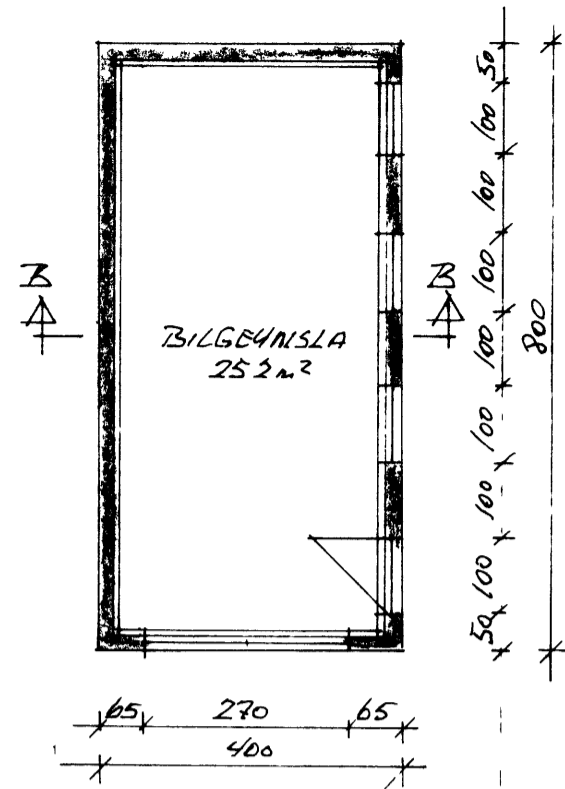


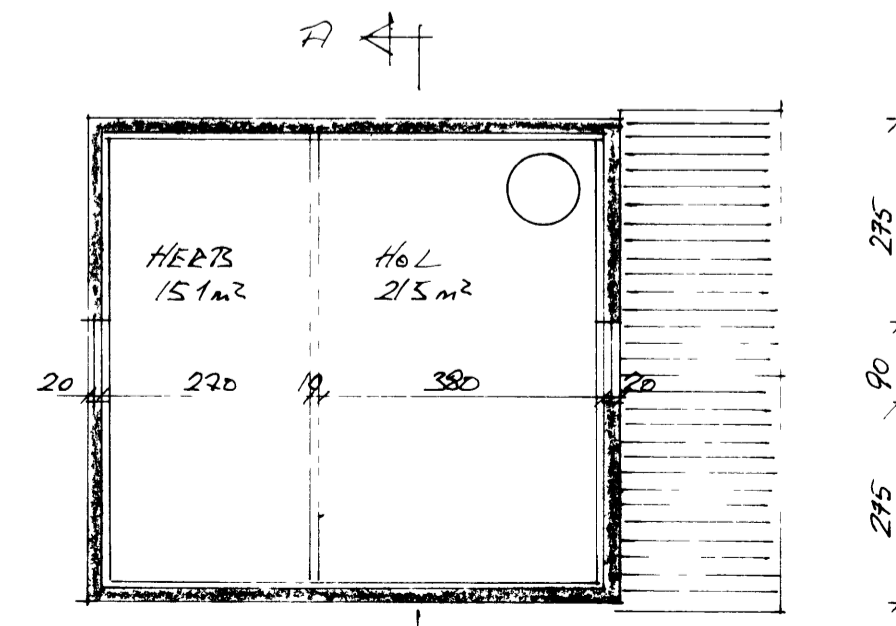
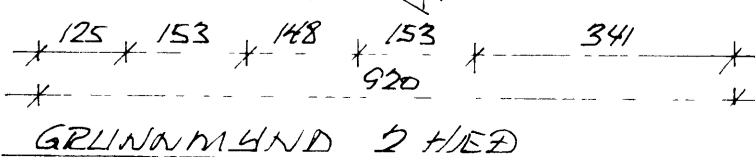
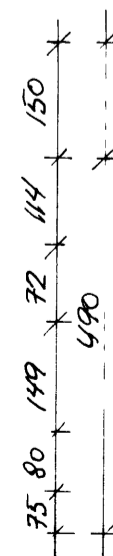
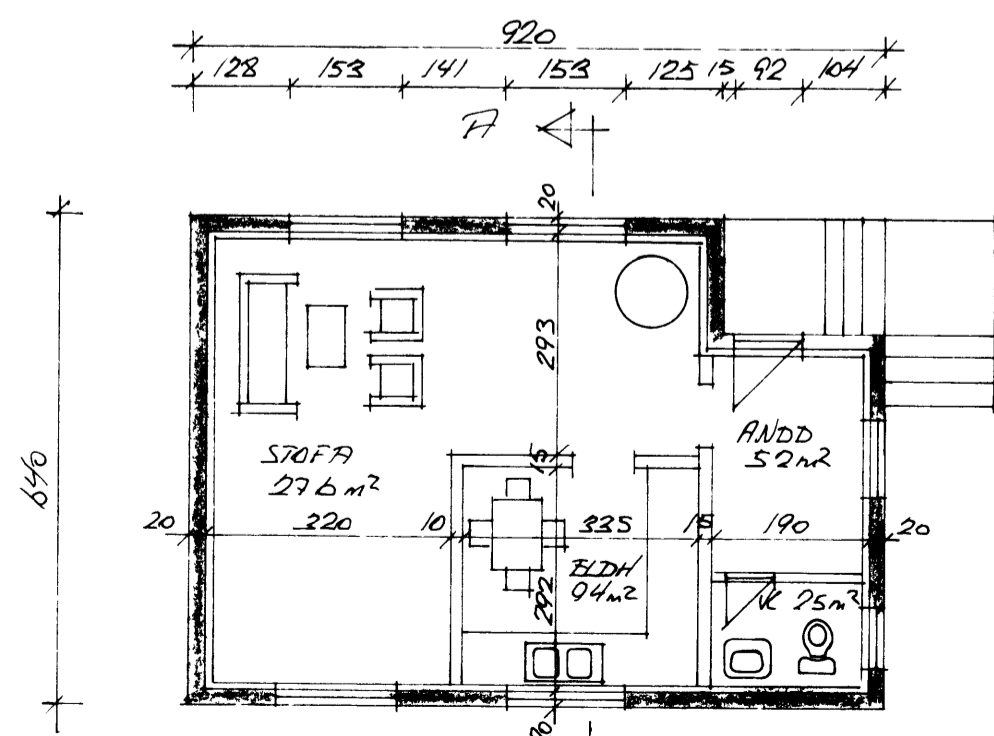
10 APR 1997

Fluss R
BYGGINGARFULLTRUINN I VESTMANNLÆYJUM



AFSTÖÐUMYND 1500

SKYRINGAR
A ÞARÍÐ KEMUR BÆLUTARN, PAPPÍ OG KLEÐNING 25x150 SPÉÐLUR 50x200, EINANGRÆÐ MEÐ ÞAKULL ÚTVEGGIR ERU STEHTIÐ, HÚSIÐ EINANGRÆÐ AÐ INNAN MEÐ 4" STEINULL, ALLIR VEGGIR OG LOFT KLEDD MEÐ SÖNNADLÖTULNI, NÝIR GLUGGAR ÚR ÞRÚSTIFLÚAARÐRI FURU TUBFALT GLER OG ÖPNANLEG ÞÖB ÚR ÖREGONE PINE



GRUNNMUND ÞIS

STARÐIÐ	FLATARMÁL		RÚMMÁL	
	BRÚTTÓ	NETTÓ	BRÚTTÓ	NETTÓ
1 HÆÐ	551 m²	461 m²	1295 m³	1014 m³
2 HÆÐ	551 m²	461 m²	1377 m³	1083 m³
ÞIS	115 m²	103 m²	173 m³	124 m³
SAMTALS	1217-	1025-	2845-	2221-
BILGEHNSLA	320-	252-	92-	687-

HASTEINSVEGLUR Á VESTMANNLÆYJUM
UPPMÆLING - BILSKILIR - ENDURBÆTUR
MKU 1:100 OG 1:500 MARS 97
TEIKN SIGURDÓR Þ. TELNÍÐ