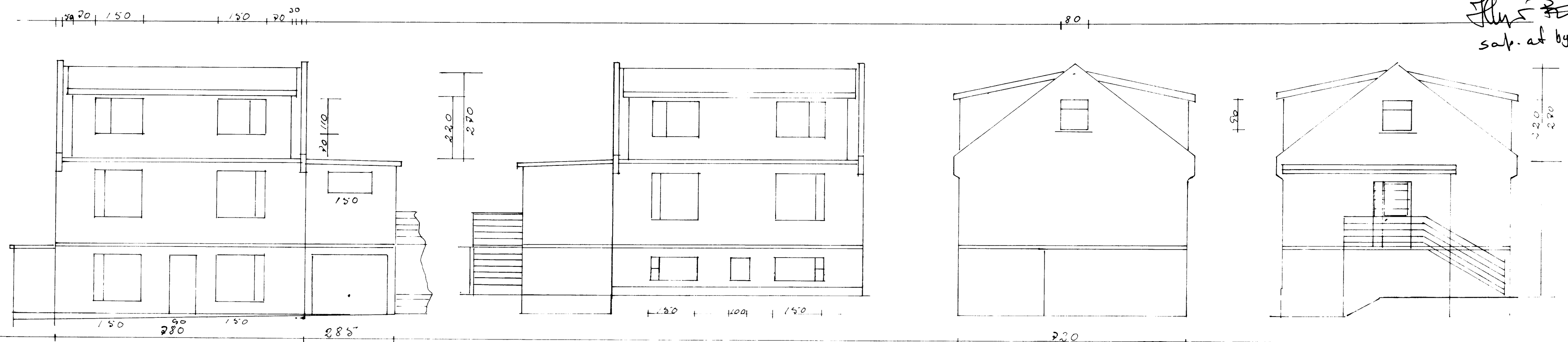


*[Signature]*  
 sáþ. af byggingarfulltrúa



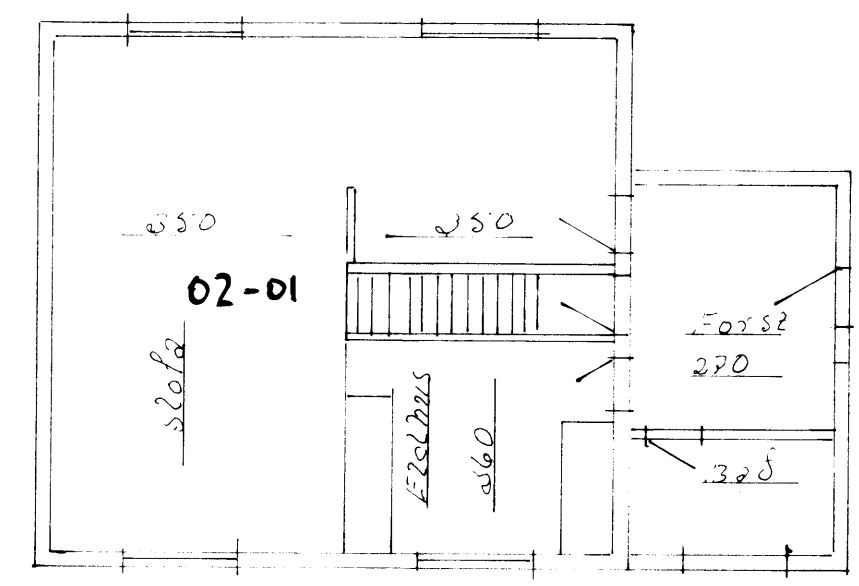
Norður

Súður

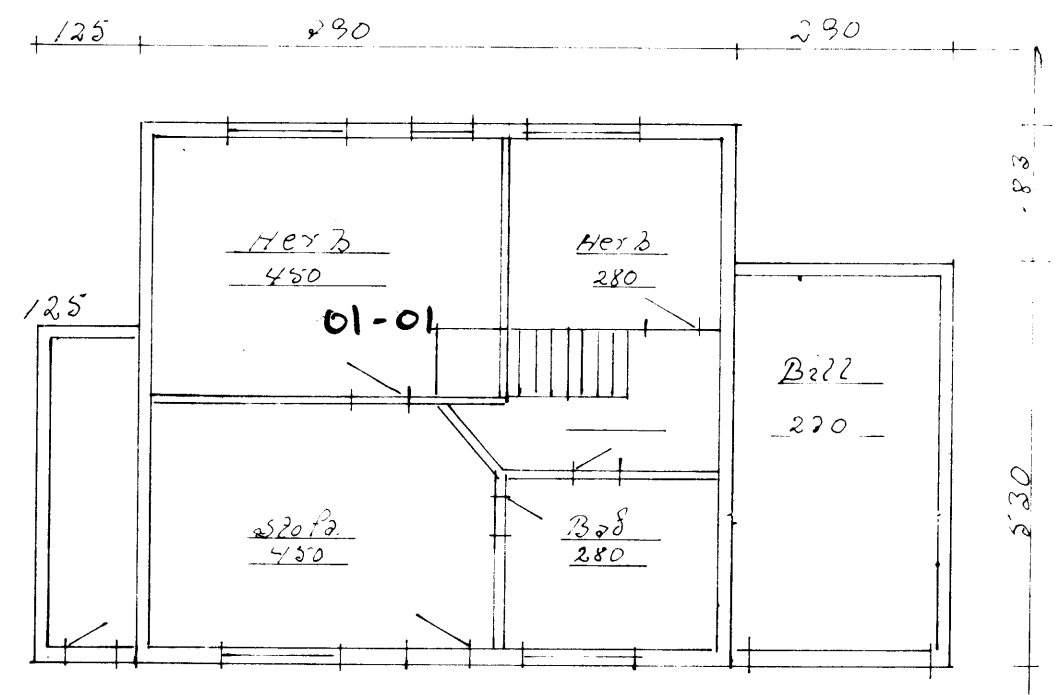
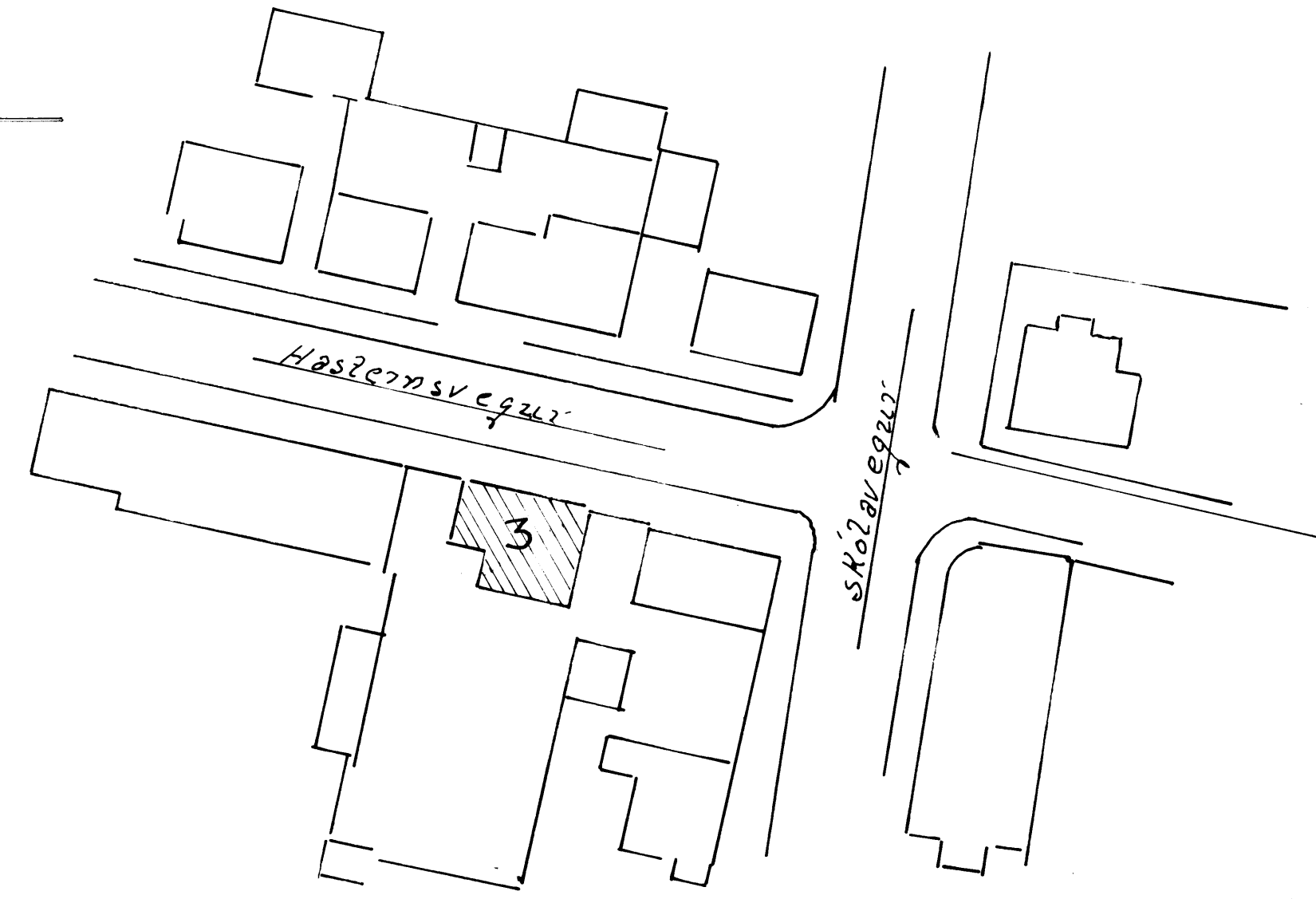
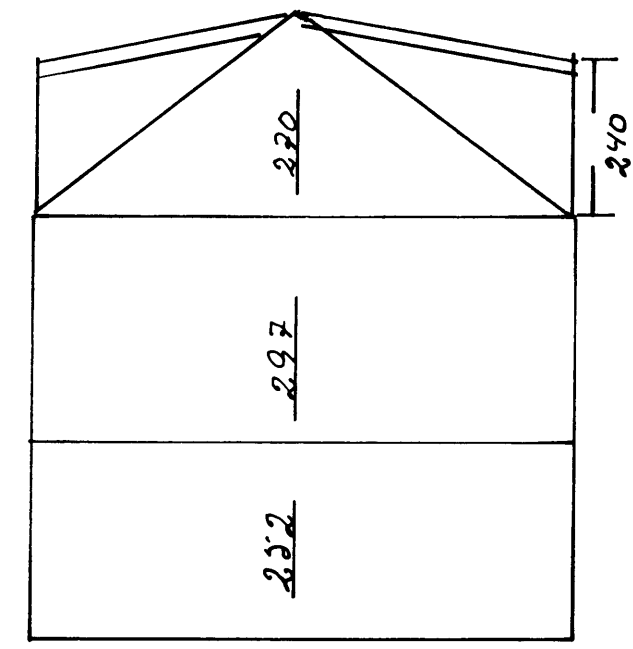
Austur

Vestur

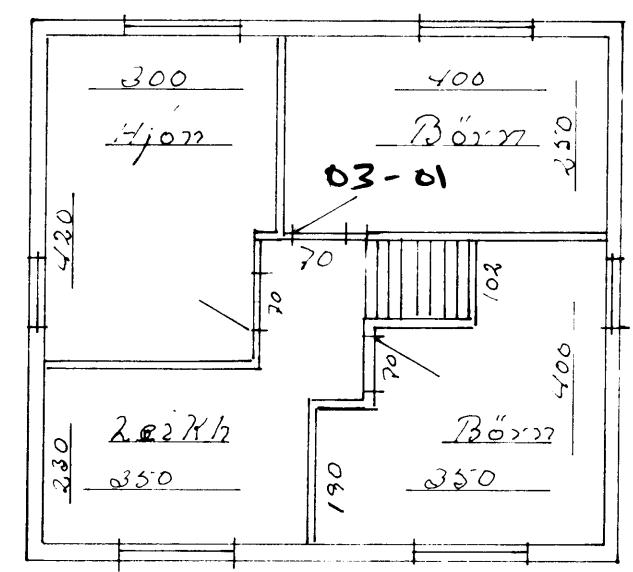
|        |                       |                      |       |
|--------|-----------------------|----------------------|-------|
| 1. hæð | 77,32 m <sup>2</sup>  | 194,9 m <sup>3</sup> | Brúhö |
| 2. hæð | 71,70 m <sup>2</sup>  | 212,9 m <sup>3</sup> | Brúhö |
| Ris    | 53,47 m <sup>2</sup>  | 127,8 m <sup>3</sup> | Brúhö |
|        | 202,49 m <sup>2</sup> | 535,6 m <sup>3</sup> | Brúhö |



1. hæð



2. hæð



Ris

Ö mál endurskoðist á staðnum.

|                        |                                |
|------------------------|--------------------------------|
| Hasleinsvegur 3. V. m. |                                |
| MKV                    | Þrúlingaþaki Kvistur           |
| 1:100                  | Drummunyngi útlit og skurð MKV |
|                        | skurðir m hæðar 2. hæð         |
| 1:500                  | Staðarmynd                     |
| Dags                   | 6.6.1996                       |
| Teiknað                | Valgeir Jónsson                |
| Teikn                  | m.a. /                         |