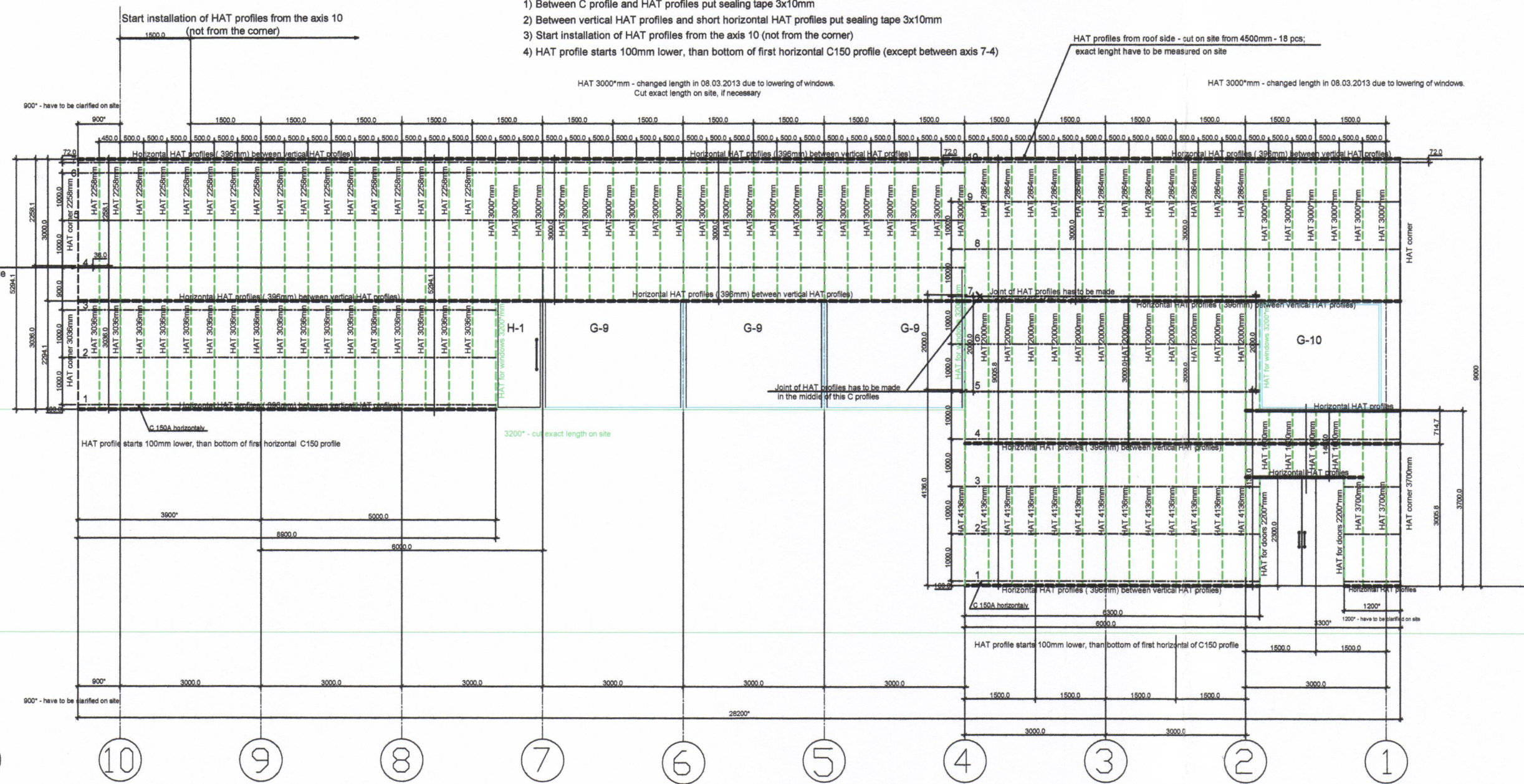


Lava Museum
HAT profiles layout
Outside wall
Facade 10-1

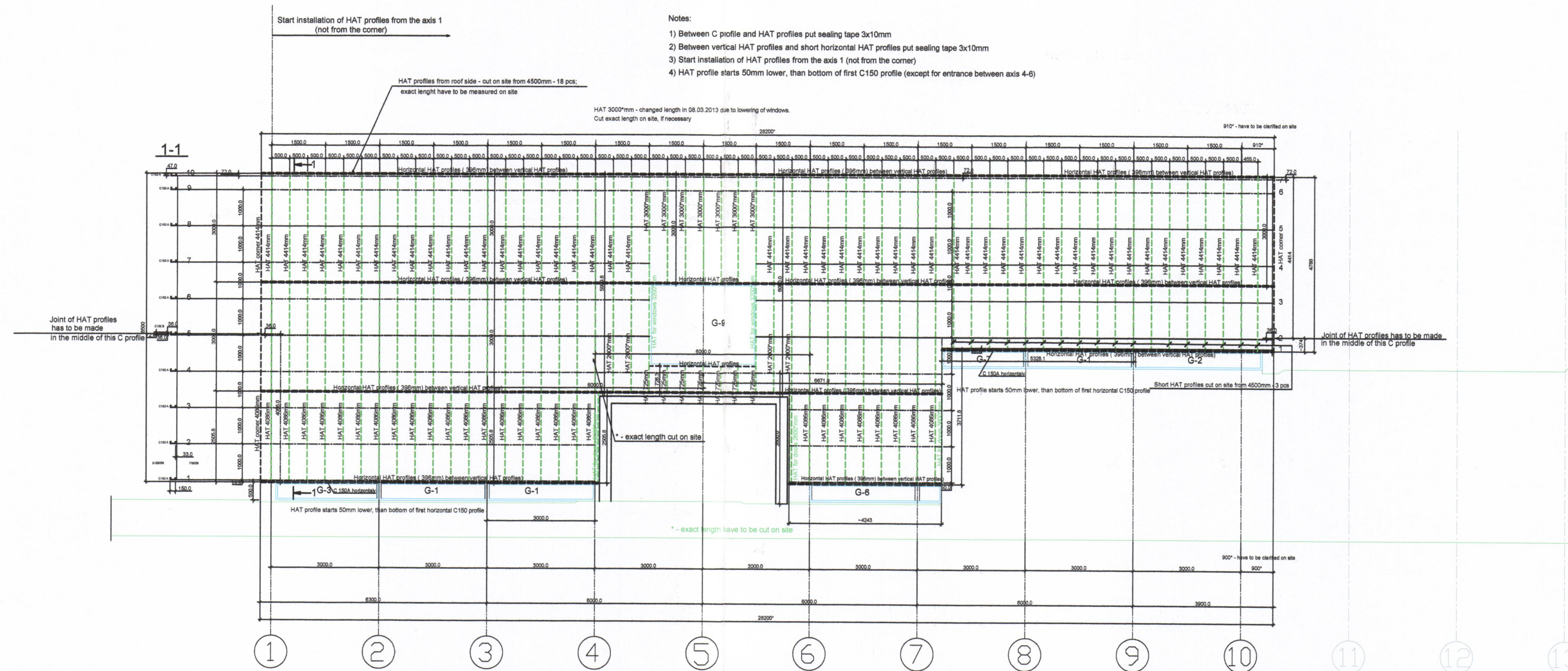
- Notes:
- 1) Between C profile and HAT profiles put sealing tape 3x10mm
 - 2) Between vertical HAT profiles and short horizontal HAT profiles put sealing tape 3x10mm
 - 3) Start installation of HAT profiles from the axis 10 (not from the corner)
 - 4) HAT profile starts 100mm lower, than bottom of first horizontal C150 profile (except between axis 7-4)



norðurhlið

Lava Museum
HAT profiles layout
Outside wall
Facade 1-10

- Notes:
- 1) Between C profile and HAT profiles put sealing tape 3x10mm
 - 2) Between vertical HAT profiles and short horizontal HAT profiles put sealing tape 3x10mm
 - 3) Start installation of HAT profiles from the axis 1 (not from the corner)
 - 4) HAT profile starts 50mm lower, than bottom of first C150 profile (except for entrance between axis 4-6)



suðurhlið

SAMÞYKKT AF BYGGINGARFULLTRÚA
21 MAÍ 2013
Sigrún S. Björnsdóttir
BYGGINGARFULLTRÚA VESTMANNNAEYJUM

UNDIRRITUN SAMRÆMINGARHÖNNUNAR
Þýðingun Þýðingunsson
270963-5449

mkg Margrét Kristín Gunnarsdóttir
arkitekt MAA
Strandgata 81
220 Hafnarfjörður
netfang: maggastina.gunna@hotmail.com
sími: 841-8868

tpz Kirkjuvegi 23 900
Vestmannaeyjum
Sími 481-2711
teknistofa tpz@teknistofa.is
www.teknistofa.is

VERKÍS

www.verkis.is - sími: +354 422 8000

Þýðingun Þýðingunsson
270963-5449

ÚTG. DAGS 09.04.2013	HANNAÐ MKG	MÆLIKVARÐI 1:100
YFIRFARIÐ PZ	TEIKNAD S.B.C/EA	

ELDHEIMAR
GOSMYNJASAFN
ÚTANHÚSKLÆÐNING/LEKTUR
ÚTLIT
NORÐUR-SUÐUR

0436-2 250