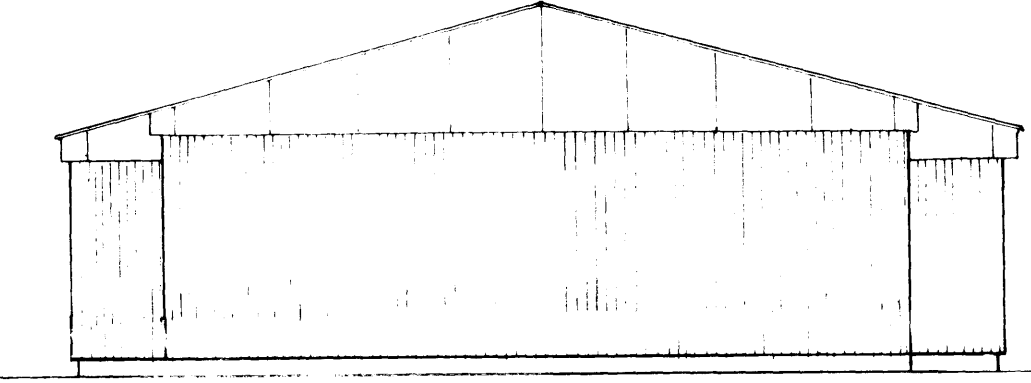
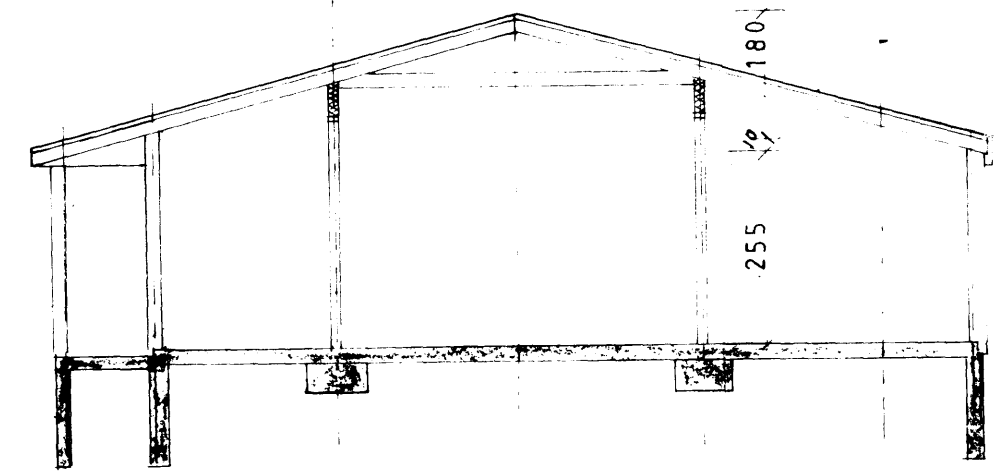
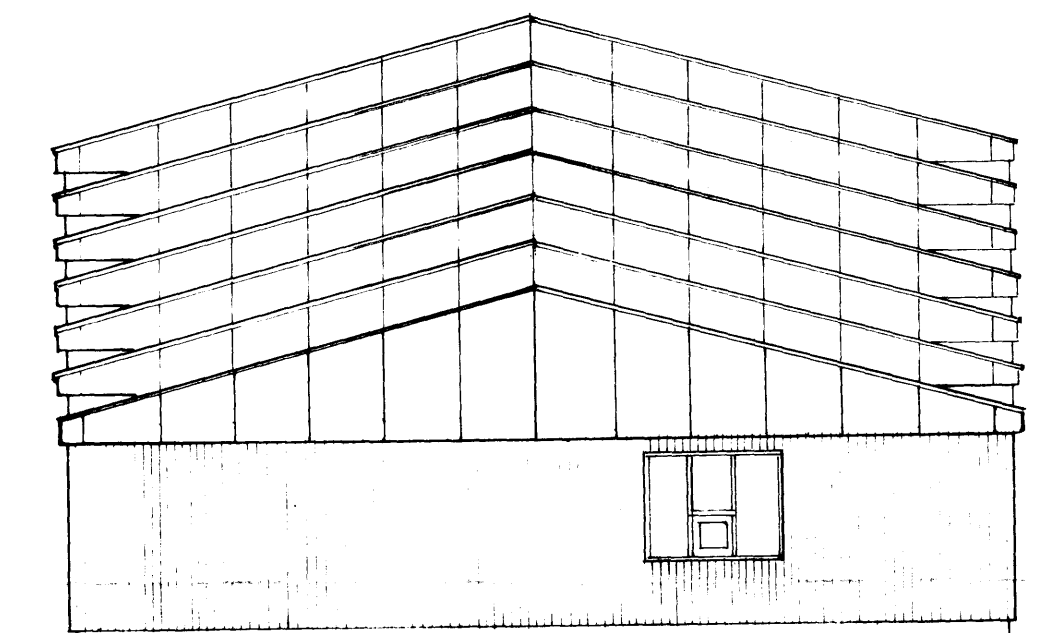


VESTURHLÍÐ

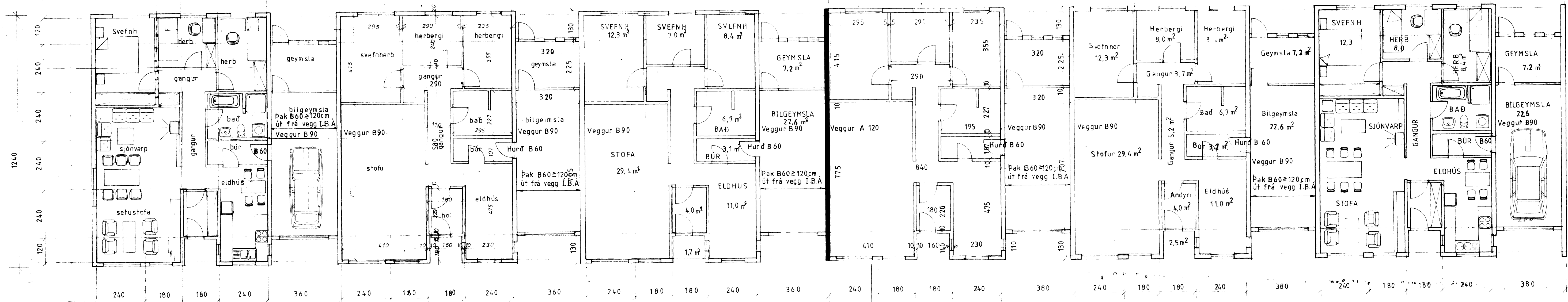
GRUNNFLÖTUR ÍBÚÐA'HÚS 101,36 m<sup>2</sup> x 6 = 608,16 m<sup>2</sup> NETTÓ  
 GRUNNFLÖTUR ÍBÚÐA HUS 107,36 m<sup>2</sup> x 6 = 644,16 m<sup>2</sup> BRÚTTÓ  
 GRUNNFLÖTUR BILGEYMSLA 32,0 m<sup>2</sup> BRÚTTÓ  
 GRUNNFLÖTUR 31,1 m<sup>2</sup> NETTÓ  
 RÚMMAL ÍBÚÐA'HÚS = 359,3 m<sup>3</sup>  
 RÚMMAL BILGEYMSLU = 117,8 m<sup>3</sup>  
 RÚMMAL ALLS = 477,1 m<sup>3</sup>



SUÐUR



NORÐUR



Íbúð-A

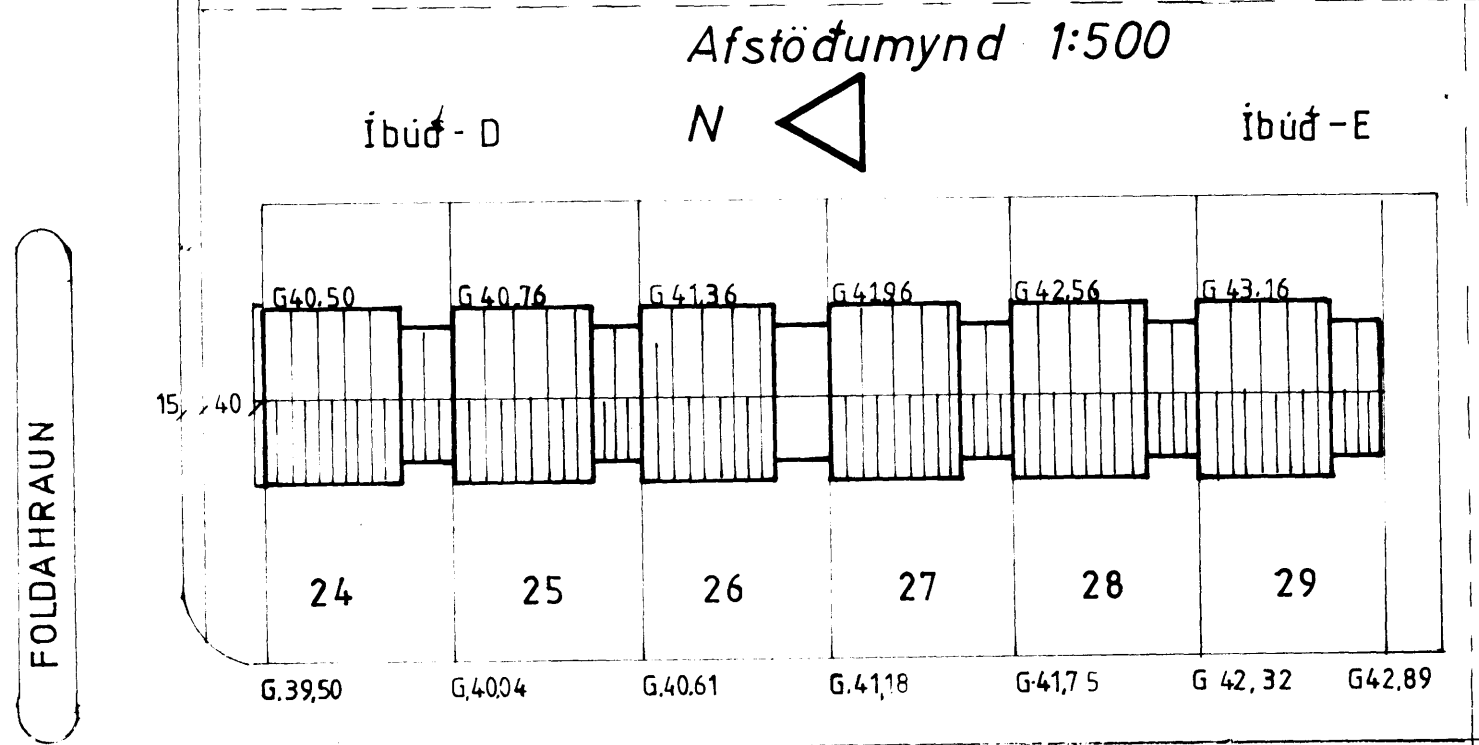
Íbúð-B

Íbúð-C

Íbúð-F

GRUNNMYND 1:100

SKÝRINGAR  
 KLÆDNING Á B 90 VEGG SKAL VERA Í FLOKK 1  
 SAMKVAMT BRUNAMÁLAREGLUGERÐ.  
 EINANGRA SKAL VEGGI MED 6" STEINULL  
 A.M.K. 40KG Á M<sup>2</sup>



FÖLDAHRAUN

VERK Raðhús Földahraun 24-29	
Grunnmynd og útlit	
BR	DAGS
BREYTINGUM	TEIKN NR.1
PALL ZÓPHONIASSON	AF 8434
Byggingatæknifræðingur	HANNAB P.Z
Kirkjuvegi 23 s.98-2711	TEIKNAB Diddi
900 Vestmannaeyjum	DAGS JUNI 1984

SAMÞYKKT 1/8 1984  
 SBR-BRÉF DAGS 10  
 SBR-SF 9.4.2  
 SBR-ALDÓ SBR-KAFA 3  
 BRUNAMÁLASTOFNUN RÍKSINS  
 Væðing