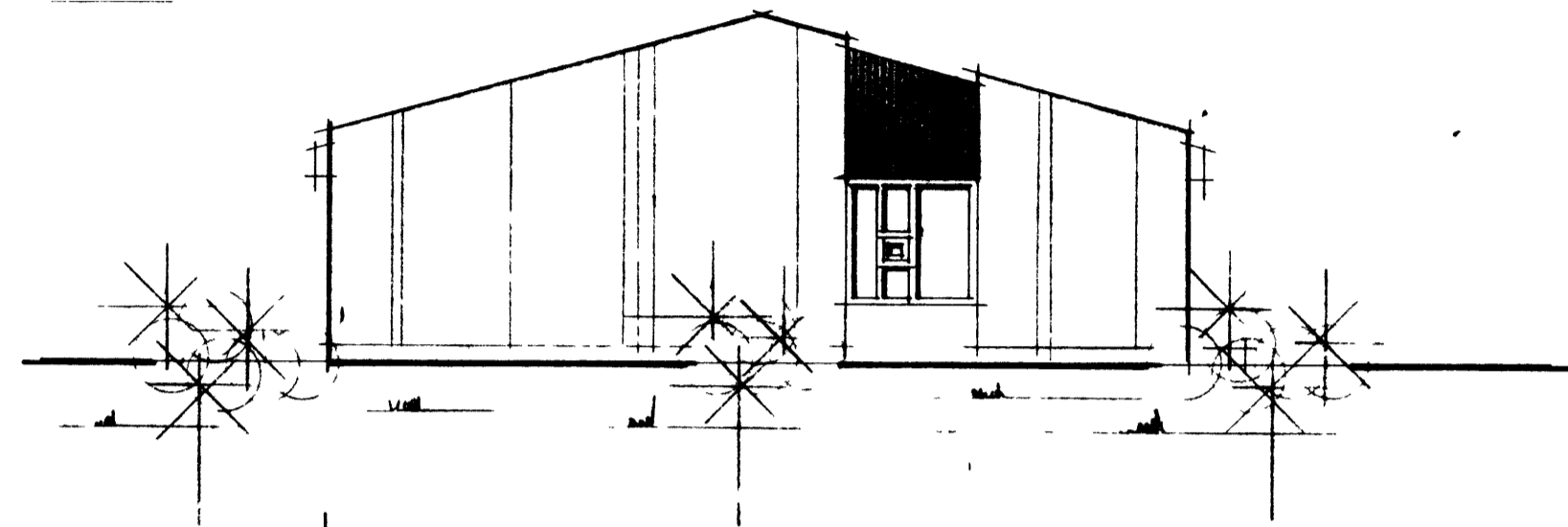
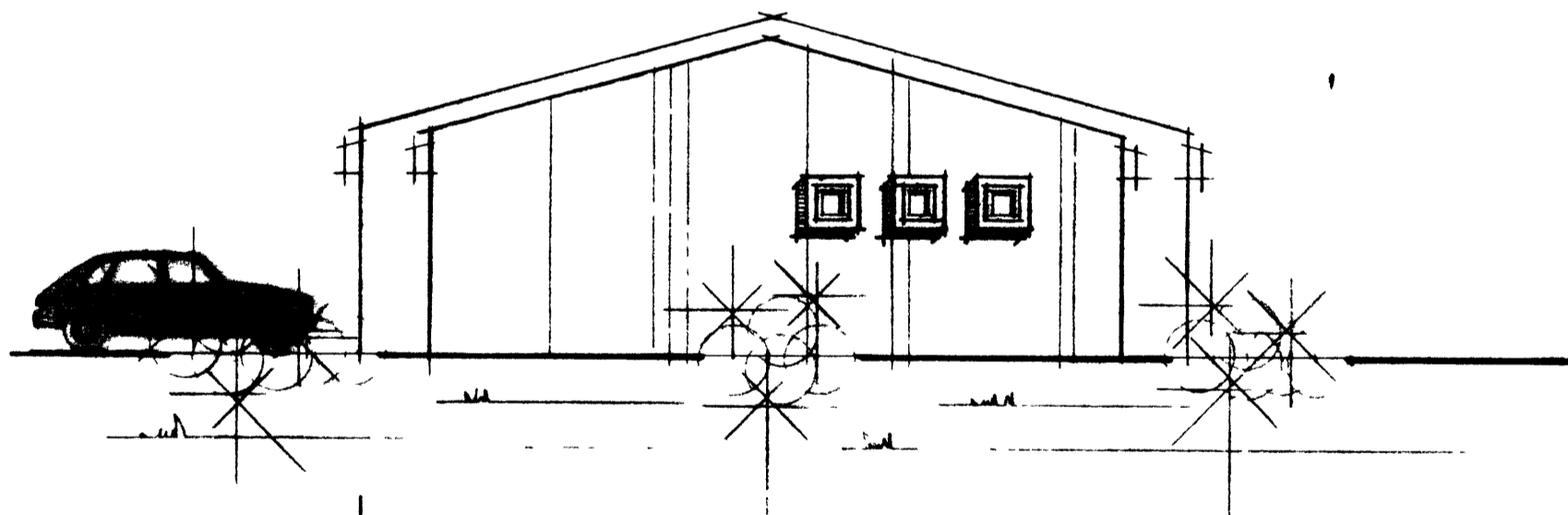


FOLDAHRAUN 24-29 VESTMANNAEYJUM

15-8-80
 BYGGINGARLITUR
Jóhann Þórunn



NORÐUR

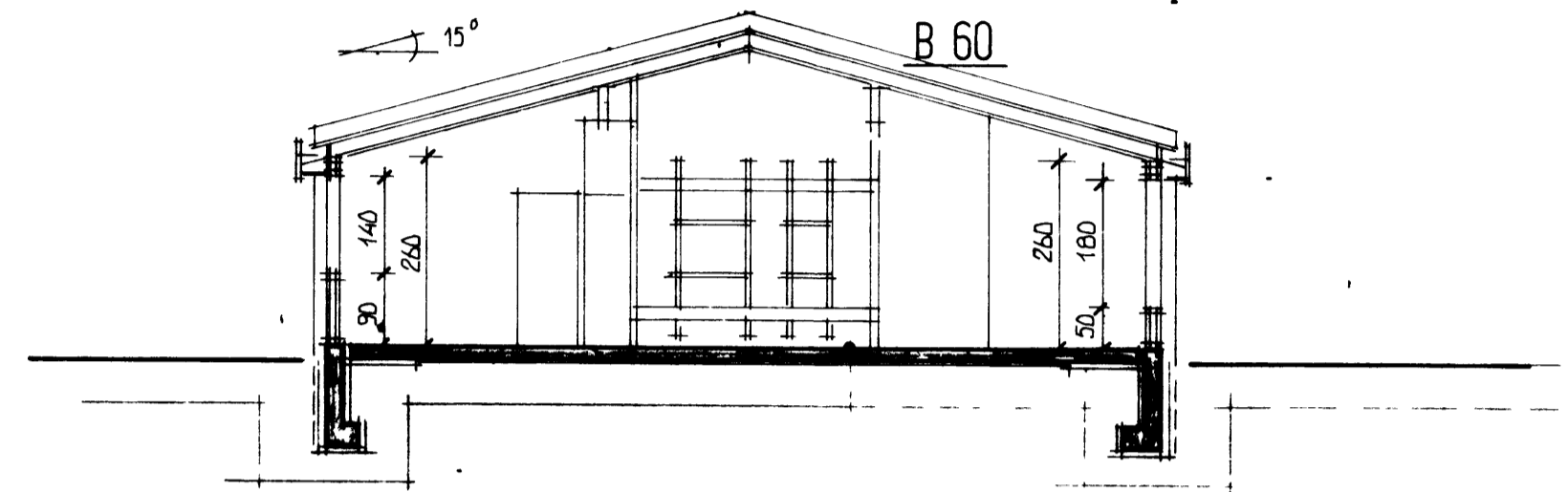


SUÐUR

FLATARMÁL HÚSS	102 08 M ²
FLATARMÁL BÍLG	31 16 M ²
SAMANL. FLATARM. HÚSS+BÍLG	133 24 M ²
RÚMMAL HÚSS+BÍLG	474 00 M ³
HEILDARFL. HÚSA NR 24-29	799 44 M ²
NÝTINGARHLUT FALL	0 35
LR MERKIR LOFTRÁS	125 MM

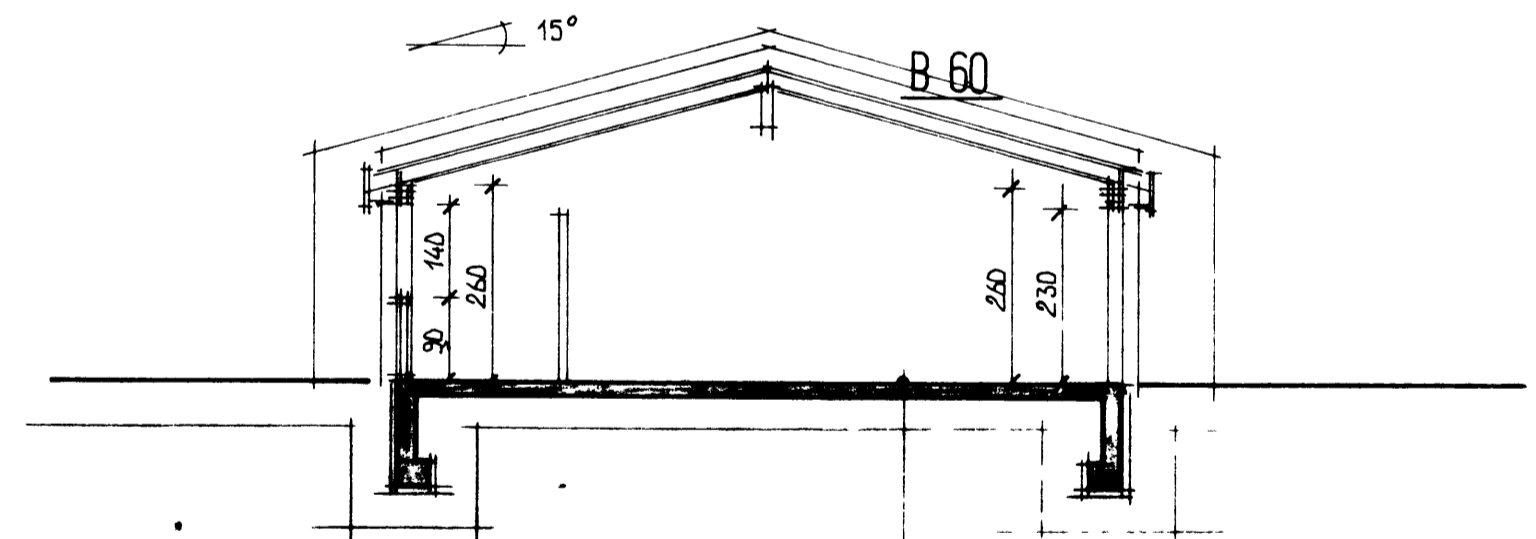
KÖLNUNARTÓLUR K Á HITAVEITUSVÆÐI

ÞAK	0 30 W/M ² C ⁰
GOLF	0 40 W/M ² C ⁰
UTVEGGIR	1 00 W/M ² C ⁰ VEGID MEDALTAL



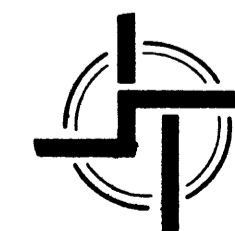
SNEIÐING Í HÚSI

GH Í HÚSI NR 24	= 40 50
NR 25	= 41 00
NR 26	= 41 50
NR 27	= 42 00
NR 28	= 42 50
NR 29	= 43 00



SNEIÐING Í BILGEYMSLU

GH Í HÚSI NR 24	= 40 50
NR 25	= 41 00
NR 26	= 41 50
NR 27	= 42 00
NR 28	= 42 50
NR 29	= 43 00



STAÐALHÚS

TEIKNISTOFA SÍÐUMÚLA 31 SÍMI 83141

VERKEFNI	DAGS. AGÚST 1980	VERK NR R 20
ÚTLITSMYNDIR OG SNEIÐINGAR	MKV. 1 100	
FOLDAHRAUN 24-29 VESTMANNAEYJUM	BR.	BLAD NR 102

Jóhann Þórunn *Staðalhus*