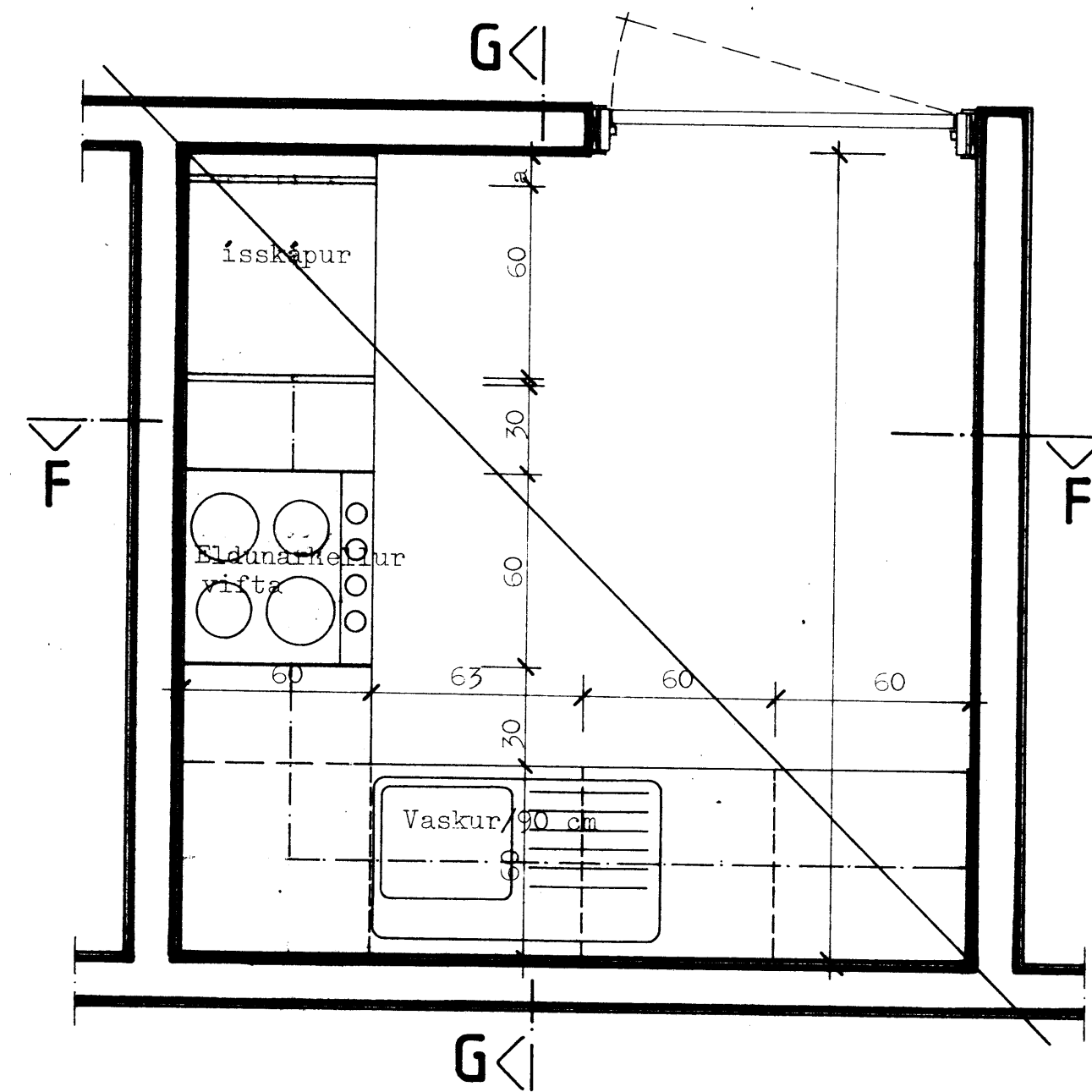
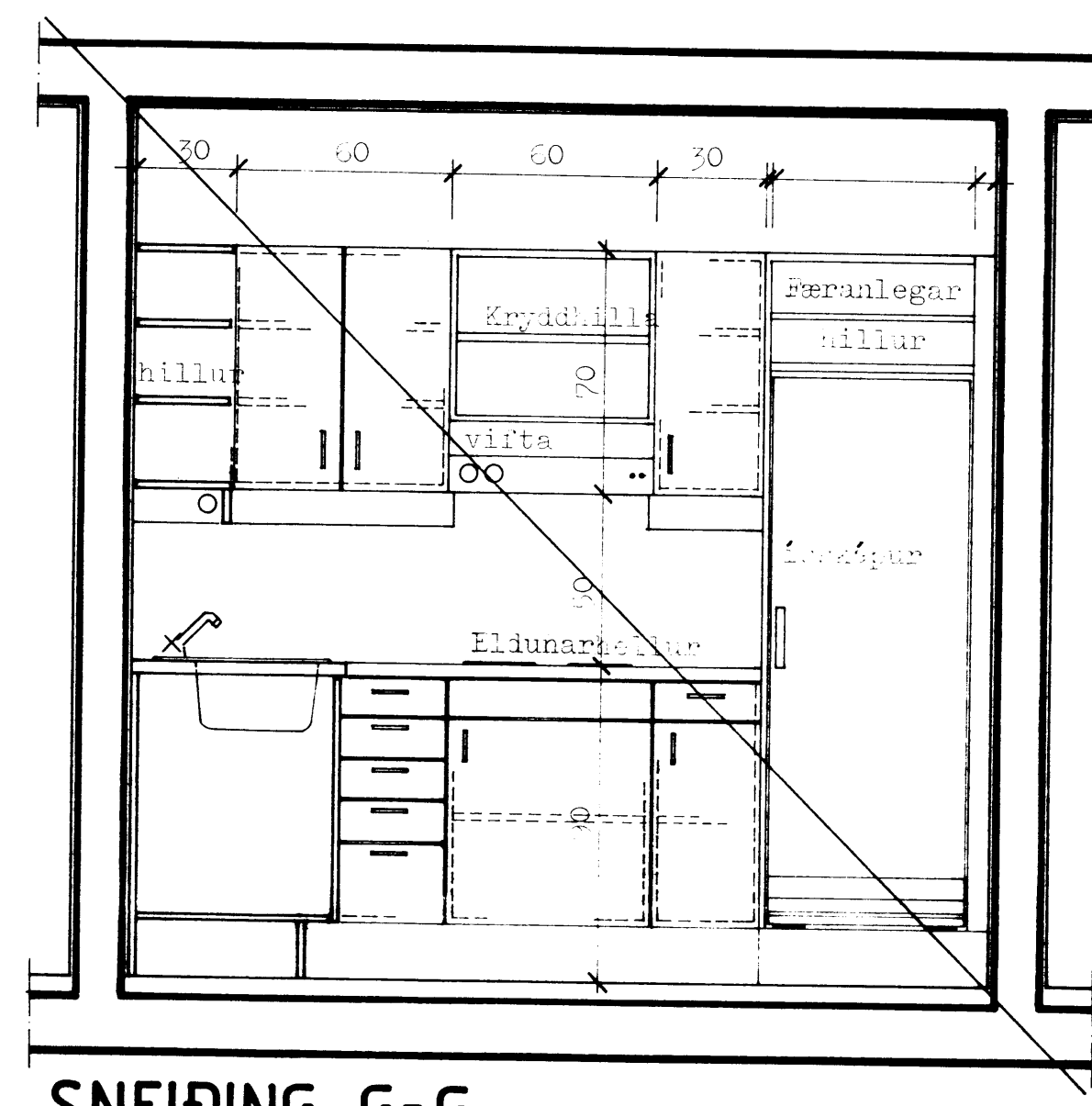


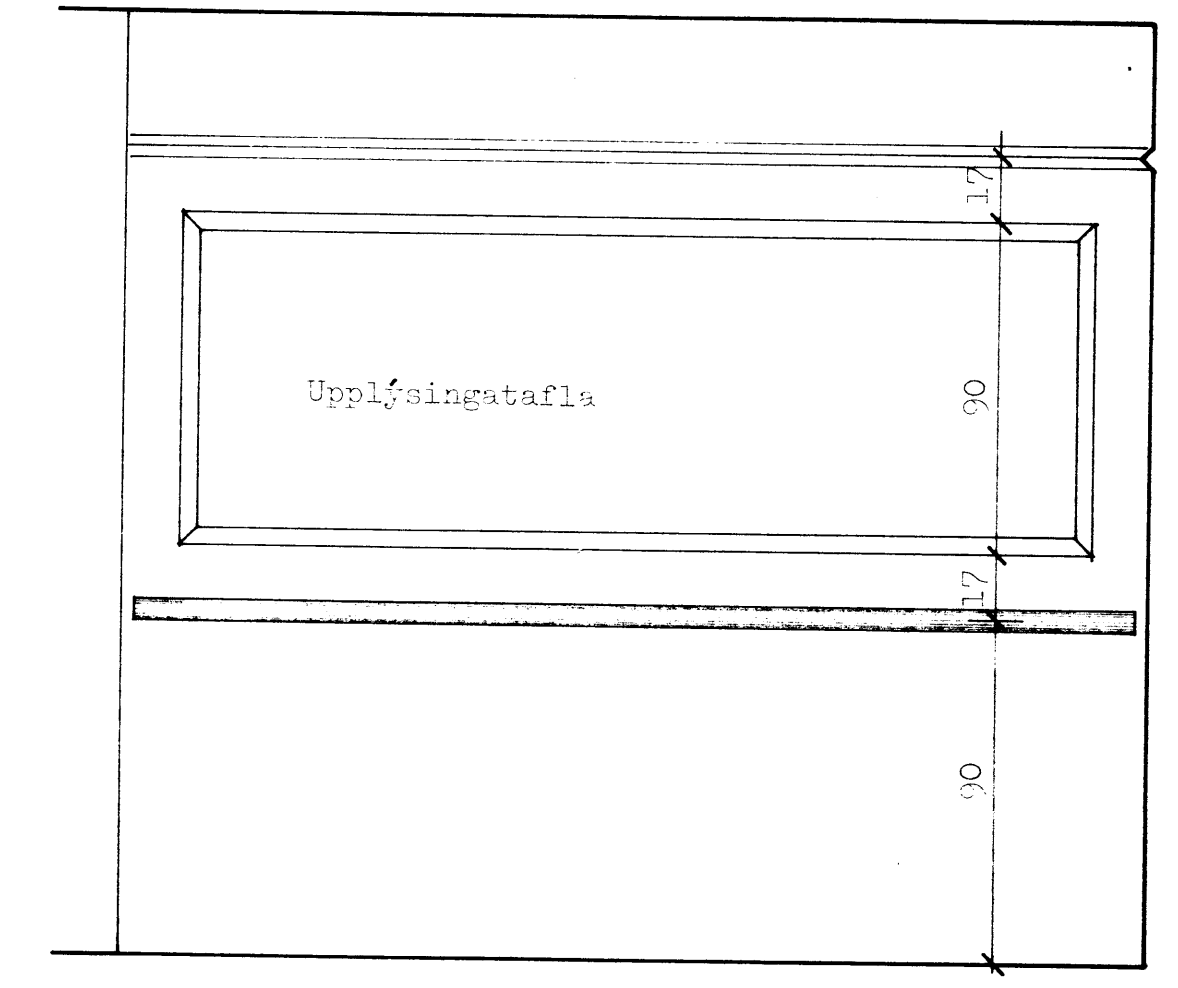
SNEIÐING F-F



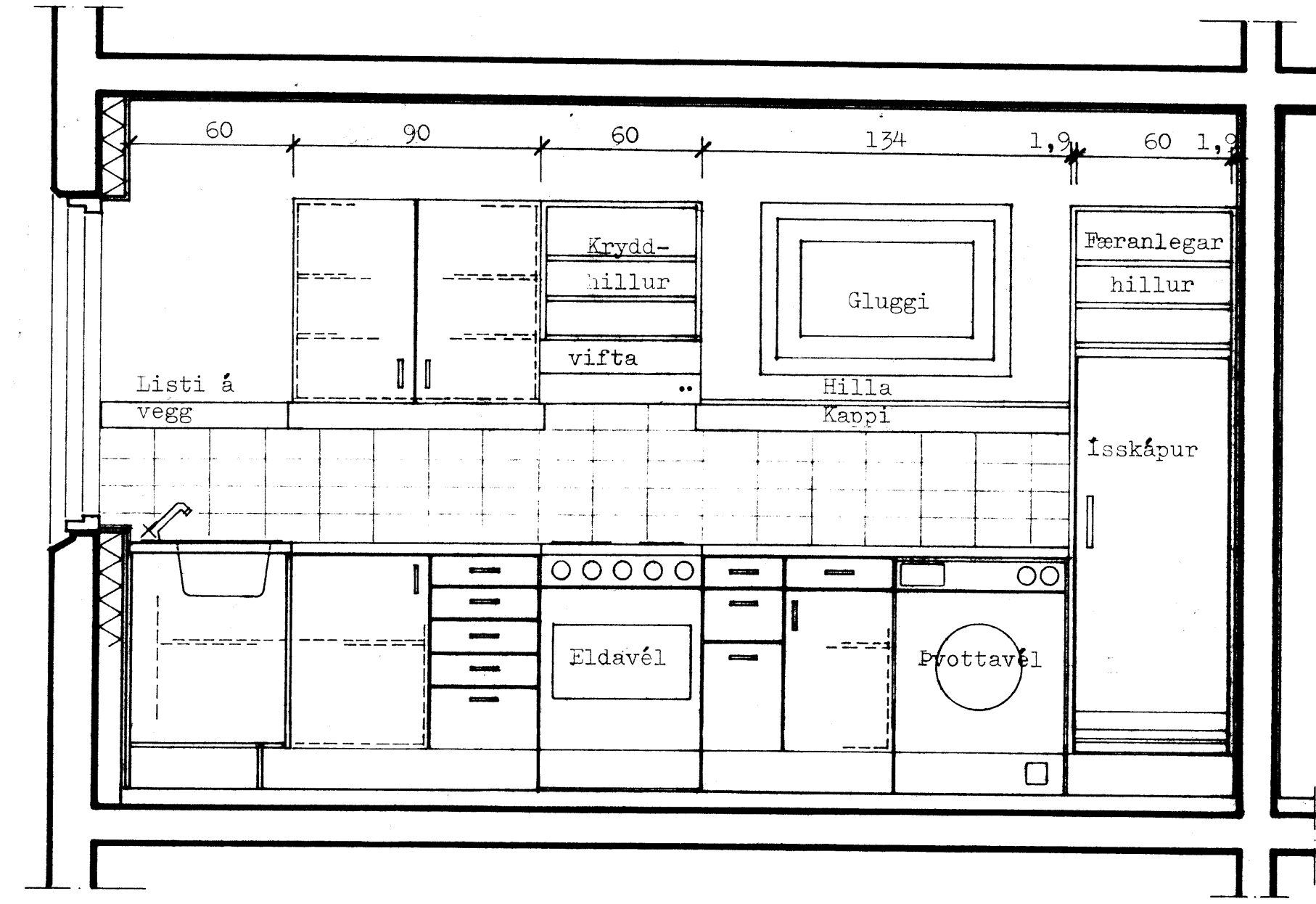
G-G



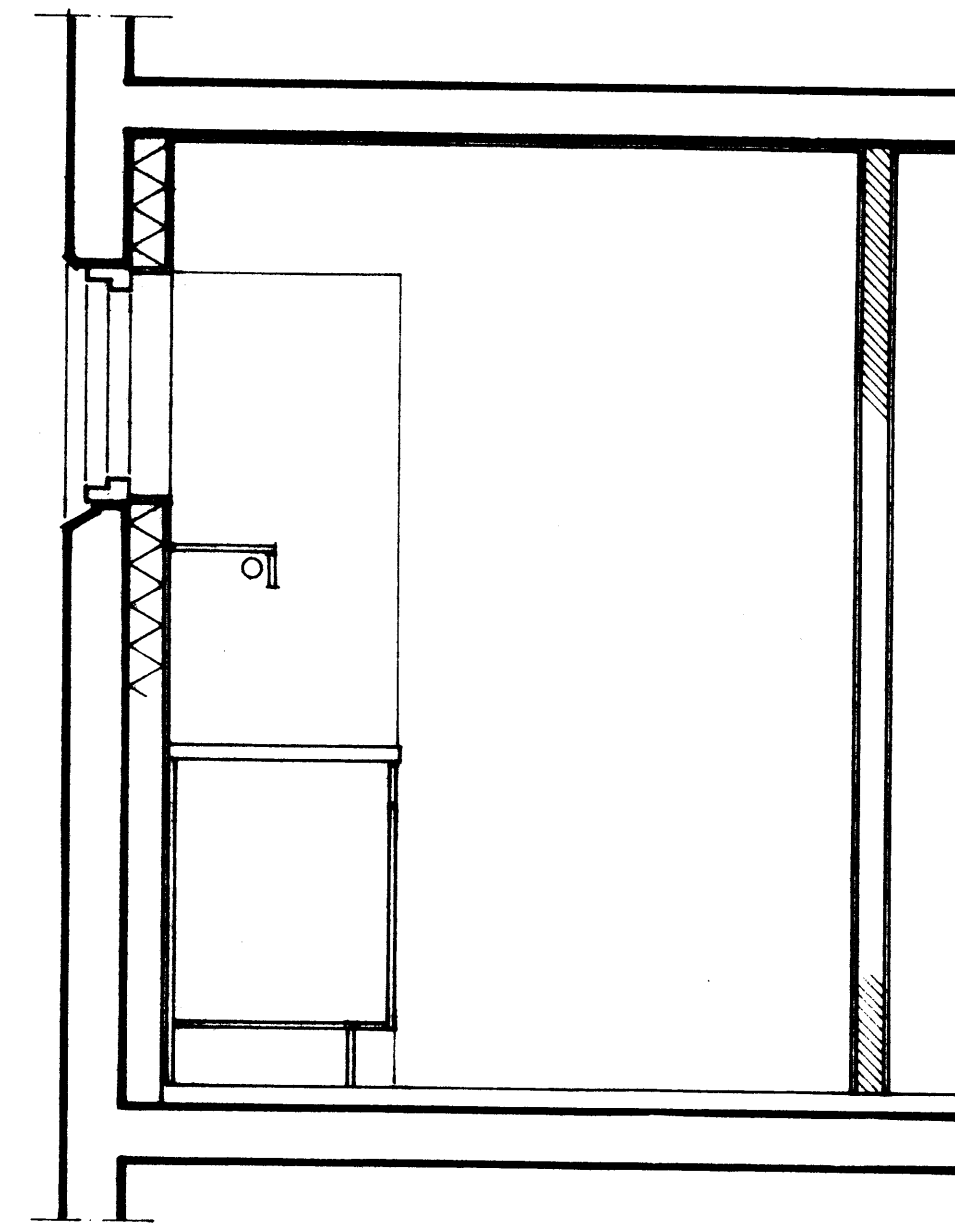
SNEIÐING G-G



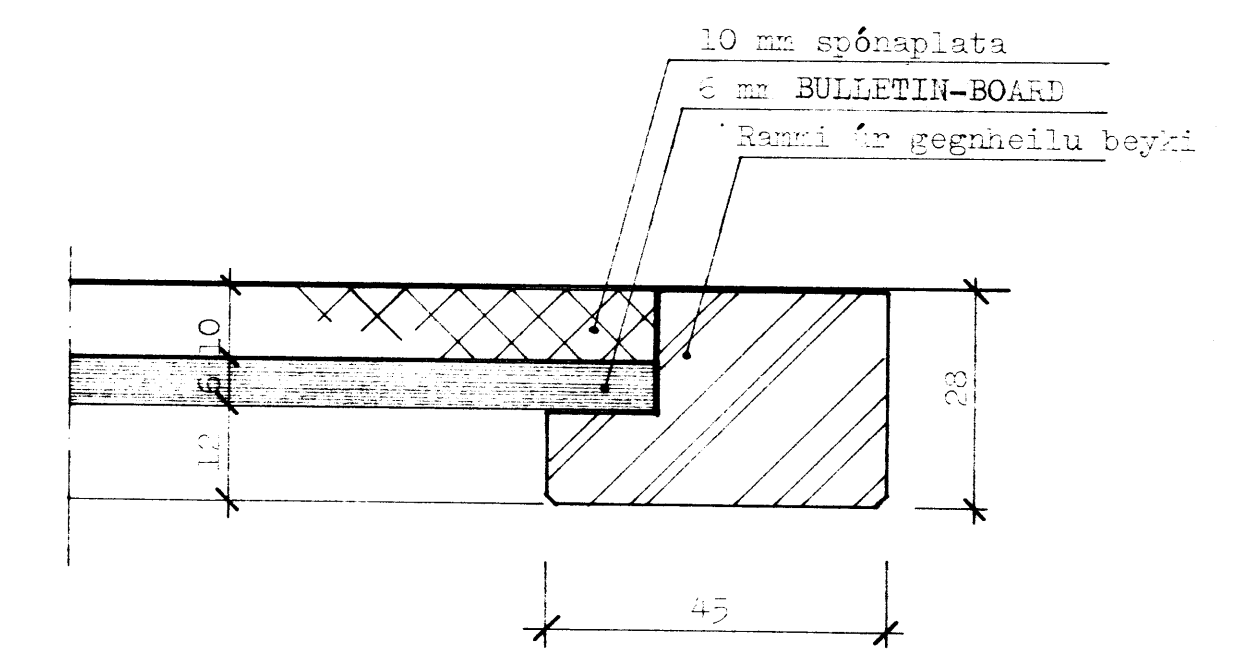
SNÍÐ J-J



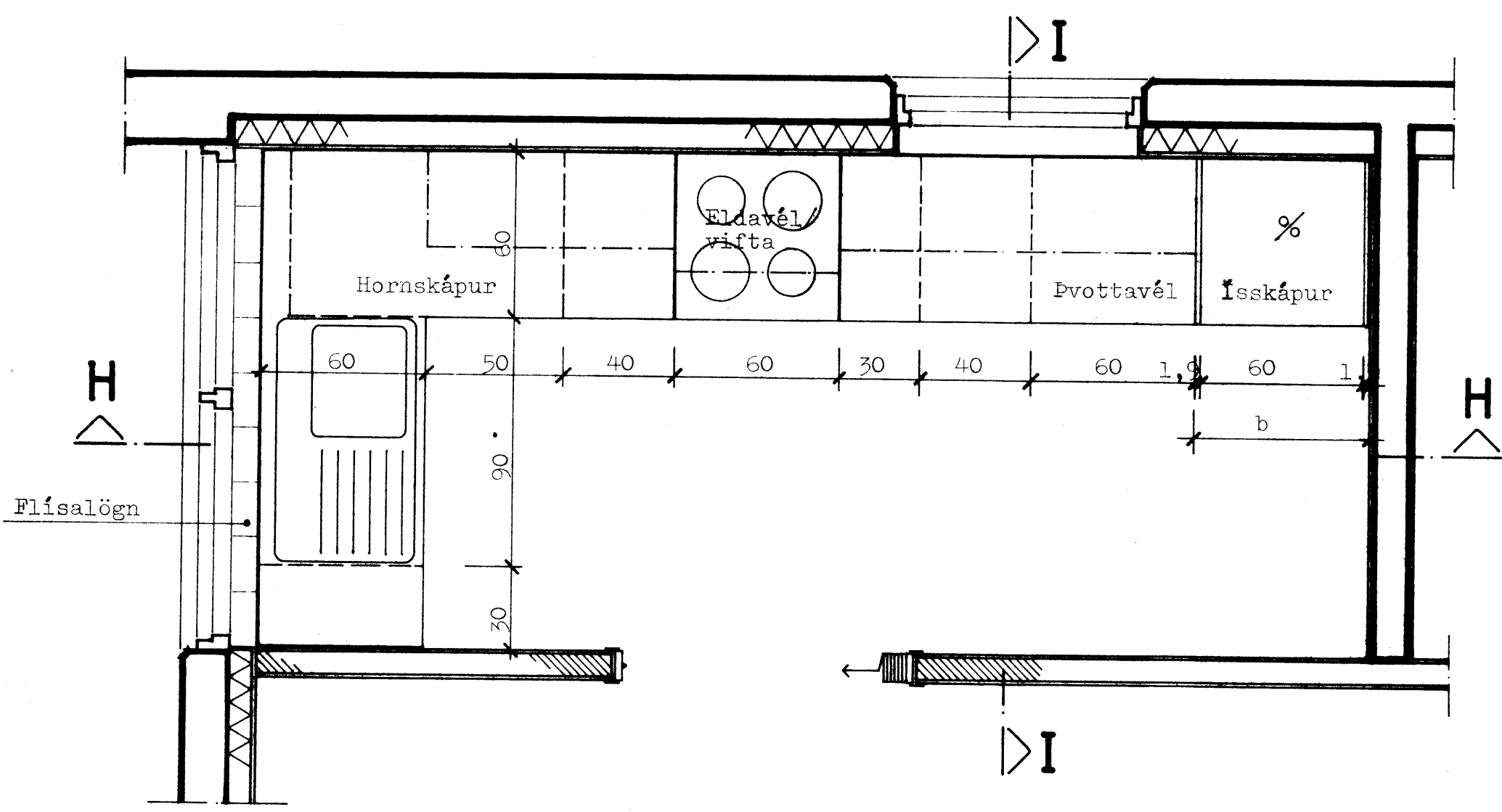
SNEIÐING H-H



SNEIÐING I-I



HOFL, sneiðing



I-I

ÁTÍÐ: Öll mál skulu tekin á staðnum áður en smíði hefst.

TEIKNISTOFA		IBÓÐIR ALDRADRA við Hraunbóðir VEY	
GYLFI GUDJÓNSSON		2. áfangi	
ARKITEKT FAI DSA		INNRÉTTINGATEIKNING	
SKÓLAVORÐUSTÍG 3. XI REYKJAVÍK SIM 2840		Eldhúsi, útlit, sneiðingar og grunnmyndir.	
		Upplýsingatafla	
MAKNAÐ	TEKNAÐ	REYKJAVÍK	1985.10.13
KVAFRÐI	1:20, 1:1	BREYTT	
		VERK 84-212	
		BLAD 513	