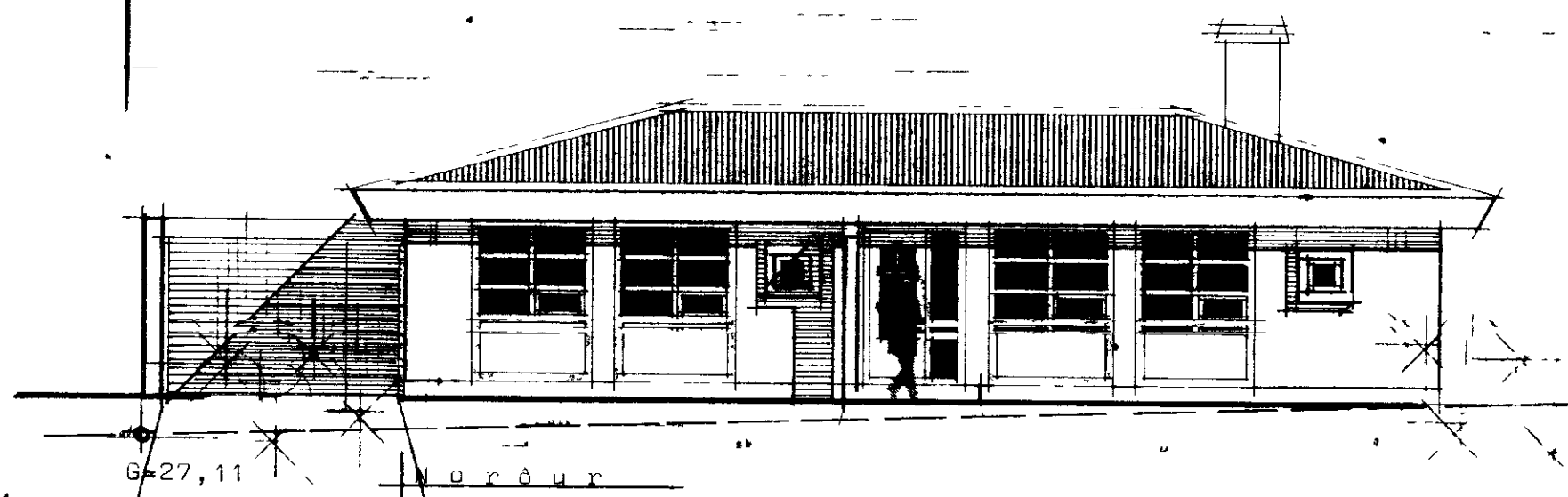


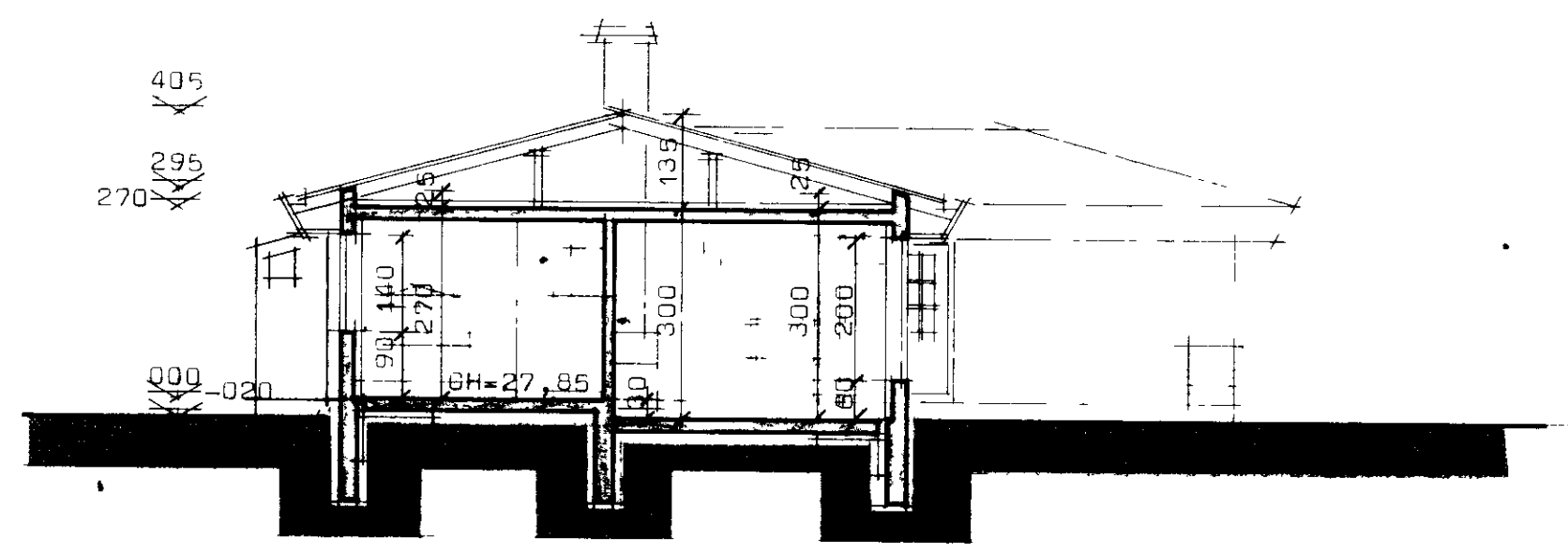
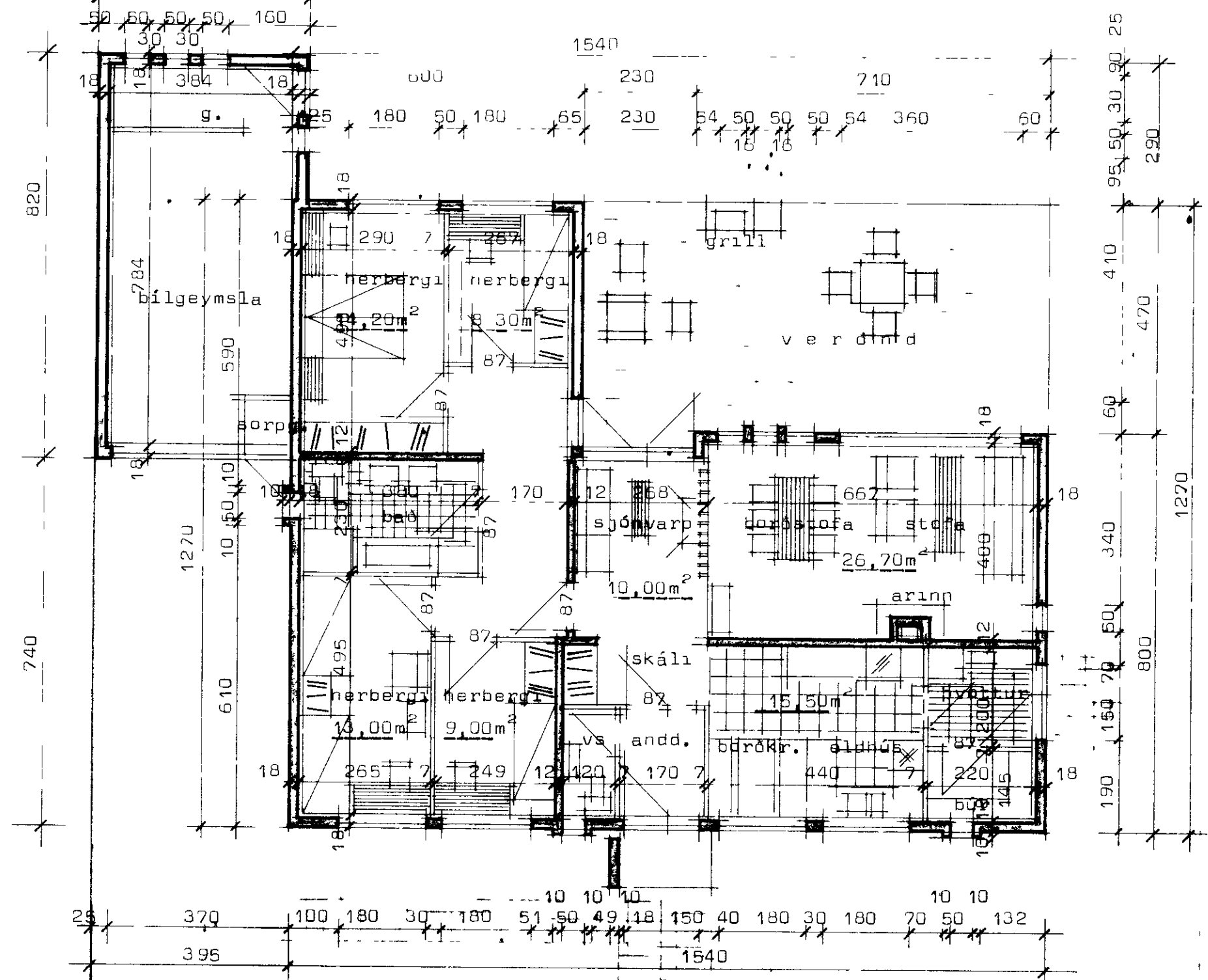
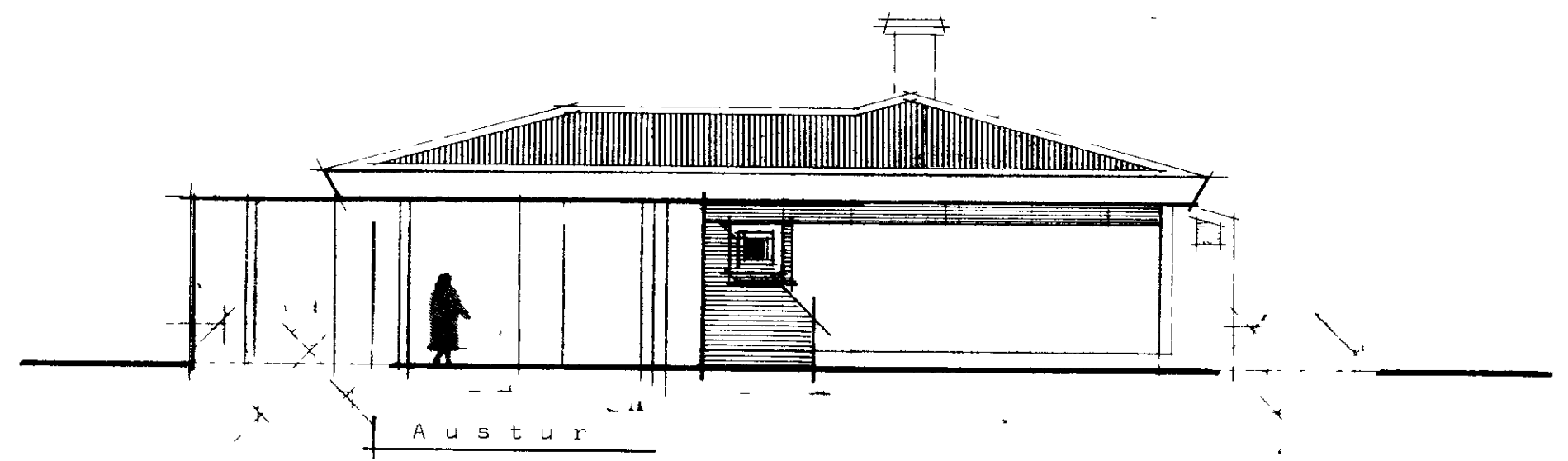
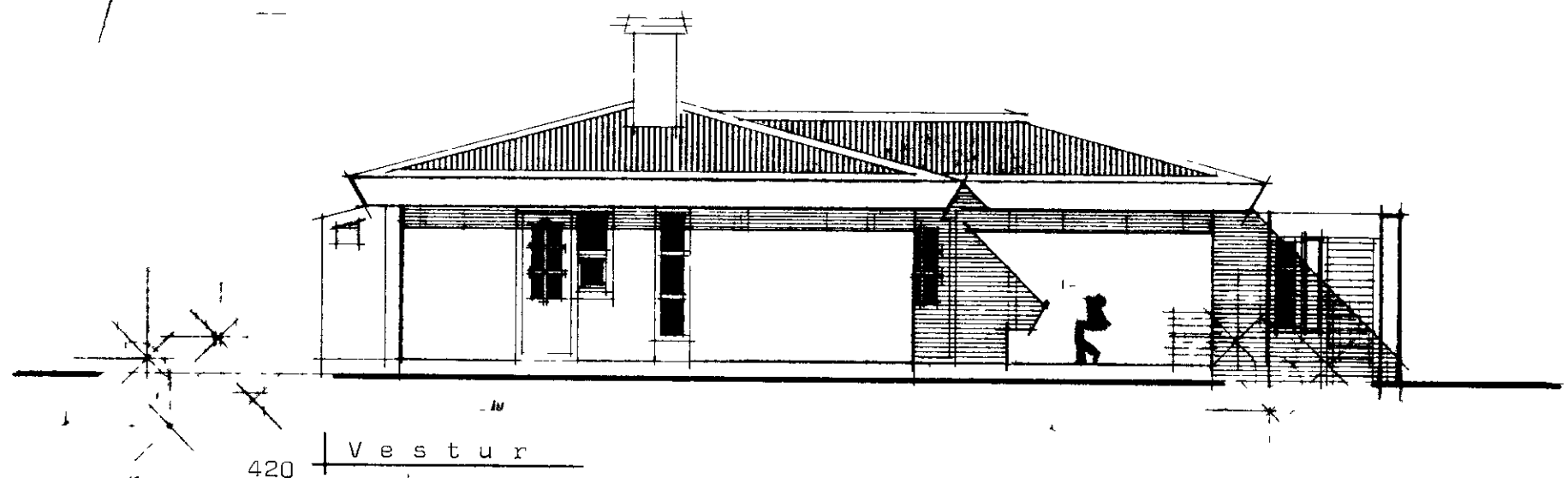
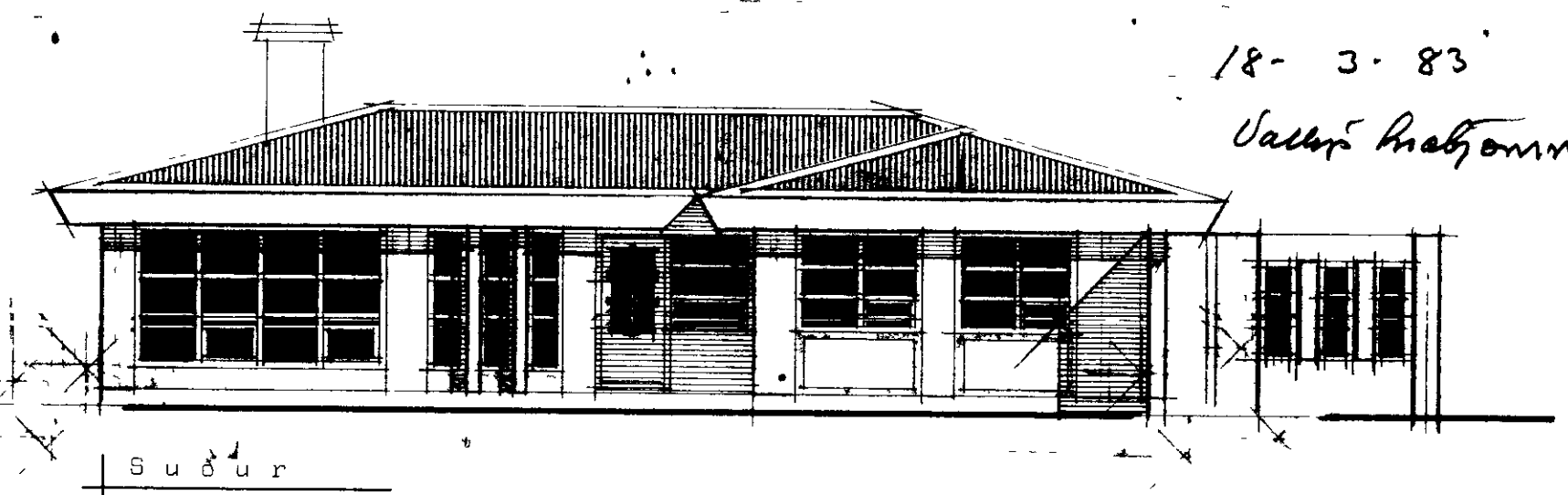
# BÚHAMAR 84 VESTMANNAEYJUM

1836

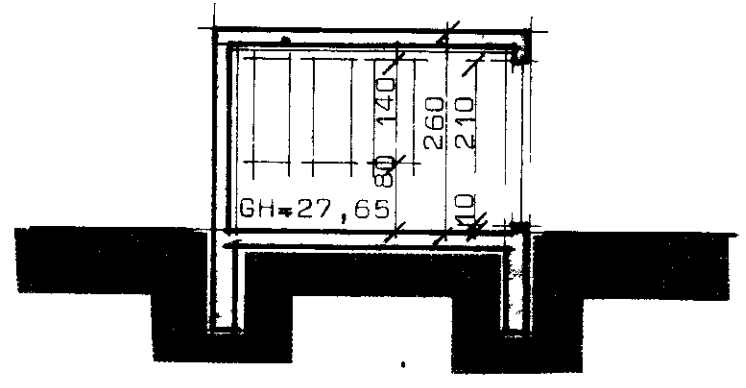
18-3-83  
Valdís Kristjánsson



G=27,11



Sneiðing í hús



Sneiðing í bilg.

Flatarmál húss	150,70 m <sup>2</sup>
Flatarmál bílgeymslu	32,80 m <sup>2</sup>
Samanlagt flatarmál	183,50 m <sup>2</sup>
Rúmmál húss	525,00 m <sup>3</sup>
Rúmmál bílgeymslu	85,50 m <sup>3</sup>
Heildarrúmmál	610,50 m <sup>3</sup>
Nýtingarhlutfall	0,24
Ír merkir loftrás	Ø125 mm.

Ath Frágangur við arinn sé í samræmi við brunamálareglugerð.

**STADALHÚS** S T I  
TEIKNISTOFA SÍÐUMÚLA 3I SÍMI 8314I

VERKEFNI	DAGS.	1983	VERK NR
Grunnmynd, sneiðing, útlit og afst.	MKV	1 100	S 61
Búhamar 84 Vestmannaeyjum.	BR.		
	BLAD NR	1,01	

Kólnunartölur K utan hitaveittusvæða.  
pak ..... 0,20 w/m<sup>2</sup>°C  
Gólf ..... 0,30 w/m<sup>2</sup>°C  
Ótveggir ..... 0,00 w/m<sup>2</sup>°C vegið meðaltal.

Kólnunartölur K í hitaveittusvæði.  
pak ..... 0,30 w/m<sup>2</sup>°C  
Gólf ..... 0,40 w/m<sup>2</sup>°C  
Ótveggir ..... 1,00 w/m<sup>2</sup>°C vegið meðaltal.