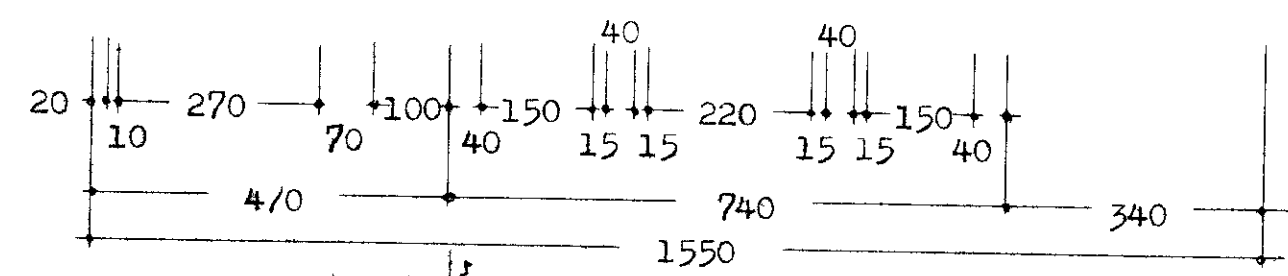
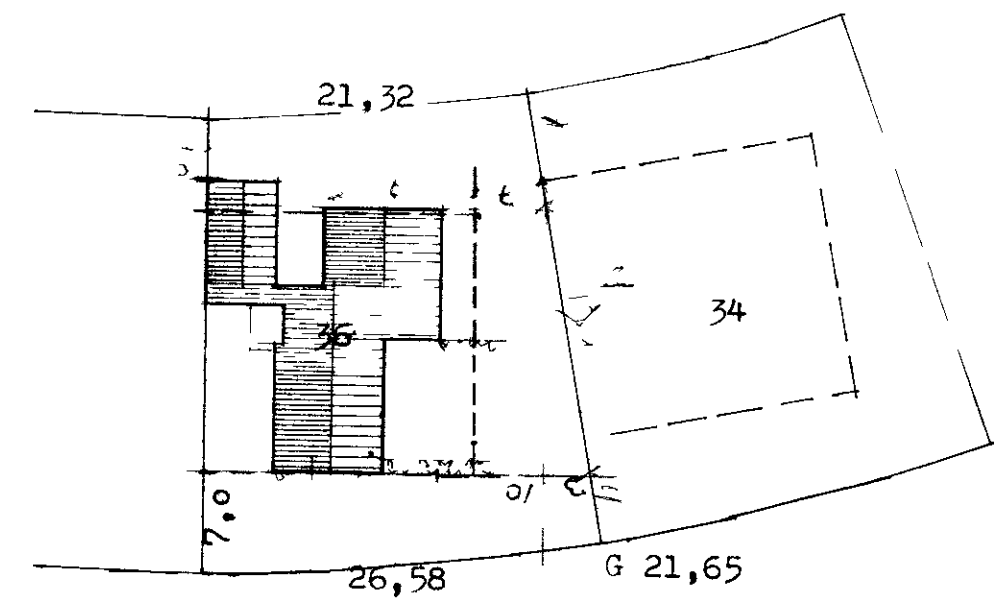
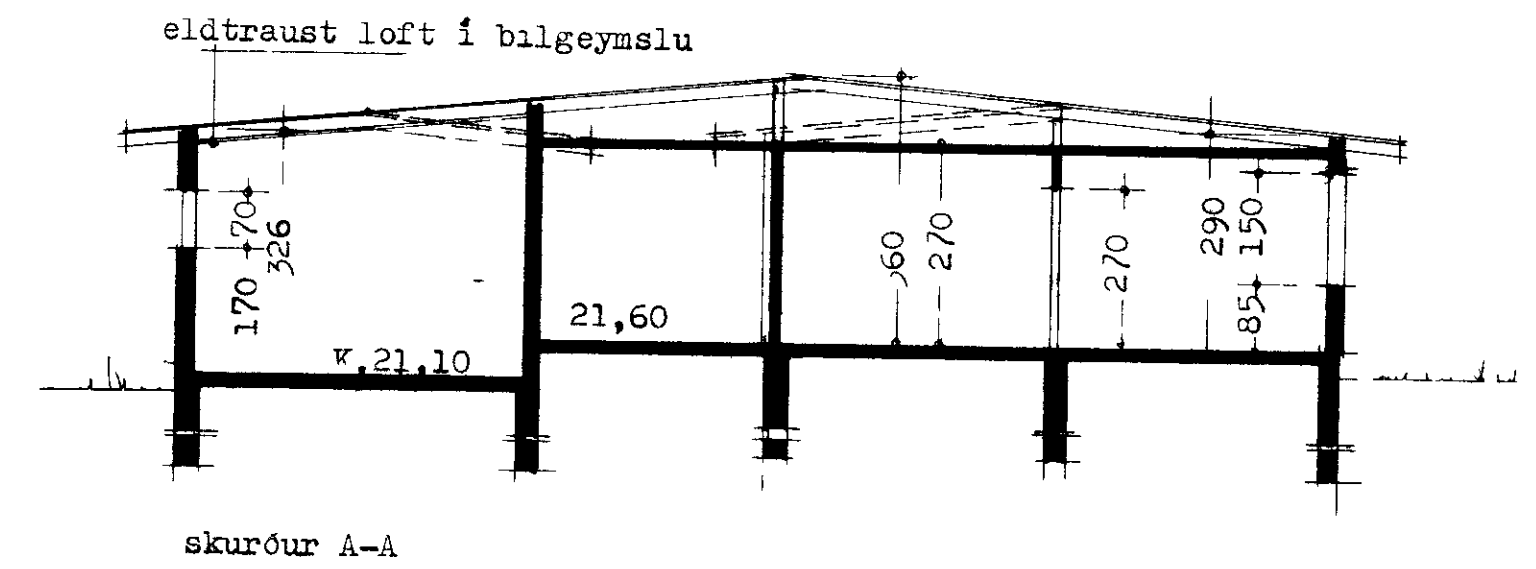
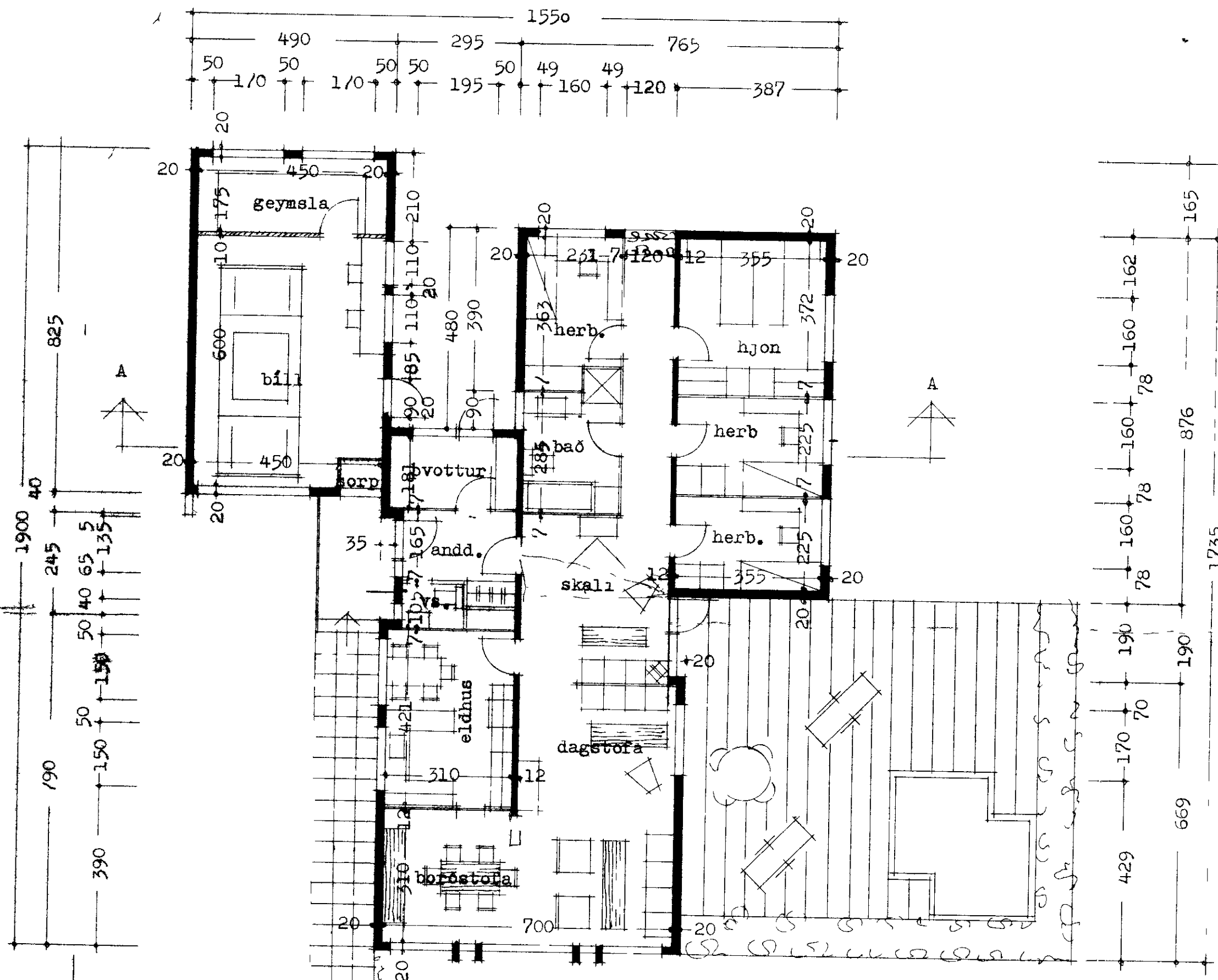


SAMPYKKT I BYGGINGANEFN  
8 júl 1975  
BYGGINGAFULLTRUINN I VESTMANNAEYJU  
Jóhann Ólafsson



Grunnmynd

Afstöðumynd m.l 500  
Flatarmál húss 141,92 m<sup>2</sup>  
Flatarm bílskurs 40,0 m<sup>2</sup>

Reykjavík 1 maí 1975

Jóhann Ólafsson