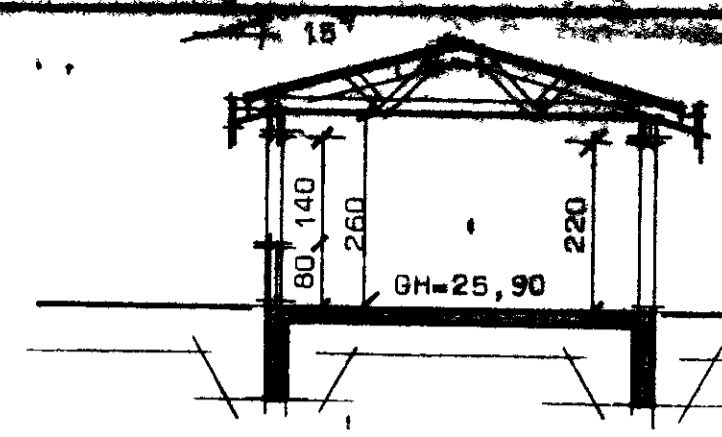
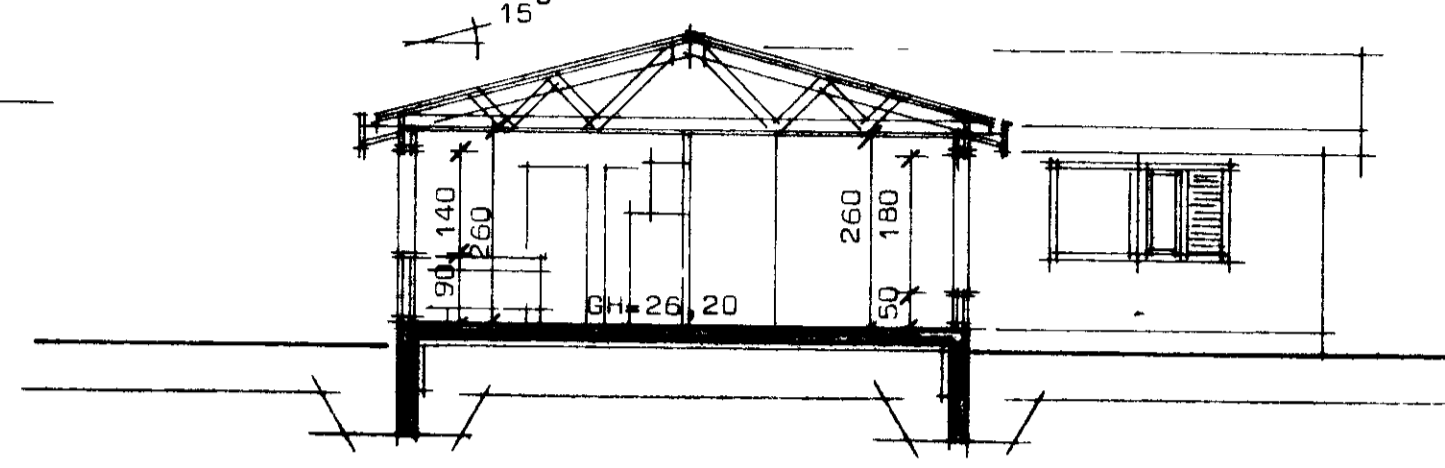


*Vallur Þóbjörnsson*



Sneiðing 1 bilg



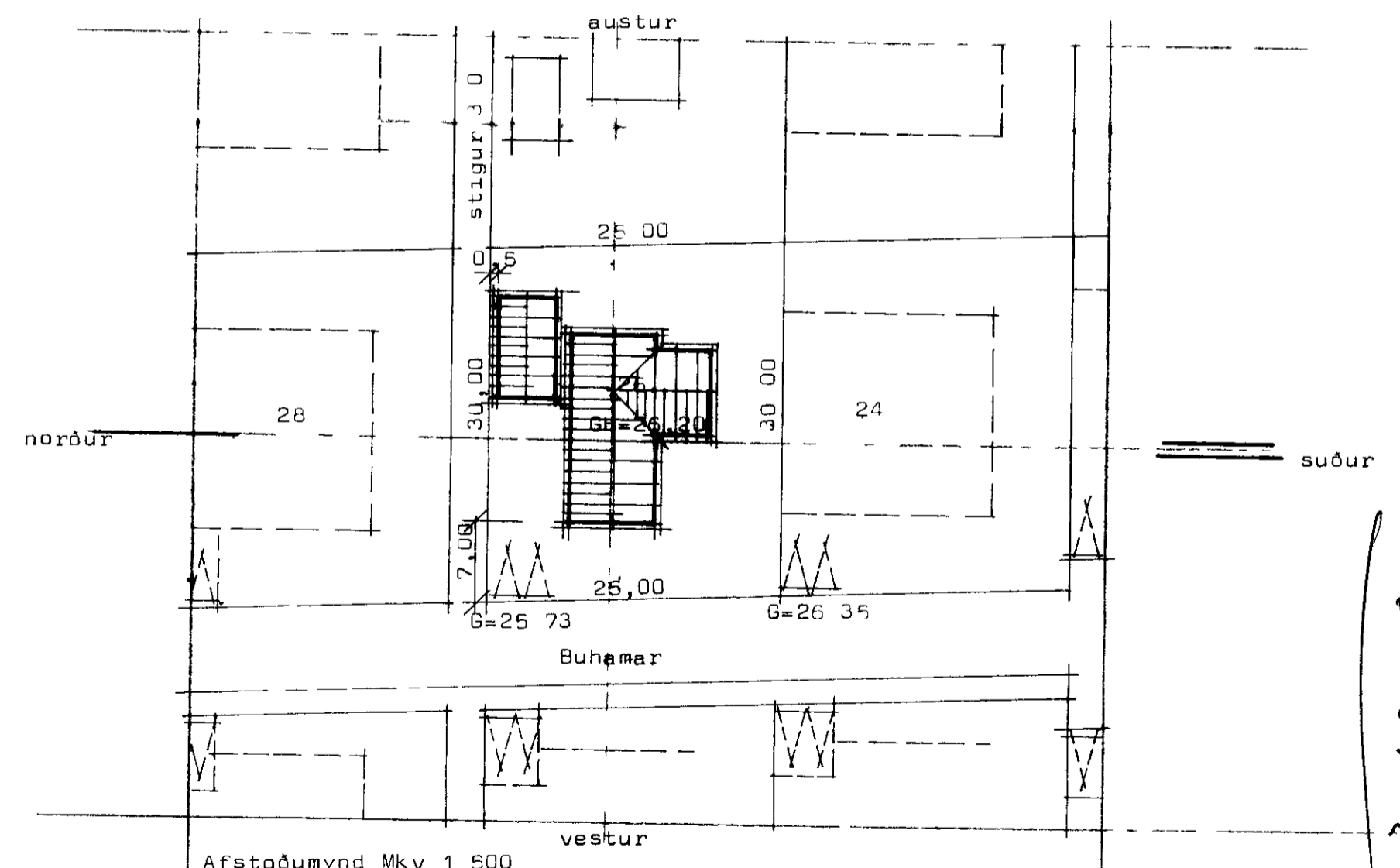
Sneiðing

Flatarmal huss	148 36
Flatarmal huss nettó	131 85
Flatarmal bilgeymslu	43 81
Heildarflatarmal	192 17
Rúmmal huss	490 00
Rúmmal bilgeymslu	136 00
Heildarrúmmal	636 00
Nytingarhlutfall	0 256

Kolnunartölur K a hitaveituvæði

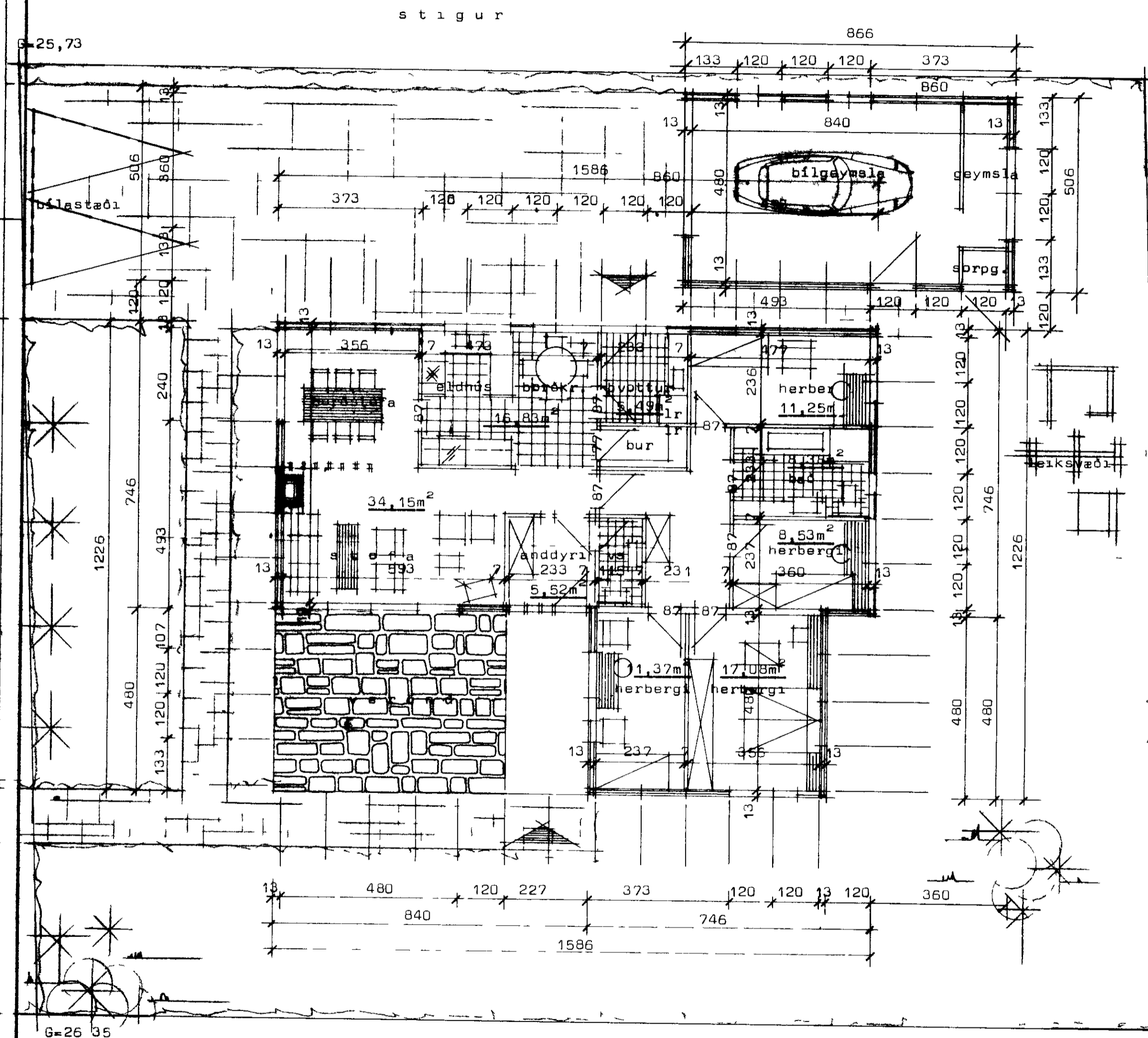
Þak	0 30 w/m <sup>2</sup> C <sup>0</sup>
Gólf	0,40 w/m <sup>2</sup> C <sup>0</sup>
Útveggir	0 80 w/m <sup>2</sup> C <sup>0</sup> vegið meðaltal

l<sub>r</sub> merkir loftras upp ur þaki Ø 125

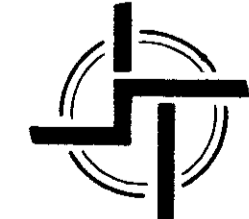


Afstaðamynd Mkv 1 500

3066-5907



G=26 35



**STAÐALHÚS** TIL

TEIKNISTOFA SIÐUMULA 31 SIMI 83141

VERKEFNI	DAGS	1979	VERK NR <b>ST 131</b>
Grunnmynd og sneiðing	MKV	1 100	
Búhamar 26 Vestmannaeyjum	BR		
	BLAD NR	1 01	

*Staðalhus* *Einar P. Kristjánsson*