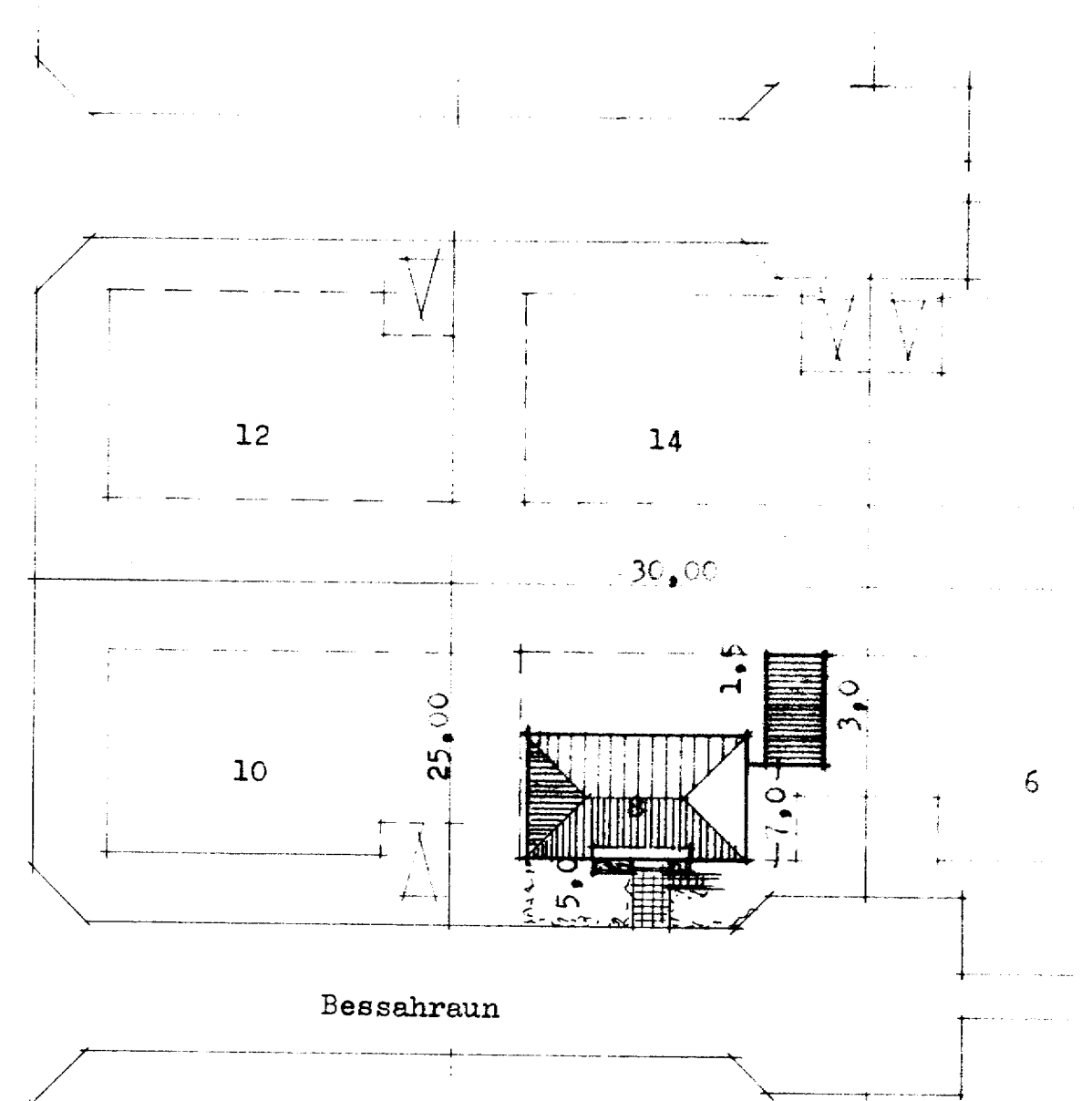
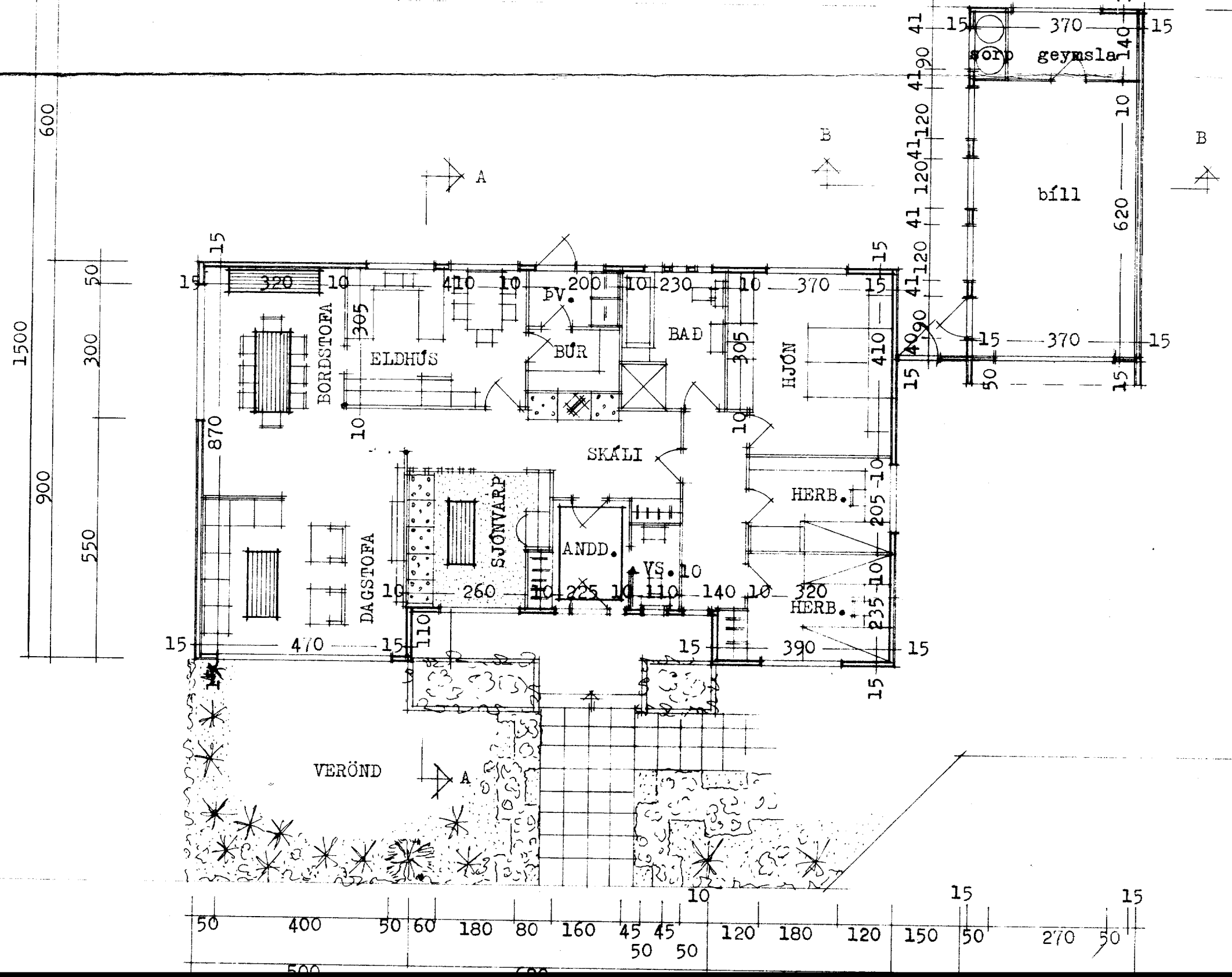
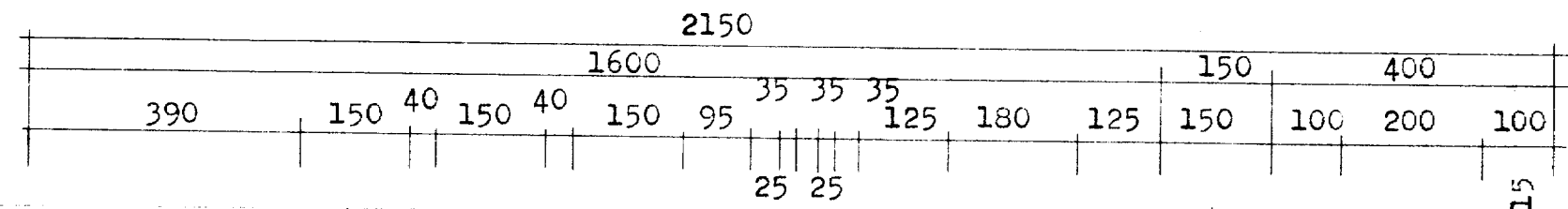


gengið skal frá hlið bílskúrs í samræmi við byggingar- og brunamálasamþykkt.



afstöðumynd m.1:500
 flatarmál húss 136,5 m.²
 flatarm.bílsk. 32,0.m.²

E S Teiknistofa Efstasundi 51 Rvík S.33930

Eðvarð Guðmundsson S.30249
 Sigurður Kjartansson S.83237

Reykjavík í júní 1978

Sigurður Kjartansson