

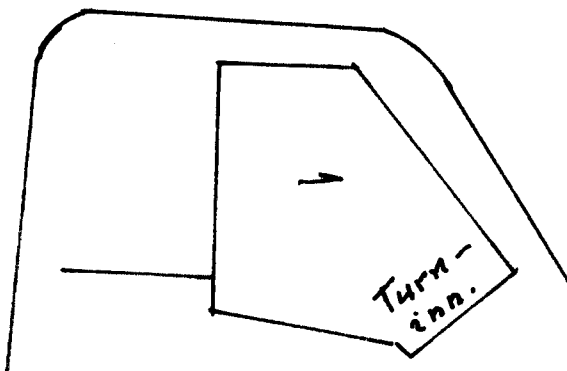
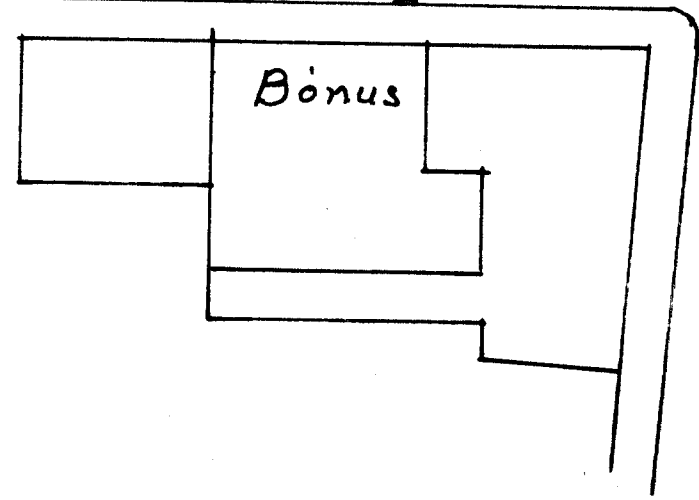
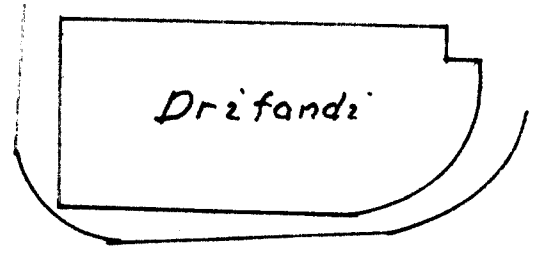
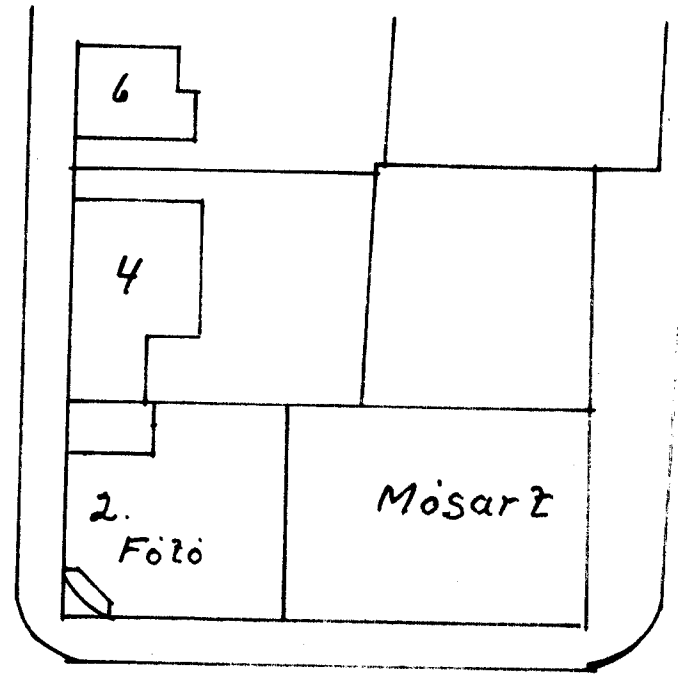
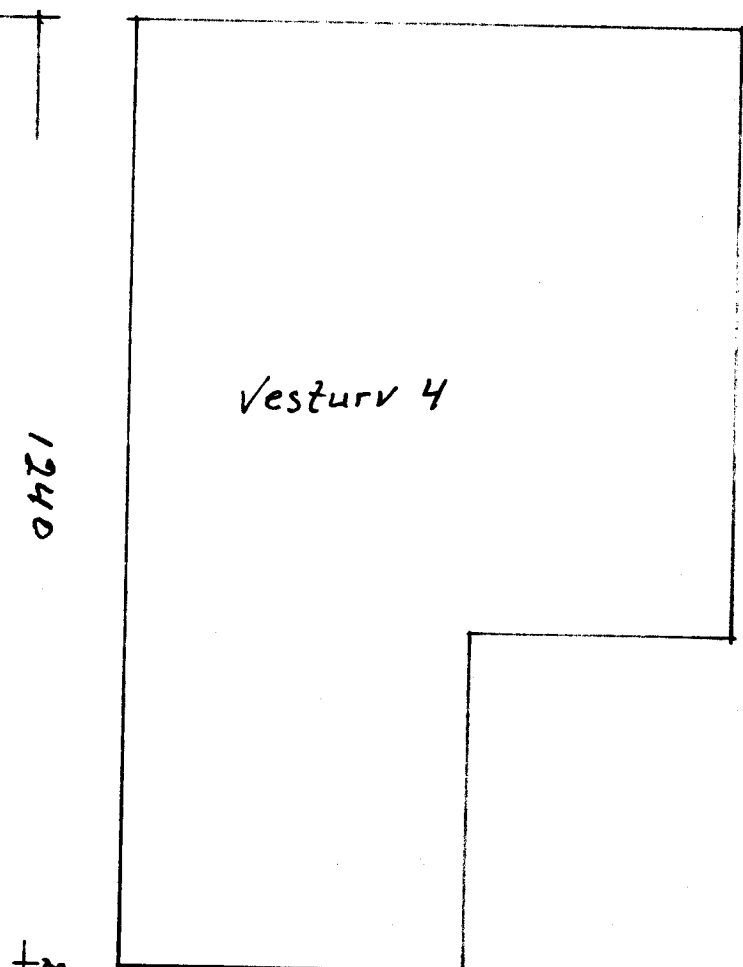
Vesturvegur

Vesturvegur

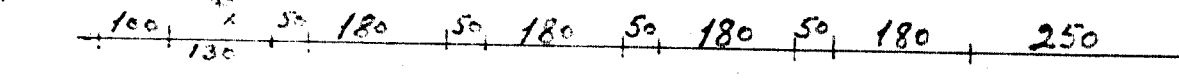
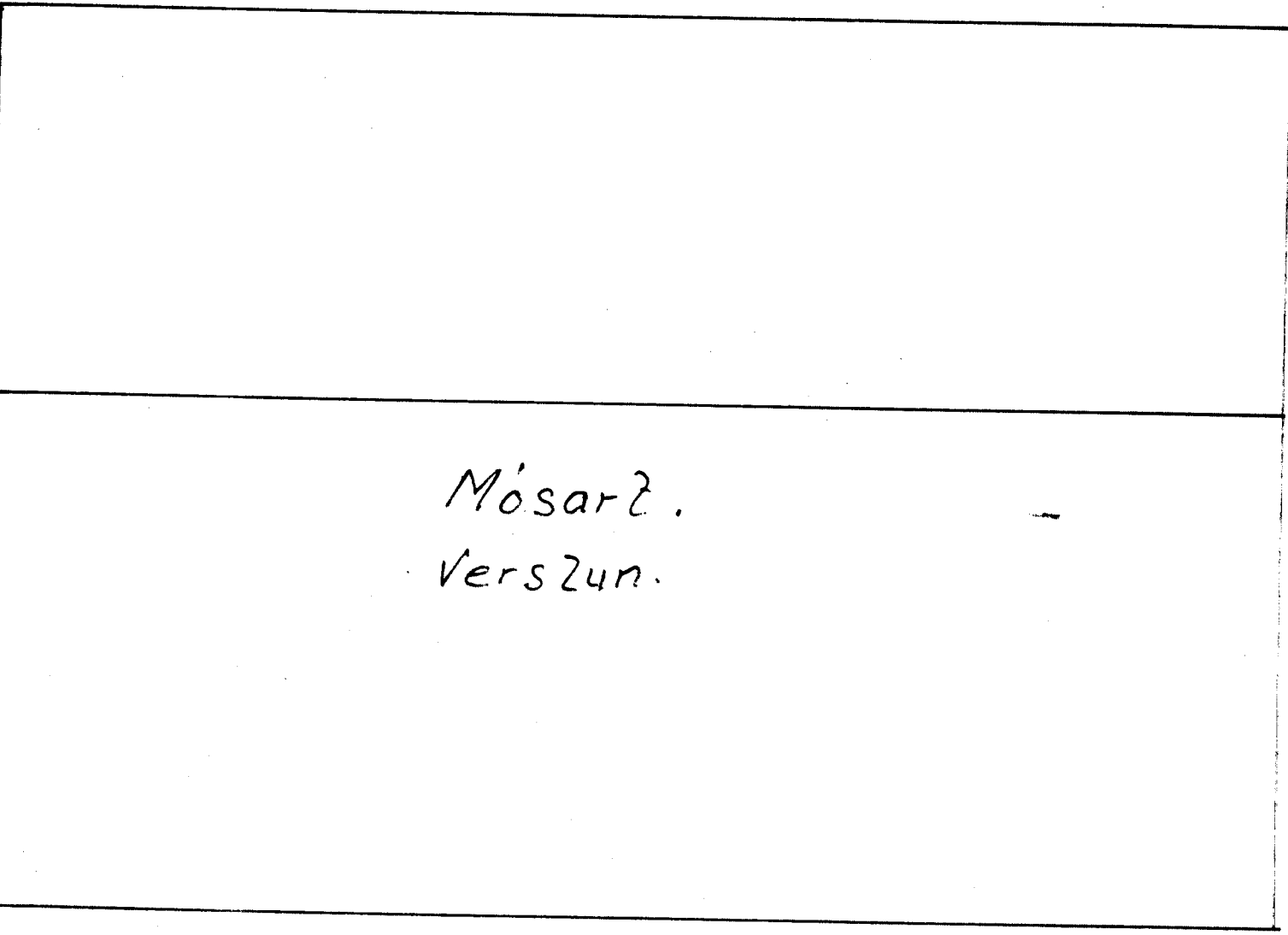
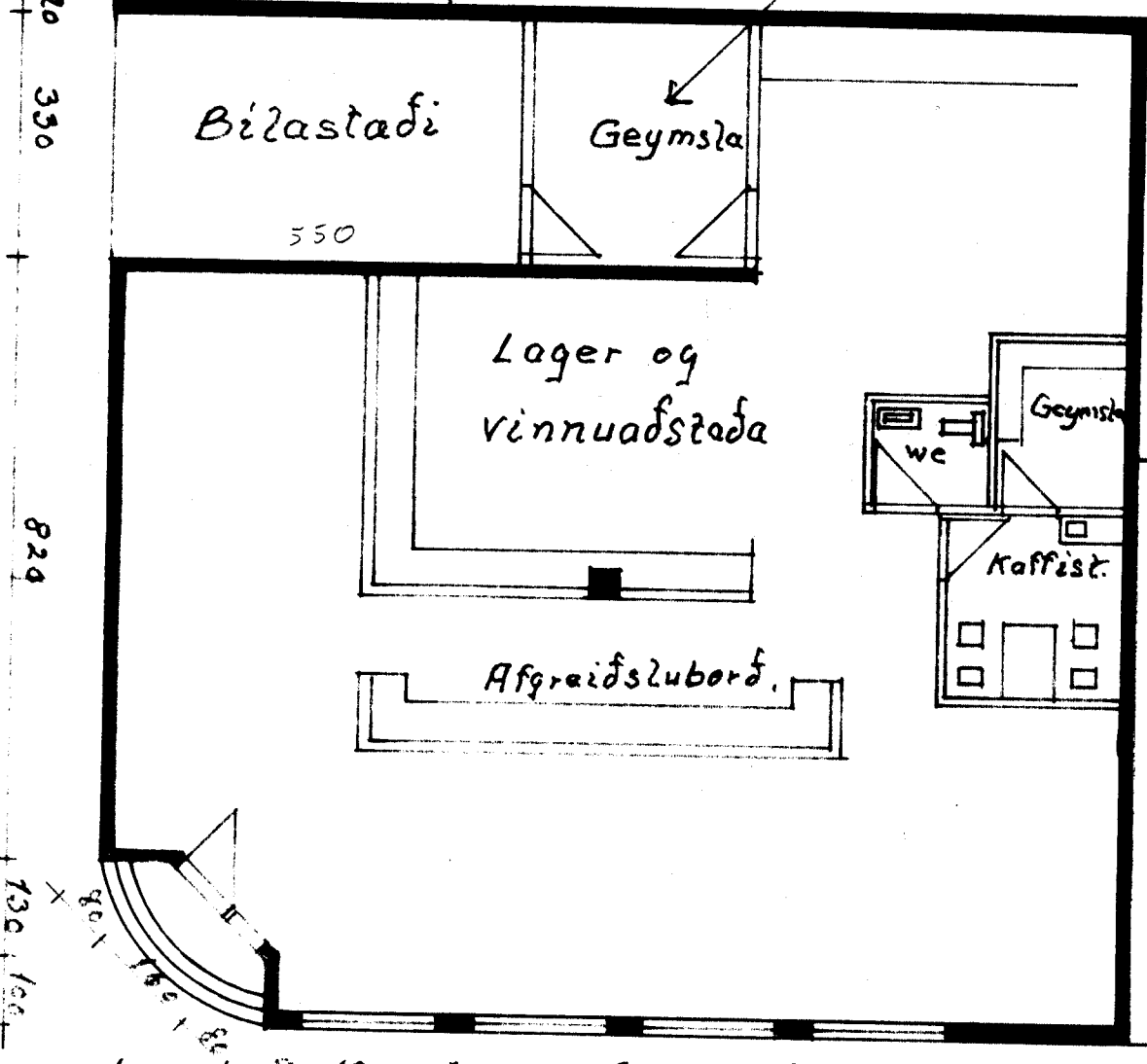
Miðstræzi

Bárugata

N →



Szigagangur ef byggð yrði ofaná húsið.



1400
Bárug.

2000

Borustigur 8

1: 100	Vesturvegur 2
1: 500	Verslunarkús.
Örnefnd	Grunnmynd og
mál i	afsöðumynd.
senzim.	
	Fláarmál. 178m ²
Teiknað	Rúmmál
2	
sept	Agúst Hreggviðsson
1990	