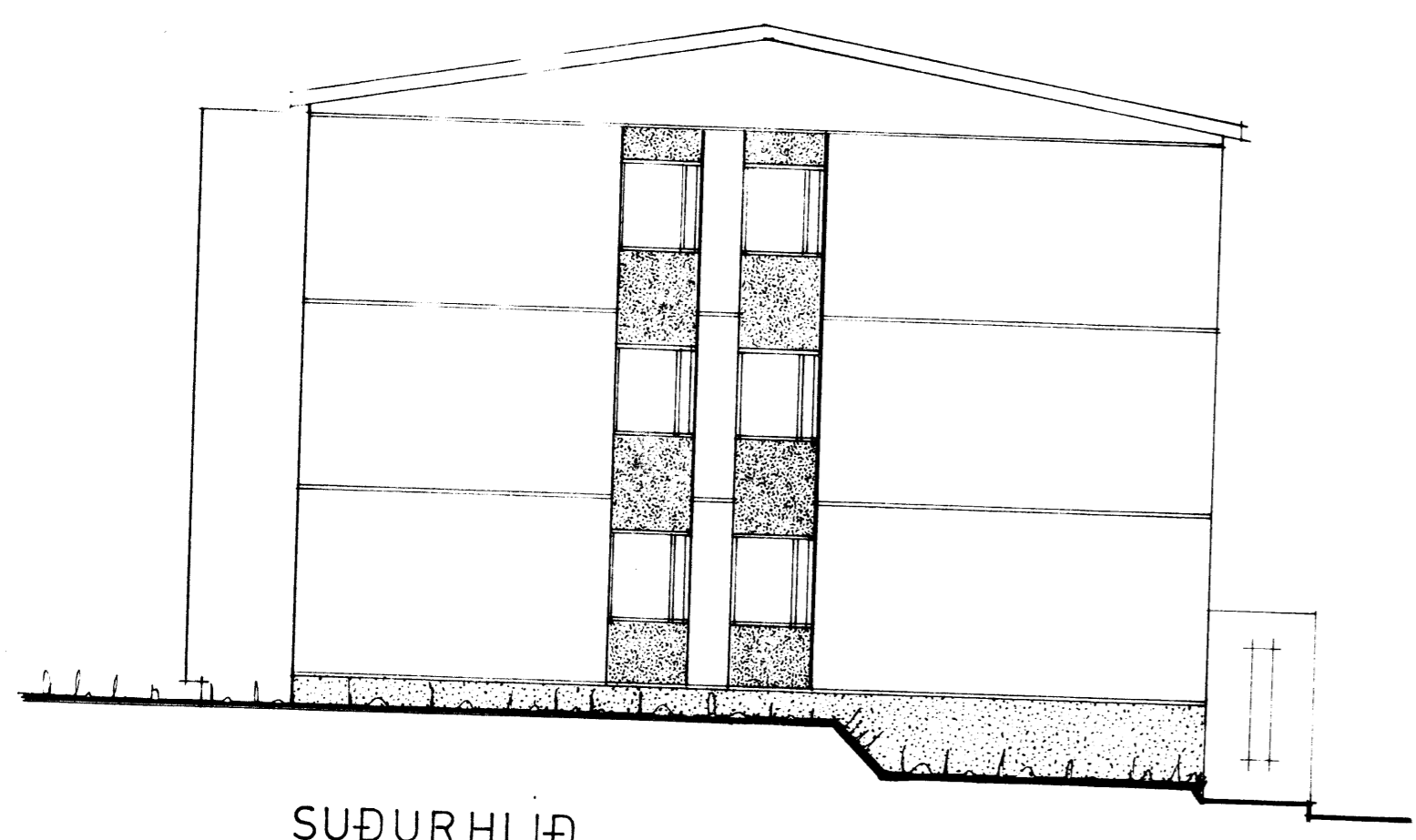
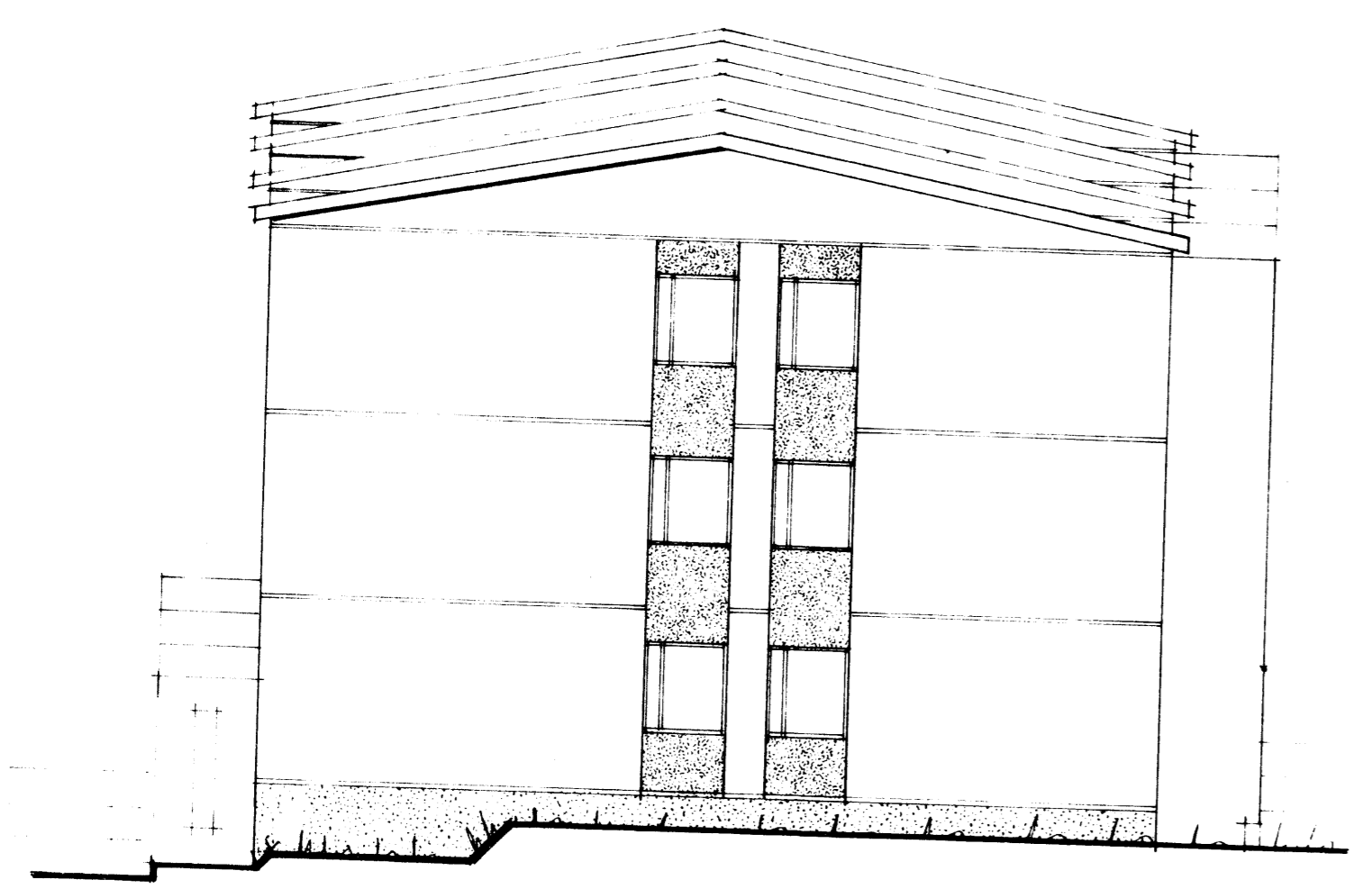


495

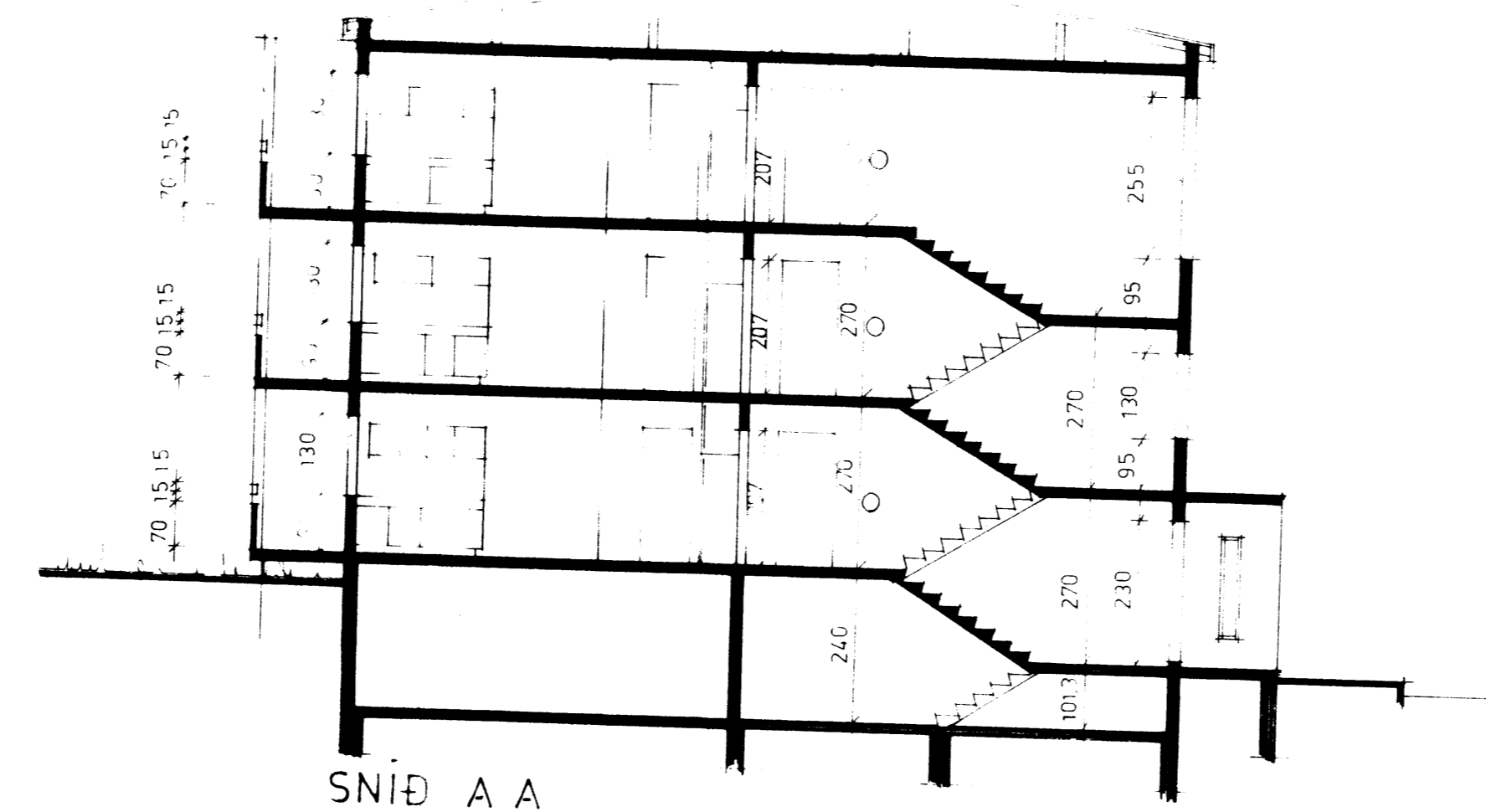
SAMPYKKT Í BYGGINGANEFND
27.08.87
BYGGINGARULLTRUINN Í VESTMANNAEYJUM
Jón Þorgrímur



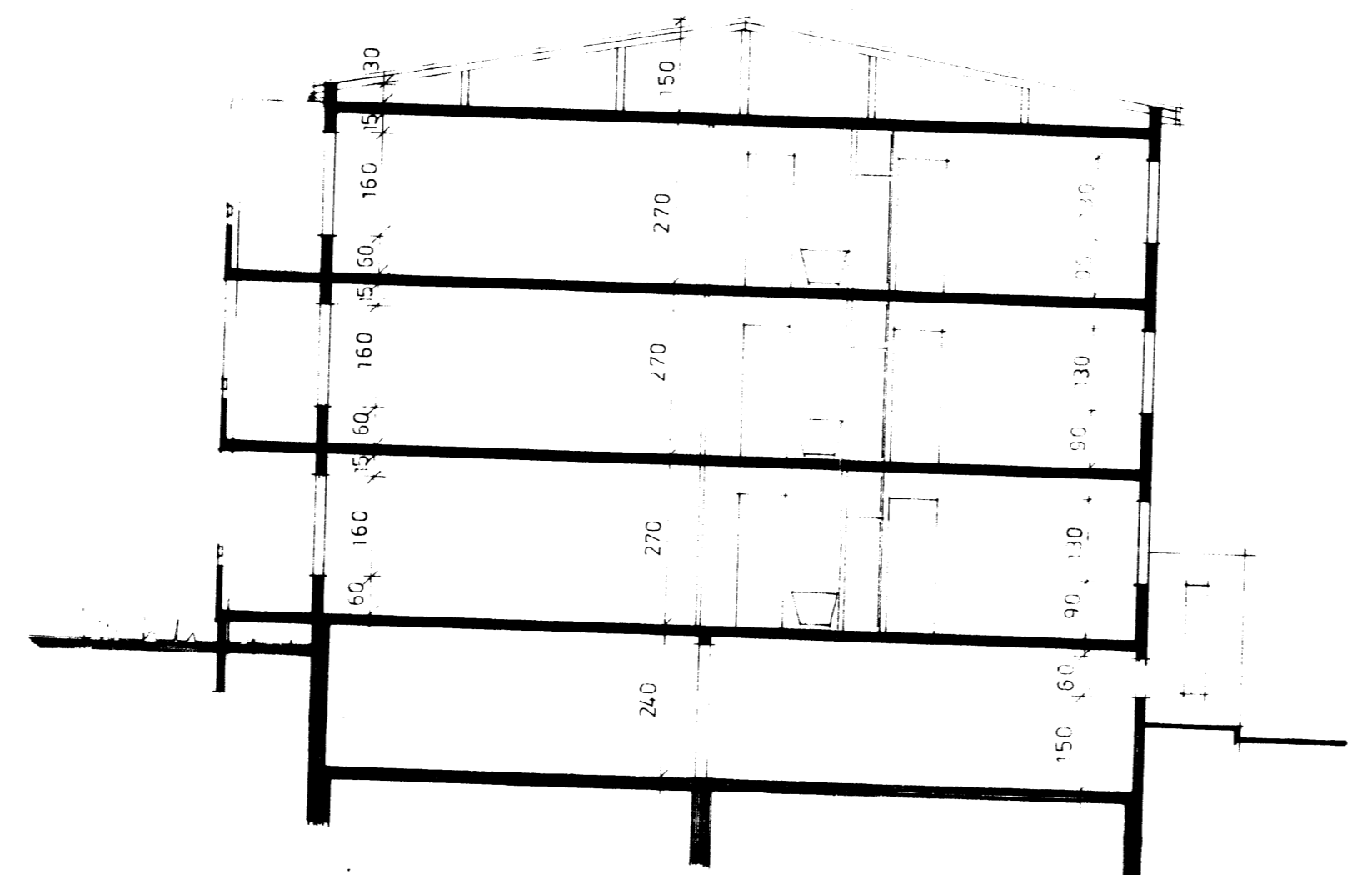
SUÐURHLIÐ



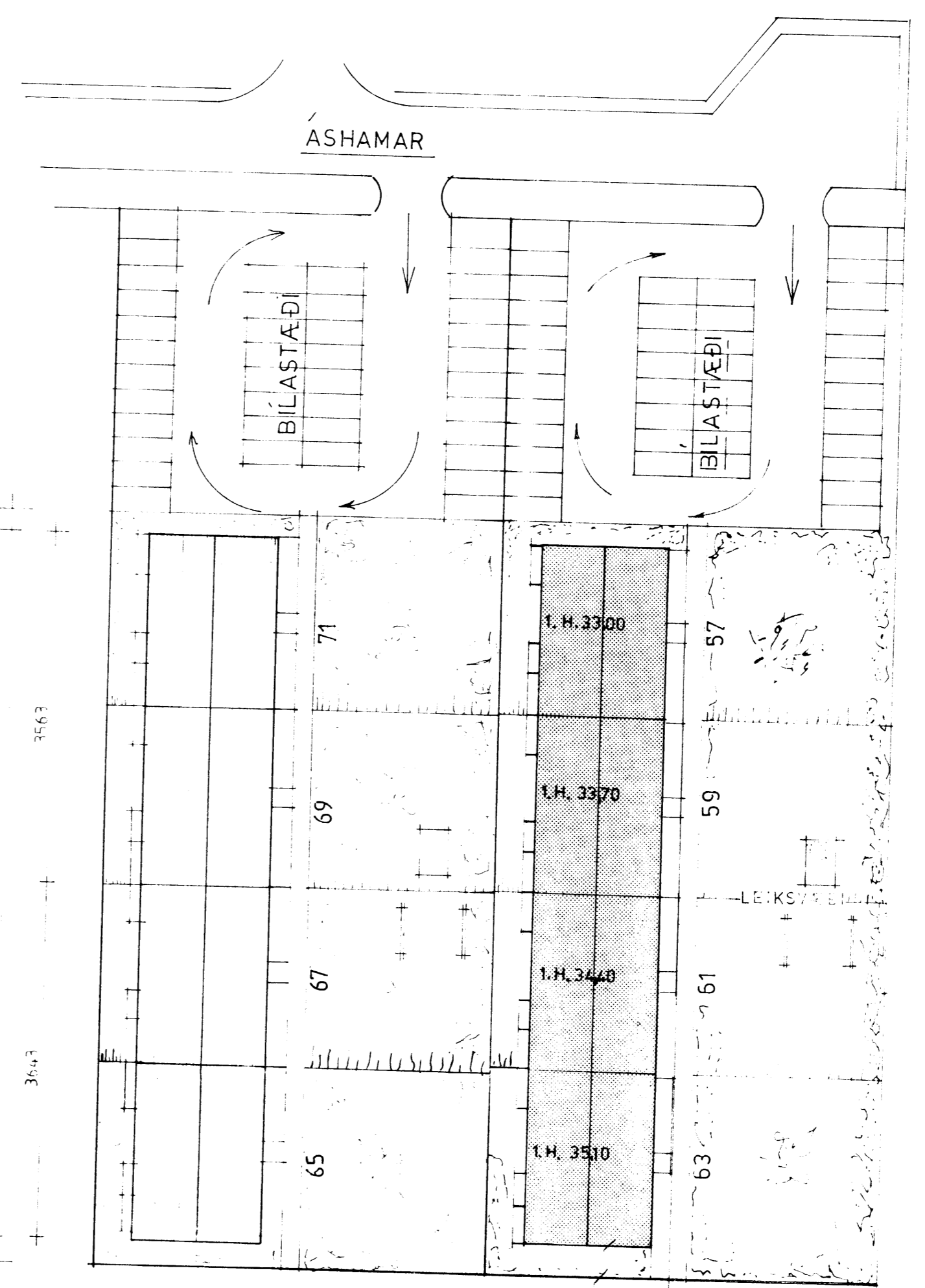
NORÐURHLIÐ



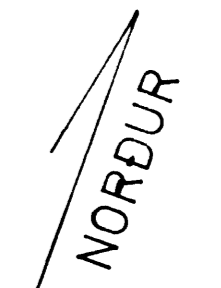
SNIÐ A-A



SNIÐ B-B



AFSTÖÐUMYND 1:500



STÆRDIR (HÖS 65, 67, 69, 71)

KJALLARI	958,40 m ² (STÆKKUN 10,64) - 2300,2 m ³ (STÆKKUN 25,6)
1. HÆÐ	958,40 m ² (STÆKKUN 10,64) - 2587,7 m ³ (STÆKKUN 28,7)
2. HÆÐ	958,40 m ² (STÆKKUN 10,64) - 2587,7 m ³ (STÆKKUN 28,7)
3. HÆÐ	958,40 m ² (STÆKKUN 10,64) - 2587,7 m ³ (STÆKKUN 28,7)
ÞAK	- 862,6 m ³ (STÆKKUN 9,6)
ALLS:	3823,60 m ² (STÆKKUN 42,56) - 10925,9 m ³ (STÆKKUN 121,3)

STÆRDIR: (HÖS NR 57, 59, 61, 63)

ÞAK	853 m ³
3. HÆÐ	947,76 m ² 2559 m ³
2. HÆÐ	947,76 m ² 2559 m ³
1. HÆÐ	947,76 m ² 2559 m ³
KJALLARI	947,76 m ² 2274,6 m ³
ALLS:	3701,04 m ² 10801,1 m ³

ASHAMAR: (57, 59, 61, 63 OG) 65, 67, 69, 71.
VESTMANNAEYJUM

HEITI: ÚTLIT, SNIÐ OG AFSTÖÐUMYND
MÁL: 1:100, 1:500, 1:500
DAGS: DES. 1975 Þ.M. 27
TEIKNAD: *Jón Þorgrímur*

BREYTT MARS 1987
STIGAHÚS NR 69-71 BREIKKUD
TIL SAMRÆMIS VIÐ GILDANDI
BYGGINGARREGLUGERÐ
Staðfesting