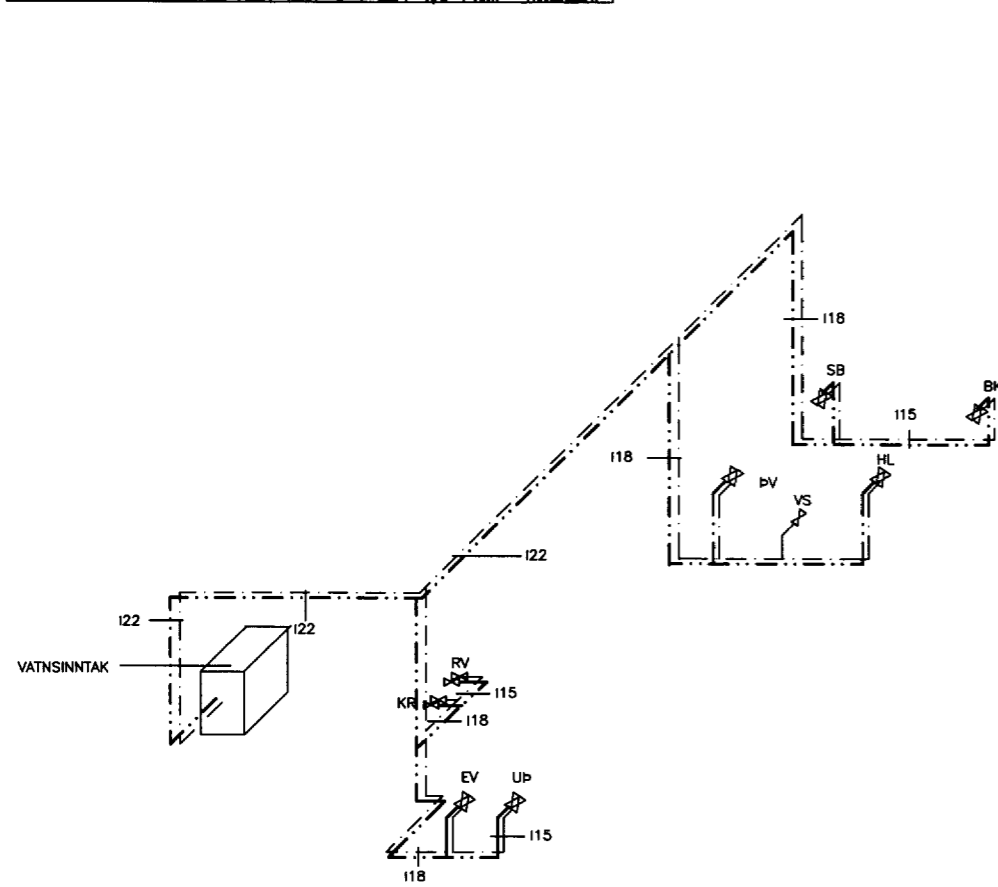
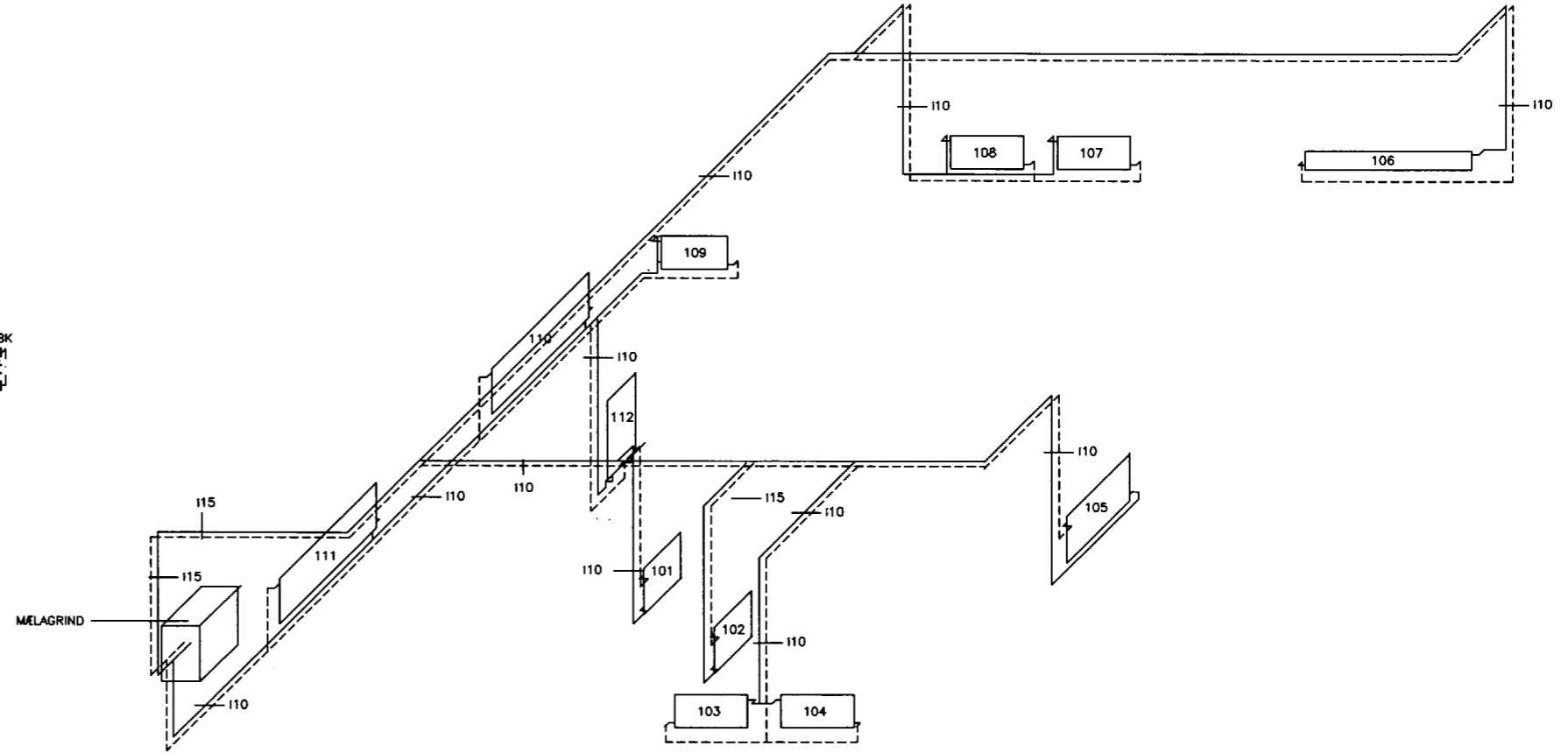


OFNASKRÁ

OFN NR.	HEBBERGI/NR.	HAUDS. AFDRÖT W	HAMMRS. HBD mm	LEIÐI LIND mm	BYGRT TEG.	VILIN AFDRÖT W	TEGUNG A B	OFNLOKAR GEND	ATH.
101	FLÖÐIR	1002	800	800	725	1018	C/D	BA	
102	ANDVIRI	408	800	800	EX	488	C/D	FVR	
103	HEBBERGI	877	800	1100	EX	842	A/D	BA	
104	HEBBERGI	877	800	1100	EX	842	C/B	BA	
105	KVI	887	800	1300	EX	784	C/B	BA	
106	STÖPA	2128	210	2800	63W	2281	C/B	BA	
107	REZNI-HEBBERGI	1280	800	1100	EX	842	A/D	BA	
108	REZNI-HEBBERGI	1280	800	1100	EX	842	A/D	BA	
109	REZNI-HEBBERGI	883	800	1100	725	1183	A/D	BA	
110	REZNI-HEBBERGI	2883	800	2000	T	1888	A/D	FVR	
111	REZNI-HEBBERGI	800	800	2000	T	1888	A/D	FVR	
112	REZNI-HEBBERGI	818	800	1200	F	828	A/B	FVR	HAMMLOFN



RÚMMYND VATNSLAGNA MkV 1:50



RÚMMYND HITALAGNA MkV 1:50

breyting					
breyting A	breyting C	verkheiti	ÁSHAMAR 43 VESTMANNAEYJUM	PÁLL ZÓPHÓNÍASSON TEIKNISTOFA	verk nr. 9519
breyting B	breyting D	verkefni	RÚMMYND HITA- OG VATNSLAGNA	RÁÐGJAFAYERKFRÆÐIÞJÓNUSTA F.R.V. KIRKJULEGL 23, 800 VESTMANNAEYJUM	dag. ÁGÚST 95