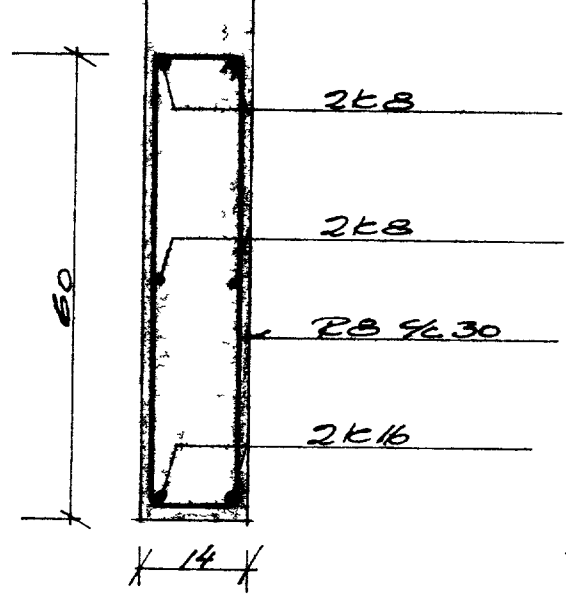
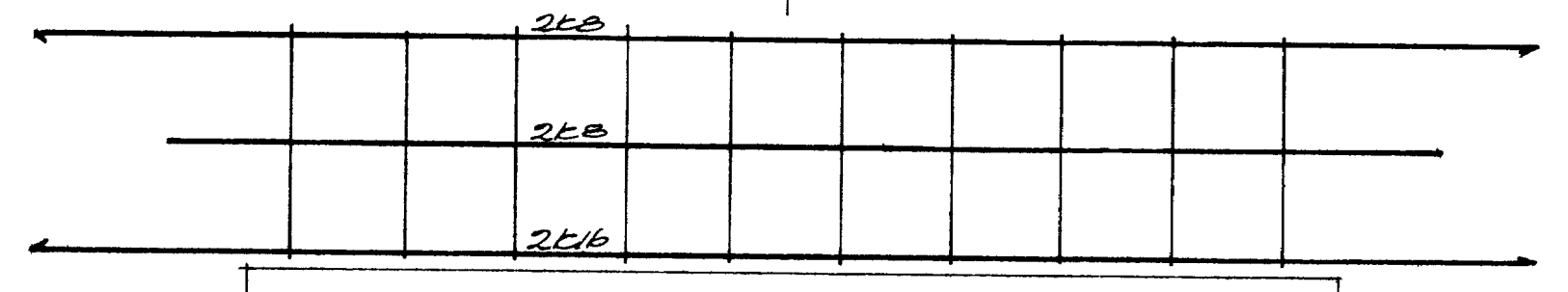


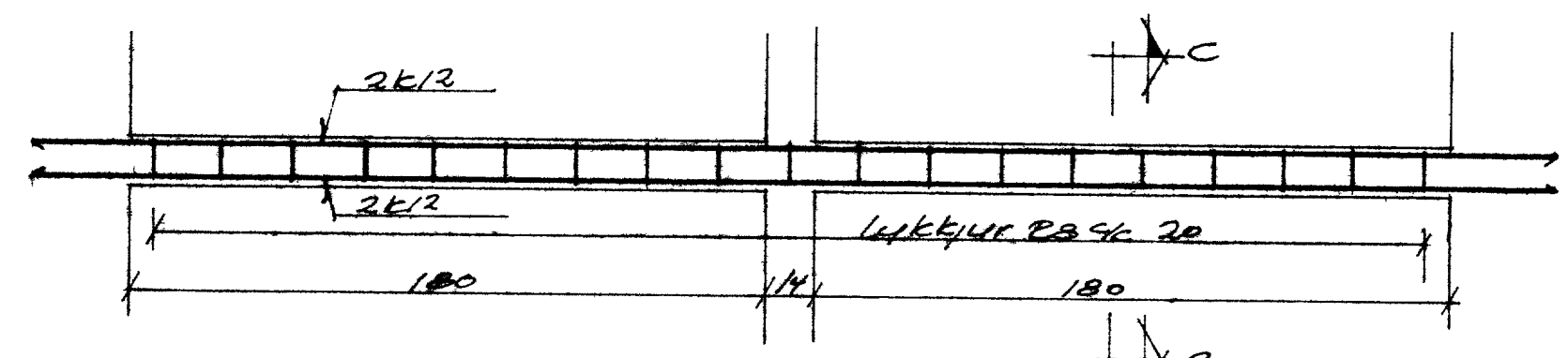
Snid B-B



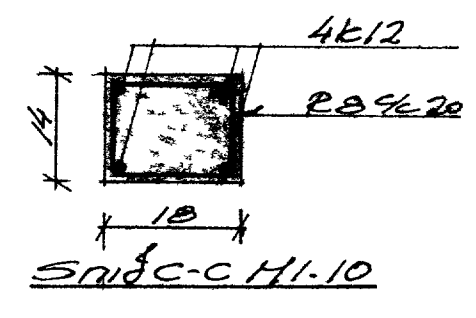
B



Snid A-A M: 20

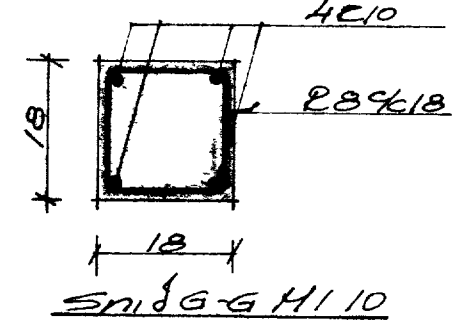


Butl B3 M: 20

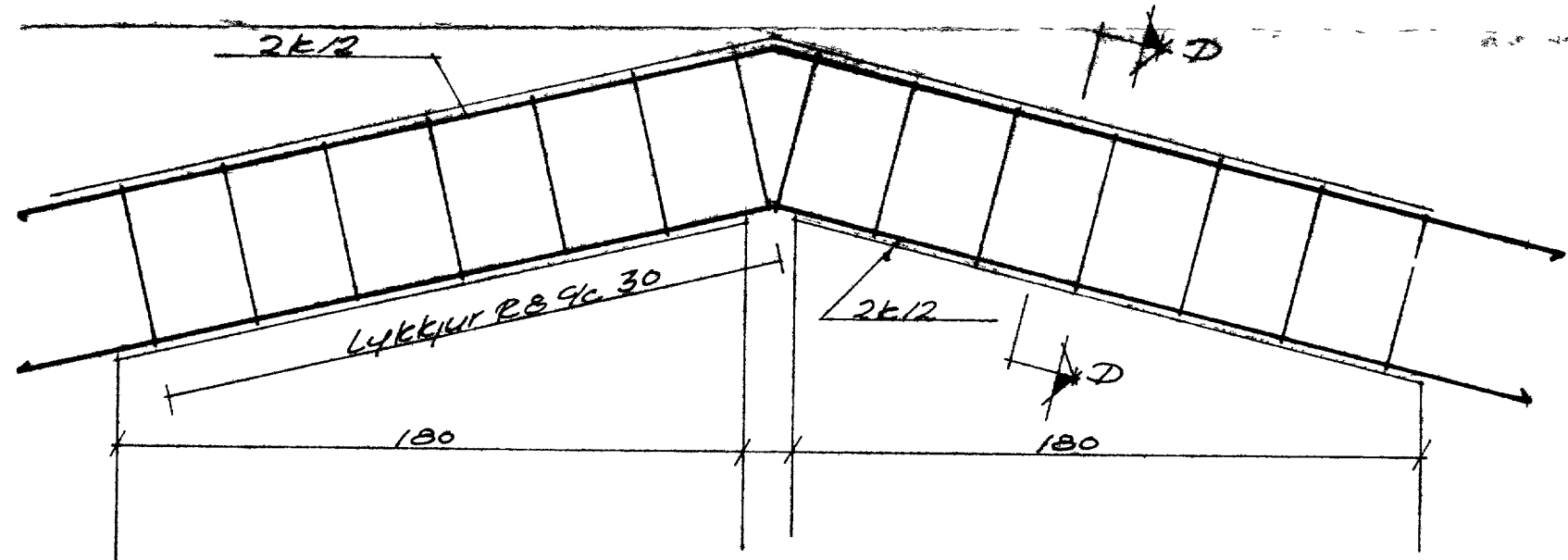


Snid C-C M: 10

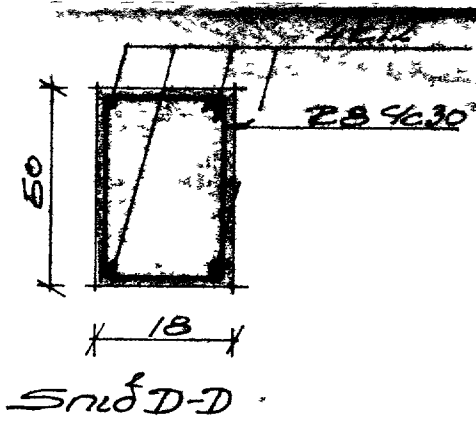
Butl B1 M: 20



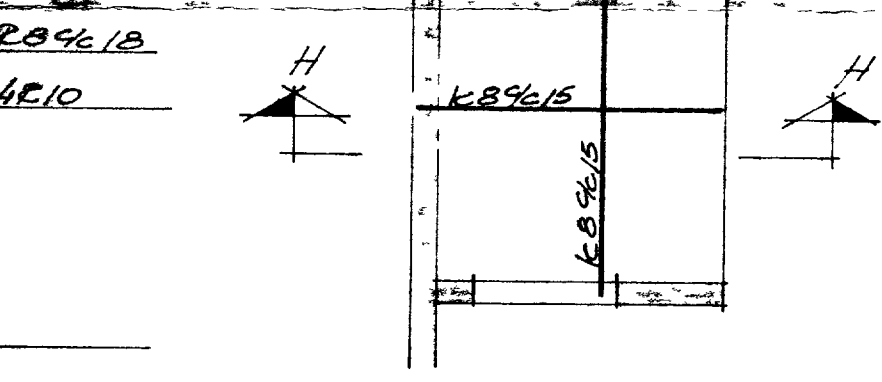
Snid G-G M: 10



Butl B4 M: 20

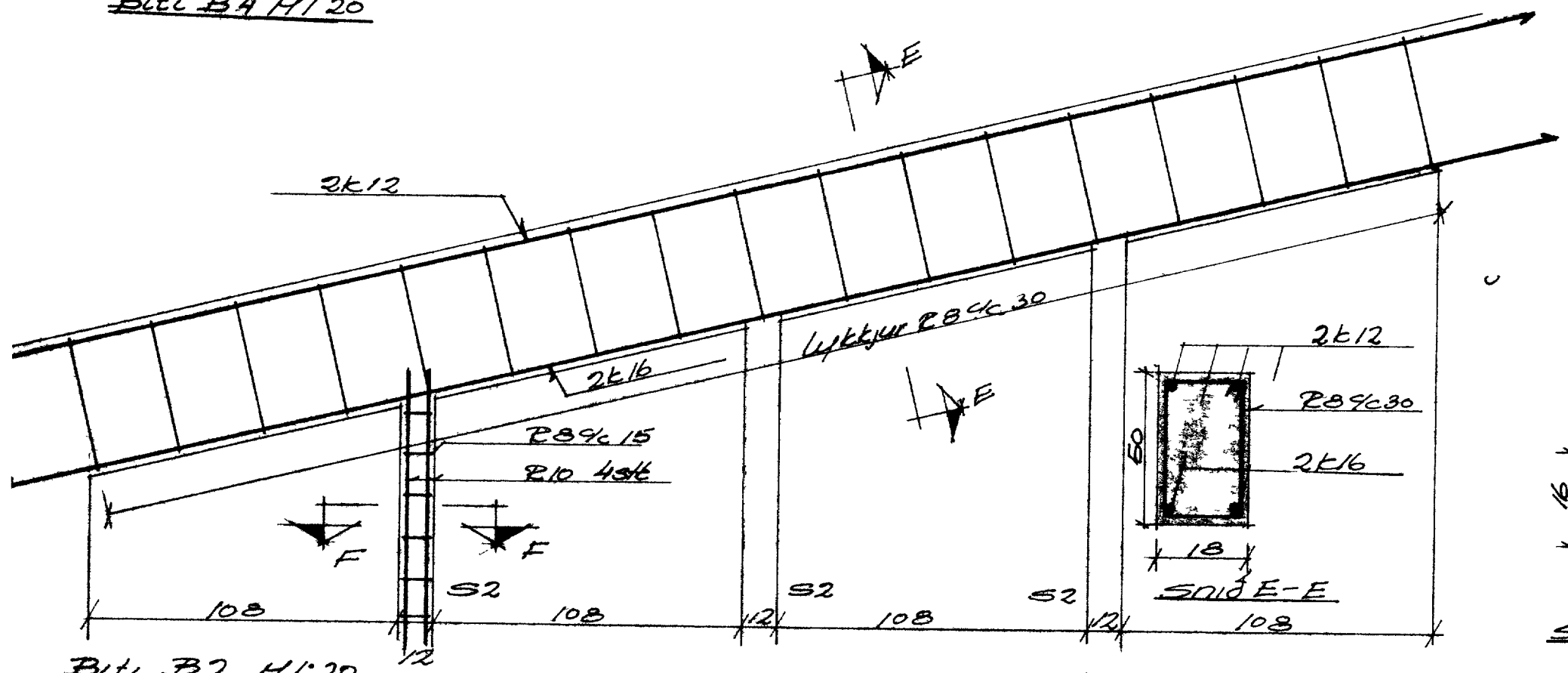


Snid D-D

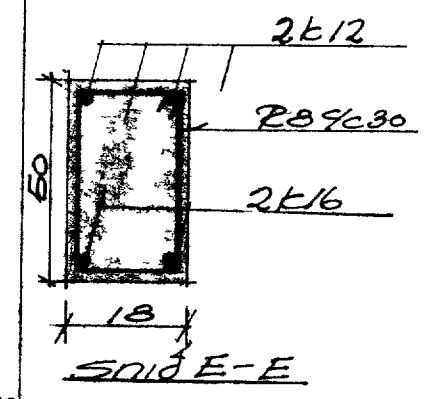


Andynsplate M: 50

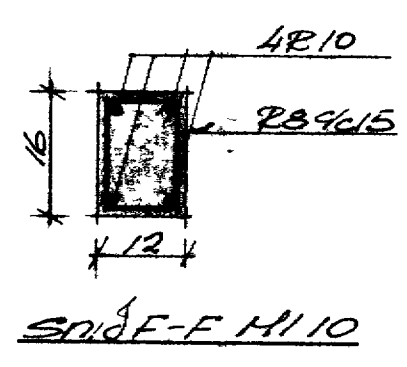
Snid H-H M: 20



Butl B2 M: 20



Snid E-E



Snid F-F M: 10

Sula S1 M: 20

Ashamar 4, Vestmannaeyjum	
Sperrur, butar og sulur	okt 1974
	M: 20, 10, 150
	B: 2