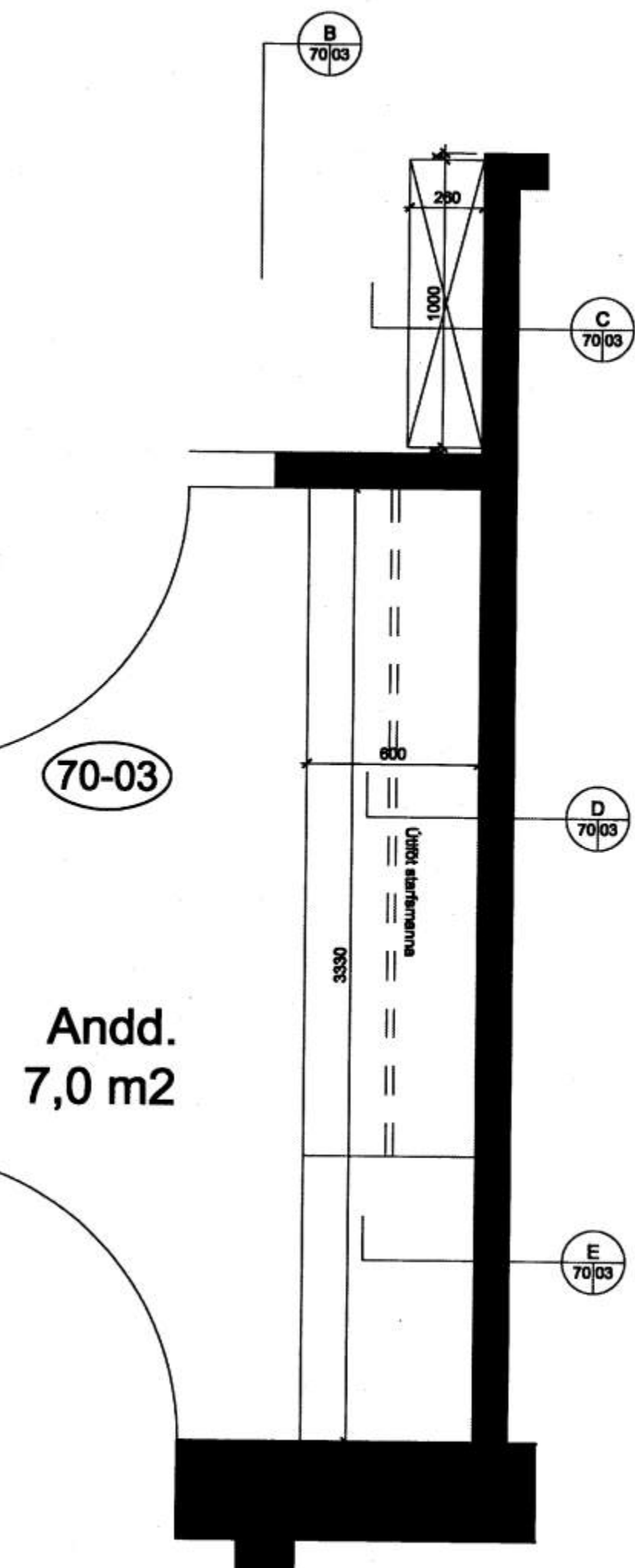
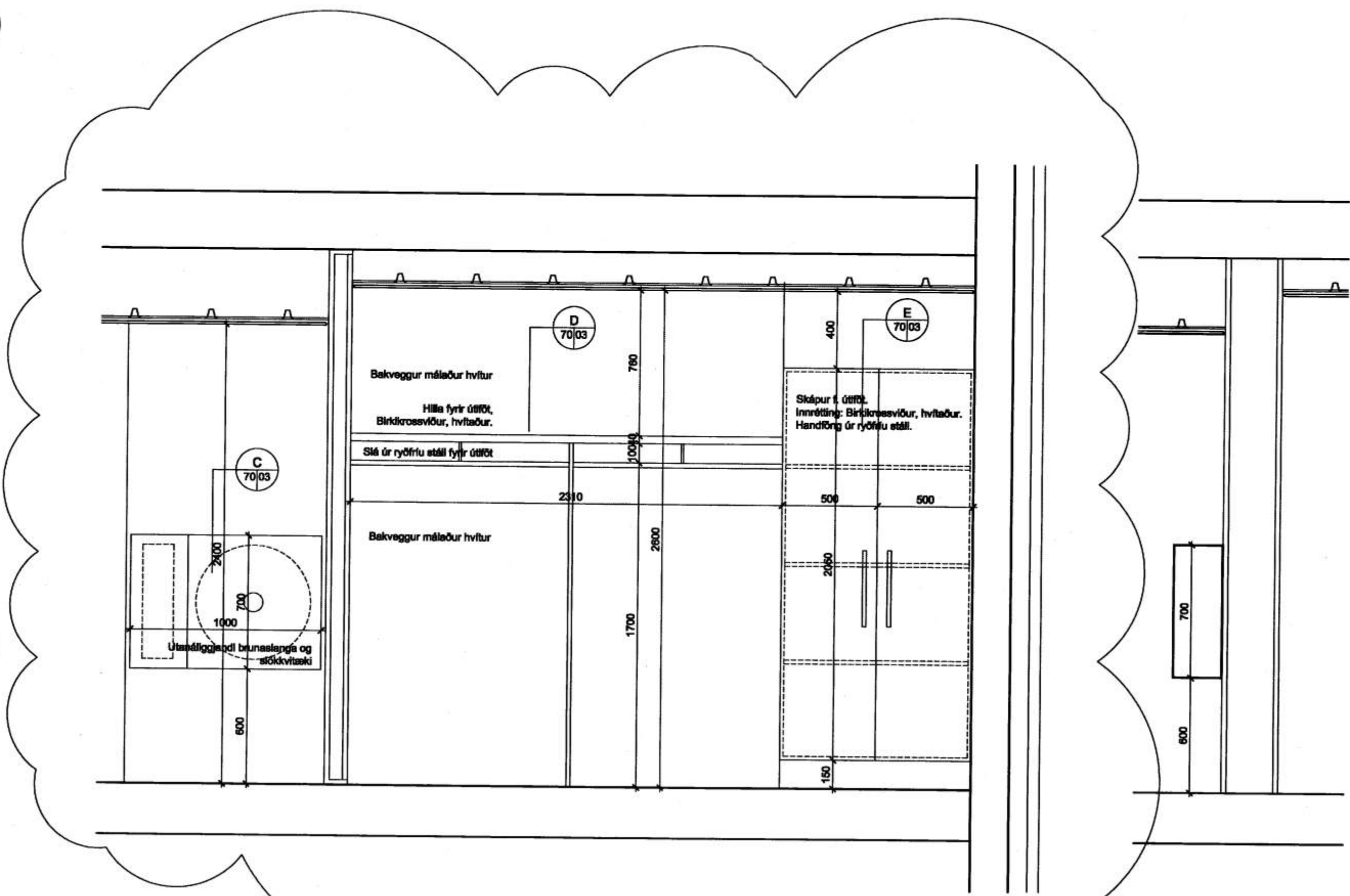


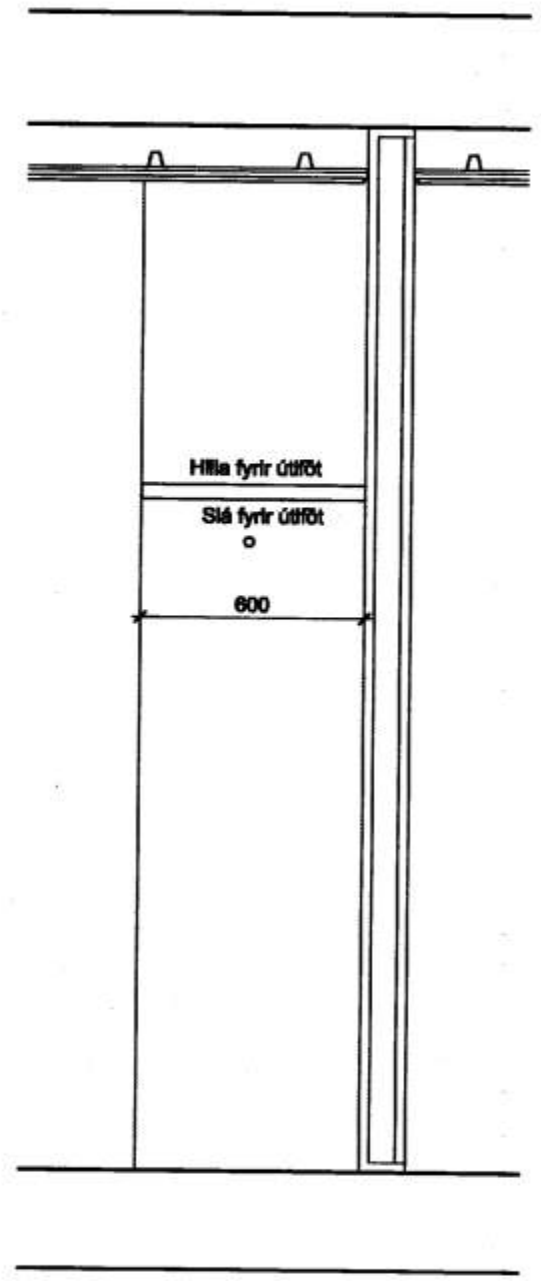
A 70/03 Grunnmynd, salemi og anddyri 1:20



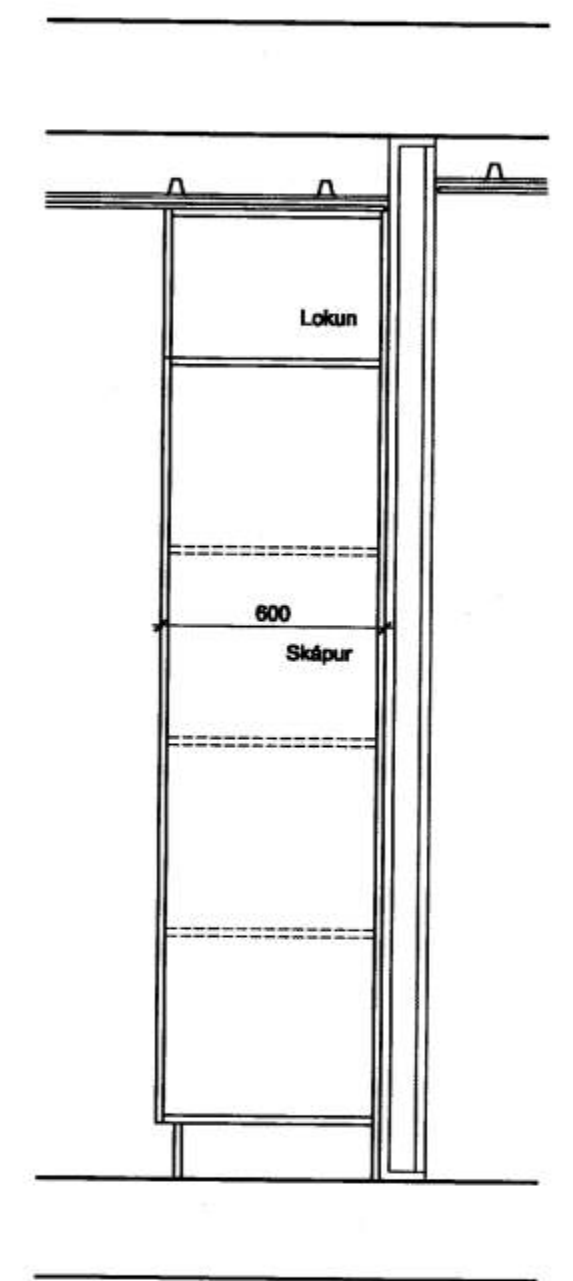
B 70/03 Snið og útlit, kassi f. brunasl. + slökkvitæki 1:20



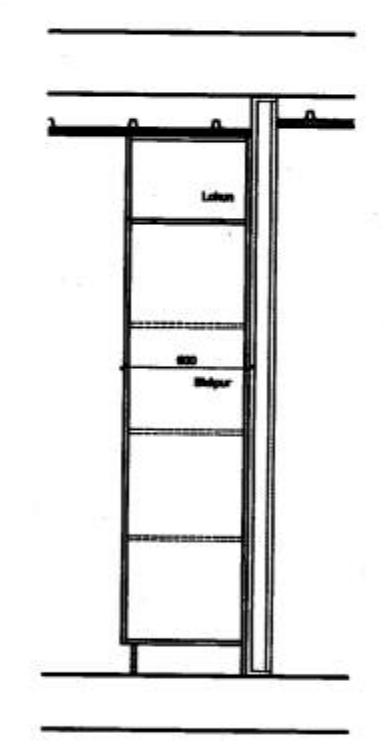
C 70/03 Snið, brunaslönguk. 1:20



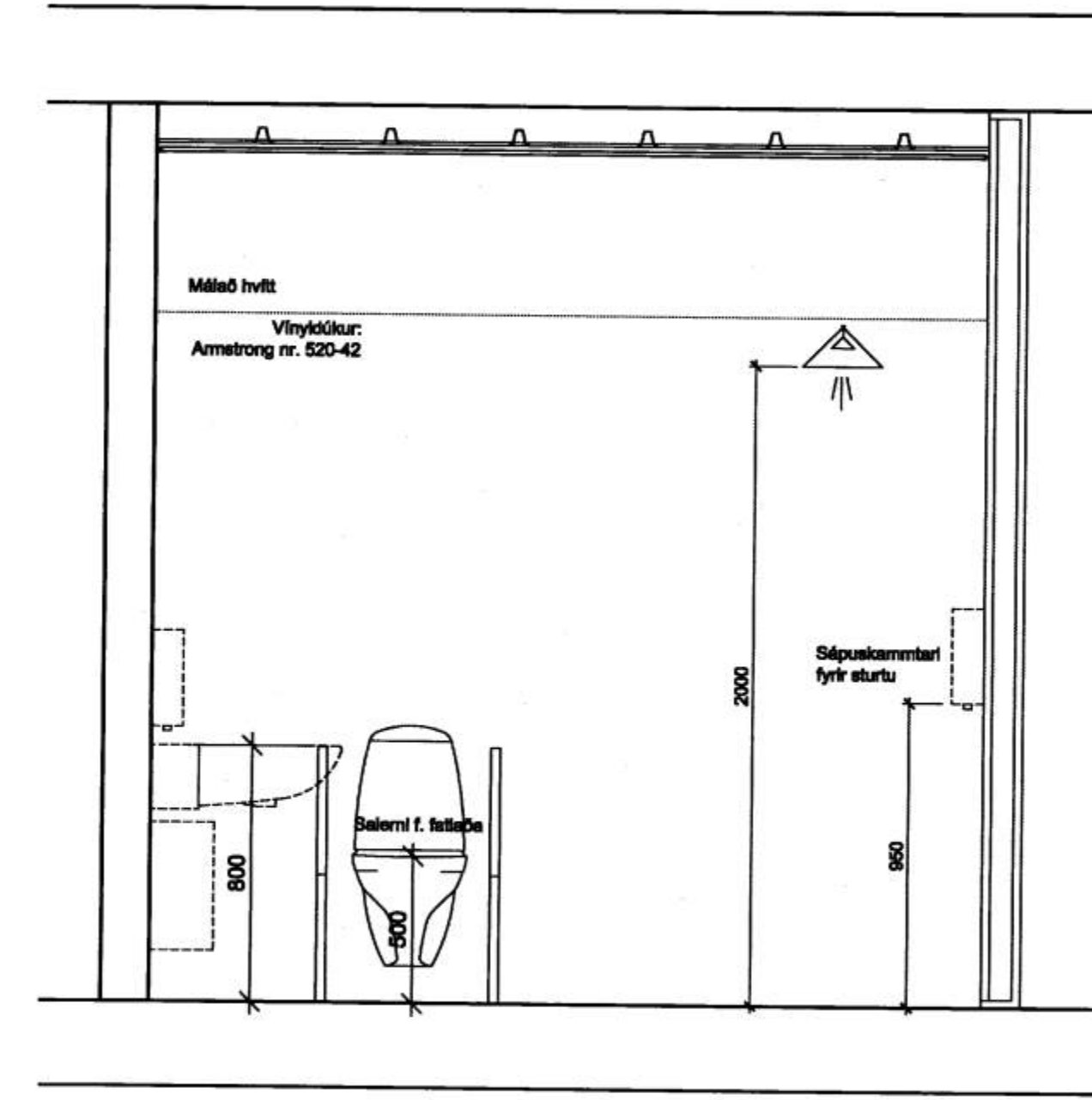
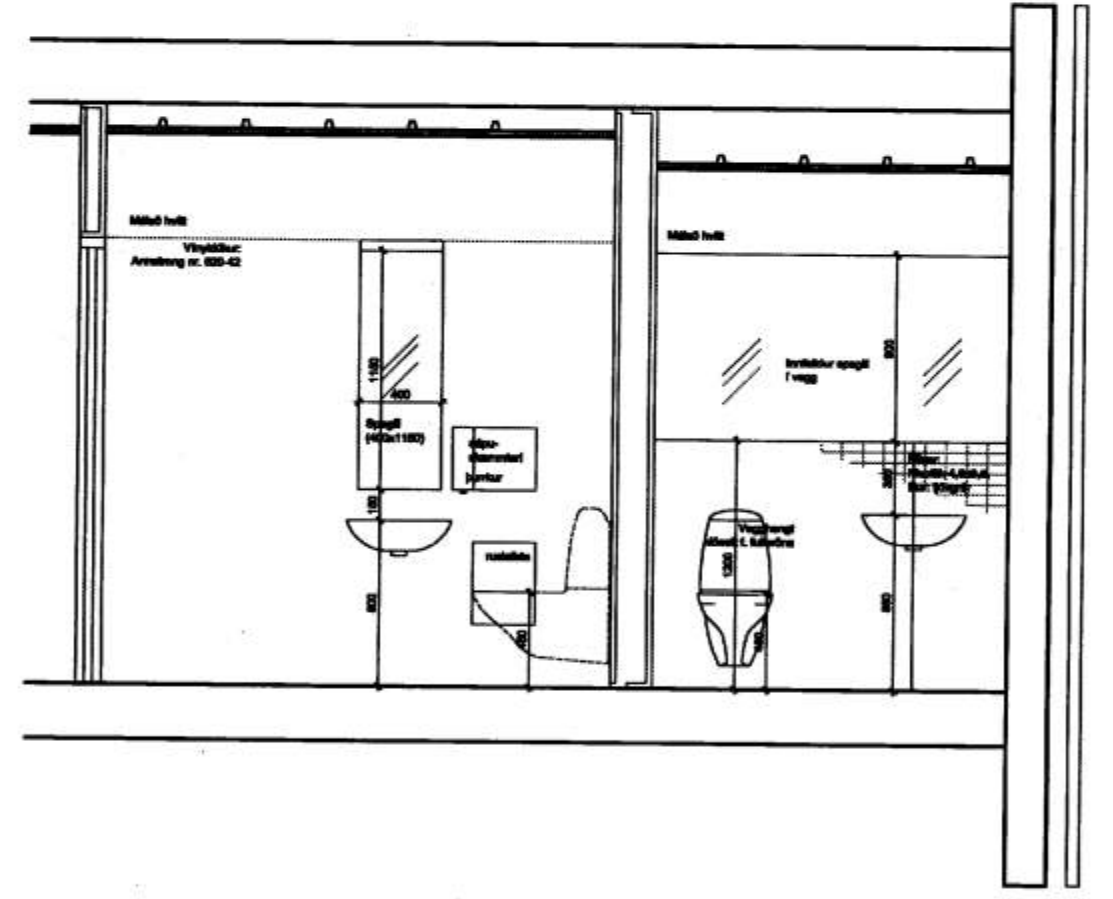
D 70/03 Snið, fatahengi 1:20



E 70/03 Snið, fataskápur 1:20



F 70/03 Ásýnd, salemi fatlaðra og salemi við inngang 1:20



G 70/03 Ásýnd, salemi fatlaðra 1:20

Athugið:  
Öll mál og aðstæður athugist á staðnum fyrir smíð.

B1: Breyting á loftæð, númeri skilgrán. á efnisvél. brygging

LEIKSKÓLINN SÓLI, VESTMANNNAEYJUM

INNRETTINGAR:  
Salemi og inngangur

28.10.2006 1:20 07.11.05 70-03  
daga máls brygging skil.

