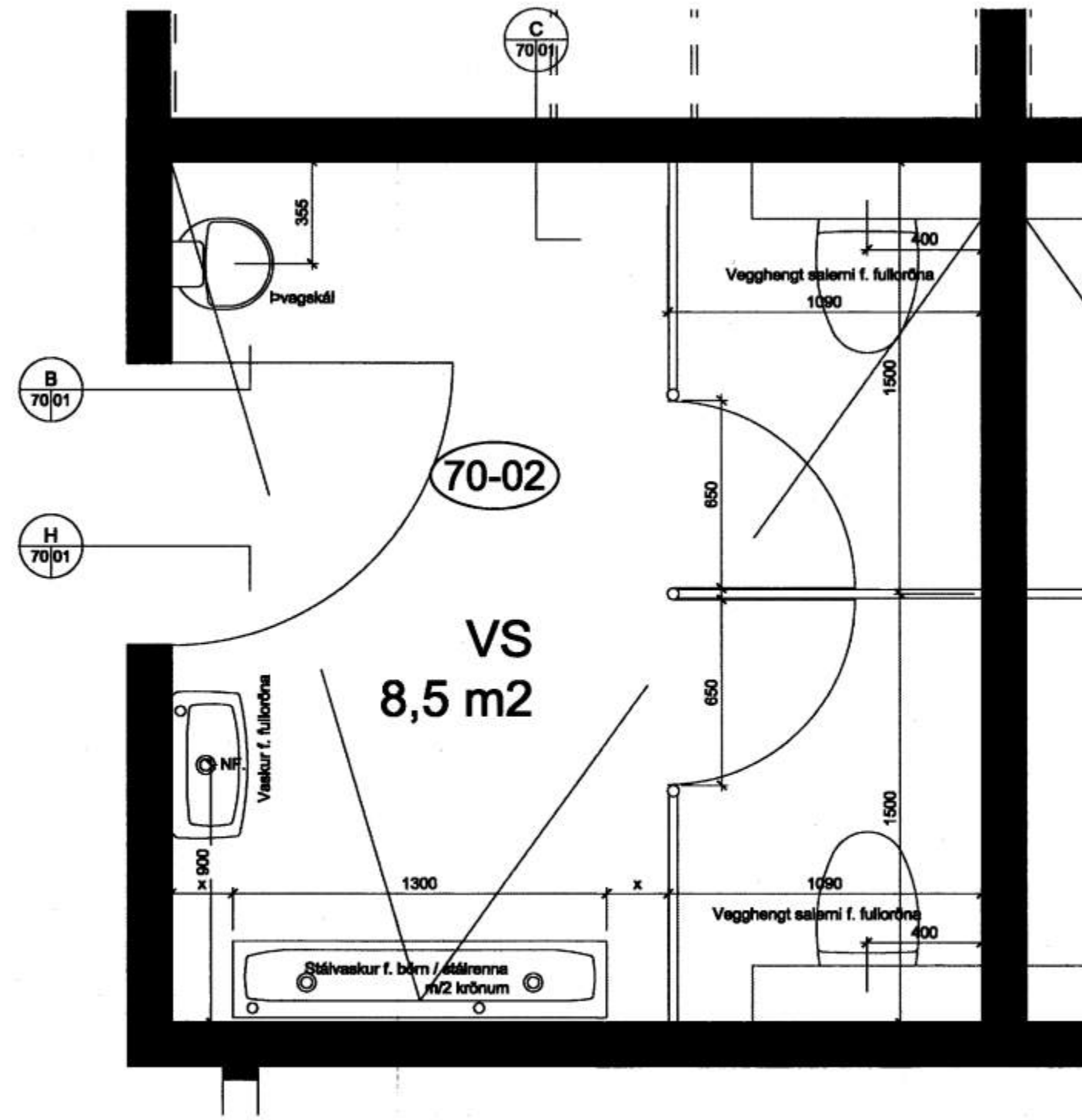
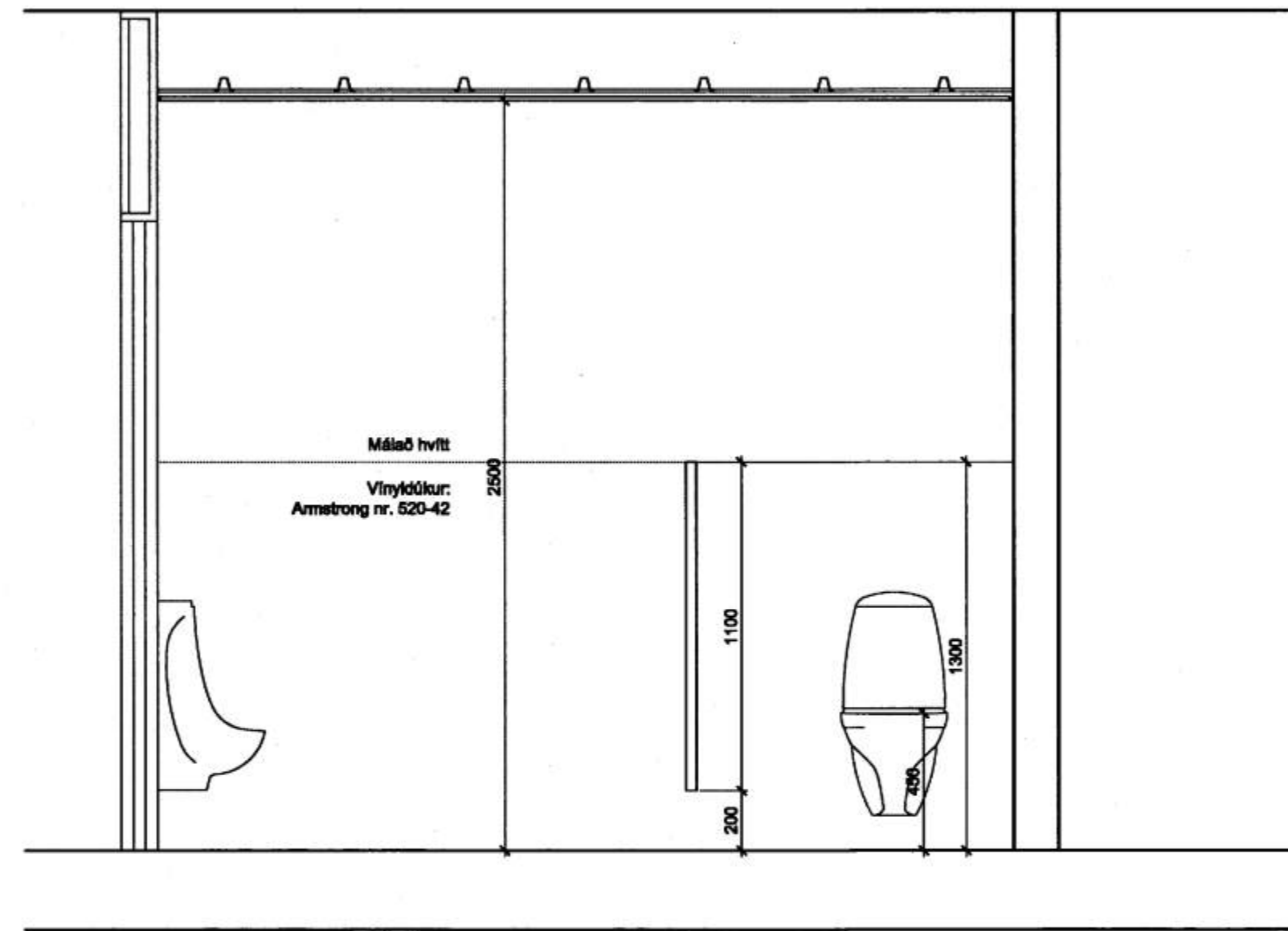


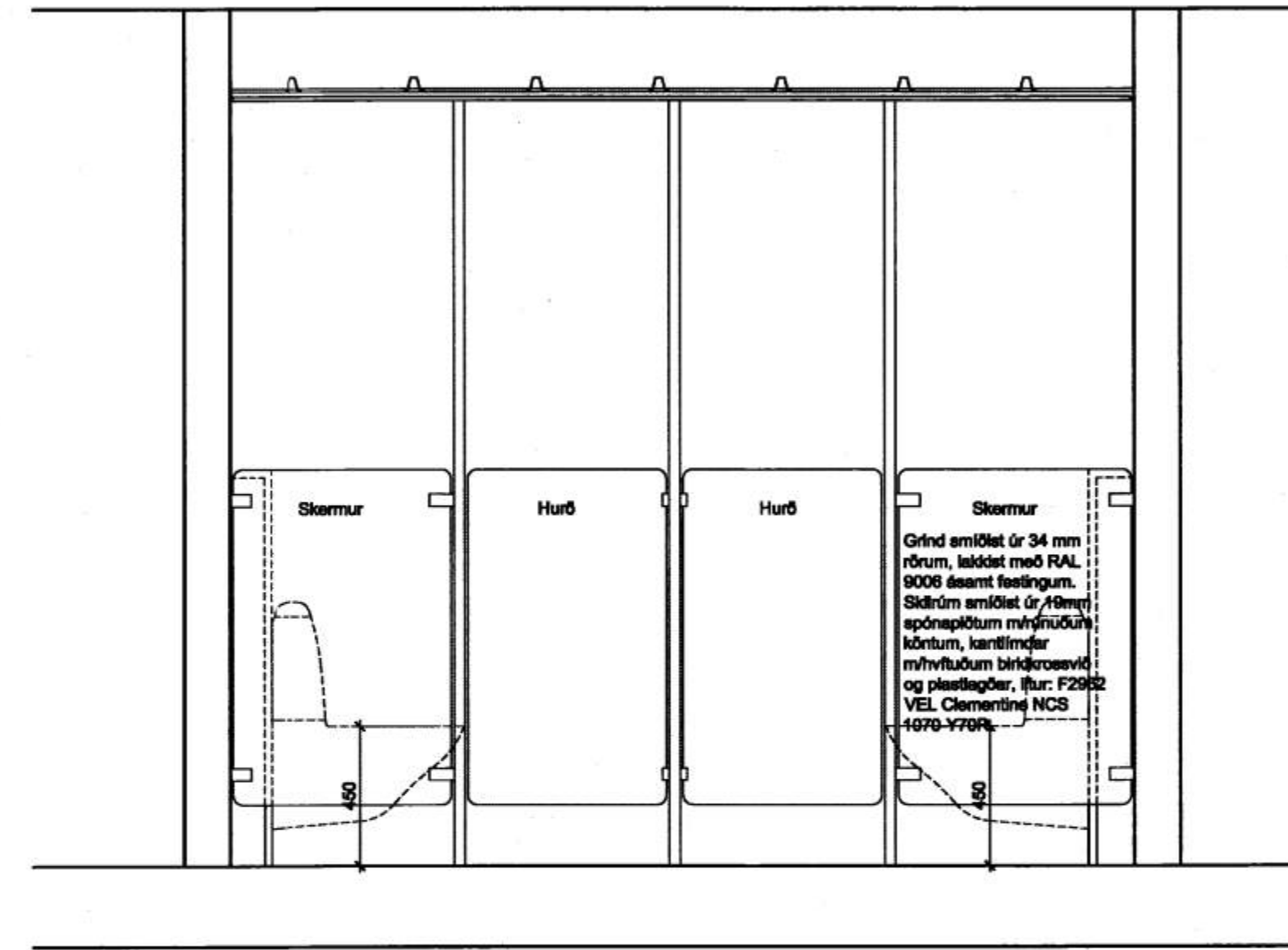
12.11.2007
 Sigurður S. Sigmundsson
 BYGGINGARFULLTRÚINN Í VESTMANNNAEYJUM



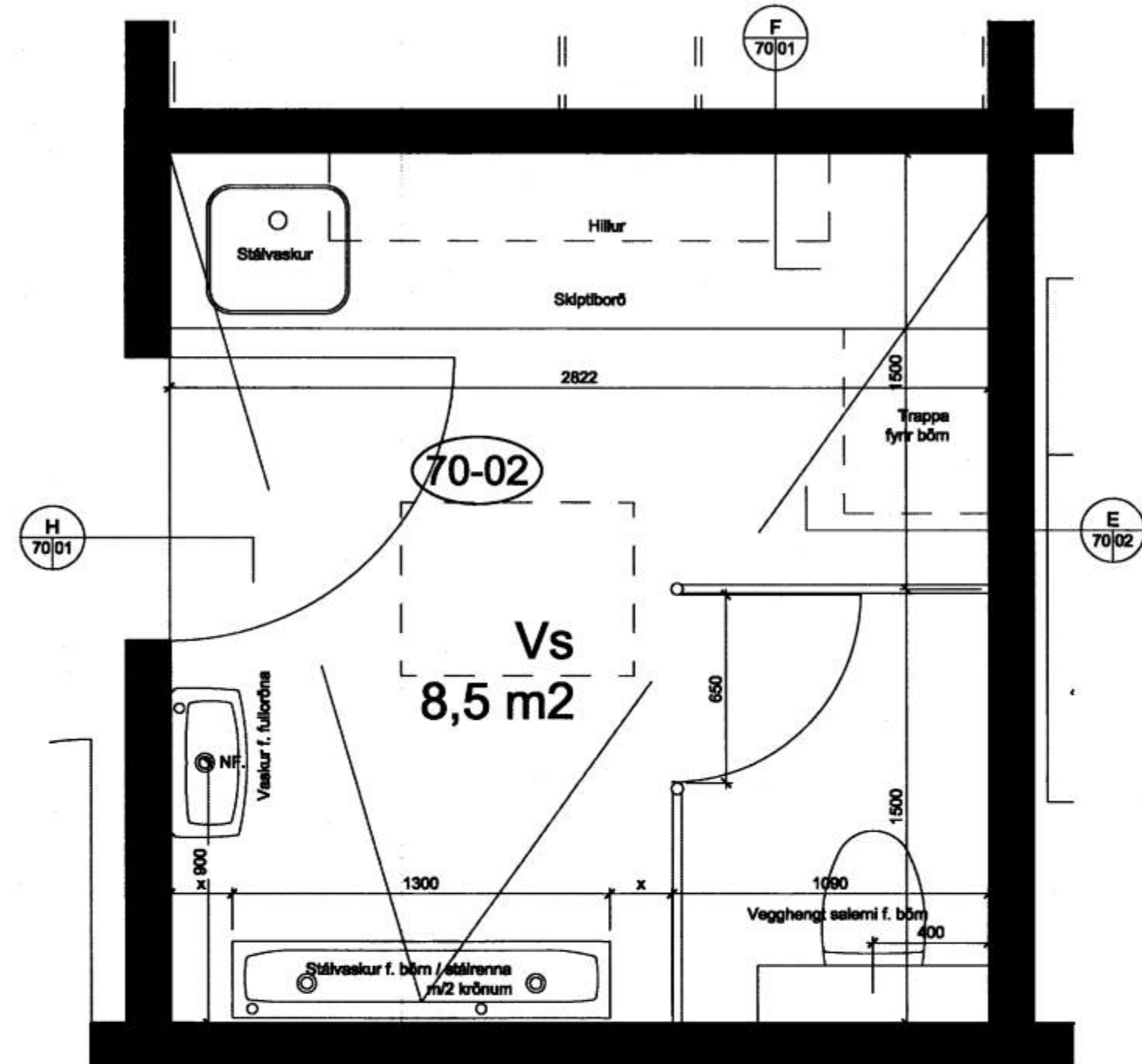
A 70/02 Grunnmynd, salemi Vesturheimar 1:20



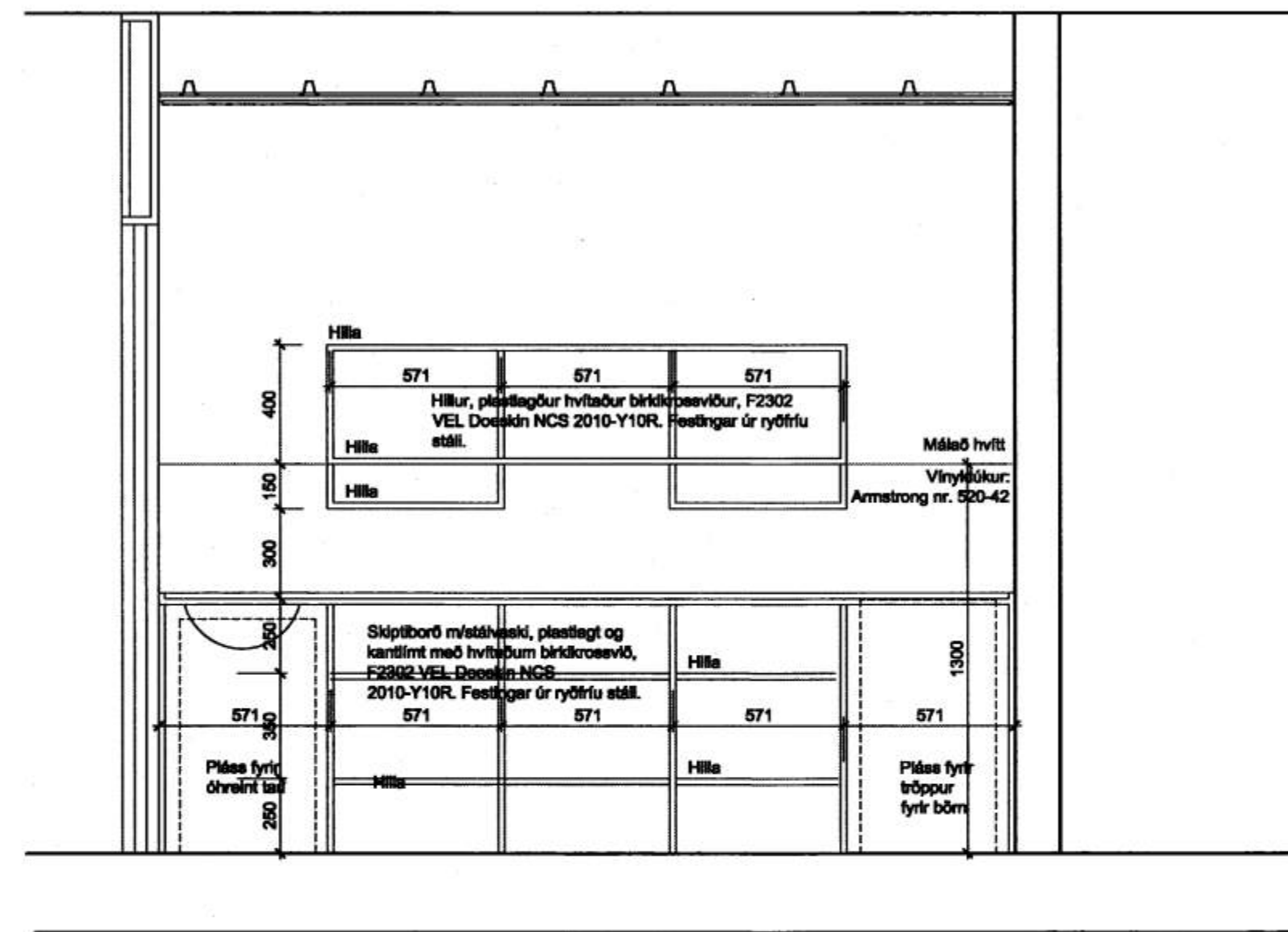
B 70/02 Sneiðing A - A, salemi 1:20



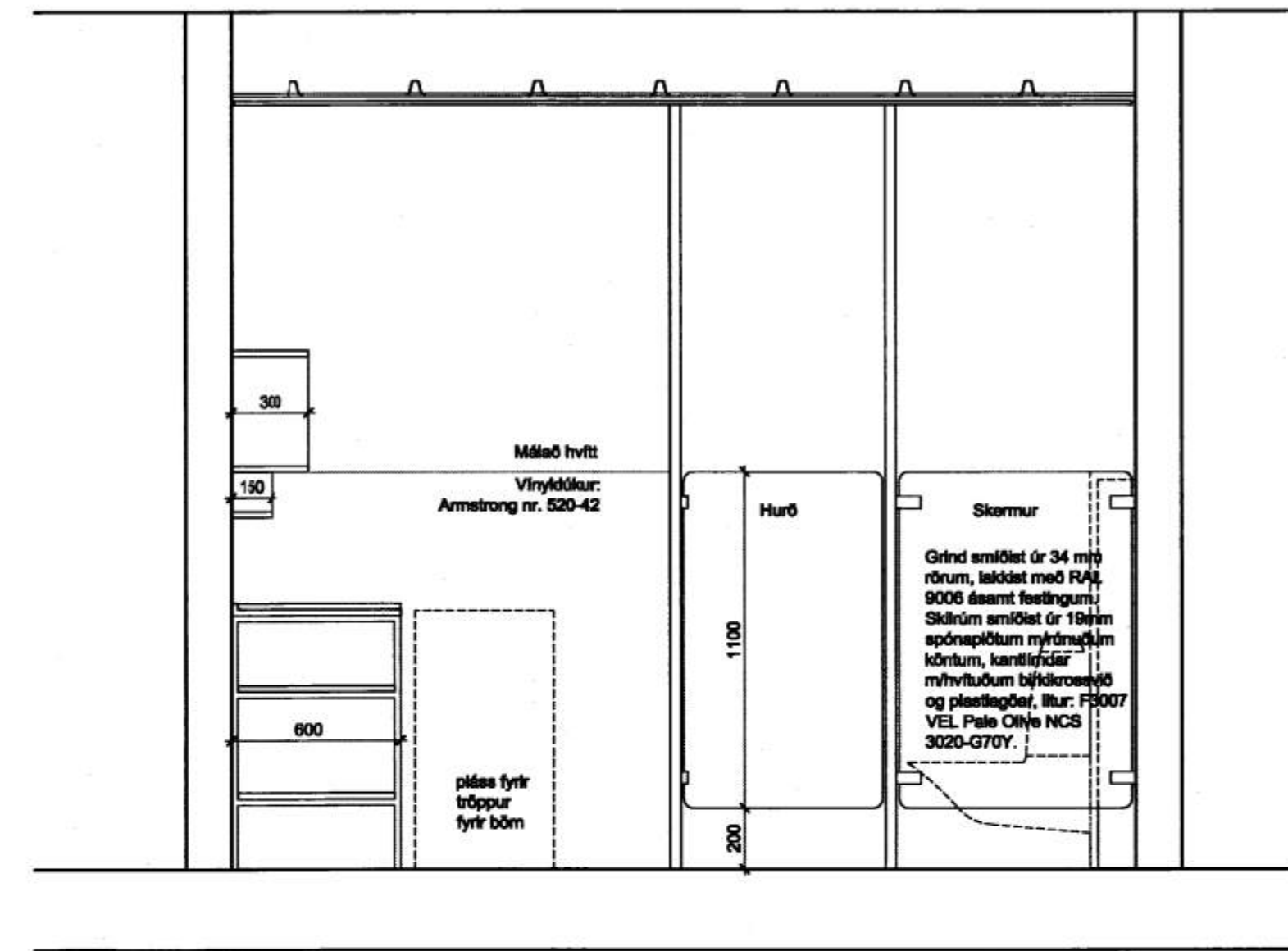
C 70/02 Sneiðing B - B, salemi 1:20



D 70/02 Grunnmynd, salemi Austurheimar 1:20



E 70/02 Sneiðing B - B, salemi 1:20



F 70/02 Sneiðing B - B, salemi 1:20

Athugið:
 Öll mál og aðstæður athugist á staðnum fyrir smíði.
 B2: 14.8.2006 - farsla á stöðvökum í skriptborðum
 B1: Nánnari skýrleging á efnisval.
 bryttingur

LEIKSKÓLINN SÓLI, VESTMANNNAEYJUM
 INNRETTINGAR: VESTUR- OG AUSTURHEIMAR
 Salemi
 28.10.2005 1:20 B2 70-02
 dag. mál brytting sk.
 KT: 4670-200
 TEIKNETIÐFA HALLDÓRS BURKHUNDSSONAR FAI
 BÓGLAYUN 6 - 105 REYKJAVÍK - Sími: 545 1800
 FAX: 545 1816 TH@TH.IS WWW.TH.IS