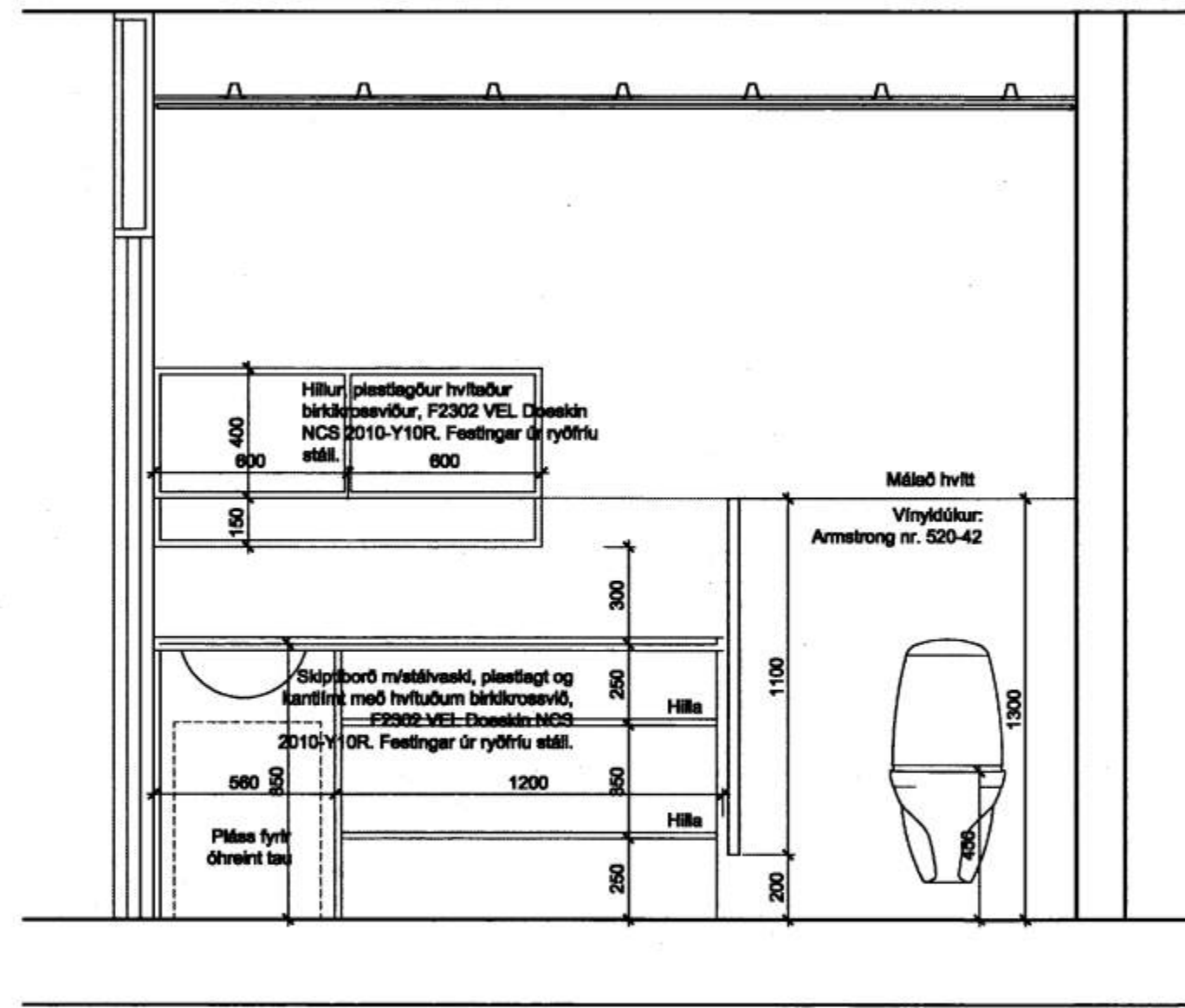
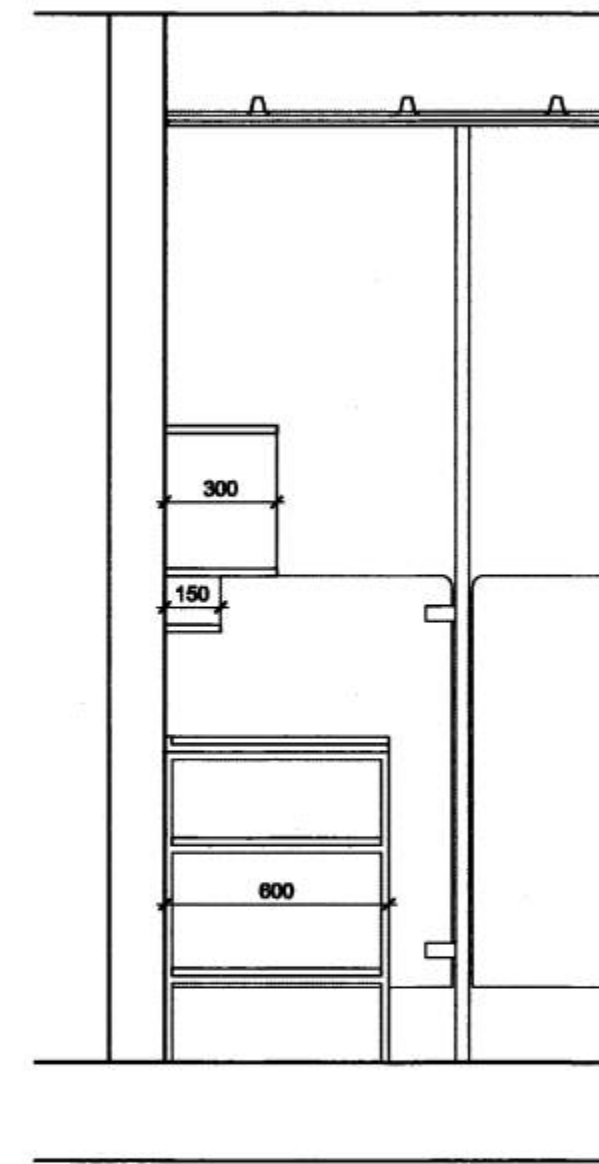


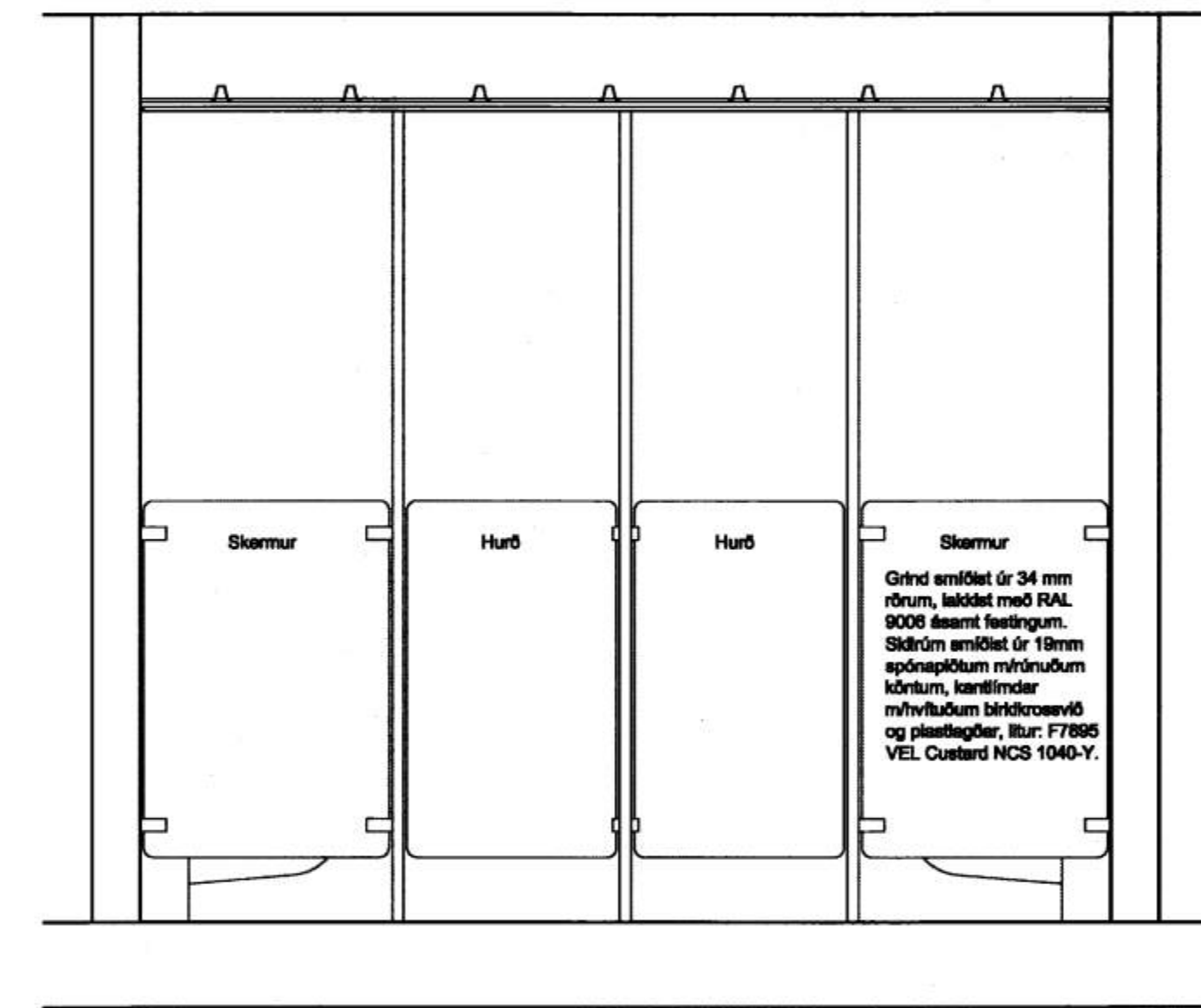
A 70/01 Grunnmynd, salemi Miðheimar 1:20



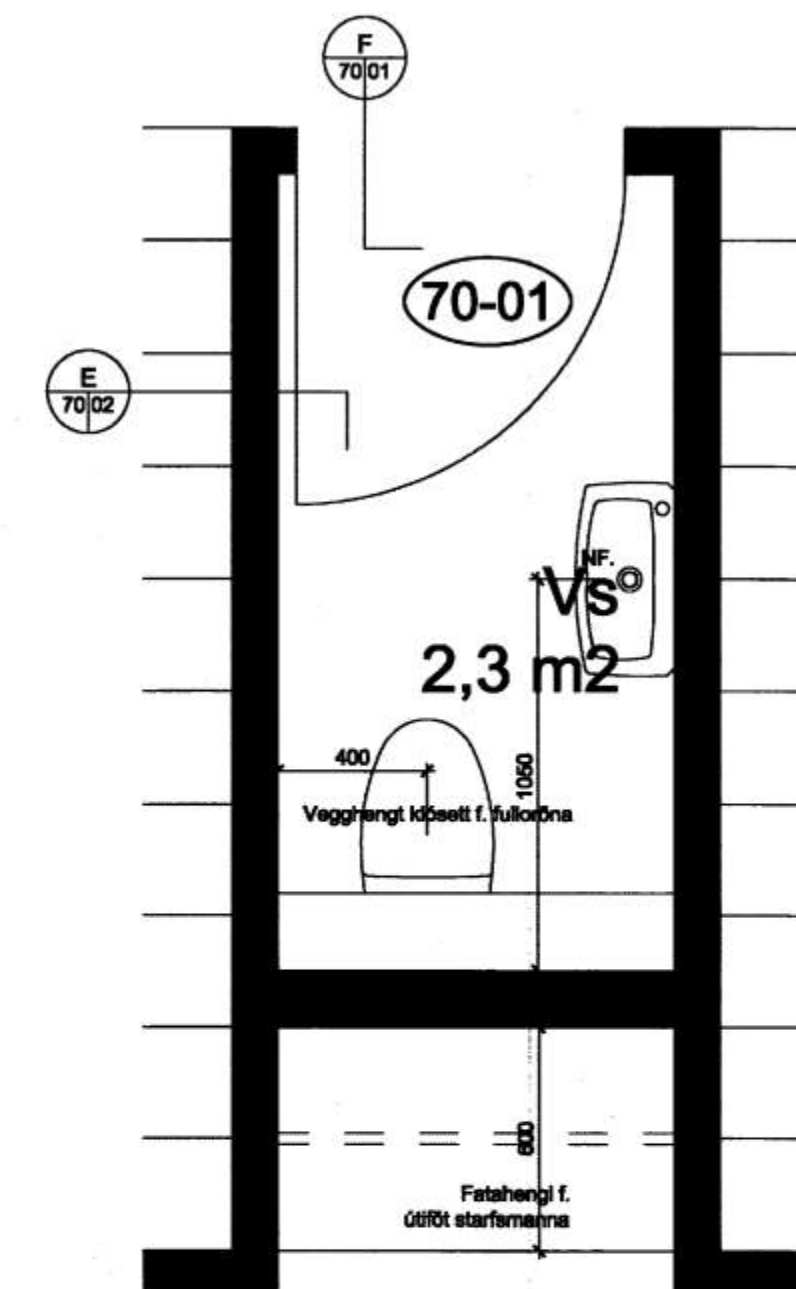
B 70/01 Sneiðing A - A, salemi 1:20



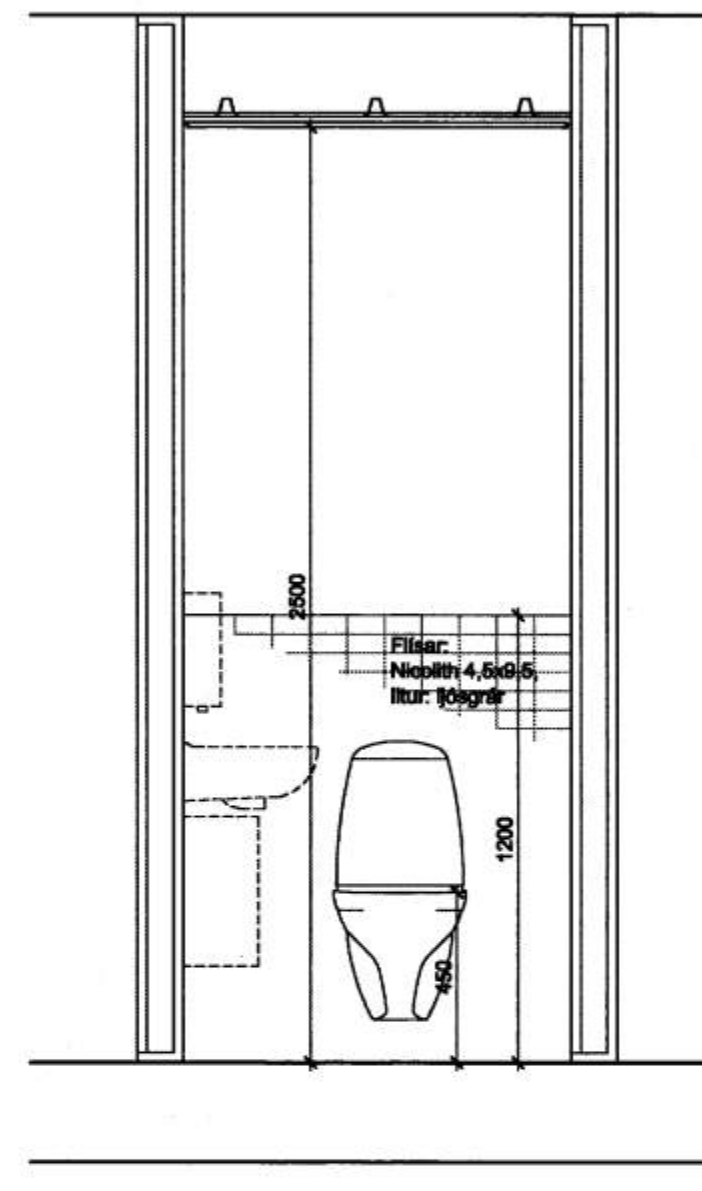
C 70/01 Sneiðing B - B, salemi 1:20



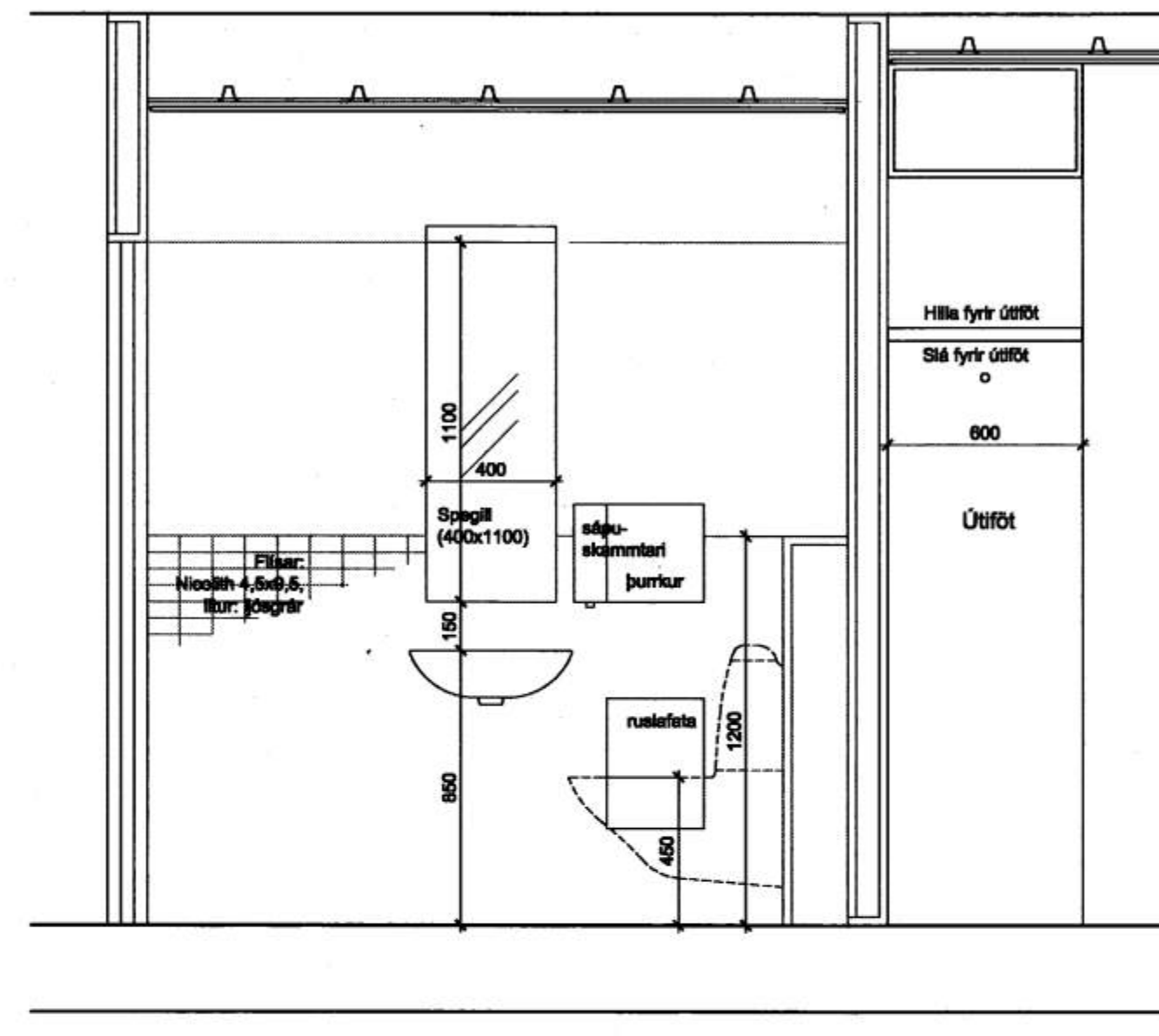
I 70/01 Sneiðing B - B, salemi 1:20



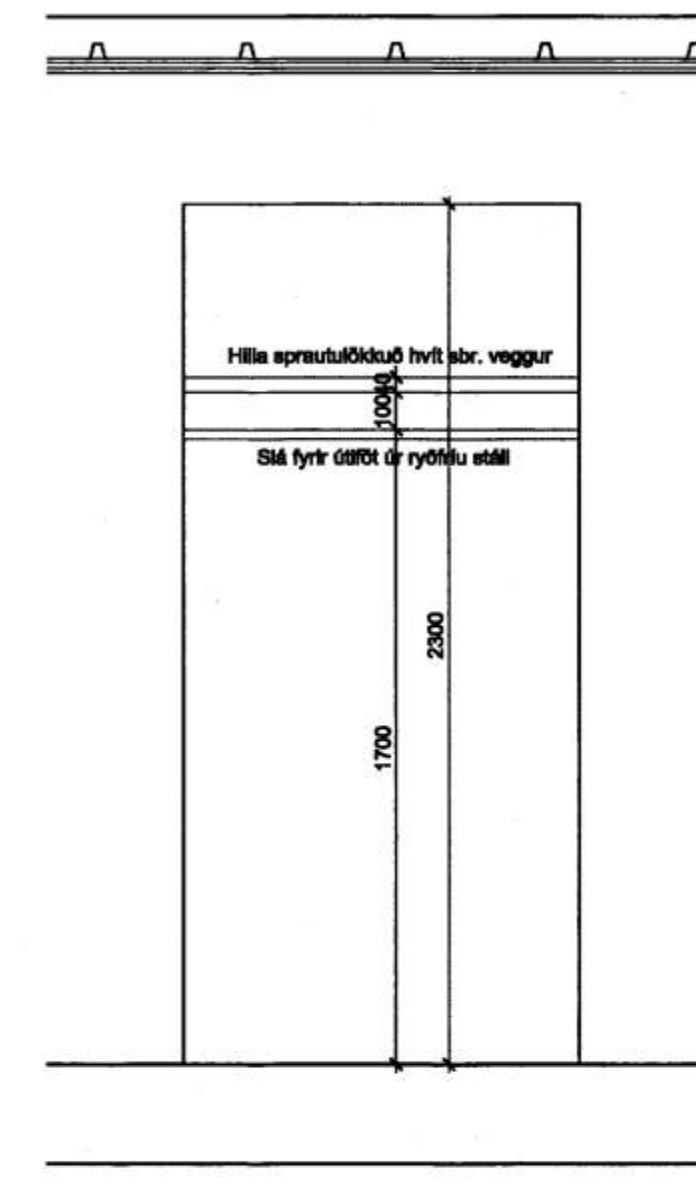
D 70/01 Grunnmynd, salemi 1:20



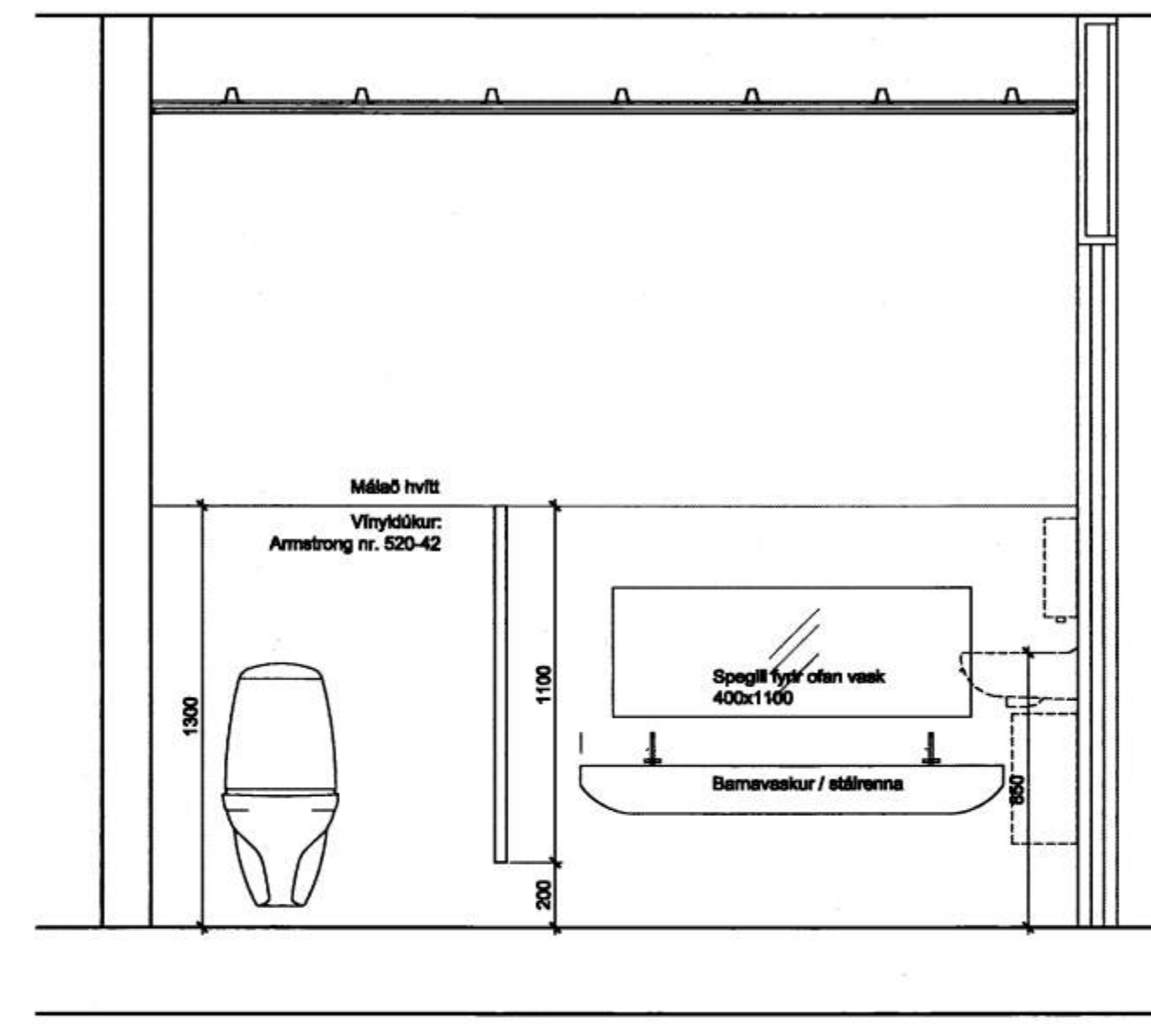
E 70/01 Sneiðing A - A, salemi 1:20



F 70/01 Sneiðing B - B, salemi 1:20



G 70/01 Sneiðing B - B, salemi 1:20



H 70/01 Sneiðing B - B, salemi 1:20

Athugið:
 Öll mál og aðstæður athugist á staðnum fyrir smíði.

B2: 14.8.2006 - færsla á stöðvolum í skýpörðum
 B1: Nærast skýgræning á stöðvól.
 breytingar

LEIKSKÓLINN SÓLI, VESTMANNAEYJUM

INNRETTINGAR-MIDHEIMAR
 Salemi

28.10.2006 1:20
 drsg. mál 03 byling 70-01

[Signature]

TK: 44703286
 TEIKNISTOFA HALLDÓRS BUEHLINDBERGHAR PÁ
 BRÚLATÓN 6 - 105 REYKJAVÍK - sími: 545 1600
 FAX: 545 1616 TH@TH.IS WWW.TH.IS

