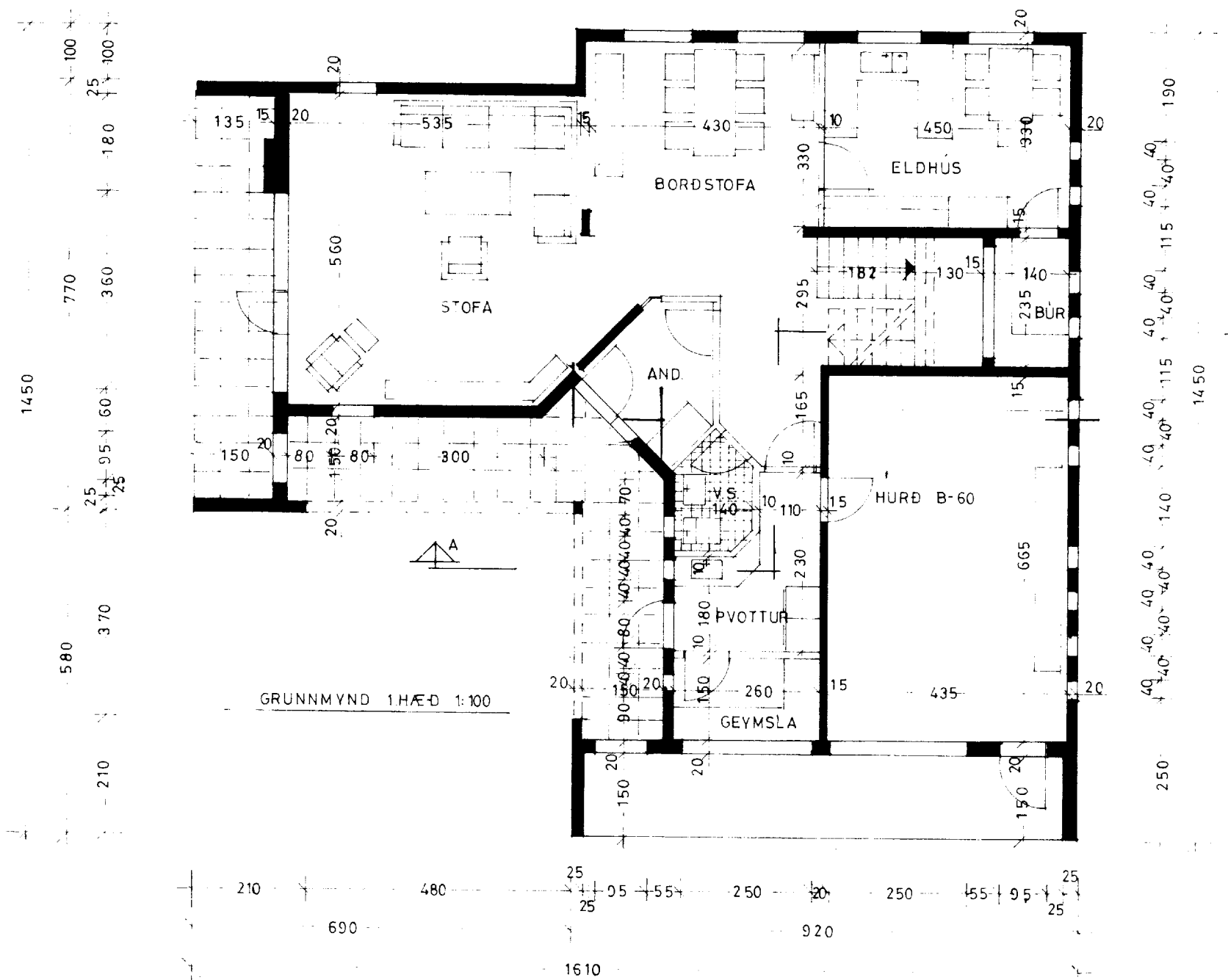
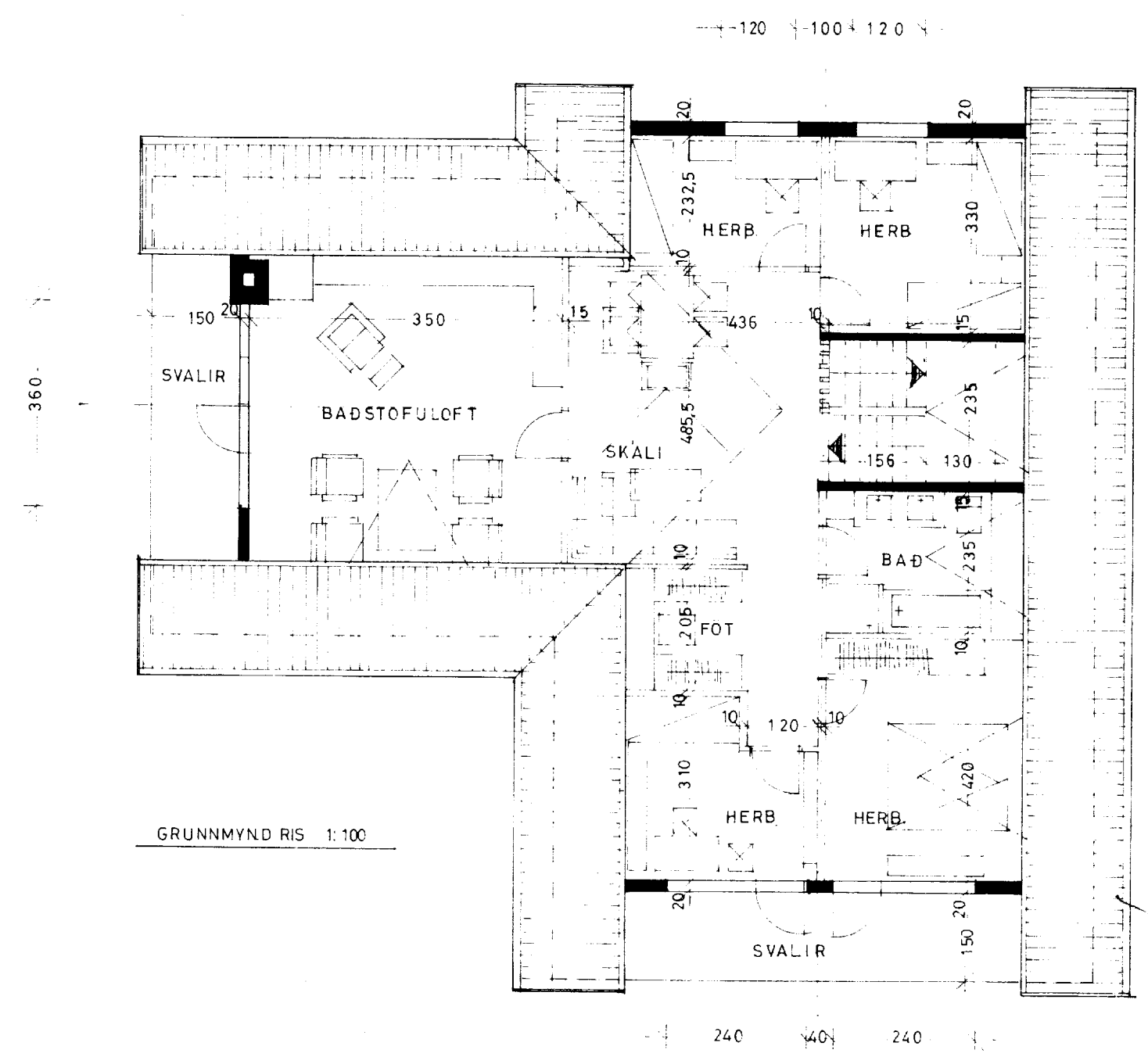
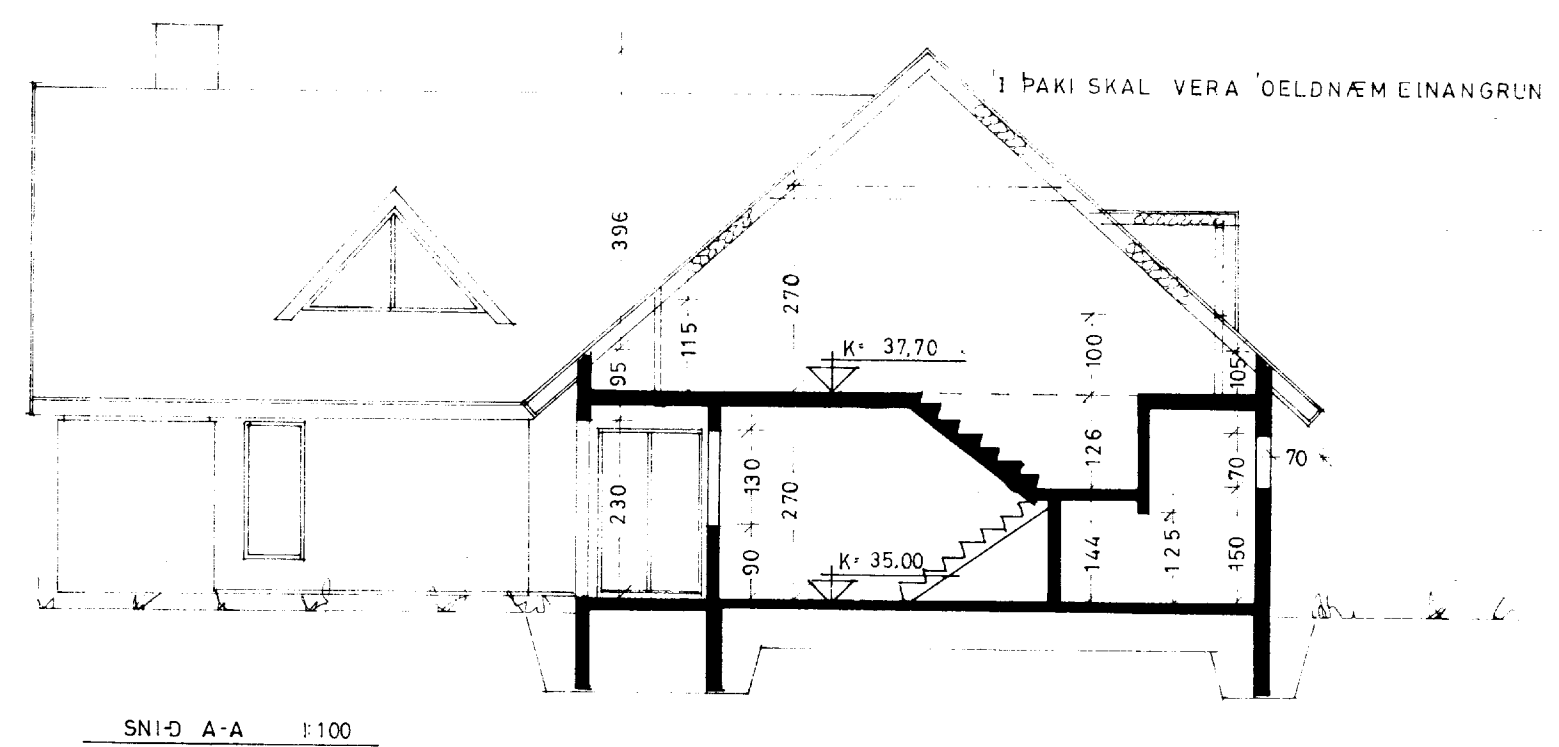


14. 5. 82
 Jón Guðmundsson



SKÝRINGAR

GRUNNFLOTUR HUSS BRUTTO	142,0 m ²
BÍFR GEYMSLA NETTO	27,8 m ²
BÚÐ HÆÐ NETTO	89,4 m ²
BÚÐ RIS NETTO	97,9 m ²



31a/31b

NR 33

(35a/35b)

32a

AFSTÖÐUMYND 1:500

KVARDI Teiknistofa Bolholti 6, 3.h. Reykjavík Sími (91) 82414

VERKEFNI	ASAVEGUR 33, REYKJAVÍK	KVARDI	1:100 1:500	VERK NR.	8214
		DAGS.	APRIL '82	TYPA NR.	R-17
HEITI	GRUNNMYNDIR AFSTÖÐUMYND SKÝRINGAR SNÍÐ	HÖNNUN	H.P.	TEIKN. NR.	A-2
		TEIKN. RI	REIKN. RI		

Jón Guðmundsson